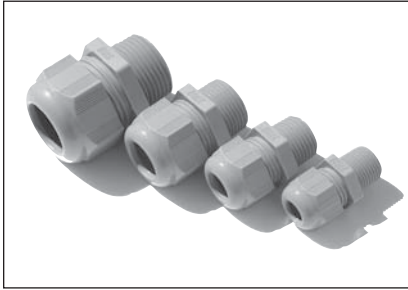


T&B Conduit Fittings

Portable Cord and Cable Fittings

Nonmetallic Cable Glands—Low Profile for Tight Spots



Sturdy Nylon 6 for strong, lightweight construction.
Gray colour shown, also available in black.

T&B Nylon Cable Glands have a sturdy cable sealing mechanism which results in superior strain relief. The compact size ensures quick and easy installation in cramped spaces. The nonmetallic construction provides excellent corrosion, chemical and impact resistance. The glands have long threads and locknuts are available.

- Halogen free
- Flame retardant material rated UL 94-V0
- Rated IP 68 5 BAR, suitable for NEMA 4 enclosures
- UL Listed, CSA listed for certain ranges of cable
- Working Temperatures: -30°C (-86°F) to +80°C (176°F) Continuous, 150°C (276°F) Intermittent
- Meets VDE ratings

Nonmetallic Cable Glands



Cat no.	Hub Size	Colour	Cable Range		Length of Thread		USE T&B Locknut cat. no.	Unit pkg.	Std. pkg.	UPC code
			in.	mm	in.	mm				
NPT Threads										
CC-NPT38-B	3/8"	BLACK	.197 - .394	5-10	0.590	15	CI-1703PL*	50	250	786210-95582
CC-NPT38-G	3/8"	GREY	.197 - .394	5-10	0.590	15	CI-1703PL*	50	250	786210-07817
CC-NPT12-B	1/2"	BLACK	.394 - .551	10-14	0.590	15	LN501	50	250	786210-95583
CC-NPT12-G	1/2"	GREY	.394 - .551	10-14	0.590	15	LN501	50	250	786210-07824
CC-NPT34-B	3/4"	BLACK	.512 - .709	13-18	0.590	15	LN502	25	100	786210-95584
CC-NPT34-G	3/4"	GREY	.512 - .709	13-18	0.590	15	LN502	25	100	786210-07853
CC-NPT1-B	1"	BLACK	.709 - .984	18-25	0.709	18	LN503	20	100	786210-95586
CC-NPT1-G	1"	GREY	.709 - .984	18-25	0.709	18	LN503	20	100	786210-14682
ISO/Metric Threads										
CC-ISO-16-G	M16	GREY	.197 - .394	5-10	0.394	10	LN-ISO16-G	50	250	786210-21170
CC-ISO-20-G	M20	GREY	.236 - .473	6-12	0.590	15	LN-ISO20-G	50	250	786210-21173
CC-ISO-25-B	M25	GREY	.512 - .709	13-18	0.590	15	LN-ISO25-G	25	250	786210-21174
CC-ISO-32-G	M32	GREY	.709 - .984	18-25	0.590	15	LN-ISO32-G	20	250	786210-21175
CC-ISO-40-G	M40	GREY	.748 - 1.10	22-32	0.709	18				
PG Threads										
CC-PG7-G	7	GREY	.118 - .256	3-6.5	0.315	8	LN-PG7-G	50	200	786210-21160
CC-PG9-G	9	GREY	.157 - .315	4-8	0.315	8	LN-PG9-G	50	200	786210-21162
CC-PG11-G	11	GREY	.197 - .394	5-10	0.315	8	LN-PG11-G	25	100	786210-21163
CC-PG135-G	13-1/2	GREY	.236 - .473	6-12	0.354	9	LN-PG135-G	25	100	786210-21164
CC-PG16-G	16	GREY	.394 - .551	10-14	0.394	10	LN-PG16-G	25	100	786210-21165
CC-PG21-G	21	GREY	.512 - .709	13-18	0.433	11	LN-PG21-G	10	50	786210-21166
CC-PG29-G	29	GREY	.709 - .984	18-25	0.433	11	LN-PG29-G	10	50	786210-21167
CC-PG36-G	36	GREY	.867 - 1.26	22-32	0.512	13	LN-PG36-G	10	50	786210-21168

* Not CSA Certified.