

Copper splices

Tin-plated straight splices



SC 1000

Made from electrolytic seamless copper tubing, these splices can handle your heavy-duty applications

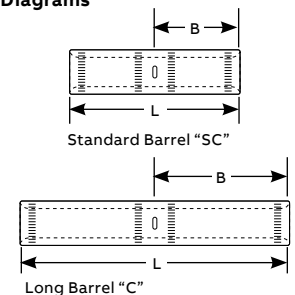
- Equalizes cable insertion
- Resists corrosion
- Easy identification

Tin-plated straight splices



| Standard barrel Cat. no. | Long barrel Cat. no. | Wire size (AWG or kcmil) | Standard barrel | | Long barrel | | Installing dies |
|-----------------------------|-------------------------|-----------------------------|-----------------|---------|-------------|---------|---------------------------|
| | | | B (in.) | L (in.) | B (in.) | L (in.) | |
| SC 8 | C 8 | #8 | 7/16 | 1 1/16 | 1 1/16 | 2 1/4 | TC, 21, 236 |
| SC 6 | C 6 | #6 | 13/16 | 1 3/4 | 1 1/8 | 2 3/8 | TE, 24 |
| SC 4 | C 4 | #4 | 13/16 | 1 3/4 | 1 1/8 | 2 3/8 | 5/16, 8, 29, 161, TP |
| SC 2 | C 2-HM | #2 | 7/8 | 1 7/8 | 1 1/4 | 2 3/8 | 3/8, 10, TL-TN, 33, 162 |
| SC 1-HM | C 1-HM | #1 | 7/8 | 1 7/8 | 1 3/8 | 2 7/8 | 11, TB, 37 |
| SC 1/0 | C 1/0 | 1/0 | 7/8 | 1 7/8 | 1 3/8 | 2 7/8 | 1/2, 12, TQ, 42, 163 |
| SC 2/0-HM | C 2/0 | 2/0 | 1 5/16 | 2 | 1 1/2 | 3 1/8 | 9/16, 13, TS, 45, 164 |
| SC 3/0 | C 3/0 | 3/0 | 1 | 2 1/8 | 1 1/2 | 3 1/8 | 5/8, 14, TU, 50, 243, BG |
| SC 4/0 | C 4/0 | 4/0 | 1 | 2 1/8 | 1 5/8 | 3 3/8 | 5/8-1, 15, TW-TY, 54 |
| SC 250-HM | C 250-HM | 250 | 1 1/16 | 2 1/4 | 1 5/8 | 3 3/8 | 1 1/16, 16, TR, 60, 166 |
| SC 300 | C 300-HM | 300 | 1 1/16 | 2 1/4 | 2 | 4 1/8 | 17, 66, TV, 781 |
| SC 350 | C 350 | 350 | 1 1/8 | 2 3/8 | 2 | 4 1/8 | 840, 18, TX, 71, 168, 208 |
| SC 400 | C 400 | 400 | 1 3/16 | 2 1/2 | 2 1/8 | 4 3/8 | 1 5/16, 19, TX, 76, 840 |
| SC 500 | C 500-HM | 500 | 1 3/8 | 2 7/8 | 2 1/4 | 4 5/8 | 1, 20, TH, 87, 251 |
| SC 600 | C 600-HM | 600 | 1 3/8 | 2 7/8 | 2 11/16 | 5 1/2 | 1 (5/8-1), 22, 96 |
| SC 750 | C 750 | 750 | 1 5/8 | 3 3/8 | 2 7/8 | 5 7/8 | 1 1/8, 2, 24, 106 |
| SC 1000-HM | C 1000 | 1,000 | 1 7/8 | 3 7/8 | 3 | 6 1/8 | 1 1/2, 27, 125, 642 |
| SC 1500* | C 1500* | 1,500 | 2 | 4 1/8 | 3 3/16 | 6 1/2 | 1 3/4, 31, 150 |
| SC 2000* | C 2000* | 2,000 | 2 1/4 | 4 5/8 | 3 7/16 | 7 | 2.00, 34, 175 |

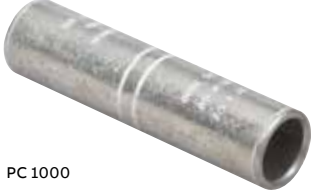
Diagrams



* SC 1500, SC 2000, C 1500 and C 2000 are not UL listed or CSA certified.

Copper splices

Tin-plated straight oil-stop splices



PC 1000

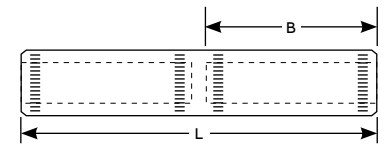
Electrolytic seamless copper tubing provides high conductivity and minimizes voltage drop

- Resists oil
- Resists corrosion

Tin-plated straight oil-stop splices

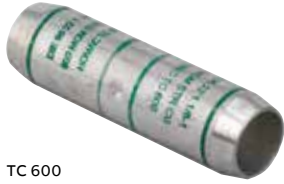
| Cat. no. | Wire size (AWG or kcmil) | Installing dies | Dimensions (in.) | |
|-----------|-----------------------------|------------------------------------|-------------------|-----------------|
| | | | B | L |
| PC 6 | #6 | 7, TE, 24 | 1 $\frac{1}{8}$ | 2 $\frac{3}{8}$ |
| PC 4-HM | #4 | $\frac{5}{16}$, 8, TP, 29, 161 | 1 $\frac{1}{8}$ | 2 $\frac{3}{8}$ |
| PC 2-HM | #2 | $\frac{3}{8}$, 10, TL-TN, 162 | 1 $\frac{1}{4}$ | 2 $\frac{5}{8}$ |
| PC 1-HM | #1 | $\frac{1}{2}$, 11, TB, 37, 276 | 1 $\frac{3}{8}$ | 2 $\frac{7}{8}$ |
| PC 1/0 | 1/0 | $\frac{1}{2}$, 12, TQ, 42, 163 | 1 $\frac{3}{8}$ | 2 $\frac{7}{8}$ |
| PC 2/0 | 2/0 | $\frac{5}{16}$, 13, TS, 164, 45 | 1 $\frac{1}{2}$ | 3 $\frac{1}{8}$ |
| PC 3/0 | 3/0 | $\frac{5}{8}$, 14, TU, 243, BG 50 | 1 $\frac{1}{2}$ | 3 $\frac{1}{8}$ |
| PC 4/0 | 4/0 | 54, $\frac{5}{8}$ -1, 15, TW-TY | 1 $\frac{5}{8}$ | 3 $\frac{3}{8}$ |
| PC 250-HM | 250 | $1\frac{11}{16}$, 16, TR, 166, 60 | 1 $\frac{5}{8}$ | 3 $\frac{3}{8}$ |
| PC 300 | 300 | 781, 17, 66, TV | 2 | 4 $\frac{1}{8}$ |
| PC 350 | 350 | 71, 840, 18, TX, 168, 208 | 2 | 4 $\frac{1}{8}$ |
| PC 400 | 400 | 76, $1\frac{5}{16}$, 19, TX, 840 | 2 $\frac{1}{8}$ | 4 $\frac{3}{8}$ |
| PC 500 | 500 | 251, 1, 20, TH 87 | 2 $\frac{1}{4}$ | 4 $\frac{5}{8}$ |
| PC 600-HM | 600 | 1 ($\frac{1}{8}$)-1, 22, 96 | 2 $\frac{11}{16}$ | 5 $\frac{1}{2}$ |
| PC 750 | 750 | 1 $\frac{1}{4}$, 24, 106 | 2 $\frac{7}{8}$ | 5 $\frac{7}{8}$ |
| PC 1000 | 1,000 | 1 $\frac{1}{2}$, 27, 125, 642 | 3 | 6 $\frac{1}{8}$ |

Diagram



Copper splices

Tin-plated tapered splices



TC 600

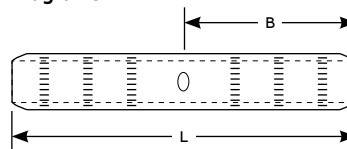
High-voltage, oil, harsh environments — these splices can handle it all

- Provides high conductivity, minimizes voltage drop
- Enable use in high-voltage installations up to 69 kV
- Resists corrosion and extends shelf life
- Equalizes cable insertions
- Resists oil

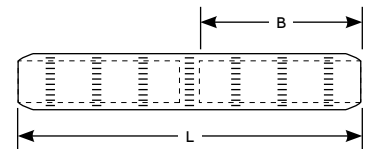
Tin-plated tapered splices

| Dimpled center stop Cat. no. | Solid center oil stop Cat. no. | Wire size (AWG or kcmil) | Installing dies | Dimensions (in.) | |
|---------------------------------|-----------------------------------|-----------------------------|--|---------------------------------|---------------------------------|
| | | | | B | L |
| TC 6 | PTC 6 | #6 | 7, TE, 24, 5/16 | 7/8 | 1 ²⁹ / ₃₂ |
| TC 4 | PTC 4 | #4 | 5/16, 8, TP, 29 | 7/8 | 1 ²⁹ / ₃₂ |
| TC 2 | PTC 2 | #2 | 3/8, 10, TL-TN, 33 | 31/32 | 2 ¹ / ₁₆ |
| TC 1 | PTC 1 | #1 | 3/8, 11, TB, 37 | 31/32 | 2 ¹ / ₁₆ |
| TC 1/0 | PTC 1/0 | 1/0 | 1/2, 12, TQ, 42 | 31/32 | 2 ¹ / ₁₆ |
| TC 2/0 | PTC 2/0 | 2/0 | 9/16, 13, TS, 45 | 1 ⁷ / ₃₂ | 2 ⁷ / ₃₂ |
| TC 3/0 | PTC 3/0 | 3/0 | 5/8, 14, TU, 50 | 1 ¹ / ₈ | 2 ¹³ / ₃₂ |
| TC 4/0 | PTC 4/0 | 4/0 | 5/8-1, 15, TW-TY, 9A | 1 ¹ / ₈ | 2 ³ / ₈ |
| TC 250 | PTC 250 | 250 | 1 ¹ / ₁₆ , 16, TR, 60 | 1 ⁷ / ₃₂ | 2 ⁹ / ₁₆ |
| TC 300 | PTC 300 | 300 | 781, 17, 66, TV | 1 ¹ / ₄ | 2 ⁵ / ₈ |
| TC 350-HM | PTC 350 | 350 | 840, 18, TX, 71 | 1 ⁹ / ₁₆ | 2 ²⁵ / ₃₂ |
| TC 400 | PTC 400 | 400 | 840, 1 ⁵ / ₁₆ , 19, TX, 76 | 1 ⁷ / ₁₆ | 2 ³¹ / ₃₂ |
| TC 500 | PTC 500 | 500 | 1, 20, TH, 87 | 1 ¹¹ / ₁₆ | 3 ¹⁷ / ₃₂ |
| TC 600 | PTC 600 | 600 | 1 (1/8)-1, 22, 96 | 2 ¹ / ₁₆ | 4 ⁷ / ₃₂ |
| TC 750 | PTC 750 | 750 | 1 ⁵ / ₁₆ , 24, 106 | 2 ¹ / ₁₆ | 4 ⁷ / ₃₂ |
| TC 800 | PTC 800 | 800 | 1 ⁵ / ₁₆ , 2, 25 | 2 ¹ / ₁₆ | 4 ⁷ / ₃₂ |
| TC 1000 | PTC 1000 | 1,000 | 1 ¹ / ₂ , 27, 125 | 2 ¹ / ₄ | 5 |
| TC 1500 | PTC 1500 | 1,500 | 1 ³ / ₄ , 31, 150 | 2 ³ / ₄ | 6 |
| TC 2000 | PTC 2000 | 2,000 | 2.00, 34, 175 | 3 ¹ / ₈ | 6 ³ / ₄ |

Diagrams



"TC" Dimple style



"PTC" Solid center oil stop