

Nexus®Pro Smart emergency lighting monitoring system



Simplify emergency lighting management with Nexus®Pro. The smart emergency lighting monitoring system provides 24/7 remote monitoring, real-time diagnostics, and automated reporting—all in one place. Compatible with a wide range of battery units, signs, combination units, and central battery systems, Nexus®Pro ensures reliable performance wherever safety matters most.

Stay connected. Stay ahead.



Features and benefits

Supports up to **200 devices** per Gateway

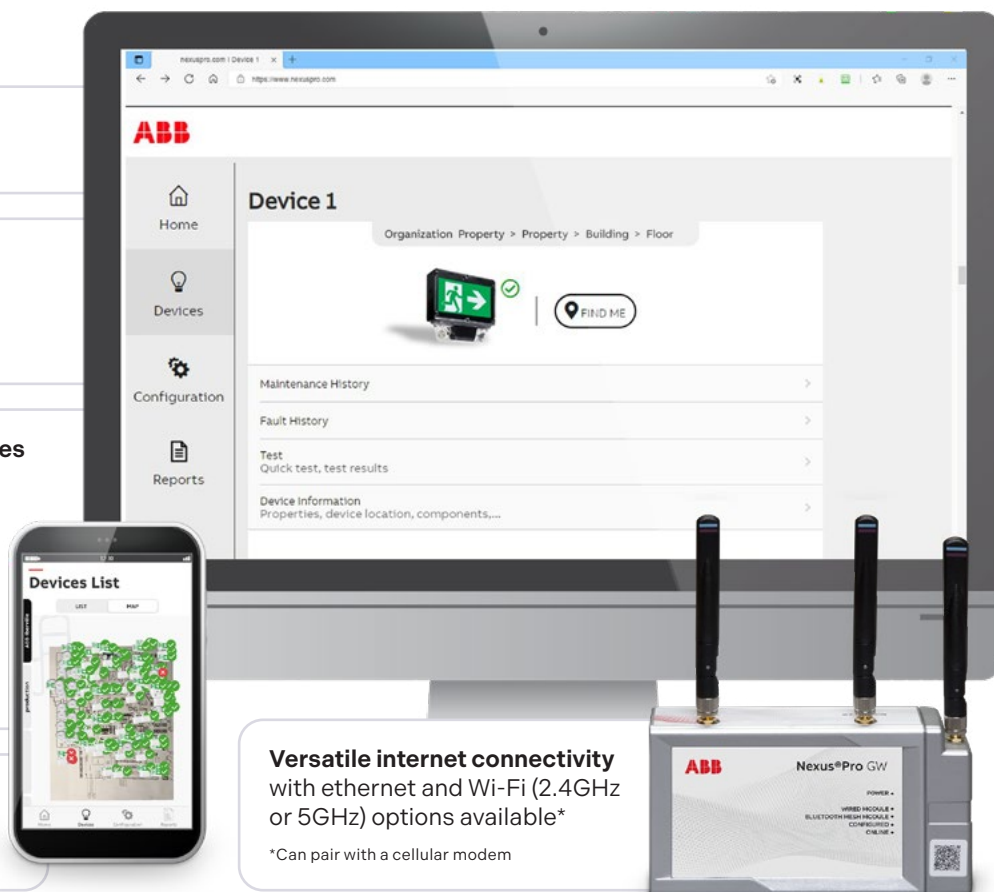
Industrial-grade security featuring Bluetooth Mesh device-level encryption and HTTPS secure communication

Extended communication ranges

- Up to 39.6 m (130 ft) from unit to unit
- A minimum of two units must be connected to each gateway within a maximum radius of 30.5 m (100 ft)*.

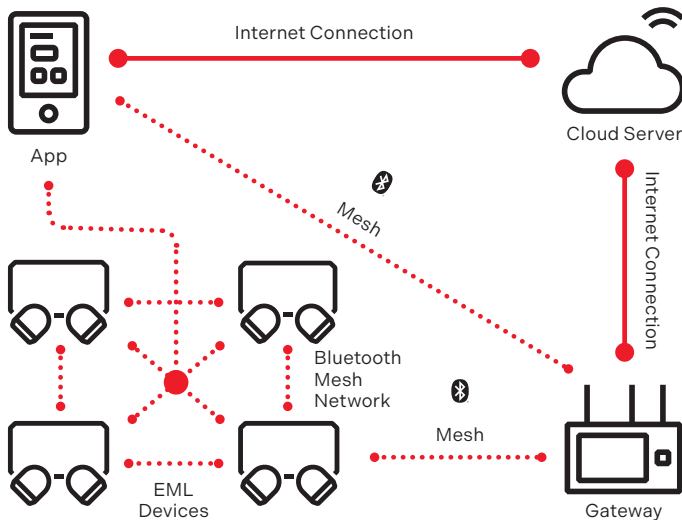
*Exact ranges depend on complexity and structural conditions of the installation site

Seamless integration with Android, iOS, and web-based applications



Versatile internet connectivity with ethernet and Wi-Fi (2.4GHz or 5GHz) options available*

*Can pair with a cellular modem



Why Nexus®Pro?

- **Free to use:** Nexus®Pro is entirely free to use after installation with no recurring costs or subscription fees.
- **Broad compatibility:** Integrates seamlessly with Emergi-Lite units, from mini-inverters to aesthetic commercial units to NEMA 4X industrial units.
- **Rapid commissioning:** Emergency lighting monitoring for 9,290 m² (100,000 sq ft) can be operational in half a day.
- **Peace of mind:** Nexus®Pro ensures compliance with safety standards like NFC, NBCC and CSA C282.

Nexus®Pro-compatible emergency lighting

Battery and remote units



Self-powered signs and combos



Mini inverters (300W - 1440W)

