

# BS2 SERIES

## Lot Line Meter Sockets 200 A – 600 V max.

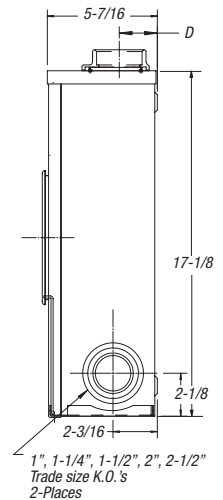
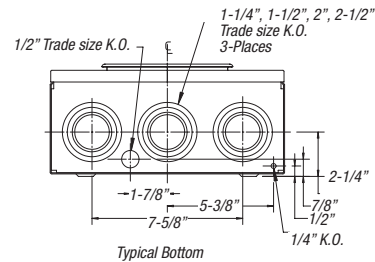
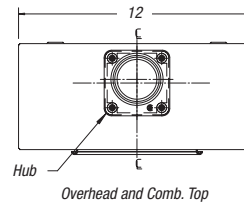
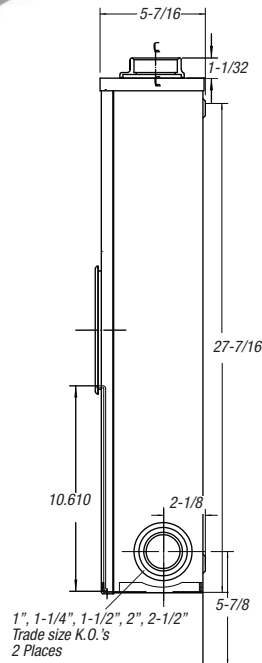
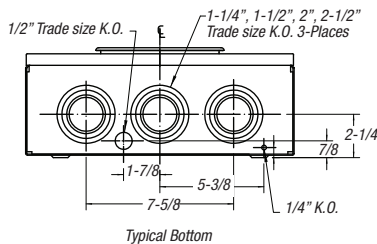
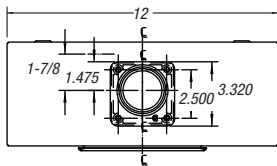
### Product Specifications

- Aluminum tunnel type connectors.
- Weatherproof type 3R enclosure.
- Supplied with screw type sealing ring.
- Required by Fortis Alberta Inc.
- Combination overhead – underground.

**Conductor range  
6 AWG – 350 kcmil**



**Conductor range  
6 AWG – 250 kcmil**

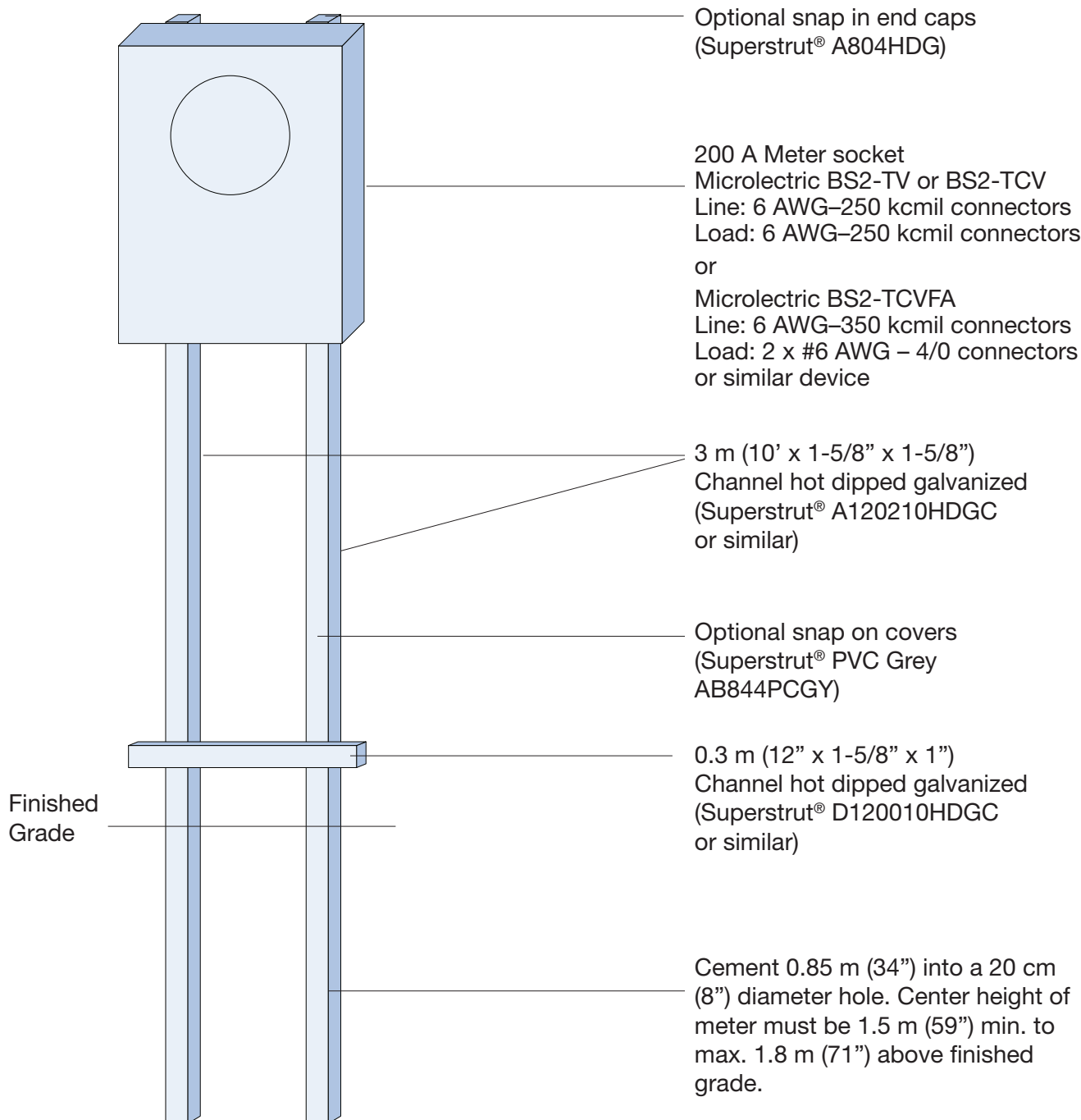


Cat. No.	Description	Dimensions (in.)			Weight Each	
		H	W	D	lb	kg
<b>BS2-TCVFA</b>	Combination, overhead-underground, Line: 6 AWG–350 kcmil connectors Load: 2 x #6 AWG – 4/0 connectors	27-7/16	12	5-7/16	35	16.0

Cat. No.	Description	Dimensions (in.)			Weight Each	
		H	W	D	lb	kg
<b>BS2-TCV</b>	Combination, overhead-underground, Line: 6 AWG–250 kcmil connectors Load: 6 AWG–250 kcmil connectors	17-1/8	12	5-7/16	14	6.3
<b>BS2-TV</b>	Underground Only	17-1/8	12	5-7/16	14	6.3

## Lot Line Metering (Source: Fortis Alberta Inc.)

- Fortis Alberta Inc. requires “Lot Line Metering” for all lots or acreages 0.33 acres (0.13 hectares) or larger, the meter must be installed on a pedestal 1.5 m inside from front property line. For small lots, the meter must be within 60 m from the front property line.
- Conductor requirements will dictate which 200 A socket is required.
- For further information, visit <http://www.fortisalberta.com> and see Customer Service & Metering Guide under Customer Service.



### Atlantic Provinces

Thomas & Betts Limited  
Tel.: (902) 450-1307  
Toll Free: 1-877-862-4357  
Fax: (902) 450-1309

### Quebec

Thomas & Betts Limited  
Tel.: (450) 466-1102  
Toll Free: 1-800-465-1399  
Fax: (450) 466-1163

### Ontario

Thomas & Betts Limited  
Tel.: (905) 858-1010  
Toll Free: 1-877-291-7771  
Fax: (905) 858-1080

### Manitoba/Saskatchewan

Thomas & Betts Limited  
Tel.: (604) 598-9811  
Toll Free: 1-866-540-8220  
Fax: (604) 598-9840

### Alberta

Thomas & Betts Limited  
Tel.: (780) 424-7092  
Toll Free: 1-888-664-5666  
Fax: (780) 424-7093  
Toll Free: 1-866-424-4082

### British Columbia

Thomas & Betts Limited  
Tel.: (604) 598-9811  
Toll Free: 1-866-540-8220  
Fax: (604) 598-9840