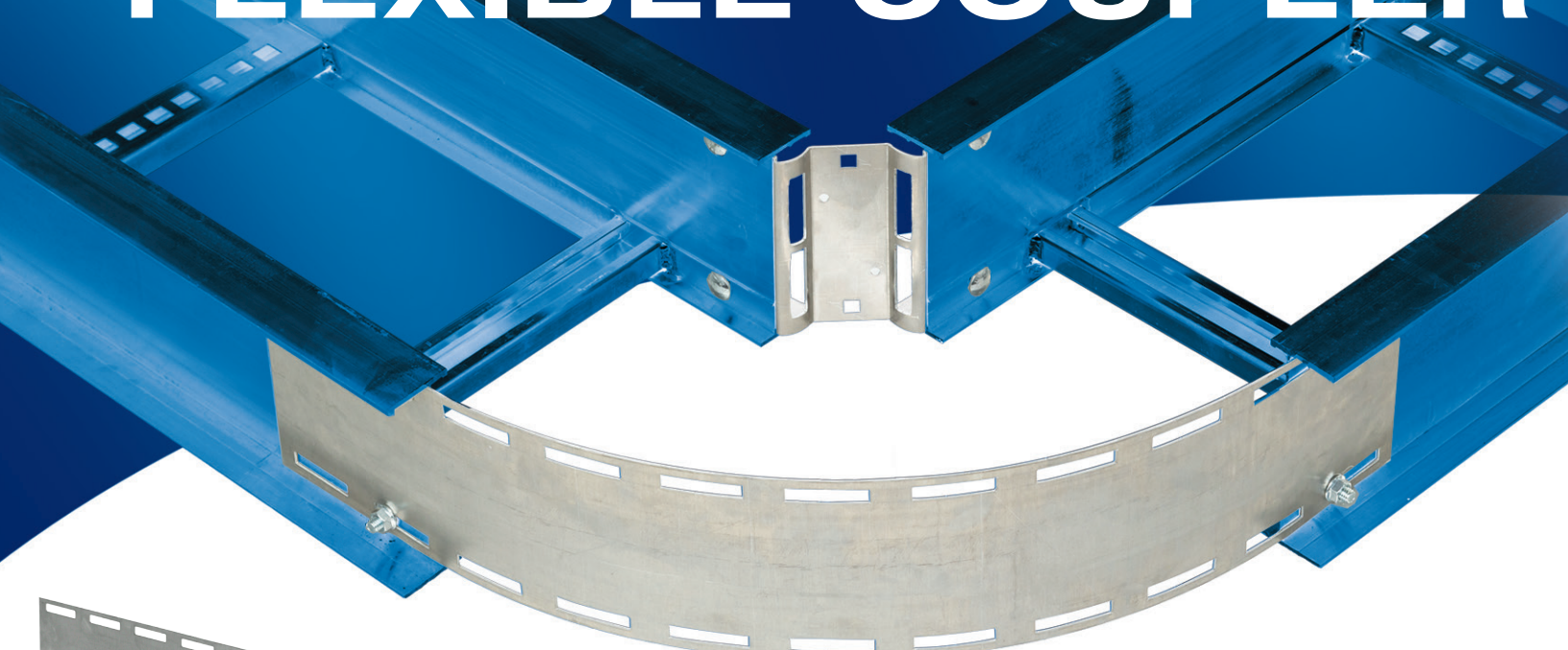


## Introducing our new **FLEXIBLE COUPLER**



The flexible coupler provides easy installation without measuring and cutting cable tray side rails. Once installed, the coupler allows for electrical continuity, therefore eliminating the requirement for a bonding jumper.

Exterior strap provides accurate radius to meet your cable tray design requirements.

- Formed ribs provide better cable protection
- Fast and easy installation
- Meets the electrical continuity requirement of NEMA VE1 & CSA C22.2 No. 126.1



Reduces installation time

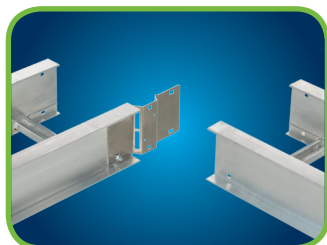
No need for a bonding jumper

Flexible and economical alternative to regular AU/AH fitting

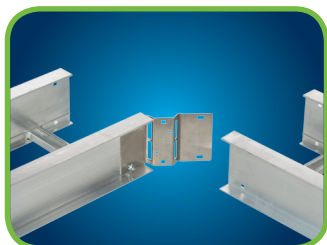


Thomas & Betts. Your best connection for innovative solutions.

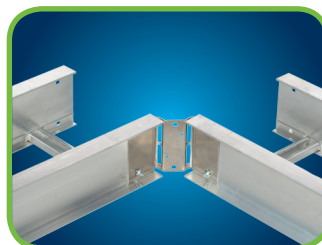
# Fast and easy installation



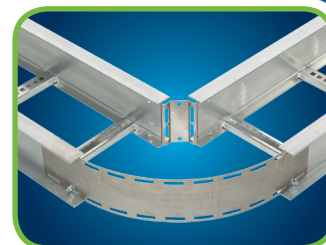
Fasten flexible coupler to tray.



Bend.



Fasten to the other length of cable tray.



Fasten the strap.

## Aluminum – Flexible coupler



| CAT. NO.     | MATERIAL | SIDE RAIL HEIGHT (IN.) | TRAY WIDTH (IN.) |
|--------------|----------|------------------------|------------------|
| ABW-(*)06HBP | Aluminum | 4 to 7                 | 06               |
| ABW-(*)09HBP |          |                        | 09               |
| ABW-(*)12HBP |          |                        | 12               |
| ABW-(*)18HBP |          |                        | 18               |
| ABW-(*)24HBP |          |                        | 24               |
| ABW-(*)30HBP |          |                        | 30               |
| ABW-(*)36HBP |          |                        | 36               |

\* Insert side rail height

## Optional rung information (Provides additional cable support)

| CAT. NO.    | MATERIAL | TRAY WIDTH (IN.) |
|-------------|----------|------------------|
| ABW-R(*)HBP | Aluminum | 06               |
|             |          | 09               |
|             |          | 12               |
|             |          | 18               |
|             |          | 24               |
|             |          | 30               |
|             |          | 36               |

\* Insert tray width

## Steel – Flexible coupler



| CAT. NO.          | MATERIAL PREFIX   | SIDE RAIL HEIGHT (IN.) | TRAY WIDTH (IN.) |
|-------------------|-------------------|------------------------|------------------|
| (Prefix)-(*)06HBP | SPW<br>SHW<br>SSW | 3 to 7                 | 06               |
| (Prefix)-(*)09HBP |                   |                        | 09               |
| (Prefix)-(*)12HBP |                   |                        | 12               |
| (Prefix)-(*)18HBP |                   |                        | 18               |
| (Prefix)-(*)24HBP |                   |                        | 24               |
| (Prefix)-(*)30HBP |                   |                        | 30               |
| (Prefix)-(*)36HBP |                   |                        | 36               |

\* Insert side rail height

## Optional rung information (Provides additional cable support)

| CAT. NO.        | MATERIAL PREFIX   | TRAY WIDTH (IN.) |
|-----------------|-------------------|------------------|
| (Prefix)-R06HBP | SPW<br>SHW<br>SSW | 06               |
| (Prefix)-R09HBP |                   | 09               |
| (Prefix)-R12HBP |                   | 12               |
| (Prefix)-R18HBP |                   | 18               |
| (Prefix)-R24HBP |                   | 24               |
| (Prefix)-R30HBP |                   | 30               |
| (Prefix)-R36HBP |                   | 36               |

## Load rating with optional rung

| TRAY WIDTH                     | SIDE RAIL HEIGHT          |  |                                 |
|--------------------------------|---------------------------|--|---------------------------------|
|                                | 3 IN.<br>(76 MM)          | 4 AND 5 IN.<br>(102 AND 127 MM)                                  | 6 AND 7 IN.<br>(152 AND 178 MM) |
| 36 in.<br>(914 mm)             | 50 lb./ft.<br>(74 kg/m)   | Al: 75 lb./ft.<br>(112 kg/m)      Steel: 50 lb./ft.<br>(74 kg/m) | 100 lb./ft.<br>(149 kg/m)       |
| 30 in.<br>(762 mm)             | 75 lb./ft.<br>(112 kg/m)  |  |                                 |
| 6 to 24 in.<br>(152 to 610 mm) | 100 lb./ft.<br>(149 kg/m) |  |                                 |

### Atlantic Provinces

Thomas & Betts Limited  
Tel.: (902) 450-1307  
Toll Free: 1-877-862-4357  
Fax: (902) 450-1309

### Quebec

Thomas & Betts Limited  
Tel.: (450) 466-1102  
Toll Free: 1-800-465-1399  
Fax: (450) 466-1163

### Ontario

Thomas & Betts Limited  
Tel.: (905) 635-7888  
Toll Free: 1-877-291-7771  
Fax: (905) 635-7889

### Manitoba/Saskatchewan

Thomas & Betts Limited  
Tel.: (604) 598-9811  
Toll Free: 1-866-540-8220  
Fax: (604) 598-9840

### Alberta

Thomas & Betts Limited  
Tel.: (780) 424-7092  
Toll Free: 1-888-664-5666  
Fax: (780) 424-7093  
Toll Free: 1-866-424-4082

### British Columbia

Thomas & Betts Limited  
Tel.: (604) 598-9811  
Toll Free: 1-866-540-8220  
Fax: (604) 598-9840

