

It's time! Eliminate building support frames on site.

Introducing the **Iberville®**
BCBK-01 adjustable
wood stud bracket
that meets requirements
of C.E.C., rule 12-3010,
subrules (2) and (3).

Quick and easy to install, the Iberville® **BCBK-01** adjustable support bracket eliminates the need to build extra supports on site.

- Use with welded device boxes more than 4 inches wide
- Use when sectional boxes are ganged
- Easily adjust to any drywall thickness from ½ inch to 2 x 5/8 inch
- For 2 x 4 inch or 2 x 3 inch wood studs
- Embossed guides quickly adjust the bracket for any box depth
- Perfect solution to support boxes between two wood studs
- CSA Certified
- Designed and manufactured in Canada



Saves time and money

No need to build a wood frame

One bracket fits all applications



Thomas & Betts. Your best connection for innovative solutions.

So fast and easy to install !



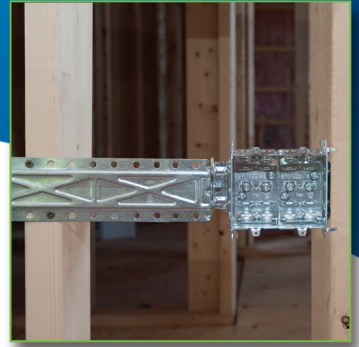
Screw box on stud.



Screw bracket on box.



Screw bracket to opposite wood stud.



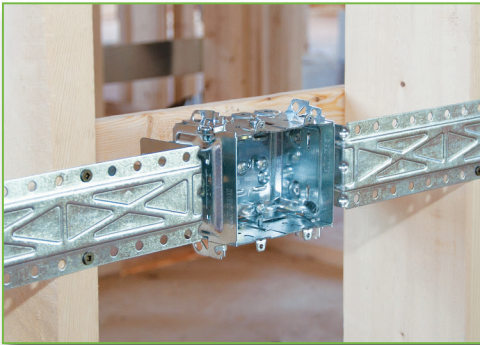
Code compliant installation.

Meets code requirements quickly and efficiently

The Canadian Electrical Code, Rule 12-3010

Outlet Box Supports require device boxes to be firmly secured to studs, joists or similar structural units. Subrule (2) requires ganged sectional boxes to be secured to metal supports or to wooden boards at least 19 mm thick that are rigidly secured to the structural unit. Subrule (3) requires boxes greater than 100 mm (4 in.) be secured on at least two sides.

View our installation video at : www.tnb.ca/video



Solution between two studs.



Using the guides built into the bracket, box depth can be adjusted to fit the application.



This installation does **NOT COMPLY** with C.E.C. 12-3010 (3).

Iberville® BCBK-01 Box Bracket



CAT. NO.	DESCRIPTION	DIMENSIONS (in.)	PACKAGING
BCBK-01	Adjustable Support Bracket for Wood Studs	15.5 L. x 2.5 H.	25 per Box

Atlantic Provinces

Thomas & Betts Limited
Tel.: (902) 450-1307
Toll Free: 1-877-862-4357
Fax: (902) 450-1309

Quebec

Thomas & Betts Limited
Tel.: (450) 466-1102
Toll Free: 1-800-465-1399
Fax: (450) 466-1163

Ontario

Thomas & Betts Limited
Tel.: (905) 858-1010
Toll Free: 1-877-291-7771
Fax: (905) 858-1080

Manitoba/Saskatchewan

Thomas & Betts Limited
Tel.: (604) 598-9811
Toll Free: 1-866-540-8220
Fax: (604) 598-9840

Alberta

Thomas & Betts Limited
Tel.: (780) 424-7092
Toll Free: 1-888-664-5666
Fax: (780) 424-7093
Toll Free: 1-866-424-4082

British Columbia

Thomas & Betts Limited
Tel.: (604) 598-9811
Toll Free: 1-866-540-8220
Fax: (604) 598-9840