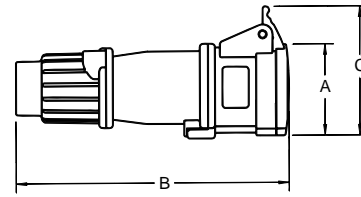
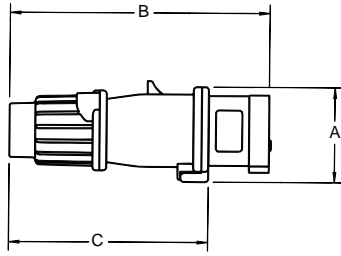


# Russellstoll®

## UniGard™ Series IP44 Dimensions

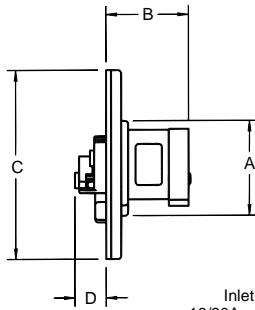


### Plug IP44

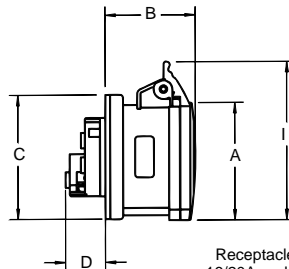
Cat. No.	A		B		C		Cord Grip Range	
	inches	mm	inches	mm	inches	mm	inches	mm
16/20A 2P3W	2.26	58	6.20	157	4.76	121	.570-.710	14-18
16/20A 3P4W	2.52	64	6.47	164	5.04	128	.570-.710	14-18
16/20A 4P5W	2.85	73	7.02	178	5.58	142	.570-.710	14-18
30/32A 2P3W	2.85	73	7.37	187	5.58	142	.675-.910	17-23
30/32A 3P4W	2.85	73	7.37	187	5.58	142	.675-.910	17-23
30/32A 4P5W	3.13	80	8.15	207	6.36	162	.675-.910	17-23

### Connector IP44

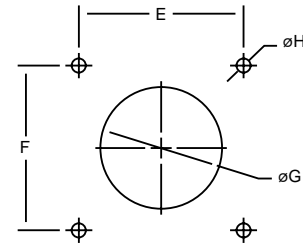
Cat. No.	A		B		C		Cord Grip Range	
	inches	mm	inches	mm	inches	mm	inches	mm
16/20A 2P3W	2.18	55	6.53	166	3.07	78	.570-.710	14-18
16/20A 3P4W	2.43	62	6.83	173	3.33	85	.570-.710	14-18
16/20A 4P5W	2.81	71	7.41	188	3.79	96	.570-.710	14-18
30/32A 2P3W	2.81	71	7.81	198	3.79	96	.675-.910	17-23
30/32A 3P4W	2.81	71	7.81	198	3.79	96	.675-.910	17-23
30/32A 4P5W	3.09	79	8.62	219	4.17	106	.675-.910	17-23



Inlet IP44  
16/20A and 30/32A



Receptacle IP44  
16/20A and 30/32A



### Inlet IP44

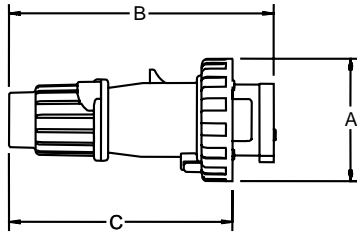
Cat. No.	A		B		C		D		E		F		G		H	
	inches	mm	inches	mm	inches	mm	inches	mm	inches	mm	inches	mm	inches	mm	inches	mm
16/20A 2P3W	2.26	58	1.96	50	4.50	114	.75	19	3.87	98	3.87	98	2.38	60	.282	7.2
16/20A 3P4W	2.52	64	1.96	50	4.50	114	.75	19	3.87	98	3.87	98	2.38	60	.282	7.2
16/20A 4P5W	2.85	73	1.96	50	4.50	114	.75	19	3.87	98	3.87	98	2.38	60	.282	7.2
30/32A 2P3W	2.85	73	2.32	59	4.50	114	1.32	34	3.87	98	3.87	98	2.38	60	.282	7.2
30/32A 3P4W	2.85	73	2.32	59	4.50	114	1.32	34	3.87	98	3.87	98	2.38	60	.282	7.2
30/32A 4P5W	3.13	80	2.32	59	4.50	114	1.32	34	3.87	98	3.87	98	2.38	60	.282	7.2

### Receptacle IP44

Cat. No.	A		B		C		D		E		F		G		H		I	
	inches	mm	inches	mm	inches	mm	inches	mm	inches	mm	inches	mm	inches	mm	inches	mm	inches	mm
16/20A 2P3W	2.18	55	2.11	54	2.97	76	0.94	24	2.36	60	2.36	60	2.38	60	.219	5.5	3.07	78
16/20A 3P4W	2.43	62	2.13	54	2.97	76	0.94	24	2.36	60	2.36	60	2.38	60	.219	5.5	3.33	85
16/20A 4P5W	2.81	71	2.17	55	2.97	76	0.94	24	2.36	60	2.36	60	2.38	60	.219	5.5	3.79	96
30/32A 2P3W	2.81	71	2.56	65	2.97	76	1.52	39	2.36	60	2.36	60	2.38	60	.219	5.5	3.79	96
30/32A 3P4W	2.81	71	2.56	65	2.97	76	1.52	39	2.36	60	2.36	60	2.38	60	.219	5.5	3.79	96
30/32A 4P5W	3.09	79	2.60	66	2.97	76	1.52	39	2.36	60	2.36	60	2.38	60	.219	5.5	4.17	106

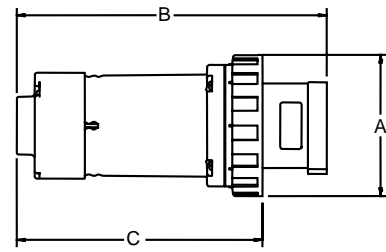
# Russellstoll®

## UniGard™ Series IP67 Dimensions



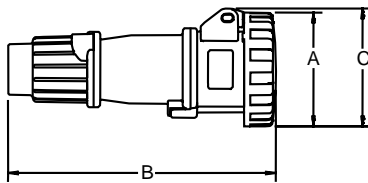
### Plug IP67 16/20A and 30/32A

Cat. No.	A		B		C		Cord Grip Range	
	inches	mm	inches	mm	inches	mm	inches	mm
16/20A 2P3W	2.87	73	6.20	157	5.23	133	.570-.710	14-18
16/20A 3P4W	3.17	81	6.47	164	5.51	140	.570-.710	14-18
16/20A 4P5W	3.48	88	7.02	178	6.06	154	.570-.710	14-18
30/32A 2P3W	3.66	93	7.37	187	6.13	156	.675-.910	17-23
30/32A 3P4W	3.66	93	7.37	187	6.13	156	.675-.910	17-23
30/32A 4P5W	3.96	101	8.15	207	6.91	176	.675-.910	17-23



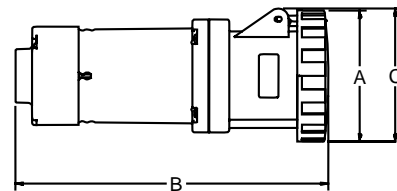
### Plug IP67 60/63A and 100/125A

Cat. No.	A		B		C		Cord Grip Range	
	inches	mm	inches	mm	inches	mm	inches	mm
60/63A 2P3W	4.41	112	9.68	246	7.67	195	.937-1.375	24-35
60/63A 3P4W	4.41	112	9.68	246	7.67	195	.937-1.375	24-35
60/63A 4P5W	4.41	112	9.68	246	7.67	195	.937-1.375	24-35
100/125A 3P4W	5.06	129	12.16	309	9.83	250	1.265-1.790	32-45
100/125A 4P5W	5.06	129	12.16	309	9.83	250	1.265-1.790	32-45



### Connector IP67 16/20A and 30/32A

Cat. No.	A		B		C		Cord Grip Range	
	inches	mm	inches	mm	inches	mm	inches	mm
16/20A 2P3W	2.87	73	6.75	171	2.97	75	.570-.710	14-18
16/20A 3P4W	3.17	81	7.04	179	3.28	83	.570-.710	14-18
16/20A 4P5W	3.48	88	7.62	194	3.75	95	.570-.710	14-18
30/32A 2P3W	3.66	93	8.04	204	4.04	103	.675-.910	17-23
30/32A 3P4W	3.66	93	8.04	204	4.04	103	.675-.910	17-23
30/32A 4P5W	3.96	101	8.83	224	4.03	102	.675-.910	17-23



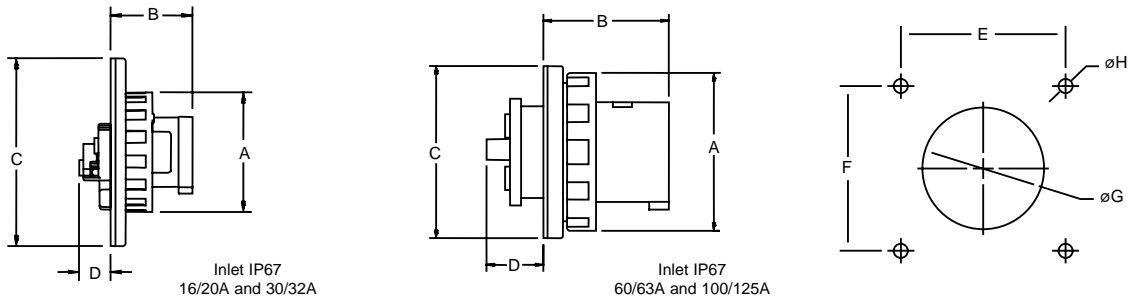
### Connector IP67 60/63A and 100/125A

Cat. No.	A		B		C		Cord Grip Range	
	inches	mm	inches	mm	inches	mm	inches	mm
60/63A 2P3W	4.41	112	10.52	267	4.47	114	.937-1.375	24-35
60/63A 3P4W	4.41	112	10.52	267	4.47	114	.937-1.375	24-35
60/63A 4P5W	4.41	112	10.52	267	4.47	114	.937-1.375	24-35
100/125A 3P4W	5.06	129	12.80	325	5.06	129	1.265-1.790	32-45
100/125A 4P5W	5.06	129	12.80	325	5.06	129	1.265-1.790	32-45

RUSSELLSTOLL® UNIGARD™

# Russellstoll®

## UniGard™ Series IP67 Dimensions

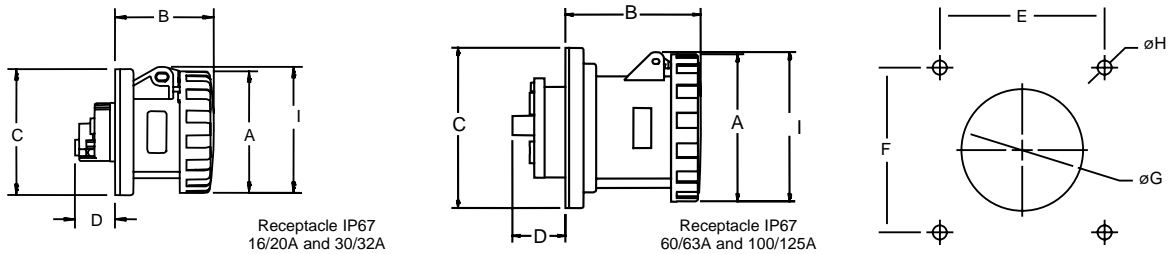


### Inlet IP67 16/20A and 30/32A

Cat. No.	A		B		C		D		E		F		G		H	
	inches	mm	inches	mm	inches	mm	inches	mm	inches	mm	inches	mm	inches	mm	inches	mm
16/20A 2P3W	2.87	73	1.96	50	4.50	114	.75	19	3.87	98	3.87	98	2.38	60	.282	7.2
16/20A 3P4W	3.17	81	1.96	50	4.50	114	.75	19	3.87	98	3.87	98	2.38	60	.282	7.2
16/20A 4P5W	3.48	88	1.96	50	4.50	114	.75	19	3.87	98	3.87	98	2.38	60	.282	7.2
30/32A 2P3W	3.66	93	2.32	59	4.50	114	1.32	34	3.87	98	3.87	98	2.38	60	.282	7.2
30/32A 3P4W	3.66	93	2.32	59	4.50	114	1.32	34	3.87	98	3.87	98	2.38	60	.282	7.2
30/32A 4P5W	3.96	101	2.32	59	4.50	114	1.32	34	3.87	98	3.87	98	2.38	60	.282	7.2

### Inlet IP67 60/63A and 100/125A

Cat. No.	A		B		C		D		E		F		G		H	
	inches	mm	inches	mm	inches	mm	inches	mm	inches	mm	inches	mm	inches	mm	inches	mm
60/63A 2P3W	4.41	112	3.44	87	4.50	114	1.68	43	3.87	98	3.87	98	3.25	83	.282	7.2
60/63A 3P4W	4.41	112	3.44	87	4.50	114	1.68	43	3.87	98	3.87	98	3.25	83	.282	7.2
60/63A 4P5W	4.41	112	3.44	87	4.50	114	1.68	43	3.87	98	3.87	98	3.25	83	.282	7.2
100/125A 3P4W	5.06	129	3.88	99	5.50	140	1.94	49	4.87	124	4.87	124	3.75	95	.282	7.2
100/125A 4P5W	5.06	129	3.88	99	5.50	140	1.94	49	4.87	124	4.87	124	3.75	95	.282	7.2



### Receptacle IP67 16/20A and 30/32A

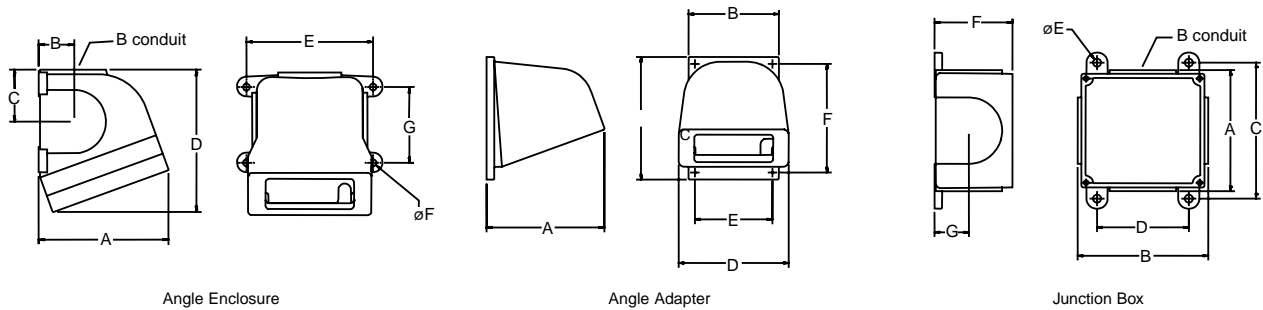
Cat. No.	A		B		C		D		E		F		G		H		I	
	inches	mm	inches	mm	inches	mm	inches	mm	inches	mm	inches	mm	inches	mm	inches	mm	inches	mm
16/20A 2P3W	2.87	73	2.32	59	2.97	76	.94	24	2.36	60	2.36	60	2.50	65	.219	5.5	2.97	75
16/20A 3P4W	3.17	81	2.34	60	2.97	76	.94	24	2.36	60	2.36	60	2.50	65	.219	5.5	3.28	83
16/20A 4P5W	3.48	88	2.37	60	2.97	76	.94	24	2.36	60	2.36	60	2.50	65	.219	5.5	3.75	95
30/32A 2P3W	3.66	93	2.79	71	2.97	76	1.52	39	2.36	60	2.36	60	2.50	65	.219	5.5	4.04	103
30/32A 3P4W	3.66	93	2.79	71	2.97	76	1.52	39	2.36	60	2.36	60	2.50	65	.219	5.5	4.04	103
30/32A 4P5W	3.96	101	2.81	71	2.97	76	1.52	39	2.36	60	2.36	60	2.50	65	.219	5.5	4.03	102

### Receptacle IP67 60/63A and 100/125A

Cat. No.	A		B		C		D		E		F		G		H		I	
	inches	mm	inches	mm	inches	mm	inches	mm	inches	mm	inches	mm	inches	mm	inches	mm	inches	mm
60/63A 2P3W	4.41	112	4.16	106	4.50	114	1.68	43	3.87	98	3.87	98	3.5	89	.282	7.2	4.47	114
60/63A 3P4W	4.41	112	4.16	106	4.50	114	1.68	43	3.87	98	3.87	98	3.5	89	.282	7.2	4.47	114
60/63A 4P5W	4.41	112	4.16	106	4.50	114	1.68	43	3.87	98	3.87	98	3.5	89	.282	7.2	4.47	114
100/125A 3P4W	5.06	129	4.52	115	5.50	140	1.94	49	4.87	124	4.87	124	4.5	114	.282	7.2	5.06	129
100/125A 4P5W	5.06	129	4.52	115	5.50	140	1.94	49	4.87	124	4.87	124	4.5	114	.282	7.2	5.06	129

# Russellstoll®

## UniGard™ IEC 309 Boxes and Adapters



### 20° Angle Enclosures\*

Cat. No.	Conduit Size	Use	A		B		C		D		E		F		G	
			inches	mm	inches	mm	inches	mm	inches	mm	inches	mm	inches	mm	Inches	mm
BE3-B75	¾"	20A & 30A Devices	3.34	85	.97	25	1.12	28	4.12	105	4.00	102	.25	6	2.38	60
BE3-B100	1"	20A & 30A Devices	3.34	85	.97	25	1.12	28	4.12	105	4.00	102	.25	6	2.38	60
AE6-B125	1¼"	60A Devices	5.13	130	1.41	36	2.05	52	5.62	143	5.00	127	.28	7	3.00	76
AE6-B150	1½"	60A Devices	5.13	130	1.41	36	2.05	52	5.62	143	5.00	127	.28	7	3.00	76
AE10-B150	1½"	100A Devices	7.05	179	1.81	46	2.68	68	6.88	175	5.50	140	.34	9	4.00	102
AE10-B200	2"	100A Devices	7.05	179	1.81	46	2.68	68	6.88	175	5.50	140	.34	9	4.00	102

\* For use where there is no existing T&B Russellstoll JB series junction box installed. For 20/30A inlets, use 60A size.

### 20° Angle Adapters\*

Cat. No.	Use	A		B		C		D		E		F	
		inches	mm	inches	mm	inches	mm	inches	mm	inches	mm	inches	mm
AA3	20A & 30A Devices	3.17	81	3.00	76	4.25	108	3.00	76	2.50	64	3.75	95
AA6L	60A Devices	5.23	133	4.00	102	5.43	138	4.88	124	3.44	87	4.81	122
AA10L	100A Devices	7.36	187	5.50	140	5.50	140	6.00	152	4.87	124	4.87	124

\* To be used with JB series junction boxes or surface mount. For 20/30A inlets, use 60A size.

### Rectangular Junction Boxes\*

Cat. No.	Conduit Size	Use	A		B		C		D		E		F		G	
			inches	mm	inches	mm	inches	mm	inches	mm	inches	mm	inches	mm	Inches	mm
JB3-B75	¾"	20A & 30A Devices	2.94	75	4.19	106	3.69	94	2.69	68	.25	6	2.38	60	1.25	32
JB3-B100	1"	20A & 30A Devices	2.94	75	4.19	106	3.69	94	2.69	68	.25	6	2.38	60	1.25	32
JB6-B125	1¼"	60A Devices	4.00	102	5.63	143	4.94	125	3.81	97	.34	9	3.00	76	1.50	38
JB6-B150	1½"	60A Devices	4.00	102	5.63	143	4.94	125	3.81	97	.34	9	3.00	76	1.50	38
JB10-B150	1½"	100A Devices	5.50	140	5.50	140	4.25	108	6.75	171	.34	9	3.75	95	2.00	51
JB10-B200	2"	100A Devices	5.50	140	5.50	140	4.25	108	6.75	171	.34	9	3.75	95	2.00	51

\* Unless otherwise specified, junction boxes are furnished with one conduit size at location B. To be used with AA series angle adapters. For 20/30A inlets, use 60A size.

RUSSELLSTOLL® UNIGARD™