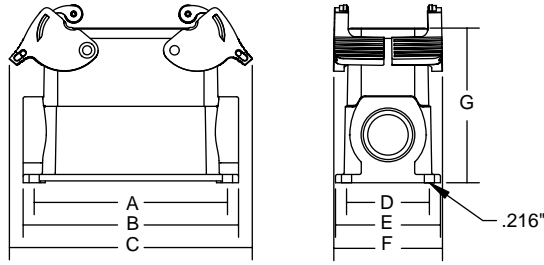


Dimensions

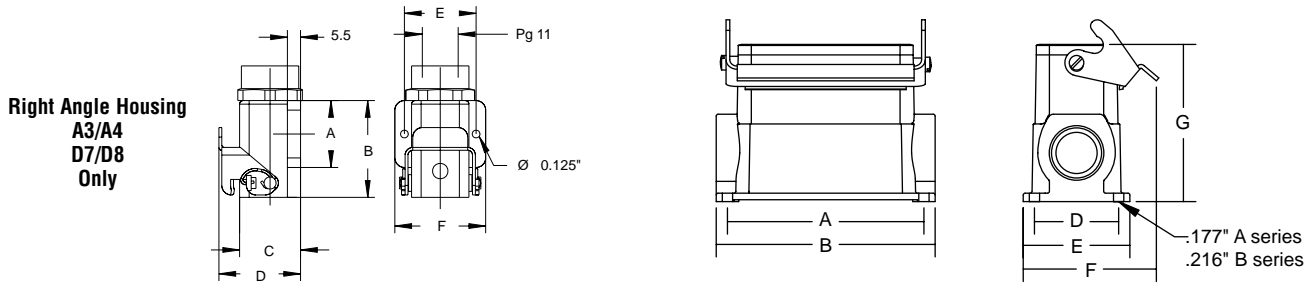
Mounting Dimensions for Double Lever Box Bases



HOUSING SERIES					CAT. NO.	DIMENSIONS ARE IN INCHES / (MILLIMETERS)						
A, B, T, K	C, V	D	DD	M		A	B	C	D	E	F	G
A32	D50				BB_32A__	3.70 / (94)	4.17 / (106)	5.04 / (128)	1.81 / (46)	2.20 / (56)	2.76 / (70)	3.40 / (86.5)
B10, T10	V3		DD42	M3	BB_10E	3.23 / (82)	3.66 / (93)	4.33 / (110)	1.57 / (40)	2.05 / (52)	2.28 / (58)	2.05 / (52)
					BB_10EH__	3.23 / (82)	3.66 / (93)	4.33 / (110)	1.77 / (45)	2.24 / (57)	2.28 / (58)	2.92 / (74)
B16, T16	C6, V6	D40	DD72	M5	BB_16E	4.13 / (105)	4.61 / (117)	5.16 / (131)	1.77 / (45)	2.24 / (57)	2.28 / (58)	2.68 / (68)
					BB_16EH__	4.13 / (105)	4.61 / (117)	5.16 / (131)	1.77 / (45)	2.24 / (57)	2.28 / (58)	3.31 / (84)
B24, T24, K12	V10, V16	D64	DD108	M7	BB_24E	5.20 / (132)	5.67 / (144)	6.18 / (157)	1.77 / (45)	2.24 / (57)	2.28 / (58)	2.68 / (68)
					BB_24EH__	5.20 / (132)	5.67 / (144)	6.18 / (157)	1.77 / (45)	2.24 / (57)	2.28 / (58)	3.31 / (84)
B32	C12	D80	DD144		BB_32E	4.41 / (112)	4.88 / (124)	5.28 / (134)	2.64 / (67)	3.20 / (81.5)	3.62 / (92)	2.83 / (72)

H - HIGH PROFILE

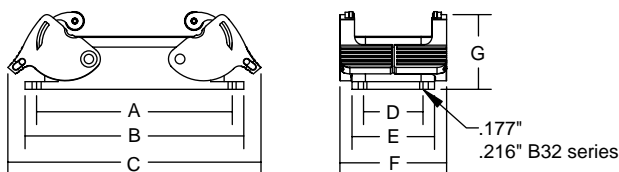
Mounting Dimensions for Single Lever Box Bases



HOUSING SERIES					CAT. NO.	DIMENSIONS ARE IN INCHES / (MILLIMETERS)						
A, B, T, K	C, V	D	DD	M		A	B	C	D	E	F	G
A3, A4		D7, D8			BB403A(P) ▶	1.10 / (28)	1.59 / (40.5)	1.00 / (25.5)	1.42 / (36)	1.18 / (30)	1.50 / (38)	-
A10		D15			BB_10A	1.89 / (48)	-	3.66 / (93)	1.57 / (40)	1.97 / (50)	2.32 / (59)	2.05 / (52)
A16		D25			BB_16A	2.52 / (64)	-	4.29 / (109)	1.57 / (40)	1.97 / (50)	2.32 / (59)	2.24 / (57)
B6, T6			DD24	M2	BB_06	2.76 / (70)	3.31 / (84)	-	1.57 / (40)	2.05 / (52)	2.72 / (69)	2.05 / (52)
					BB_06H075	2.76 / (70)	3.31 / (84)	-	1.77 / (45)	2.24 / (57)	2.72 / (69)	2.92 / (74)
					BB_06H100	2.76 / (70)	3.31 / (84)	-	1.77 / (45)	2.24 / (57)	2.72 / (69)	2.92 / (74)
B10, T10	V3		DD42	M3	BB_10	3.23 / (82)	3.66 / (93)	-	1.57 / (40)	2.05 / (52)	2.80 / (71)	2.05 / (52)
					BB_10H075	3.23 / (82)	3.66 / (93)	-	1.77 / (45)	2.24 / (57)	2.80 / (71)	2.92 / (74)
					BB_10H100	3.23 / (82)	3.66 / (93)	-	1.77 / (45)	2.24 / (57)	2.80 / (71)	2.92 / (74)
B16, T16	C6, V6	D40	DD72	M5	BB_16	4.13 / (105)	4.61 / (117)	-	1.77 / (45)	2.24 / (57)	2.91 / (74)	2.68 / (68)
					BB_16H__	4.13 / (105)	4.61 / (117)	-	1.77 / (45)	2.24 / (57)	2.91 / (74)	3.31 / (84)
B24, T24, K12	V10, V16	D64	DD108	M7	BB_24	5.20 / (132)	5.67 / (144)	-	1.77 / (45)	2.24 / (57)	2.91 / (74)	2.68 / (68)
					BB_24H__	5.20 / (132)	5.67 / (144)	-	1.77 / (45)	2.24 / (57)	2.91 / (74)	3.31 / (84)
B48, K24 V32	V20, V26,	D128	DD216		BB_48	4.37 / (111)	5.71 / (145)	-	4.17 / (106)	4.72 / (120)	6.18 / (157)	3.94 / (100)

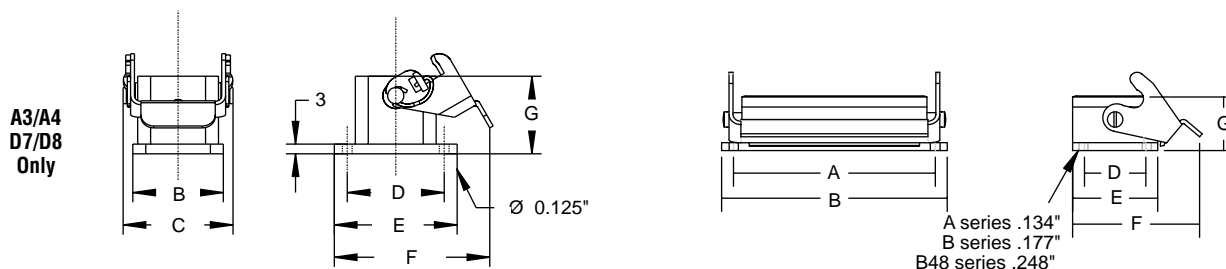
▶ SUFFIX: A - ALUMINUM, AP - PLASTIC, H - HIGH PROFILE

Mounting Dimensions for Double Lever Panel Bases



HOUSING SERIES					CAT. NO.	DIMENSIONS ARE IN INCHES / (MILLIMETERS)						
A, B, T, K	C, V	D	DD	M		A	B	C	D	E	F	G
A32		D50			PB132A	3.62 / (92)	4.02 / (102)	5.04 / (128)	1.65 / (28)	2.24 / (57)	2.76 / (70)	1.10 / (28)
B10, T10	V3		DD42	M3	PB110E	3.27 / (83)	3.66 / (93)	4.33 / (110)	1.26 / (32)	1.69 / (43)	2.28 / (58)	1.06 / (27)
B16, T16	C6, V6	D40	DD72	M5	PB116E	4.05 / (103)	4.49 / (114)	5.16 / (131)	1.26 / (32)	1.69 / (43)	2.28 / (58)	1.06 / (27)
B24, T24, K12	V10, V16	D64	DD108	M7	PB124E	5.12 / (130)	5.51 / (140)	6.19 / (157)	1.26 / (32)	1.69 / (43)	2.28 / (58)	1.06 / (27)
B32	C12	D80	DD144		PB132E	4.33 / (110)	4.88 / (124)	5.28 / (134)	2.56 / (65)	3.11 / (79)	3.62 / (92)	1.18 / (30)

Mounting Dimensions for Single Lever Panel Bases

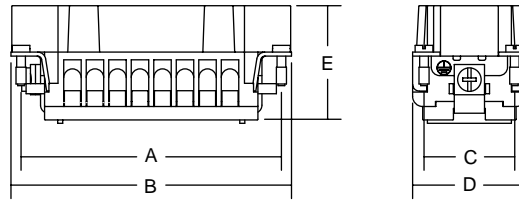


HOUSING SERIES					CAT. NO.	DIMENSIONS ARE IN INCHES / (MILLIMETERS)						
A, B, T, K	C, V	D	DD	M		A	B	C	D	E	F	G
A3, A4		D7, D8			PB303A (P) ▶	-	1.10 / (28)	1.34 / (34)	1.18 / (30)	1.50 / (38)	1.67 / (42.5)	.95 / (24)
					PB403A (P) ▶	-	1.10 / (28)	1.38 / (35)	1.18 / (30)	1.58 / (40)	1.85 / (47)	.95 / (24)
					PB503A (P)	-	1.10 / (28)	1.59 / (40.5)	1.00 / (25.5)	1.42 / (36)	1.18 / (30)	1.50 / (38)
A10		D15			PB310A	2.76 / (70)	3.19 / (81)	-	.68 / (17.5)	1.20 / (30.5)	1.93 / (49)	1.02 / (26)
					PB410A	2.76 / (70)	3.19 / (81)	-	.68 / (17.5)	1.20 / (30.5)	2.95 / (75)	1.02 / (26)
A16	D25				PB316A	3.39 / (86)	3.78 / (96)	-	.68 / (17.5)	1.20 / (30.5)	1.93 / (49)	1.02 / (26)
					PB416A	3.39 / (86)	3.78 / (96)	-	.68 / (17.5)	1.20 / (30.5)	2.95 / (75)	1.02 / (26)
B6, T6			DD24	M2	PB306	2.76 / (70)	3.15 / (80)	-	1.26 / (32)	1.69 / (43)	2.56 / (65)	1.06 / (27)
					PB406	2.76 / (70)	3.15 / (80)	-	1.26 / (32)	1.69 / (43)	3.54 / (90)	1.06 / (27)
B10, T10	V3		DD42	M3	PB310	3.27 / (83)	3.66 / (93)	-	1.26 / (32)	1.69 / (43)	2.64 / (67)	1.06 / (27)
					PB410	3.27 / (83)	3.66 / (93)	-	1.26 / (32)	1.69 / (43)	3.62 / (92)	1.06 / (27)
B16, T16	C6, V6	D40	DD72	M5	PB316	4.06 / (103)	4.49 / (114)	-	1.26 / (32)	1.69 / (43)	2.64 / (67)	1.06 / (27)
					PB416	4.06 / (103)	4.49 / (114)	-	1.26 / (32)	1.69 / (43)	3.62 / (92)	1.06 / (27)
B24, T24, K12	V10, V16	D64	DD108	M7	PB324	5.12 / (130)	5.51 / (140)	-	1.26 / (32)	1.69 / (43)	2.64 / (67)	1.06 / (27)
					PB424	5.12 / (130)	5.51 / (140)	-	1.26 / (32)	1.69 / (43)	3.62 / (92)	1.06 / (27)
B48, K24 V32	V20, V26,	D128	DD216		PB348	5.83 / (148)	6.50 / (165)	-	2.76 / (70)	3.54 / (90)	6.18 / (157)	1.61 / (41)
					PB448	5.83 / (148)	6.50 / (165)	-	2.76 / (70)	3.54 / (90)	6.81 / (173)	1.61 / (41)

▶ SUFFIX: A - ALUMINUM, P - PLASTIC

Dimensions

Mounting Dimensions for Screw and Crimp Terminal Inserts



INSERT SERIES					MATING	DIMENSIONS ARE IN INCHES / (MILLIMETERS)				
A, B, T, K	C, V	D	DD	M		A	B	C	D	E
A3, A4					BOTH	-	0.83 / (21)	-	0.83 / (21)	0.98 / (25)
		D7, D8			FEMALE	-	0.83 / (21)	-	0.83 / (21)	1.25 / (31.8)
					MALE	-	0.83 / (21)	-	0.83 / (21)	1.19 / (30.2)
A10		D15			FEMALE	1.95 / (49.5)	2.22 / (56.5)	0.63 / (16)	1.34 / (34)	1.14 / (29)
					MALE	1.95 / (49.5)	2.22 / (56.5)	0.63 / (16)	1.34 / (34)	1.26 / (32)
A16		D25			FEMALE	2.60 / (66)	2.87 / (73)	0.63 / (16)	1.34 / (34)	1.14 / (29)
					MALE	2.60 / (66)	2.87 / (73)	0.63 / (16)	1.34 / (34)	1.26 / (32)
A32		D50			FEMALE	2.60 / (66)	2.87 / (73)	0.63 / (16) x 2	1.34 / (34)	1.14 / (29)
					MALE	2.60 / (66)	2.87 / (73)	0.63 / (16) x 2	1.34 / (34)	1.26 / (32)
B6, T6			DD24	M2	FEMALE	1.73 / (44)	2.01 / (51)	1.063 / (27)	1.34 / (34)	1.46 / (37)
					MALE	1.73 / (44)	2.01 / (51)	1.063 / (27)	1.34 / (34)	1.38 / (35)
B10, T10	V3		DD42	M3	FEMALE	2.24 / (57)	2.52 / (64)	1.063 / (27)	1.34 / (34)	1.46 / (37)
					MALE	2.24 / (57)	2.52 / (64)	1.063 / (27)	1.34 / (34)	1.38 / (35)
B16, T16	C6, V6	D40	DD72	M5	FEMALE	3.05 / (77.5)	3.33 / (84.5)	1.063 / (27)	1.34 / (34)	1.48 / (37.5)
					MALE	3.05 / (77.5)	3.33 / (84.5)	1.063 / (27)	1.34 / (34)	1.40 / (35.5)
B24, T24, K12	V10, V16	D64	DD108	M7	FEMALE	4.09 / (104)	4.37 / (111)	1.063 / (27)	1.34 / (34)	1.48 / (37.5)
					MALE	4.09 / (104)	4.37 / (111)	1.063 / (27)	1.34 / (34)	1.40 / (35.5)
B32	C12	D80	DD144		FEMALE	3.05 / (77.5)	3.33 / (84.5)	1.063 / (27) x 2	1.34 / (34)	1.48 / (37.5)
					MALE	3.05 / (77.5)	3.33 / (84.5)	1.063 / (27) x 2	1.34 / (34)	1.40 / (35.5)
B48, K24	V20, V26, V32	D128	DD216		FEMALE	4.09 / (104)	4.37 / (111)	1.063 / (27) x 2	1.34 / (34)	1.48 / (37.5)
					MALE	4.09 / (104)	4.37 / (111)	1.063 / (27) x 2	1.34 / (34)	1.40 / (35.5)

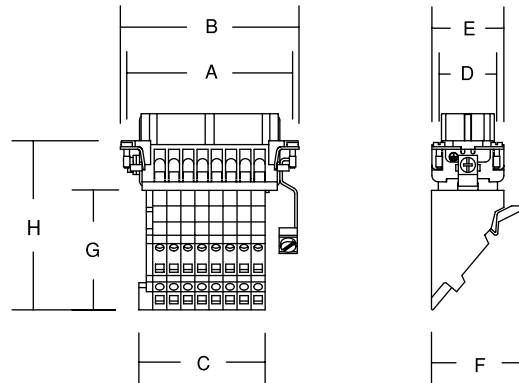
Insert Screw Torque Specifications

SERIES	Screw Location	Unit of Measure	Pozi-Drive point Screwdriver	Std. Straight-blade Screwdriver
A3 A4	wire termination screw	Newton meters	0.4	0.9
		Inch ounces	57	127
	insert grounding screw	Newton meters	0.6	0.8
		Inch ounces	85	113
D7 D8	insert grounding screw	Newton meters	0.4	0.4
		Inch ounces	57	57
A10 A16 A32	wire termination screw	Newton meters	0.4	0.9
		Inch ounces	57	127
	insert fastening screw	Newton meters	0.7	1.1
		Inch ounces	99	156
	insert grounding screw	Newton meters	0.7	1.3
		Inch ounces	99	184
D15 D25 D50	insert fastening screw	Newton meters	0.7	1.1
		Inch ounces	99	156
	insert grounding screw	Newton meters	0.7	1.3
		Inch ounces	99	184
B T V	wire termination screw	Newton meters	0.6	0.4
		Inch ounces	85	57
	insert fastening screw	Newton meters	0.7	1.1
		Inch ounces	99	156
	insert grounding screw	Newton meters	1.2	1.9
		Inch ounces	170	269
C	wire termination screw	Newton meters	0.7	1.3
		Inch ounces	99	184
	insert fastening screw	Newton meters	0.7	1.1
		Inch ounces	99	156
	insert grounding screw	Newton meters	2.3	2.3
		Inch ounces	326	326
K	wire termination screw	Newton meters	*0.5 / 1.4	-
		Inch ounces	*71 / 198	-
	insert fastening screw	Newton meters	0.7	-
		Inch ounces	99	-
	insert grounding screw	Newton meters	2.3	-
		Inch ounces	326	-

* 16A / 80A contacts

Insert Mounting Screws accept a blade, cross-point or Pozi-drive screwdriver heads. Specifications refer to Pozi-drive or bladed common torque only.

Mounting Dimensions for Wiring Adapters

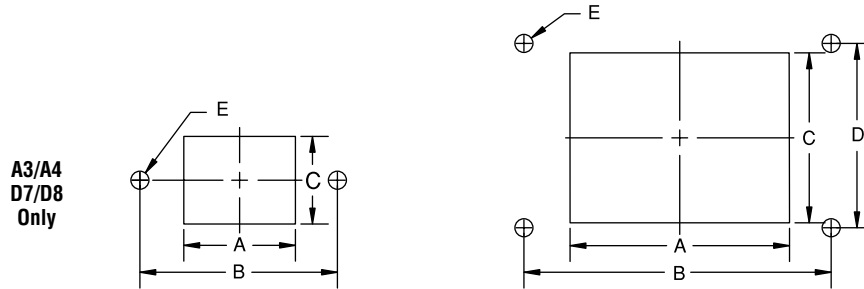


INSERT SERIES	CAT. NO.	DIMENSIONS ARE IN INCHES / (MILLIMETERS)							
		A	B	C	D	E	F	G	H
B6	FS106WAL	1.73 / (44)	2.01 / (51)	1.03 / (26.3)	1.06 / (27)	1.34 / (34)	1.77 / (45)	2.28 / (58)	3.54 / (90)
	FS106WAR								
	MS206WAL								
	MS206WAR								
B10	FS110WAL	2.13 / (54)	2.52 / (64)	1.55 / (39.5)	1.06 / (27)	1.34 / (34)	1.77 / (45)	2.28 / (58)	3.54 / (90)
	FS110WAR								
	MS210WAL								
	MS210WAR								
B16	FS116WAL	3.05 / (77.5)	3.32 / (84.5)	2.33 / (59.3)	1.06 / (27)	1.34 / (34)	1.77 / (45)	2.28 / (58)	3.54 / (90)
	FS116WAR								
	MS216WAL								
	MS216WAR								
B24	FS124WAL	4.09 / (104)	4.37 / (111)	3.36 / (85.7)	1.06 / (27)	1.34 / (34)	1.77 / (45)	2.28 / (58)	3.54 / (90)
	FS124WAR								
	MS224WAL								
	MS224WAR								
D40	FS340WAL	3.05 / (77.5)	3.27 / (83)	2.21 / (56)	1.06 / (27)	1.34 / (34)	3.19 / (81)	4.53 / (115)	5.12 / (130)
	MS440WAL								
D64	FS364WAL	4.09 / (104)	4.33 / (110)	3.39 / (86.3)	1.06 / (27)	1.34 / (34)	3.19 / (81)	4.53 / (115)	5.12 / (130)
	MS464WAL								

(-WAL) - GROUND LEFT

(-WAR) - GROUND RIGHT

Panel Cut Out Dimensions for Panel Bases



HOUSING SERIES					DIMENSIONS ARE IN INCHES / (MILLIMETERS)				
A, B, T, K	C, V	D	DD	M	A	B	C	D	E
A3, A4		D7, D8			0.83 / (21)	1.18 / (30)	0.83 / (21)	–	0.125 / (3.2)
A10		D15			1.71 / (43.5)	2.76 / (70)	0.95 / (24)	0.68 / (17.5)	0.134 / (3.4)
A16		D25			2.36 / (60)	3.39 / (86)	0.95 / (24)	0.68 / (17.5)	0.134 / (3.4)
A32		D50			2.36 / (60)	3.62 / (92)	1.89 / (48)	1.65 / (28)	0.177 / (4.5)
B6, T6			DD24	M2	1.42 / (36)	2.76 / (70)	1.38 / (35)	1.26 / (32)	0.177 / (4.5)
B10, T10	V3		DD42	M3	1.93 / (49)	3.27 / (83)	1.38 / (35)	1.26 / (32)	0.177 / (4.5)
B16, T16	C6, V6	D40	DD72	M5	2.84 / (72)	4.06 / (103)	1.38 / (35)	1.26 / (32)	0.177 / (4.5)
B24, T24, K12	V10, V16	D64	DD108	M7	3.86 / (98)	5.12 / (130)	1.38 / (35)	1.26 / (32)	0.177 / (4.5)
B32	C12	D80	DD144		2.84 / (72)	4.33 / (110)	2.80 / (71)	2.56 / (65)	0.216 / (5.5)
B48, K24	V20, V26, V32	D128	DD216		3.86 / (98)	5.83 / (148)	2.80 / (71)	2.76 / (70)	0.248 / (6.3)

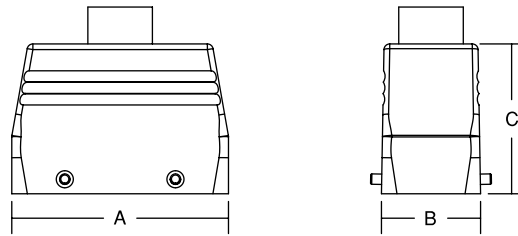
* Dimensions reflect dual inserts mounting.

Pos-E-Kon™

Pos-E-Kon™

Dimensions

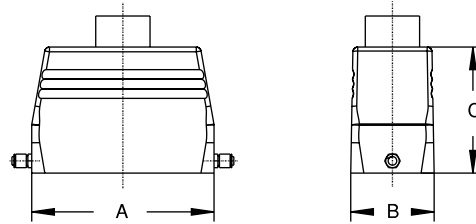
Mounting Dimensions for Double Post Hoods



HOUSING SERIES					CAT. NO.	DIMENSIONS ARE IN INCHES / (MILLIMETERS)		
A, B, T, K	C, V	D	DD	M		A	B	C
A32		D50			SH_32A	3.23 / (82)	2.21 / (56)	2.99 / (76)
					TH_32A	3.23 / (82)	2.21 / (56)	2.99 / (76)
B10, T10	V3		DD42	M3	SH_10	2.87 / (73)	1.69 / (43)	2.05 / (52)
					SH_10H__	2.87 / (73)	1.69 / (43)	2.05 / (52)
					TH_10	2.87 / (73)	1.69 / (43)	2.05 / (52)
					TH_10H__	2.87 / (73)	1.69 / (43)	2.05 / (52)
B16, T16	C6, V6	D40	DD72	M5	SH_16	3.70 / (94)	1.69 / (43)	2.56 / (65)
					SH_16H	3.70 / (94)	1.69 / (43)	2.99 / (76)
					SH_16L	3.70 / (94)	1.69 / (43)	2.36 / (60)
					TH_16	3.70 / (94)	1.69 / (43)	2.56 / (65)
					TH_16H	3.70 / (94)	1.69 / (43)	2.99 / (76)
					TH_16L	3.70 / (94)	1.69 / (43)	2.36 / (60)
B24, T24, K12	V10, V16	D64	DD108	M7	SH_24	4.72 / (120)	1.69 / (43)	2.36 / (60)
					SH_24H	4.72 / (120)	1.69 / (43)	2.99 / (76)
					TH_24	4.72 / (120)	1.69 / (43)	2.21 / (56)
					TH_24H	4.72 / (120)	1.69 / (43)	2.99 / (76)
					TH424RC	4.72 / (120)	1.69 / (43)	2.99 / (76)
B32	C12	D80	DD144		SH_32	3.70 / (94)	3.11 / (79)	3.15 / (80)
					TH_32	3.70 / (94)	3.11 / (79)	3.15 / (80)

► SUFFIX: A - ALUMINUM, AP - PLASTIC, H - HIGH PROFILE, L - LOW PROFILE, RC - RIBBON CABLE (TOP ENTRY ONLY)

Mounting Dimensions for Single Post Hoods



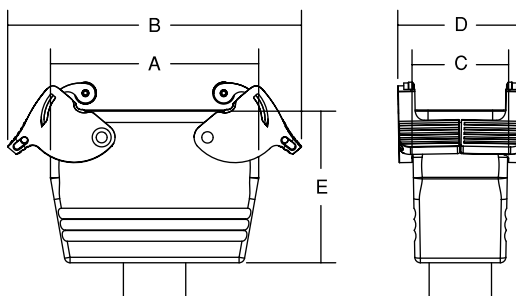
HOUSING SERIES					CAT. NO.	DIMENSIONS ARE IN INCHES / (MILLIMETERS)		
A, B, T, K	C, V	D	DD	M		A	B	C
A3, A4		D7, D8			SH603A(P)▶	1.04 / (26.5)	1.04 / (26.5)	1.89 / (48)
					TH803A(P)▶	1.04 / (26.5)	1.04 / (36.5)	1.89 / (48)
A10		D15			SH_10A	2.48 / (63)	1.42 / (36)	2.60 / (66)
					SH_10AL	2.48 / (63)	1.16 / (29.5)	2.09 / (53)
					TH_10A	2.48 / (63)	1.42 / (36)	2.60 / (66)
					TH_10AL	2.48 / (63)	1.16 / (29.5)	2.09 / (53)
A16		D25			SH_16A	3.13 / (79.5)	1.42 / (36)	2.84 / (72)
					SH_16AL	3.13 / (79.5)	1.16 / (29.5)	2.28 / (58)
					TH_16A	3.13 / (79.5)	1.42 / (36)	2.84 / (72)
					TH_16AL	3.13 / (79.5)	1.16 / (29.5)	2.28 / (58)
B6, T6			DD24	M2	SH_606	2.36 / (60)	1.69 / (43)	1.69 / (43)
					SH_606Hxxx	2.36 / (60)	1.69 / (43)	2.84 / (72)
					TH_806	2.36 / (60)	1.69 / (43)	1.69 / (43)
					TH_806Hxxx	2.36 / (60)	1.69 / (43)	2.84 / (72)
B10, T10	V3		DD42	M3	SH_610	2.87 / (73)	1.69 / (43)	2.05 / (52)
					SH_610Hxxx	2.87 / (73)	1.69 / (43)	2.84 / (72)
					TH_810	2.87 / (73)	1.69 / (43)	2.05 / (52)
					TH_810Hxxx	2.87 / (73)	1.69 / (43)	2.84 / (72)
B16, T16	C6, V6	D40	DD72	M5	SH_616	3.70 / (94)	1.69 / (43)	2.56 / (65)
					SH_616H	3.70 / (94)	1.69 / (43)	2.99 / (76)
					SH_616L	3.70 / (94)	1.69 / (43)	2.36 / (60)
					TH_816	3.70 / (94)	1.69 / (43)	2.56 / (65)
					TH_816H	3.70 / (94)	1.69 / (43)	2.99 / (76)
					TH_816L	3.70 / (94)	1.69 / (43)	2.36 / (60)
B24, T24 K12	V10, V16	D64	DD108	M7	TH816RC	3.70 / (94)	1.69 / (43)	2.99 / (76)
					SH_624	4.72 / (120)	1.69 / (43)	2.99 / (76)
					SH_624L	4.72 / (120)	1.69 / (43)	2.36 / (60)
					TH_824	4.72 / (120)	1.69 / (43)	2.99 / (76)
					TH824L	4.72 / (120)	1.69 / (43)	2.36 / (60)
B48, K24	V20, V26, V32	D128	DD216		TH624RC	4.72 / (120)	1.69 / (43)	2.99 / (76)
					SH_48	5.16 / (131.5)	3.50 / (89)	3.78 / (96)
					TH_48	5.16 / (131.5)	3.50 / (89)	3.78 / (96)

▶ SUFFIX: AP - PLASTIC, H - HIGH PROFILE, L - LOW PROFILE, RC - RIBBON CABLE (TOP ENTRY ONLY)

Pos-E-Kon™

Dimensions

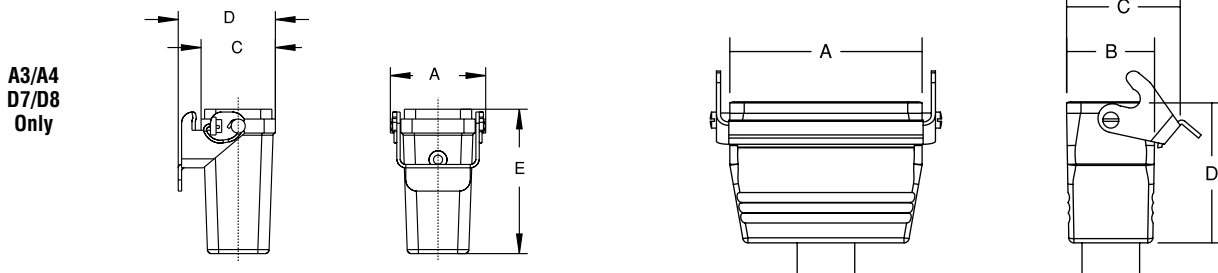
Mounting Dimensions for Double Lever Coupler Hoods



HOUSING SERIES					CAT. NO.	DIMENSIONS ARE IN INCHES / (MILLIMETERS)				
A, B, T, K	C, V	D	DD	M		A	B	C	D	E
B10, T10	V3		DD42	M3	CH610E	2.87 / (73)	4.33 / (110)	1.69 / (43)	2.28 / (58)	2.02 / (51.5)
					CH610EHxxx	2.87 / (73)	4.33 / (110)	1.69 / (43)	2.28 / (58)	2.87 / (73)
B16, T16	C6, V6	D40	DD72	M5	CH_16E	3.70 / (94)	5.16 / (131)	1.69 / (43)	2.28 / (58)	2.72 / (69)
					CH_16EH	3.70 / (94)	5.16 / (131)	1.69 / (43)	2.28 / (58)	3.15 / (80)
					CH616ERC	3.70 / (94)	5.16 / (131)	1.69 / (43)	2.28 / (58)	3.15 / (80)
B24, T24, K12	V10, V16	D64	DD108	M7	CH_24E	4.72 / (120)	6.18 / (157)	1.69 / (43)	2.28 / (58)	3.15 / (80)
					CH624ERC	4.72 / (120)	6.18 / (157)	1.69 / (43)	2.28 / (58)	3.15 / (80)
B32	C12	D80	DD144		CH_32E	3.70 / (94)	5.28 / (134)	3.11 / (79)	3.62 / (92)	3.23 / (82)

H - HIGH PROFILE, RC - RIBBON CABLE (TOP ENTRY)

Mounting Dimensions for Single Lever Coupler Hoods

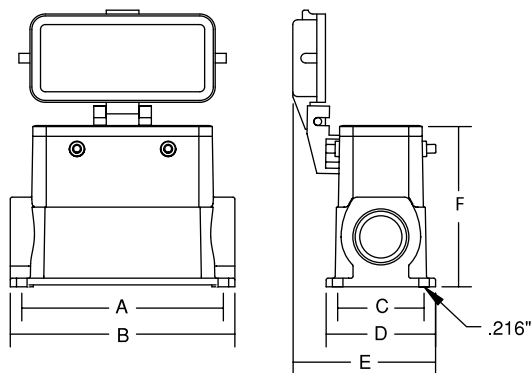


A3/A4
D7/D8
Only

HOUSING SERIES					CAT. NO.	DIMENSIONS ARE IN INCHES / (MILLIMETERS)				
A, B, T, K	C, V	D	DD	M		A	B	C	D	E
A3, A4		D7, D8			CH803A(P)▶	1.34 / (34)	-	1.04 / (26.5)	1.43 / (36.5)	2.02 / (51.5)
A10		D15			CH810A	2.48 / (63)	-	1.16 / (29.5)	1.92 / (49)	1.89 / (48)
A16		D25			CH816A	3.13 / (79.5)	-	1.16 / (29.5)	1.92 / (49)	2.09 / (53)
B6, T6			DD24	M2	CH806	2.36 / (60)	-	1.69 / (43)	2.56 / (65)	2.02 / (51.5)
					CH806Hxxx	2.36 / (60)	-	1.69 / (43)	2.56 / (65)	2.87 / (73)
B10, T10	V3		DD42	M3	CH810	2.87 / (73)	-	1.69 / (43)	2.64 / (67)	2.02 / (51.5)
					CH810Hxxx	2.87 / (73)	-	1.69 / (43)	2.64 / (67)	2.87 / (73)
B16, T16	C6, V6	D40	DD72	M5	CH_16	3.70 / (94)	-	1.69 / (43)	2.64 / (67)	2.72 / (69)
					CH_16H	3.70 / (94)	-	1.69 / (43)	2.64 / (67)	3.15 / (80)
					CH616RC	3.70 / (94)	-	1.69 / (43)	2.64 / (67)	3.15 / (80)
B24, T24, K12	V10, V16	D64	DD108	M7	CH_24	4.72 / (120)	-	1.69 / (43)	2.64 / (67)	3.15 / (80)
					CH824RC	4.72 / (120)	-	1.69 / (43)	2.64 / (67)	3.15 / (80)

▶ SUFFIX: A - ALUMINUM, AP - PLASTIC, H - HIGH PROFILE, L - LOW PROFILE, RC - RIBBON CABLE (TOP ENTRY ONLY)

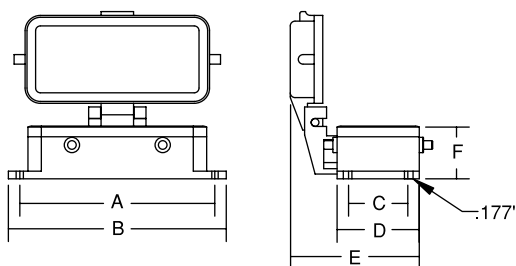
Mounting Dimensions for Double Post Box Bases (Reverse Locking)



HOUSING SERIES					CAT. NO.	DIMENSIONS ARE IN INCHES / (MILLIMETERS)					
A, B, T, K	C, V	D	DD	M		A	B	C	D	E	F
A32		D50			BB_32A	3.70 / (94)	4.17 / (106)	1.81 / (46)	2.32 / (59)	3.11 / (79)	3.20 / (81.5)
					BB_32A100	3.70 / (94)	4.17 / (106)	1.81 / (46)	2.32 / (59)	3.11 / (79)	3.20 / (81.5)
B10, T10	V3		DD42	M3	BB_10	3.23 / (82)	3.66 / (93)	1.56 / (40)	2.05 / (52)	2.87 / (73)	2.05 / (52)
					BB_10H	3.23 / (82)	3.66 / (93)	1.77 / (45)	2.24 / (57)	2.97 / (75.5)	2.91 / (74)
B16, T16	C6, V6	D40	DD72	M5	BB_16	4.13 / (105)	4.61 / (117)	1.77 / (45)	2.24 / (57)	2.97 / (75.5)	2.68 / (68)
					BB_16H	4.13 / (105)	4.61 / (117)	1.77 / (45)	2.24 / (57)	2.97 / (75.5)	3.31 / (84)
B24, T24, K12	V10, V16	D64	DD108	M7	BB_24	5.20 / (132)	5.67 / (144)	1.77 / (45)	2.24 / (57)	2.97 / (75.5)	2.68 / (68)
					BB_24H	5.20 / (132)	5.67 / (144)	1.77 / (45)	2.24 / (57)	2.97 / (75.5)	3.31 / (84)

H - HIGH PROFILE

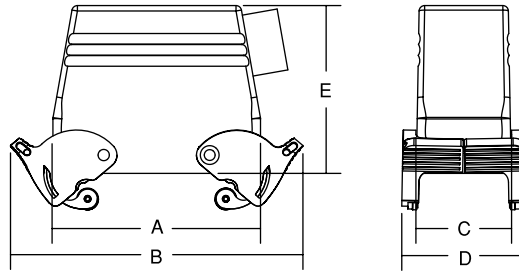
Mounting Dimensions for Double Post Panel Bases (Reverse Locking)



HOUSING SERIES					CAT. NO.	DIMENSIONS ARE IN INCHES / (MILLIMETERS)					
A, B, T, K	C, V	D	DD	M		A	B	C	D	E	F
A32		D50			PB232A	3.62 / (92)	4.02 / (102)	1.65 / (42)	2.24 / (57)	3.15 / (80)	1.10 / (28)
B10, T10	V3		DD42	M3	PB210	3.27 / (83)	3.66 / (93)	1.26 / (32)	1.69 / (43)	2.68 / (68.5)	1.06 / (27)
B16, T16	C6, V6	D40	DD72	M5	PB216	4.06 / (103)	4.49 / (114)	1.26 / (32)	1.69 / (43)	2.68 / (68.5)	1.06 / (27)
B24, T24, K12	V10, V16	D64	DD108	M7	PB224	5.12 / (130)	5.51 / (140)	1.26 / (32)	1.69 / (43)	2.68 / (68.5)	1.06 / (27)

Dimensions

Mounting Dimensions for Double Lever Hoops (Reverse Locking)



HOUSING SERIES					CAT. NO.	DIMENSIONS ARE IN INCHES / (MILLIMETERS)				
A, B, T, K	C, V	D	DD	M		A	B	C	D	E
A32		D50			LH_32A	3.23 / (82)	5.04 / (128)	2.21 / (56)	2.76 / (70)	2.99 / (76)
B10, T10	V3		DD42	M3	LH_10E	2.87 / (73)	4.33 / (110)	1.69 / (43)	2.28 / (58)	1.89 / (48)
					LH_10EH	2.87 / (73)	4.33 / (110)	1.69 / (43)	2.28 / (58)	2.84 / (72)
B16, T16	C6, V6	D40	DD72	M5	LH_16E	3.70 / (94)	5.16 / (131)	1.69 / (43)	2.28 / (58)	2.56 / (65)
					LH_16EH	3.70 / (94)	5.16 / (131)	1.69 / (43)	2.28 / (58)	2.99 / (76)
B24, T24, K12	V10, V16	D64	DD108	M7	LH_24E	4.72 / (120)	6.18 / (157)	1.69 / (43)	2.28 / (58)	2.99 / (76)

H - HIGH PROFILE

Dust Covers for Housings



HOUSING SERIES					FOR SINGLE LEVER HOUSINGS	FOR DOUBLE LEVER HOUSINGS	FOR SINGLE POST HOUSINGS	FOR DOUBLE POST HOUSINGS
A, B, T, K	C, V	D	DD	M				
A3, A4		D7, D8			DCL103A-1			
A10		D15			DCL110A-1		DCS110A-1	
A16		D25			DCL116A-1		DCS116A-1	
A32		D50				DCL232A-1/DCL432A-1*		DCS232A-1
B6, T6 □			DD24	M2	DCL106B-1			
B10, T10 □	V3		DD42	M3	DCL110B-1	DCL210B-1/DCL410B-1*		
B16, T16 □	C6, V6	D40	DD72	M5	DCL116B-1	DCL216B-1/DCL416B-1*		
B24, T24 □, K12	V10, V16	D64	DD108	M7	DCL124B-1	DCL224B-1/DCL424B-1*		

* COMES WITH GASKET FOR NON-GASKETED HOODS W/LEVERS

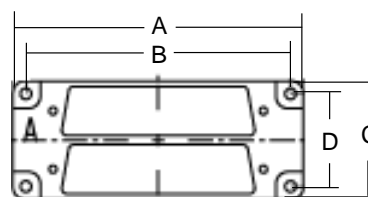
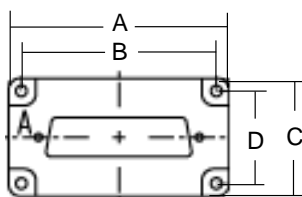
□ DUST COVERS TESTED ONLY TO 125°C

Sub-Miniature Adapter Plate Selection Guide

HOUSING SERIES					SUB-MINIATURE CONNECTOR				
A, B, T, K	C, V	D	DD	M	DB9	DB15	DB25	DB37	DB50
A3, A4		D7, D8			NO ADAPTER FOR THIS SERIES				
A10		D15			AP681A10	AP677A10	AP678A10		
A16		D25						AP682A16	AP683A16
A32		D50							
B6, T6	DD24	M2			AP796B6	AP797B6			
					AP802B6*	AP803B6*			
B10, T10	V3		DD42	M3			AP798B10		
							AP804B10*		
B16, T16	C6, V6	D40	DD72	M5				AP799B16	AP800B16
								AP805B16*	AP806B16*
B24, T24, K12	V10, V16	D64	DD108	M7				N/A	
B32	C12	D80	DD144					N/A	
B48, K24	V20, V26, V32	D128	DD216					N/A	

* DUAL MOUNTING

Sub-Miniature Adapter Plate Mounting Dimensions



* DUAL MOUNTING

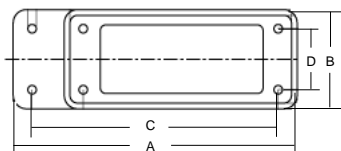
CAT. NO.	DIMENSIONS ARE IN INCHES / (MILLIMETERS)			
	A	B	C	D
AP677A10	2.22 / (56.5)	0.91 / (23)	1.95 / (49.5)	0.63 / (16)
AP678A10	2.22 / (56.5)	0.91 / (23)	1.95 / (49.5)	0.63 / (16)
AP681A10	2.22 / (56.5)	0.91 / (23)	1.95 / (49.5)	0.63 / (16)
AP682A16	2.87 / (73)	0.91 / (23)	2.60 / (66)	0.63 / (16)
AP683A16	2.87 / (73)	0.91 / (23)	2.60 / (66)	0.63 / (16)
AP796B6	2.03 / (51.5)	1.73 / (44)	1.36 / (34.5)	1.06 / (27)
AP797B6	2.03 / (51.5)	1.73 / (44)	1.36 / (34.5)	1.06 / (27)
AP798B10	2.54 / (64.5)	2.24 / (57)	1.36 / (34.5)	1.06 / (27)
AP799B16	3.35 / (85)	3.05 / (77.5)	1.36 / (34.5)	1.06 / (27)
AP800B16	3.35 / (85)	3.05 / (77.5)	1.36 / (34.5)	1.06 / (27)
AP802B6*	2.03 / (51.5)	1.73 / (44)	1.36 / (34.5)	1.06 / (27)
AP803B6*	2.03 / (51.5)	1.73 / (44)	1.36 / (34.5)	1.06 / (27)
AP804B10*	2.54 / (64.5)	2.24 / (57)	1.36 / (34.5)	1.06 / (27)
AP805B16*	3.35 / (85)	3.05 / (77.5)	1.36 / (34.5)	1.06 / (27)
AP806B16*	3.35 / (85)	3.05 / (77.5)	1.36 / (34.5)	1.06 / (27)

* DUAL MOUNTING

Pos-E-Kon™

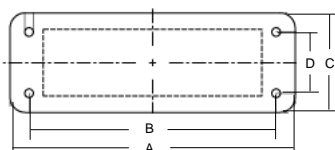
Dimensions

Size Adapter Plate: Selection Guide for Panel Installation



NOTE: ADAPTER PLATES ARE FOR USE WITH PANEL BASES IN SERIES B24, D64, DD108, M7, V10, AND V16	ADAPTER SIZE	CAT. NO.	DIMENSIONS ARE IN INCHES / (MILLIMETERS)			
			A	B	C	D
	B24 to B6	AP650B6	5.90 / (150)	2.05 / (52)	5.12 / (130)	1.26 / (32)
	B24 to B10	AP651B10	5.90 / (150)	2.05 / (52)	5.12 / (130)	1.26 / (32)
	B24 to B16	AP652B16	5.90 / (150)	2.05 / (52)	5.12 / (130)	1.26 / (32)

Cover Plate Selection Guide



HOUSING SERIES					CAT. NO.	DIMENSIONS ARE IN INCHES / (MILLIMETERS)			
A, B, T, K	C, V	D	DD	M		A	B	C	D
A3, A4		D7, D8							
A10		D15			CP684A10	3.43 / (87)	2.76 / (70)	1.57 / (40)	0.69 / (17.5)
A16		D25			CP685A16	3.94 / (100)	3.39 / (86)	1.77 / (45)	0.69 / (17.5)
B6, T6			DD24	M2	CP638B6	3.39 / (86)	2.76 / (70)	2.05 / (52)	1.26 / (32)
B10, T10	V3		DD42	M3	CP639B10	4.02 / (102)	3.27 / (83)	2.05 / (52)	1.26 / (32)
B16, T16	C6, V6	D40	DD72	M5	CP640B16	4.84 / (123)	4.06 / (103)	2.05 / (52)	1.26 / (32)
B24, T24, K12	V10, V16	D64	DD108	M7	CP641B24	5.91 / (150)	5.12 / (130)	2.05 / (52)	1.26 / (32)

NOTE: COVER PLATES ARE FOR USE ON PANEL BASES ONLY

Gaskets

HOUSING SERIES					CAT. NOS.	
A, B, T, K	C, V	D	DD	M	PANEL BASE, FLAT	*MOLDED EDGE CONTOUR
A3, A4		D7, D8			A04XFGP	A04XMEC
A10		D15			A10VFGP	A10XMEC
A16		D25			A16XFGP	A16XMEC
A32		D50			A32XFGP	A32XMEC
B6, T6 □			DD24	M2	B6XFGP	B6XMEC
B10, T10 □	V3		DD42	M3	B10XFGP	B10XMEC
B16, T16 □	V6, C6	D40	DD72	M5	B16XFGP	B16XMEC
B24, T24 □, K12	V10, V16	D64	DD108	M7	B24XFGP	B24XMEC
B32	C12	D80	DD144		B32XFGP	B32XMEC
B48, K24	V20, V26, V32	D128	DD216		B48XFGP	B48XMEC

* INSTALL WITH SILICONE SEALANT/ADHESIVE FOR INDUSTRIAL USE.

□ FOR T SERIES 200°C APPLICATIONS, CHANGE PREFIX IN CATALOGUE NUMBER FROM B TO T. EX: "T16XFGP" FOR PANEL BASE GASKETS.