



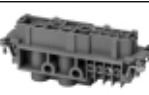
Pos-E-Kon™

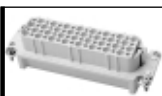


Pos-E-Kon Insert Selector Chart

















- S — Screw Terminals
- C — Crimp Contacts
- F — Fiber Optic (POF)
- A — Terminal Block Wiring Adapter

Select the number of contacts – All inserts have separate ground contacts

AMPS	VOLTS	Series	3	4	6	7	8	10	12	15	16	20	24	25	26	32	40	42	48	50-216
10	50	D					C, F													
10	600	A	S	S																
16	600	A						S, C			S, C					S, C				
16	600	B			S, C, A			S, C, A			S, C, A		S, C, A			S, C			S, C	
35	600	C			S				S											
10	600	D					C, F			C, F							C, F, A			C, F, A (64)
10	600	DD											C, F					C, F		C, F
80/16	600	K		S			S	Combination Inserts: 4 power (80A) + 8 control (16A), 8 power (80A) + 16 control (16A).												
16-T	600	T			S			S			S		S			High Temp (200°C)				
16-V	600	V	S, C		S, C			S, C			S, C	S, C			S, C	S, C	Includes 2 Pilot Contacts			
Modular 600		M	Configure to individual specs. Options: Fiber Optic, Power and Control Pin selections in sectional inserts. Contact Tech Service for Information.																	

Screw Terminal / Insert Types (Integral Contacts)	10 - 16A A, B, V, T	35A C	16 - 80A K
Screw termination is used for ease of assembly, some heavier gauge wires plus ease of maintenance. No tooling beyond a screwdriver and wire strippers is required.			

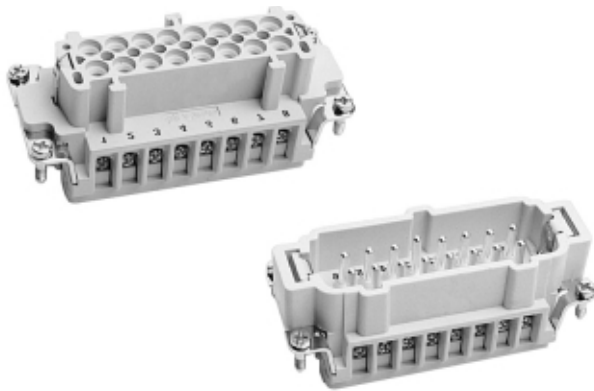
Crimp Terminal / Insert Types (Crimp Contacts)	10A D & DD	16A A & B	5-50A M
Crimp terminals offer solid, thermally cool, vibration resistant terminations for OEM equipment and critical applications. Better for smaller AWG sizes also. Crimp tools are noted in each section.			

16A A & B	10A D & DD	POF D & M	Signal 1.5 A M-Coax	50 Amp M3	16 Amp M 4/5	20 Amp M5	5 Amp M20
							
							

- All crimp types represented require contacts ordered separately.
- Each section contains hand crimp tool selection notes.

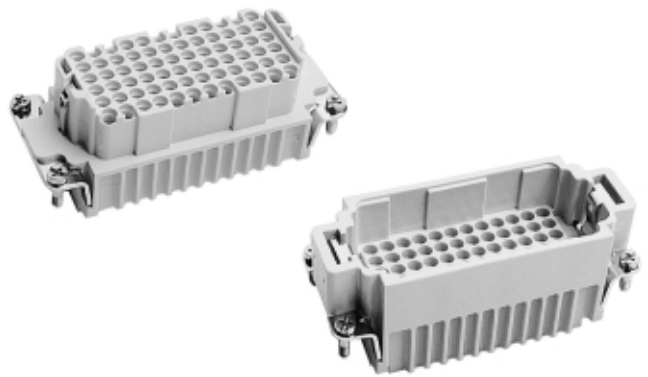
NEW Thermocouple compensated contacts (crimp) also available (Fe and Cu) for A & B series inserts. Contact your Thomas & Betts Regional Sales Office. See back cover for contact information.

Screw Terminal Inserts



- Integral screw terminal contacts provide for easy terminal wiring, fast assembly.
- Standard wire protection saddles prevent cutting of strands during assembly.

Crimp Terminal Inserts



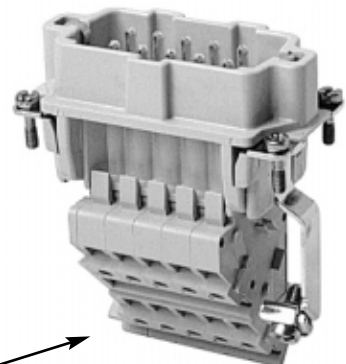
- Provides reliable connections for long-term configurations.
- Contact sizes accommodate wiring from 12 - 20 AWG.

- Made of durable glass fiber-filled thermoplastic.
- Contact numbers clearly marked for easy identification.
- Easily installed (male or female) in either hoods or bases using captive mounting screws.

Terminal Block Wiring Adapters

WAR, Right Ground Strap
WAL, Left Ground Strap

- Allow for measuring of circuit while in operation.
- Provide easy connections in panel mounting configurations.
- Labels available for easy identification of circuits.
- Can be mounted on DIN rails by using snap-on mount feet.
- Used in switch cabinets, panel enclosures or mounted in panel base housings – **see B and D series.**

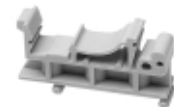


WAM1 Marker Tab Clips

Snap-in formed label holder tabs allow terminal identification for **B Series**.

WAM2 Marker Tab Clips

Snap-in formed label holder tabs allow terminal identification for **D Series**.



DIN Mounting Foot **FE807TB**

WAM1 – Insert Strip Blank – WAM1B
Insert Strip Nos. 1-64 – WAM1N64
Insert Strip Letters A-Z – WAM1AZ

WAM2 – Insert Strip Blank – WAM2B
Insert Strip Nos. 1-64 – WAM2N64
Insert Strip Letters A-Z – WAM2AZ

Pos-E-Kon™

Hood and Base Housings

- **Rugged cast aluminum hoods and bases:** Maximum performance in many operating conditions.
- **Various hood heights available:** Easier assembly and wiring with low, high and standard profiles.
- **Corrosion resistant finishes:** Optional special materials extend life in corrosive conditions.
- Locking possibilities include **single locking** system and **double locking** system.
- **Complete selection:** Flexible product designs (see Hood/Base Size Cross Reference Chart below).
- **Dust Covers and More:** See Adapters, pp. 9-10 and Covers p. 10 (or Bases w/Covers) available in most series (Accessories p. 66) see pp. 67-68 for all Adapter Plates.
- **Custom Configurations:** Multiple conduit entry/sizes and other configurations available to spec.

Cross Reference

Applications			Standard Hood/Base Housings									
AMPS	VOLTS	Series	A4	A10	A16	A32	B6	B10	B16	B24	B32	B48
10A	50	D	D8									
10A	600	A	A3, A4									
16A	600	A		A10	A16	A32						
16A	600	B					B6	B10	B16	B24	B32	B48
35A	600	C							C6		C12	
10A	600	D	D7	D15	D25	D50			D40	D64	D80	D128
10A	600	DD					DD24	DD42	DD72	DD108	DD144	DD216
80/16A	600	K								K4/8		K8/16
ModularM	600	M					M, B6	M, B10	M, B16	M, B24	M, B16	M, B24

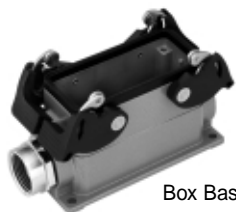
I
N
S
E
R
T
S

Applications			Special Series Hood/Base Housings									
16A-T*	600	T					T6	T10	T16	T24		
16A-V*	600	V						V3	V6	V10		V32

* Special isolation design allows additional control circuit capability.

▪ Special high temperature series in Cu-Free Aluminum with special green epoxy powder-coat, Viton® seals.†

† Viton is a trademark of DuPont Dow Elastomers.



Box Base

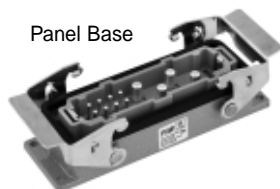


Top Cable Entry



Box Base Housing w/Single lever and spring cover.

New: metal spring covers now available for B series, where noted.



Panel Base

Side Cable Entry



Using the Catalogue: Series layout

1. For each series, select size (number of contacts) from the chart on the left hand page (selected inserts), then look at corresponding right hand page columns.
2. Vertical columns note single or double locking systems available (double locking usually preferable).
3. Select base housings for mounting and/or function: conduit/cable entry, through-panel access, in-line coupler or reversed locking as shown (note profile height options).
4. Select side or top entry hoods as shown (note profile height options).
5. Review conduit and cable entry options (standard NPT adapter sizes for each series).

Note: M Series (layout) groups interior options, followed by base selection options.

