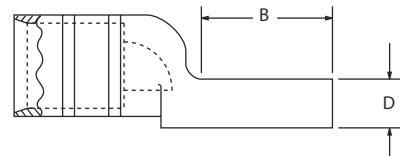
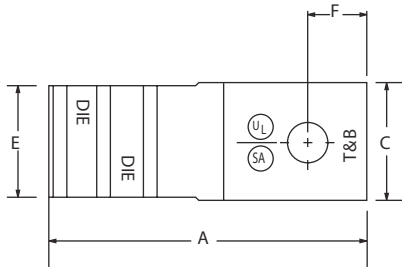
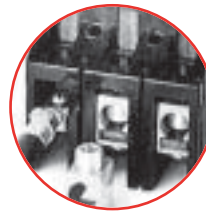


Connectors for Aluminum Code Conductors

Much smaller than standard aluminum lugs for the same cable size.

One-Hole Aluminum Compact-Size Equipment Lug

- For 90°C, certified 600V applications
- For use with aluminum cables only
- Can be directly substituted for equipment mechanical lugs in most applications
- Only 7 dies handle all 14 lug sizes
- Factory-filled with joint compound
- Electro-tin plated
- Supplied with Neoprene insulating covers



CAT. NO.	Aluminum Cable Size	Aluminum Range Taking*	Bolt Hole (in.)	Dimensions in. (mm)					
				A	B	C	D	E	F
61102	#8	—	1/4	1.33 (33.8)	0.54 (13.7)	0.50 (12.7)	0.14 (3.6)	0.37 (9.4)	0.25 (6.4)
61107	#6	—	1/4	1.33 (33.8)	0.54 (13.7)	0.50 (12.7)	0.14 (3.6)	0.37 (9.4)	0.25 (6.4)
61112	#4	—	1/4	1.33 (33.8)	0.54 (13.7)	0.50 (12.7)	0.14 (3.6)	0.37 (9.4)	0.25 (6.4)
61116	#2	—	1/4	1.75 (44.5)	0.68 (17.3)	0.55 (14.0)	0.20 (5.1)	0.48 (12.2)	0.25 (6.4)
61122	#1	—	1/4	1.75 (44.5)	0.68 (17.3)	0.55 (14.0)	0.20 (5.1)	0.48 (12.2)	0.25 (6.4)
61130	1/0	#8-1/0	3/8	2.00 (50.8)	0.83 (21.1)	0.64 (16.3)	0.20 (5.1)	0.57 (14.5)	0.38 (9.7)
61136	2/0	#1-2/0	3/8	2.00 (50.8)	0.83 (21.1)	0.64 (16.3)	0.20 (5.1)	0.57 (14.5)	0.38 (9.7)
61142	3/0	—	3/8	2.50 (63.5)	1.08 (27.4)	0.78 (19.8)	0.23 (5.8)	0.70 (17.8)	0.38 (9.7)
61148	4/0	2/0-4/0	3/8	2.50 (63.5)	1.08 (27.4)	0.78 (19.8)	0.23 (5.8)	0.70 (17.8)	0.38 (9.7)
61156	250 kcmil	—	1/2	2.50 (63.5)	1.23 (31.2)	0.98 (24.9)	0.25 (6.4)	0.85 (21.6)	0.50 (12.7)
61162	300 kcmil	#4-300	1/2	2.50 (63.5)	1.23 (31.2)	0.98 (24.9)	0.25 (6.4)	0.85 (21.6)	0.50 (12.7)
61165	350 kcmil	250-350	1/2	3.25 (82.6)	1.23 (31.2)	1.20 (30.5)	0.41 (10.4)	1.04 (26.4)	0.56 (14.2)
61171	500 kcmil	2/0-500	1/2	3.25 (82.6)	1.23 (31.2)	1.20 (30.5)	0.41 (10.4)	1.04 (26.4)	0.56 (14.2)
61178	750 kcmil	500-750	5/8	3.75 (95.3)	1.54 (39.1)	1.49 (37.8)	0.41 (10.4)	1.33 (33.8)	0.81 (20.6)

*For range-taking capability, use TMB8-750/TBM8-750M-1 Smart® Tool.
Tooling: pp. 112-141 Die Selector Chart: pp. 142-149