

Connectors for Aluminum/Copper Code Conductors

Designed and approved for use with both aluminum and copper conductors



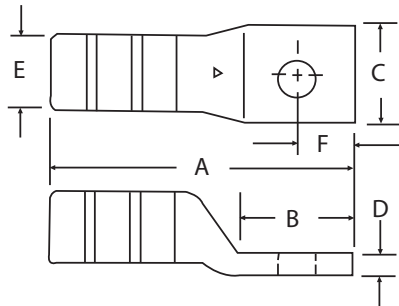
One-Hole Lugs

Compression



- For 90°C certified to 600V and recommended up to 35 kV* applications
- Easily matched to the correct Color-Keyed® installing die for positive compressions
- Hardened steel dies compress connector around cable, changing round strands to polygonal shapes and cold flowing strands and connector into a solid, homogenous mass
- Long compression areas ensure complete contact
- Multiple compressions prevent creep of aluminum conductors
- Filled with high-temperature oxide-inhibitor compound
- Electro-tin plating prevents electrolytic corrosion of copper to ensure lowest contact resistance

Material: High-Conductivity Wrought Aluminum
 Finish: Electro-Tin Plated



CAT. NO.	Cable Size AL/CU	Bolt Size (in.)	Dimensions in. (mm)						Die Code	Color Code
			A	B	C	D	E	F		
60096	#10	#10	1.09 (27.7)	0.56 (14.2)	0.41 (10.4)	0.06 (1.5)	0.27 (6.9)	0.22 (5.6)	21	Red
60097		1/4	1.31 (33.3)	0.72 (18.3)	0.43 (10.9)	0.07 (1.8)	0.27 (6.9)	0.34 (8.6)		
60099		3/8	1.53 (38.9)	0.93 (23.6)	0.58 (14.7)	0.06 (1.5)	0.27 (6.9)	0.44 (11.2)		
60101-TB	#8	#10	1.22 (31.0)	0.56 (14.2)	0.41 (10.4)	0.09 (2.3)	0.28 (7.1)	0.22 (5.6)	24	Blue
60102-TB		1/4	1.38 (35.1)	0.71 (18.0)	0.44 (11.2)	0.09 (2.3)	0.28 (7.1)	0.34 (8.6)		
60103-TB		5/16	1.56 (39.6)	0.91 (23.1)	0.60 (15.2)	0.06 (1.5)	0.28 (7.1)	0.44 (11.2)		
60104-TB	#6	3/8	1.60 (40.6)	0.93 (23.6)	0.60 (15.2)	0.06 (1.5)	0.28 (7.1)	0.44 (11.2)	29	Grey
60106-TB		#10	1.52 (38.6)	0.59 (15.0)	0.47 (11.9)	0.13 (3.3)	0.35 (8.9)	0.22 (5.6)		
60107-TB		1/4	1.67 (42.4)	0.75 (19.1)	0.47 (11.9)	0.13 (3.3)	0.35 (8.9)	0.34 (8.6)		
60108-TB	#4	5/16	1.83 (46.5)	0.91 (23.1)	0.63 (16.0)	0.09 (2.3)	0.35 (8.9)	0.44 (11.2)	37	Green
60109-TB		3/8	1.86 (47.2)	0.93 (23.6)	0.63 (16.0)	0.09 (2.3)	0.35 (8.9)	0.44 (11.2)		
60112-TB		5/16	2.00 (50.8)	0.91 (23.1)	0.64 (16.3)	0.19 (4.8)	0.46 (11.7)	0.44 (11.2)		
60114-TB	#2	3/8	2.03 (51.6)	0.93 (23.6)	0.64 (16.3)	0.19 (4.8)	0.46 (11.7)	0.44 (11.2)	42	Pink
60116-TB		1/4	1.91 (48.5)	0.75 (19.1)	0.72 (18.3)	0.19 (4.8)	0.51 (13.0)	0.34 (8.6)		
60117-TB		5/16	2.06 (52.3)	0.91 (23.1)	0.72 (18.3)	0.19 (4.8)	0.51 (13.0)	0.44 (11.2)		
60118-TB	#1	3/8	2.09 (53.1)	0.93 (23.6)	0.72 (18.3)	0.19 (4.8)	0.51 (13.0)	0.44 (11.2)	45	Gold
60120		1/2	2.25 (57.2)	1.41 (35.8)	0.88 (22.4)	0.19 (4.8)	0.51 (13.0)	0.69 (17.5)		
60122		1/4	2.30 (58.4)	0.81 (20.6)	0.75 (19.1)	0.19 (4.8)	0.56 (14.2)	0.34 (8.6)		
60123	1/0	5/16	2.39 (60.7)	0.91 (23.1)	0.75 (19.1)	0.19 (4.8)	0.56 (14.2)	0.44 (11.2)	50	Tan
60124		3/8	2.42 (61.5)	0.93 (23.6)	0.75 (19.1)	0.19 (4.8)	0.56 (14.2)	0.44 (11.2)		
60126		1/2	2.89 (73.4)	1.41 (35.8)	0.88 (22.4)	0.16 (4.1)	0.56 (14.2)	0.69 (17.5)		
60128	2/0	1/4	2.36 (59.9)	0.81 (20.6)	0.88 (22.4)	0.19 (4.8)	0.62 (15.7)	0.34 (8.6)	54	Olive
60129		5/16	2.51 (63.8)	0.97 (24.6)	0.88 (22.4)	0.19 (4.8)	0.62 (15.7)	0.44 (11.2)		
60130		3/8	2.51 (63.8)	0.97 (24.6)	0.88 (22.4)	0.19 (4.8)	0.62 (15.7)	0.44 (11.2)		
60132	3/0	1/2	2.95 (74.9)	1.41 (35.8)	0.94 (23.9)	0.19 (4.8)	0.62 (15.7)	0.69 (17.5)	60	Ruby
60134		1/4	2.48 (63.0)	0.87 (22.1)	0.97 (24.6)	0.22 (5.6)	0.70 (17.8)	0.34 (8.6)		
60135		5/16	2.64 (67.1)	1.03 (26.2)	0.97 (24.6)	0.22 (5.6)	0.70 (17.8)	0.44 (11.2)		
60136	4/0	3/8	2.64 (67.1)	1.03 (26.2)	0.97 (24.6)	0.22 (5.6)	0.70 (17.8)	0.44 (11.2)	66	White
60138		1/2	3.10 (78.7)	1.41 (35.8)	1.03 (26.2)	0.22 (5.6)	0.70 (17.8)	0.69 (17.5)		
60140		1/4	2.58 (65.5)	0.87 (22.1)	1.06 (26.9)	0.22 (5.6)	0.77 (19.6)	0.34 (8.6)		
60141	250 kcmil	5/16	2.83 (71.9)	1.09 (27.7)	1.06 (26.9)	0.22 (5.6)	0.77 (19.6)	0.44 (11.2)	71	Red
60142		3/8	2.83 (71.9)	1.09 (27.7)	1.06 (26.9)	0.22 (5.6)	0.77 (19.6)	0.44 (11.2)		
60144		1/2	3.15 (80.0)	1.41 (35.8)	1.06 (26.9)	0.22 (5.6)	0.77 (19.6)	0.69 (17.5)		
60147	300 kcmil	5/16	3.53 (89.7)	0.88 (22.4)	1.21 (30.7)	0.25 (6.4)	0.86 (21.8)	0.38 (9.7)	76	Blue
60148		3/8	3.59 (91.2)	0.93 (23.6)	1.21 (30.7)	0.25 (6.4)	0.86 (21.8)	0.38 (9.7)		
60150		1/2	3.90 (99.1)	1.25 (31.8)	1.21 (30.7)	0.25 (6.4)	0.86 (21.8)	0.50 (12.7)		
60151	350 kcmil	5/8	4.65 (118.1)	2.00 (50.8)	1.21 (30.7)	0.25 (6.4)	0.86 (21.8)	0.75 (19.0)	87	Brown
60154		3/8	3.73 (94.7)	0.93 (23.6)	1.29 (32.8)	0.27 (6.9)	0.92 (23.4)	0.38 (9.7)		
60155		1/2	4.05 (102.9)	1.25 (31.8)	1.29 (32.8)	0.27 (6.9)	0.92 (23.4)	0.50 (12.7)		
60157	400 kcmil	5/8	4.80 (121.9)	2.00 (50.8)	1.29 (32.8)	0.27 (6.9)	0.92 (23.4)	0.75 (19.0)	94	Green
60159		5/16	3.75 (95.3)	0.88 (22.4)	1.39 (35.3)	0.28 (7.1)	0.99 (25.1)	0.38 (9.7)		
60160		3/8	3.80 (96.5)	0.93 (23.6)	1.39 (35.3)	0.28 (7.1)	0.99 (25.1)	0.38 (9.7)		
60162	500 kcmil	1/2	4.13 (104.9)	1.25 (31.8)	1.39 (35.3)	0.28 (7.1)	0.99 (25.1)	0.50 (12.7)	99	Pink
60165		1/2	4.83 (122.7)	1.25 (31.8)	1.53 (38.9)	0.33 (8.4)	1.09 (27.7)	0.50 (12.7)		
60166		5/8	5.58 (141.7)	2.00 (50.8)	1.53 (38.9)	0.33 (8.4)	1.09 (27.7)	0.75 (19.0)		
60168	600 kcmil	1/2	4.95 (125.7)	1.25 (31.8)	1.65 (41.9)	0.38 (9.7)	1.18 (30.0)	0.50 (12.7)	106	Black
60171		1/2	4.95 (125.7)	1.25 (31.8)	1.79 (45.5)	0.38 (9.7)	1.28 (32.5)	0.50 (12.7)		
60172		5/8	5.70 (144.8)	2.00 (50.8)	1.79 (45.5)	0.38 (9.7)	1.28 (32.5)	0.75 (19.0)		
60174	700 kcmil	5/8	5.83 (148.1)	2.00 (50.8)	1.92 (48.8)	0.37 (9.4)	1.36 (34.5)	0.75 (19.0)	112	Purple
60176		5/8	5.95 (151.1)	2.00 (50.8)	2.04 (51.8)	0.38 (9.7)	1.44 (36.6)	0.75 (19.0)		
60178		5/8	6.03 (153.2)	2.00 (50.8)	2.13 (54.1)	0.40 (10.2)	1.50 (38.1)	0.75 (19.0)		
60184	1000 kcmil	5/8	6.78 (172.2)	2.00 (50.8)	2.50 (63.5)	0.50 (12.7)	1.77 (45.0)	0.75 (19.0)	140	N/A

Tooling: pp. 116-145 Die Selector Chart: pp. 146-153
 * For installations from 16 kV up to 35 kV, consult shielded cable manufacturers for stress relief and insulation requirements.

Connectors for Aluminum/Copper Code Conductors

Designed and approved for use with both aluminum and copper conductors



Two-Hole Lugs



- For 90°C certified to 600V and recommended up to 35 kV[‡] applications
- For aluminum and copper concentric conductors and compact code aluminum strandings
- Filled with oxide-inhibitor compound

Material: High-Conductivity Wrought Aluminum
 Finish: Electro-Tin Plated

CAT. NO.	Cable Size	Bolt Size (in.)	Dimensions in. (mm)							Die Code	Color Code
			A	B	C	D	E	F	G		
60230	1/0 AWG	3/8	3.50 (88.9)	1.90 (48.3)	0.88 (22.4)	0.19 (4.8)	0.62 (15.7)	0.38 (9.7)	1.00 (25.4)	50	Tan
60236	2/0 AWG	3/8	3.50 (88.9)	1.90 (48.3)	0.97 (24.6)	0.22 (5.6)	0.70 (17.8)	0.38 (9.7)	1.00 (25.4)	54	Olive
60238	2/0 AWG	1/2	5.03 (127.8)	3.41 (86.6)	0.97 (24.6)	0.22 (5.6)	0.70 (17.8)	0.75 (19.1)	1.75 (44.5)	60	Ruby
60242	3/0 AWG	3/8	3.66 (93.0)	1.18 (30.0)	1.06 (27.0)	0.22 (5.6)	0.77 (19.6)	0.38 (9.7)	1.00 (25.4)	66	White
60244	3/0 AWG	1/2	5.16 (131.1)	3.41 (86.6)	0.06 (1.5)	0.22 (5.6)	0.77 (19.6)	0.75 (19.1)	1.75 (44.5)	71	Red
60248	4/0 AWG	3/8	4.58 (116.3)	1.18 (30.0)	1.21 (30.7)	0.25 (6.4)	0.86 (21.8)	0.38 (9.7)	1.00 (25.4)	76	Blue
60250	4/0 AWG	1/2	5.65 (143.5)	3.41 (86.6)	1.21 (30.7)	0.25 (6.4)	0.86 (21.8)	0.50 (12.7)	1.75 (44.5)	87	Brown
60254	250 kcmil	3/8	4.73 (120.1)	1.93 (49.0)	1.29 (32.8)	0.27 (6.9)	0.92 (23.4)	0.38 (9.7)	1.00 (25.4)	94	Green
60256	250 kcmil	1/2	5.80 (147.3)	3.00 (76.2)	1.29 (32.8)	0.27 (6.9)	0.92 (23.4)	0.50 (12.7)	1.75 (44.5)	99	Pink
60260	300 kcmil	3/8	4.80 (121.9)	1.93 (49.0)	1.39 (35.3)	0.28 (7.1)	0.99 (25.1)	0.38 (9.7)	1.00 (25.4)	106	Black
60262	300 kcmil	1/2	5.88 (149.4)	3.00 (76.2)	1.39 (35.3)	0.28 (7.1)	0.99 (25.1)	0.50 (12.7)	1.75 (44.5)	112	Purple
60265	350 kcmil	3/8	5.50 (139.7)	1.93 (49.0)	1.53 (38.9)	0.33 (8.4)	1.09 (27.7)	0.38 (9.7)	1.00 (25.4)	115	Yellow
60267	350 kcmil	1/2	6.58 (167.1)	3.00 (76.2)	1.53 (38.9)	0.33 (8.4)	1.09 (27.7)	0.50 (12.7)	1.75 (44.5)	140	N/A
60268	400 kcmil	3/8	5.63 (143.0)	1.93 (49.0)	1.65 (41.9)	0.38 (9.7)	1.18 (30.0)	0.38 (9.7)	1.00 (25.4)		
60269	400 kcmil	1/2	6.70 (170.2)	3.00 (76.2)	1.65 (41.9)	0.38 (9.7)	1.18 (30.0)	0.50 (12.7)	1.75 (44.5)		
60271	500 kcmil	3/8	5.63 (143.0)	1.93 (49.0)	1.79 (45.5)	0.38 (9.7)	1.28 (32.5)	0.38 (9.7)	1.00 (25.4)		
60273	500 kcmil	1/2	6.70 (170.2)	3.00 (76.2)	1.79 (45.5)	0.38 (9.7)	1.28 (32.5)	0.50 (12.7)	1.75 (44.5)		
60274	600 kcmil	3/8	5.75 (143.1)	1.93 (49.0)	1.92 (48.8)	0.37 (9.4)	1.36 (34.5)	0.38 (9.7)	1.00 (25.4)		
60275	600 kcmil	1/2	6.83 (173.5)	3.00 (76.2)	1.92 (48.8)	0.37 (9.4)	1.36 (34.5)	0.50 (12.7)	1.75 (44.5)		
60276	700 kcmil	3/8	5.88 (149.4)	1.93 (49.0)	2.04 (51.8)	0.38 (9.7)	1.44 (36.6)	0.38 (9.7)	1.00 (25.4)		
60277	700 kcmil	1/2	6.95 (176.5)	3.00 (76.2)	2.04 (51.8)	0.38 (9.7)	1.44 (36.6)	0.50 (12.7)	1.75 (44.5)		
60278	750 kcmil	1/2	7.15 (181.6)	3.00 (76.2)	2.13 (54.1)	0.40 (10.2)	1.50 (38.1)	0.50 (12.7)	1.00 (25.4)		
60284	1000 kcmil	1/2	7.78 (197.6)	3.00 (76.2)	2.50 (63.5)	0.50 (12.7)	1.77 (45.0)	0.50 (12.7)	1.75 (44.5)		

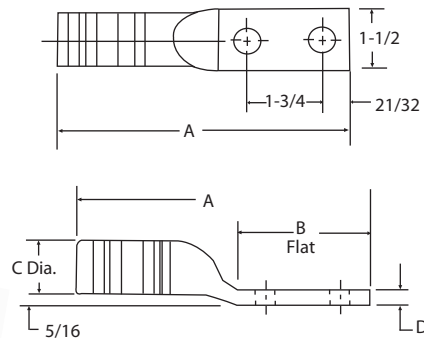
Bolt holes 3/8" on 1" centers, 1/2" on 1-3/4" centers
 Tooling: pp. 116-145 Die Selector Chart: pp. 146-153
[‡] For installations from 16 kV up to 35 kV, consult shielded cable manufacturers for stress relief and insulation requirements.

Compression

Range-Taking Narrow-Tongue Single-Barrel Lugs

- For 90°C certified to 600V and recommended up to 35 kV[‡] applications
- 1-1/2" wide tongues
- Bolt holes on 1-3/4" centers
- Wire barrel factory-filled with oxide inhibiting compound.

Material: Aluminum
 Finish: Tin Plated



CAT. NO.	AL-CU Cable Range	Bolt Size (in.)	No. of compression		Dimensions in. (mm)				Hex Die No.	Color Code
			TBM12M	13642, TBM15	A	B	C	D		
60273N	350-500 kcmil	1/2	4	4	6.88 (174.8)	3.13 (79.5)	1.28 (32.5)	0.41 (10.4)	99H	Pink
60278N	500-750 kcmil	1/2	-	4	7.13 (181.1)	3.69 (93.7)	1.50 (38.1)	0.50 (12.7)	115H	Yellow

Tooling: pp. 116-145 Die Selector Chart: pp.146-153
[‡] For installations from 16 kV up to 35 kV, consult shielded cable manufacturers for stress relief and insulation requirements.

Connectors for Aluminum/Copper Code Conductors



For aluminum-to-copper or aluminum-to-aluminum splicing.

Two-Way Splice Connectors

Material: High-Conductivity Wrought Aluminum
Finish: Electro-Tin Plated



- Connectors are pre-filled
- For 90°C certified to 600V and recommended up to 35 kV* applications
- For aluminum and copper concentric conductors and compact code aluminum strandings
- Permit aluminum conductors to be spliced to copper or aluminum conductors

CAT. NO.	Cable Size	Dimensions in. (mm)		Die Code	Color Code
		A	E		
60500-TB	10 Str.	1.00 (25.4)	0.27 (6.9)	21	Red
60501-TB	8 Str.	1.19 (30.2)	0.28 (7.1)	24	Blue
60507-TB	6 Str.	1.63 (41.4)	0.35 (8.9)	29	Grey
60512	4 Str.	1.81 (46.0)	0.46 (11.7)	37	Green
60516	2 Str./3 Str.	1.81 (46.0)	0.51 (13.0)	42	Pink
60522-TB	1 Str.	2.38 (60.5)	0.56 (14.2)	45	Gold
60530-TB	1/0	2.38 (60.5)	0.62 (15.7)	50	Tan
60536	2/0	2.50 (63.5)	0.70 (17.8)	54	Olive
60542	3/0	2.81 (71.4)	0.77 (19.6)	60	Ruby
60548	4/0	3.66 (93.0)	0.86 (21.8)	66	White
60554	250 kcmil	3.91 (99.3)	0.92 (23.4)	71	Red
60560	300 kcmil	3.97 (100.8)	0.99 (25.1)	76	Blue
60565	350 kcmil	4.97 (126.2)	1.09 (27.7)	87	Brown
60568	400 kcmil	4.97 (126.2)	1.18 (30.0)	94	Green
60571	500 kcmil	4.97 (126.2)	1.28 (32.5)	99	Pink
60574	600 kcmil	5.22 (132.6)	1.36 (34.5)	106	Black
60576	700 kcmil	5.44 (138.2)	1.44 (36.6)	112	Purple
60578	750 kcmil	5.69 (144.5)	1.50 (38.1)	115	Yellow
60584	1000 kcmil	6.69 (169.9)	1.77 (45.0)	140	-

Tooling: pp. 116-145 Die Selector Chart: pp. 146-153
* For installations from 16 kV up to 35 kV, consult shielded cable manufacturers for stress relief and insulation requirements.

Splice aluminum conductors to copper conductors of equal ampacities.

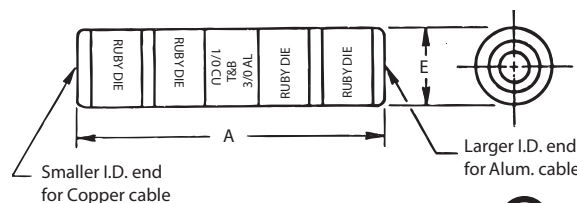
Aluminum Reducing Connectors



- For 90°C, certified to 600V and recommended up to 35 kV* applications
- Filled with high-temperature oxide inhibiting compound
- Designed for the right combination of equivalent sizes (Example: 4/0 aluminum to 2/0 copper)
- Selection table gives aluminum/copper equivalents to all sizes

Material: High-Conductivity Wrought Aluminum

Finish: Electro-Tin Plated



CAT. NO.	Cable Size		Dimensions in. (mm)		Die Code	Color Code
	Alum.	Copper	A	E		
60905-TB	8	10	0.81 (20.6)	0.28 (7.1)	24	Blue
60910	6	8	1.63 (41.4)	0.34 (8.6)	29	Grey
60915	4	6	1.81 (46.0)	0.44 (11.2)	37	Green
60925	1	3	2.38 (60.5)	0.53 (13.5)	45	Gold
60930	1/0	2	2.38 (60.5)	0.63 (16.0)	50	Tan
60935	2/0	1	2.50 (63.5)	0.69 (17.5)	54	Olive
60940	3/0	1/0	2.81 (71.4)	0.75 (19.1)	60	Ruby
60945	4/0	2/0	3.75 (95.3)	0.88 (22.4)	66H	White
60950	250 kcmil	3/0	4.00 (101.6)	0.94 (23.9)	71H	Red
60955	300 kcmil	4/0	4.06 (103.4)	1.00 (25.4)	76H	Blue
60960	350 kcmil	4/0	5.06 (128.5)	0.09 (2.3)	87H	Brown
60965	400 kcmil	250 kcmil	5.06 (128.5)	1.22 (31.0)	94H	Green
60970	500 kcmil	350 kcmil	5.06 (128.5)	1.31 (33.3)	99H	Pink
60975	600 kcmil	400 kcmil	5.31 (134.9)	1.34 (34.0)	106H	Black
60980	700 kcmil	500 kcmil	5.56 (141.2)	1.44 (36.6)	112H	Purple
60985	750 kcmil	500 kcmil	5.81 (147.6)	1.50 (38.1)	115H	Yellow

Die Selector Chart: pp. 146-153
* For installations from 16 kV up to 35 kV, consult shielded cable manufacturers for stress relief and insulation requirements.

Installing Tools:
TBM5(S) #10 - 4/0
TBM6(S) #10 - 350 kcmil
TBM8(S) #10 - 350 kcmil