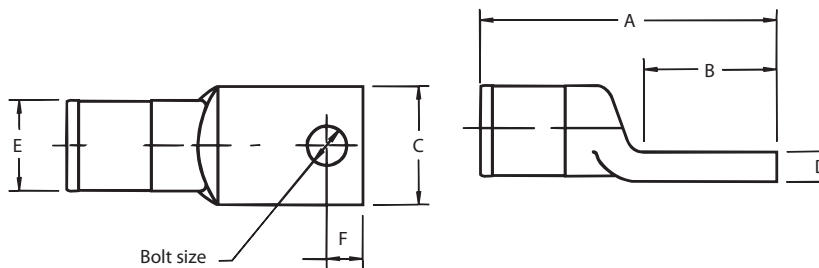


Connectors for Copper Conductors

Cast Copper One-Hole Lugs Certified to 600V and Recommended up to 35 kV* – Heavy-Duty

Material: High-Conductivity
Wrought Copper

Finish: Electro Tin Plate



C o m p r e s s i o n



CAT. NO.	Cable Size Code	Dimensions in. (mm)					Bolt Size (in.)	Die Code
		A	B	C	D	F		
53104	8	1.43 (36.3)	0.75 (19.1)	0.50 (12.7)	0.12 (3.0)	0.28 (7.1)	#10	29
53105	6	1.43 (36.3)	0.75 (19.1)	0.50 (12.7)	0.12 (3.0)	0.28 (7.1)	1/4	29
53106	4	1.43 (36.3)	0.75 (19.1)	0.50 (12.7)	0.12 (3.0)	0.28 (7.1)	1/4	29
53107	2	2.00 (50.8)	1.00 (25.4)	0.75 (19.1)	0.25 (6.4)	0.43 (10.9)	1/4	45
53108	1	2.00 (50.8)	1.00 (25.4)	0.75 (19.1)	0.25 (6.4)	0.43 (10.9)	1/4	45
53109	1/0	2.00 (50.8)	1.00 (25.4)	0.75 (19.1)	0.25 (6.4)	0.43 (10.9)	3/8	45
53161*	325/24	2.18 (55.4)	0.75 (19.1)	0.81 (20.6)	0.21 (5.3)	0.43 (10.9)	3/8	54
53110	2/0	2.63 (66.8)	1.25 (31.8)	1.00 (25.4)	0.28 (7.1)	0.53 (13.5)	3/8	66
53111	3/0	2.63 (66.8)	1.25 (31.8)	1.00 (25.4)	0.28 (7.1)	0.53 (13.5)	3/8	66
53112	4/0	2.63 (66.8)	1.25 (31.8)	1.00 (25.4)	0.28 (7.1)	0.53 (13.5)	3/8	66
53165*	650/24	3.06 (91.4)	1.38 (35.1)	1.18 (30.0)	0.31 (7.9)	0.75 (19.1)	1/2	76
53113	250 kcmil	3.06 (91.4)	1.50 (38.1)	1.18 (30.0)	0.31 (7.9)	0.75 (19.1)	1/2	76
53114	300 kcmil	3.06 (91.4)	1.50 (38.1)	1.18 (30.0)	0.31 (7.9)	0.75 (19.1)	1/2	76
53115	350 kcmil	3.81 (96.8)	2.00 (50.8)	1.38 (35.1)	0.38 (9.7)	0.81 (20.6)	1/2	99
53116	400 kcmil	3.81 (96.8)	2.00 (50.8)	1.38 (35.1)	0.38 (9.7)	0.81 (20.6)	1/2	99
53118	500 kcmil	3.81 (96.8)	2.00 (50.8)	1.38 (35.1)	0.38 (9.7)	0.81 (20.6)	1/2	99
53168*	1100/24	3.81 (96.8)	1.63 (41.4)	1.63 (41.4)	0.40 (10.2)	0.88 (22.4)	1/2	107
53169*	1325/24	3.81 (96.8)	1.63 (41.4)	1.63 (41.4)	0.40 (10.2)	0.88 (22.4)	1/2	107
53123	750 kcmil	4.18 (106.2)	2.12 (53.8)	1.63 (41.4)	0.43 (10.9)	1.00 (25.4)	1/2	112
53173*	2750/24	5.06 (142.2)	1.88 (47.8)	2.12 (53.8)	0.56 (14.2)	1.18 (30.0)	1/2	150

Applicable tools: 12, 14, 15 and 40 Ton (see tool section pp. 126–130)

* Not UL listed and CSA non applicable

Die Selector Chart: pp.146–153

‡ For installations from 16 kV up to 35 kV, consult shielded cable manufacturers for stress relief and insulation requirements.