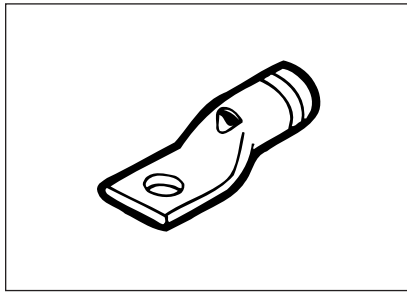


# Blackburn® Colour-Coded Compression Connectors

Type CTL—Copper Lugs, 1-Hole Mount, Short Barrel  



### Copper Compression Connectors

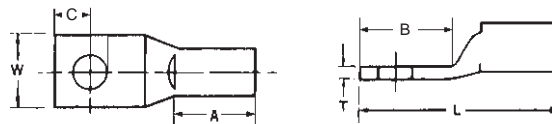
- For use with copper conductor: AWG stranded, flexible cable, welding cable and portable cord
- Specially designed for industrial and building applications
- Made of high conductivity seamless copper tubing
- Tin-plated for corrosion resistance
- Specially chamfered barrel for ease of installation
- Colour-coded for matching die identification
- Can be used for high voltage application up to 35 kV provided proper high voltage insulation techniques are used
- U.L. Listed for AWG conductor when installed with Blackburn, Burndy, T&B or Anderson tools
- Comply with Subpart 111.60-17 of Federal Register's Coast Guard Electrical Engineering Rules and Regulations

### Short Barrel Connectors

- Short barrel connectors designed for regular duty applications
- Ideal for confined areas

Cat. No.	Conductor Size (CU)	Stud Size	Dimensions (in.)						Die Colour Code
			A	B	C	L	W	T	
CTL8-10	8 str.	10	13/32	1/2	7/32	17/32	3/8	1/16	Red
CTL8-14		1/4	13/32	19/32	1/4	17/16	7/16	1/16	
CTL8-516		5/16	13/32	5/8	9/32	17/16	9/16	1/16	
CTL6-10	6 str.	10	7/16	17/32	7/32	17/32	7/16	1/16	Blue
CTL6-14		1/4	7/16	17/32	7/32	17/32	7/16	1/16	
CTL6-516		5/16	7/16	21/32	9/32	17/32	19/32	1/16	
CTL6-38		3/8	7/16	21/32	9/32	17/32	19/32	1/16	
CTL4-10	4 str.	10	1/2	19/32	1/4	13/8	17/32	3/32	Grey
CTL4-14		1/4	1/2	19/32	1/4	13/8	17/32	3/32	
CTL4-516		5/16	1/2	21/32	5/16	17/32	19/32	1/16	
CTL4-38		3/8	1/2	21/32	5/16	17/32	19/32	1/16	
CTL2-14	2 str.	1/4	19/32	21/32	1/4	1 1/2	9/16	3/32	Brown
CTL2-516		5/16	19/32	7/8	3/8	1 23/32	9/16	3/32	
CTL2-38		3/8	19/32	29/32	3/8	1 1/4	9/16	3/32	
CTL2-12		1/2	19/32	1 1/16	1/2	1 29/32	3/4	1/16	
CTL1-14	1 str.	1/4	19/32	21/32	1/4	1 1/2	21/32	3/32	Green
CTL1-516		5/16	19/32	7/8	3/8	1 23/32	21/32	3/32	
CTL1-38		3/8	19/32	29/32	3/32	1 1/4	21/32	3/32	
CTL1-12		1/2	19/32	1 1/4	1/2	2 3/32	3/4	3/32	
CTL10-516	1/0 str.	5/16	11/16	7/8	3/8	1 19/16	3/4	1/8	Pink
CTL10-38		3/8	11/16	29/32	3/8	1 7/8	3/4	1/8	
CTL10-12		1/2	11/16	1 1/4	1/2	2 3/16	3/4	1/8	
CTL20-38	2/0 str.	3/8	13/16	29/32	3/8	2 1/32	19/16	1/8	Black
CTL20-12		1/2	13/16	1 1/4	1/2	2 11/32	19/16	1/8	
CTL30-38	3/0 str.	3/8	13/16	29/32	3/8	2 1/32	29/32	1/8	Orange
CTL30-12		1/2	13/16	1 1/4	1/2	2 11/32	29/32	1/8	
CTL40-38	4/0 str. or 3/0 weld	3/8	15/16	29/32	3/8	2 3/32	1 3/32	1/8	Purple
CTL40-12		1/2	15/16	1 1/4	1/2	2 1/2	1 1/32	1/8	
CTL250-12	250 KCMIL or 4/0 weld	1/2	1 1/32	1 1/4	1/2	2 19/32	1 1/8	1/8	Yellow
CTL300-12	300 KCMIL	1/2	1 1/32	1 1/4	1/2	2 29/32	1 3/16	5/32	White
CTL350-12	350 KCMIL	1/2	1 1/32	1 1/4	1/2	2 29/32	1 11/32	5/32	Red
CTL400-12	400 KCMIL	1/2	1 1/32	1 1/4	1/2	3 3/16	1 13/32	5/32	Blue
CTL400-58		5/8	1 1/32	1 1/16	5/8	3 1/2	1 13/32	5/32	
CTL500-12	500 KCMIL	1/2	1 13/32	1 1/4	1/2	3 1/4	1 19/32	7/32	Brown
CTL500-58		5/8	1 13/32	1 1/16	5/8	3 1/16	1 19/32	7/32	
CTL600-58	600 KCMIL	5/8	1 9/16	1 1/16	5/8	3 29/32	1 3/4	7/32	Green
CTL750-58	750 KCMIL	5/8	1 1/2	1 1/16	5/8	3 29/32	1 29/32	1/4	Black
CTL1000-58	1000 KCMIL	5/8	1 3/4	1 1/16	5/8	4 1/32	2 1/4	9/32	—

See pages 134 to 137 for more tool and die information.



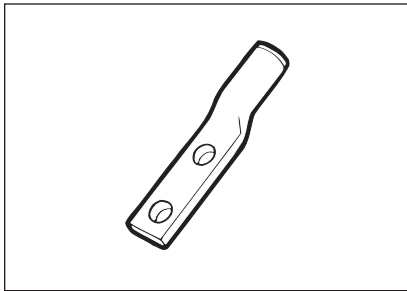
COMPRESSION CONNECTORS

# Blackburn®

## Colour-Coded Compression Connectors



### Type CTL—Copper Lugs, 2-Hole Mount, Short Barrel



#### Copper Compression Connectors

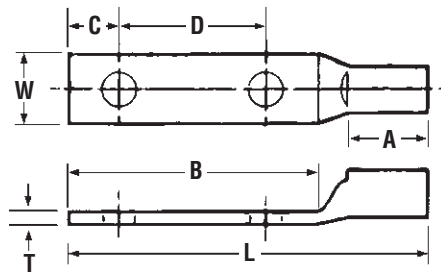
- For use with copper conductor: AWG stranded, flexible cable, welding cable and portable cord
- Specially designed for industrial and building applications
- Made of high conductivity seamless copper tubing
- Tin-plated for corrosion resistance
- Specially chamfered barrel for ease of installation
- Colour-coded for matching die identification
- Can be used for high voltage application up to 35 kV provided proper high voltage insulation techniques are used
- U.L. Listed for AWG conductor when installed with Blackburn, Burndy, T&B or Anderson tools
- Comply with Subpart 111.60-17 of Federal Register's Coast Guard Electrical Engineering Rules and Regulations

#### Short Barrel Connectors

- Short barrel connectors designed for regular duty applications
- Ideal for confined areas

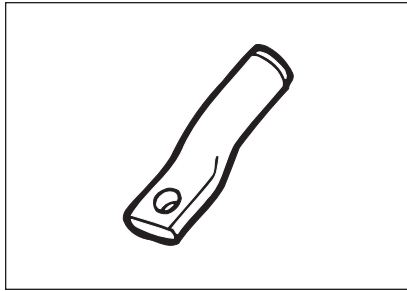
Cat. No.	Conductor Size (CU)	Stud Size	Dimensions (in.)							Die Colour Code	
			A	B	C	D	L	W	T		
CTL6-214	6 str.	1/4	1/2	1 1/4	1/4	5/8	1 3/32	1 1/32	1/16	Blue	
CTL4-214	4 str.		1/2	1 1/4	1/4	5/8	2 1/32	1/2	3/32	Grey	
CTL2-2516	2 str.	5/16	1 1/32	1 5/8	3/8	3/4	2 19/32	9/16	3/32	Brown	
CTL1-2516	1 str.		1 1/32	1 3/4	3/8	7/8	2 19/32	2 1/32	3/32	Green	
CTL10-2516	1/0 str.		1 1/16	1 3/4	3/8	7/8	2 11/16	3/4	1/8	Pink	
CTL202	2/0 str.	1/2	1 3/16	2 13/16	1/2	1 3/4	3 13/16	1 3/16	1/8	Black	
CTL302	3/0 str.		2 5/32	2 13/16	1/2	1 3/4	3 15/16	1 5/16	1/8	Orange	
CTL402	4/0 str.		1 5/16	3	1/2	1 3/4	4 1/4	1 1/32	1/8	Purple	
CTL2502	250 KCMIL		1 1/32	3	1/2	1 3/4	4 11/32	1 1/8	5/32	Yellow	
CTL3002	300 KCMIL		1 1/32	3	1/2	1 3/4	4 17/32	1 1/16	5/32	White	
CTL3502	350 KCMIL		1 1/32	3	1/2	1 3/4	4 17/32	1 11/32	5/32	Red	
CTL4002	400 KCMIL		1 11/32	3	1/2	1 3/4	4 15/16	1 13/32	5/32	Blue	
CTL5002	500 KCMIL		1 3/8	3	1/2	1 3/4	5	1 17/32	7/32	Brown	
CTL6002-38	600 KCMIL		3/8	1 17/32	1 29/32	3/8	1 3/4	5 1/8	1 23/32	7/32	Green
CTL6002-12			1 17/32	3	1/2	1 3/4	5 1/8	1 23/32	7/32		
CTL7502	750 KCMIL	1/2	1 1/2	3	1/2	1 3/4	5 3/32	1 29/32	1/4	Black	
CTL10002	1000 KCMIL	1 3/4	3	1/2	1 3/4	5 1/16	2 1/4	9/32	—		

See pages 134 to 137 for more tool and die information.



# Blackburn® Colour-Coded Compression Connectors

## Type CTL—Copper Lugs, 1-Hole Mount, Long Barrel



### Copper Compression Connectors

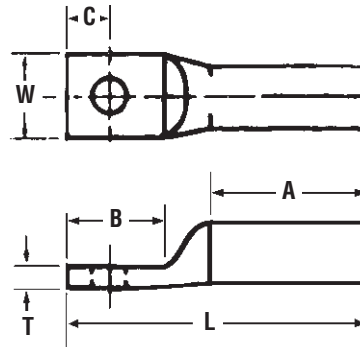
- For use with copper conductor: AWG stranded, flexible cable, welding cable and portable cord
- Specially designed for industrial and building applications
- Made of high conductivity seamless copper tubing
- Tin-plated for corrosion resistance
- Specially chamfered barrel for ease of installation
- Colour-coded for matching die identification
- Can be used for high voltage application up to 35 kV provided proper high voltage insulation techniques are used
- U.L. Listed for AWG conductor when installed with Blackburn, Burndy, T&B or Anderson tools
- Comply with Subpart 111.60-17 of Federal Register's Coast Guard Electrical Engineering Rules and Regulations

### Long Barrel Connectors

- Ideal for industrial, oil rig, mining, welding and transportation electrical termination applications
- Heavy duty design which permits additional crimp for added mechanical strength

Cat. No.	Conductor Size AWG (CU)	Flexible Conductor Size	Stranding	Stud Size	Dimensions (in.)						Die Colour Code
					A	B	C	L	W	T	
CTL8L-14	8 str.	8	37/24	1/4	25/32	5/8	1/4	1 1/8	1 1/32	1/16	Red
CTL6L-14	6 str.	6	61/24		25/32	5/8	1/4	1 1/8	1 1/32	1/16	Blue
CTL4L-14	4 str.	5	91/24		25/32	5/8	1/4	1 11/16	1/2	3/32	Grey
CTL2L-516	2 str.	3	125/24	5/16	7/8	7/8	3/8	2 1/32	9/16	3/32	Brown
CTL1L-516	1 str.	2	150/24		1 3/32	7/8	3/8	2 5/32	2 1/32	3/32	Green
CTL10L-516	1/0 str.	1	225/24	3/8	1 3/32	7/8	3/8	2 1/32	3/4	1/8	Pink
CTL20L-38	2/0 str.	1/0	275/24		1 3/32	29/32	3/8	2 1/4	1 1/16	1/8	Black
CTL30L-12	3/0 str.	2/0	325/24	1/2	1 1/8	1 1/4	1/2	2 11/16	29/32	1/8	Orange
CTL40L-12	4/0 str.	—	—		1 3/8	1 1/4	1/2	2 15/16	1 1/32	1/8	Purple
CTL250L-12	250 KCMIL	3/0	450/24		1 19/32	1 1/4	1/2	3 3/8	1 1/8	1/8	Yellow
CTL300L-12	300 KCMIL	4/0	550/24	5/8	1 25/32	1 1/4	1/2	3 17/32	1 3/16	1/8	White
CTL350L-12	350 KCMIL	263	650/24		1 27/32	1 1/4	1/2	3 19/32	1 11/32	5/32	Red
CTL400L-58	400 KCMIL	313	775/24	5/8	1 27/32	1 1/16	5/8	4 1/32	1 13/32	5/32	Blue
CTL500L-58	500 KCMIL	373	925/24		2 11/32	1 1/16	5/8	4 1/2	1 19/32	3/16	Brown
CTL600L-58	600 KCMIL	444	1100/24		2 1/8	1 1/16	5/8	4 5/16	1 23/32	7/32	Green
CTL750L-58	750 KCMIL	535	1325/24		2 3/8	1 1/16	5/8	4 21/32	1 29/32	1/4	Black
CTL1000L-58	1000 KCMIL	646	1600/24		2 7/8	1 1/16	5/8	5 5/32	2 1/4	9/32	—
		777	1925/24								

See pages 134 to 137 for more tool and die information.

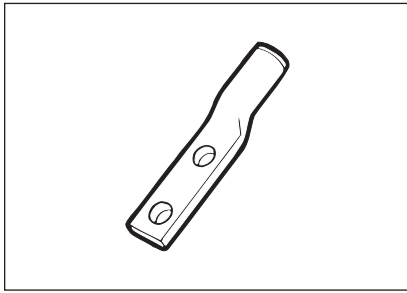


COMPRESSION CONNECTORS

# Blackburn®

## Colour-Coded Compression Connectors

### Type LCN—Copper Lugs, 2-Hole Mount, Long Barrel



#### Copper Compression Connectors

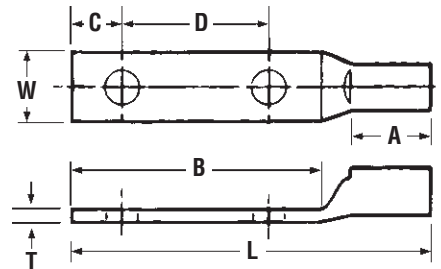
- For use with copper conductor: AWG stranded, flexible cable, welding cable and portable cord
- Specially designed for industrial and building applications
- Made of high conductivity seamless copper tubing
- Tin-plated for corrosion resistance
- Specially chamfered barrel for ease of installation
- Colour-coded for matching die identification
- Can be used for high voltage application up to 35 kV provided proper high voltage insulation techniques are used
- U.L. Listed for AWG conductor when installed with Blackburn, Burndy, T&B or Anderson tools
- Comply with Subpart 111.60-17 of Federal Register's Coast Guard Electrical Engineering Rules and Regulations

#### Long Barrel Connectors

- Ideal for industrial, oil rig, mining, welding and transportation electrical termination applications
- Heavy duty design which permits additional crimp for added mechanical strength

Cat. No.	Conductor Size AWG (CU)	Flexible Conductor Size	Stranding	Stud Size	Dimensions (in.)							Die Colour Code
					A	B	C	D	L	W	T	
LCN8-14	8 str.	8	37/24	1/4	29/32	1 3/16	1/4	5/8	2 1/8	15/32	1/16	Red
LCN6-14	6 str.	6	61/24		29/32	1 1/4	1/4	5/8	2 1/4	13/32	1/16	Blue
LCN6-12				1/2	29/32	3	1/2	1 3/4	4 3/32	7/8	3/32	
LCN4-14	4 str.	5	91/24	1/4	29/32	1 3/16	1/4	5/8	2 1/16	17/32	3/16	Grey
LCN4-12				1/2	29/32	3	1/2	1 3/4	4 3/32	7/8	3/32	
LCN2-516	2 str.	3	125/24	5/16	7/8	1 5/8	3/8	3/4	2 15/16	9/16	3/32	Brown
LCN2-12				1/2	7/8	3	1/2	1 3/4	4 1/4	7/8	3/32	
LCN1-516	1 str.	2	150/24	5/16	1 1/32	1 5/8	3/8	7/8	2 31/32	21/32	3/32	Green
LCN1-12				1 1/32	3	1/2	1 3/4	4 13/32	7/8	3/32		
LCN10	1/0	1	225/24	1/2	1 1/32	3	1/2	1 3/4	3 31/32	3/4	1/8	Pink
LCN20	2/0	1/0	275/24		1 1/16	3	1/2	1 3/4	4 3/16	13/16	1/8	Black
LCN30	3/0	2/0	325/24		1 1/8	2 15/16	1/2	1 3/4	4 7/16	15/16	1/8	Orange
LCN40	4/0	—	—		1 3/8	3	1/2	1 3/4	4 11/16	1 1/32	1/8	Purple
LCN250	250 KCML	3/0	450/24		1 19/32	3	1/2	1 3/4	4 29/32	1 1/16	1/8	Yellow
LCN300	300 KCML	4/0	550/24		1 29/32	3	1/2	1 3/4	5 3/32	1 1/16	1/8	White
LCN350	350 KCML	263	650/24		1 27/32	3	1/2	1 3/4	5 11/32	1 1/32	5/32	Red
LCN400	400 KCML	313	775/24		1 27/32	3	1/2	1 3/4	5 7/16	1 13/32	5/32	Blue
LCN500	500 KCML	373	925/24		2 11/32	3	1/2	1 3/4	5 15/16	1 19/32	3/16	Brown
LCN600	600 KCML	444	1100/24		2 1/8	3	1/2	1 3/4	5 3/4	1 23/32	7/32	Green
LCN75	750 KCML	535	1325/24	2 3/8	3	1/2	1 3/4	6 3/32	1 23/32	1/4	Black	
LCN99	1000 KCML	646 777	1600/24 1925/24	2 7/8	3	1/2	1 3/4	6 19/32	2 1/4	9/32	—	

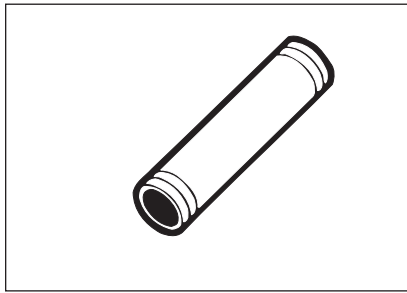
See pages 134 to 137 for more tool and die information.



# Blackburn® Colour-Coded Compression Connectors



## Type CU—Copper Splices, Long Barrel



### Copper Compression Connectors

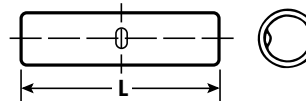
- For use with copper conductor: AWG stranded, flexible cable, welding cable and portable cord
- Specially designed for industrial and building applications
- Made of high conductivity seamless copper tubing
- Tin-plated for corrosion resistance
- Specially chamfered barrel for ease of installation
- Colour-coded for matching die identification
- Can be used for high voltage application up to 35 kV provided proper high voltage insulation techniques are used
- U.L. Listed for AWG conductor when installed with Blackburn, Burndy, T&B or Anderson tools
- Comply with Subpart 111.60-17 of Federal Register's Coast Guard Electrical Engineering Rules and Regulations

### Long Barrel Connectors

- Ideal for industrial, oil rig, mining, welding and transportation electrical termination applications
- Heavy duty design which permits additional crimp for added mechanical strength

Cat. No.	Conductor Size AWG (CU)	Flexible Conductor		Length L (in.)	Die Colour Code
		CMA	Stranding		
CU8	8 str.	8	37/24	1¼	Red
CU6	6 str.	6	61/24		Blue
CU4	4 str.	5	91/24		Grey
CU2	2 str.	3	125/24	1½	Brown
CU1	1 str.	2	150/24	2	Green
CU10	1/0 str.	1	225/24		Pink
CU20	2/0 str.	1/0	275/24	2½	Black
CU30	3/0 str.	2/0	325/24	2¾	Orange
CU40	4/0 str.	—	—	2¾	Purple
CU250	250 KCMIL	3/0	450/24	3¾	Yellow
CU300	300 KCMIL	4/0	550/24	3½	White
CU350	350 KCMIL	263	650/24	3¾	Red
CU400	400 KCMIL	313	755/24		Blue
CU500	500 KCMIL	373	925/24	4¾	Brown
CU600	600 KCMIL	444	1100/24	4¾	Green
CU750	750 KCMIL	535	1325/24	4¾	Black
CU1000	1000 KCMIL	646	1600/24	5¾	—
		777	1925/24		

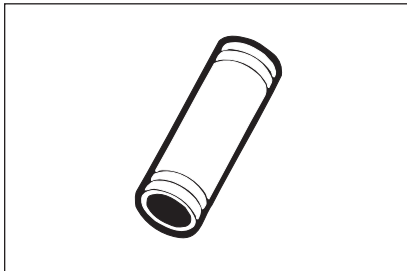
See page 135 for more tool and die information.



COMPRESSION CONNECTORS

# Blackburn®

## Colour-Coded Compression Connectors



### Copper Compression Connectors

- For use with copper conductor: AWG stranded, flexible cable, welding cable and portable cord
- Specially designed for industrial and building applications
- Made of high conductivity seamless copper tubing
- Tin-plated for corrosion resistance
- Specially chamfered barrel for ease of installation
- Colour-coded for matching die identification
- Can be used for high voltage application up to 35 kV provided proper high voltage insulation techniques are used
- U.L. Listed for AWG conductor when installed with Blackburn, Burndy, T&B or Anderson tools
- Comply with Subpart 111.60-17 of Federal Register's Coast Guard Electrical Engineering Rules and Regulations

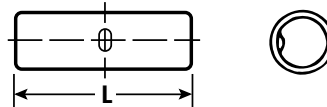
### Short Barrel Connectors

- Short barrel connectors designed for regular duty applications
- Ideal for confined areas

### Type CSP—Copper Splices, Short Barrel

Cat. No.	Conductor Size (CU)	Length L (in.)	Die Colour Code
CSP8	8 str.	1	Red
CSP6	6 str.	1	Blue
CSP4	4 str.	1	Grey
CSP2	3-2 str.	1¼	Brown
CSP1	1 str.	1½	Green
CSP10	1/0 str.	1¾	Pink
CSP20	2/0 str.	1¾	Black
CSP30	3/0 str.	1¾	Orange
CSP40	4/0 str.	1¾	Purple
CSP250	250 KCMIL	2¼	Yellow
CSP300	300 KCMIL	2½	White
CSP350	350 KCMIL	2½	Red
CSP400	400 KCMIL	2¾	Blue
CSP500	500 KCMIL	2¾	Brown
CSP600	600 KCMIL	3	Green
CSP750	750 KCMIL	3	Black
CSP1000	1000 KCMIL	3¾	—

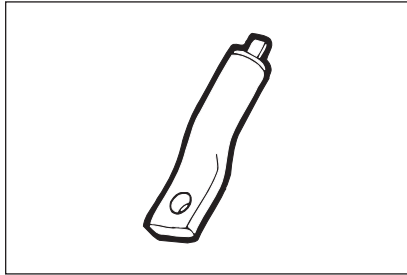
See page 136 for more tool and die information.



# Blackburn® Colour-Coded Compression Connectors



## Type ATL—Aluminum Lugs, 1-Hole



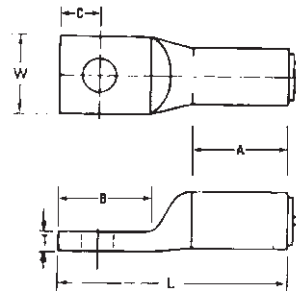
### Aluminum Compression Connectors

- Specifically designed for use with aluminum conductor (concentric, compressed or compact)
- Also listed for use with copper conductor
- Made of high conductivity seamless aluminum tubing
- Tin-plated for corrosion resistance
- Chamfered barrels for ease of installation
- Can be used for high voltage application up to 35 kV provided high voltage insulation techniques are used
- Colour-coded for quick, easy die identification
- Pre-filled with oxide inhibiting compound
- U.L. Listed when installed with Blackburn, Burndy, T&B or Anderson tools

Cat. No.	Conductor Size (AL or CU)	Stud Size	Dimensions (in.)						Die Colour Code
			A	B	C	L	W	T	
ATL8-10	8 str.	10	1/2	19/32	7/32	1 1/32	1 1/32	3/32	Blue
ATL8-14		1/4	1/2	1 1/16	1 1/32	1 1/8	7/16	3/32	
ATL6-10	6 str.	10	2 9/32	9/16	7/32	1 1/2	1 5/32	1/8	Grey
ATL6-14		1/4	2 9/32	2 3/32	1 5/32	1 21/32	1 5/32	1/8	
ATL6-38		3/8	2 7/32	2 3/32	7/16	1 27/32	5/8	3/32	
ATL4-14	4 str.	1/4	2 7/32	1 9/16	1 1/32	1 29/32	5/8	3/16	Green
ATL4-516		5/16	2 7/32	1	7/16	2 1/16	5/8	3/16	
ATL4-38		3/8	2 7/32	2 3/32	7/16	2	5/8	3/16	
ATL2-14	2 str.	1/4	2 7/32	2 3/32	1 1/32	1 1 1/16	2 3/32	3/16	Pink
ATL2-516		5/16	2 7/32	7/8	7/16	2 1 1/32	3/4	3/16	
ATL2-38		3/8	2 7/32	2 3/32	7/16	2 1/16	2 3/32	3/16	
ATL1-516	1 str.	5/16	2 7/32	7/8	7/16	2 1/32	2 3/32	3/16	Gold
ATL1-38		3/8	2 7/32	2 3/32	7/16	2 3/8	3/4	3/16	
ATL10-516		1/0 str.	5/16	1 1/32	1	7/16	2 1 7/32	7/8	
ATL10-38	3/8		1 1/32	1 1/16	7/16	2 1 9/32	7/8	3/16	
ATL10-12	1/2		1 1/32	1 3/8	1 1/16	2 1 5/16	1 5/16	3/16	
ATL20-38	2/0 str.	3/8	1 3/16	1	7/16	2 5/8	3 1/32	7/32	Olive
ATL20-12		1/2	1 3/16	1 3/8	1 1/16	3	1 1/2	7/32	
ATL30-38	3/0 str.	3/8	1 1 1/32	1 1/16	7/16	2 3 1/16	1 1/16	7/32	Ruby
ATL30-12		1/2	1 1 1/32	1 3/8	1 1/16	3 3/8	1 1/16	7/32	
ATL40-38	4/0 str.	3/8	1 7/8	1 3/32	3/8	3 3/4	1 3/16	1/4	White
ATL40-12		1/2	1 7/8	1 1/4	1/2	3 7/8	1 3/16	1/4	
ATL250-12	250 KCMIL	1/2	2 1/32	1 1/4	1/2	4 1/32	1 3/32	1/4	Red
ATL300-38	300 KCMIL	3/8	2	1 5/16	3/8	4 3/16	1 3/8	3/32	Blue
ATL300-12		1/2	2	1 5/16	1/2	4 3/16	1 3/8	3/32	
ATL350-12	350 KCMIL	1/2	2 1 1/16	1 5/16	1/2	4 7/8	1 1/2	5/16	Brown
ATL400-58	400 KCMIL	3/8	2 1 1/16	1 1/4	1/2	4 1 5/16	1 3/8	3/8	Green
ATL500-12	500 KCMIL	1/2	2 1 1/16	1 1/4	1/2	4 1 5/16	1 2 5/32	3/8	Pink
ATL500-58		3/8	2 1 1/16	2	3/4	5 1 1/16	1 2 5/32	3/8	
ATL600-12	600 KCMIL	1/2	2 1 1/16	2	3/4	5 1 9/16	1 2 29/32	1 1/32	Black
ATL750-12	750 KCMIL	1/2	2 7/8	1 1/4	1/2	5 1/4	2 1/8	3/8	—
ATL750-58		3/8	2 7/8	2	3/4	6 1/32	2 1/8	3/8	

COMPRESSION CONNECTORS

See page 138 for more tool and die information.

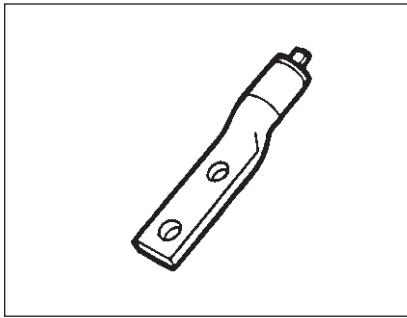


# Blackburn®

## Colour-Coded Compression Connectors



### Type ATL—Aluminum Lugs, 2-Hole

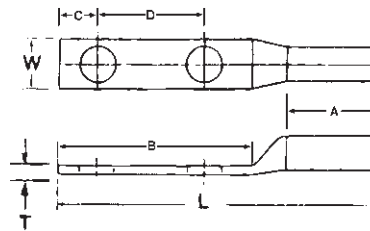


#### Aluminum Compression Connectors

- Specifically designed for use with aluminum conductor (concentric, compressed or compact)
- Also listed for use with copper conductor
- Made of high conductivity seamless aluminum tubing
- Tin-plated for corrosion resistance
- Chamfered barrels for ease of installation
- Can be used for high voltage application up to 35 kV provided high voltage insulation techniques are used
- Colour-coded for quick, easy die identification
- Pre-filled with oxide inhibiting compound
- U.L. Listed when installed with Blackburn, Burndy, T&B or Anderson tools

Cat. No.	Conductor Size (CU)	Stud Size	Dimensions (in.)							Die Colour Code
			A	B	C	D	L	W	T	
ATL102-38	1/0 str.	3/8	1 1/32	2 1/16	3/8	1	3 19/32	7/8	3/16	Tan
ATL102			1 1/16	3	1/2	1 1/4	4 9/16	15/16	3/16	
ATL202	2/0 str.	1/2	1 1/16	3 3/8	3/4	1 1/4	5	3/32	7/32	Olive
ATL302	3/0 str.		1 11/32	3 3/8	3/4	1 1/4	5 3/32	1 1/16	7/32	Ruby
ATL402	4/0 str.		1 1/8	3	1/2	1 1/4	5 5/8	1 1/16	1/4	White
ATL2502	250 KCMIL		2 1/32	3	1/2	1 1/4	5 29/32	1 1/32	1/4	Red
ATL3002	300 KCMIL		2	3	1/2	1 1/4	5 7/8	1 3/8	9/32	Blue
ATL3502	350 KCMIL		2 11/16	3	1/2	1 1/4	6 3/16	1 1/2	5/16	Brown
ATL4002	400 KCMIL		2 11/16	3	1/2	1 1/4	6 11/16	1 5/8	3/8	Green
ATL5002	500 KCMIL		2 11/16	3	1/2	1 1/4	6 11/16	1 29/32	3/8	Pink
ATL6002	600 KCMIL		2 11/16	3	1/2	1 1/4	6 9/16	1 29/32	11/32	Black
ATL7502	750 KCMIL		2 7/8	3	1/2	1 1/4	7 1/8	2 1/8	3/8	—

See page 138 for more tool and die information.

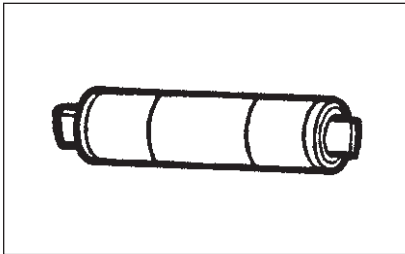


# Blackburn®

## Colour-Coded Compression Connectors



### Type ASP—Aluminum Splices

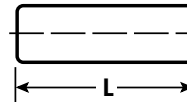


#### Aluminum Compression Connectors

- Specifically designed for use with aluminum conductor (concentric, compressed or compact)
- Also listed for use with copper conductor
- Made of high conductivity seamless aluminum tubing
- Tin-plated for corrosion resistance
- Chamfered barrels for ease of installation
- Can be used for high voltage application up to 35 kV provided high voltage insulation techniques are used
- Colour-coded for quick, easy die identification
- Pre-filled with oxide inhibiting compound
- U.L. Listed when installed with Blackburn, Burndy, T&B or Anderson tools

Cat. No.	Conductor Size (AL or CU)	Length L (in.)	Die Colour Code
ASP8	8 str.	1¼	Blue
ASP6	6 str.	1½	Grey
ASP4	4 str.	1¾	Green
ASP2	2 str.	1¾	Pink
ASP1	1 str.	2¾	Gold
ASP10	1/0 str.	2¾	Tan
ASP20	2/0 str.	2½	Olive
ASP30	3/0 str.	2½	Ruby
ASP40	4/0 str.	3¾	White
ASP250	250 KCMIL	4	Red
ASP300	300 KCMIL	4	Blue
ASP350	350 KCMIL	3¾	Brown
ASP400	400 KCMIL	4¾	Green
ASP500	500 KCMIL	5	Pink
ASP600	600 KCMIL	5½	Black
ASP750	750 KCMIL	5¾	—
ASP1000	1000 KCMIL	6	—

See page 138 for more tool and die information.



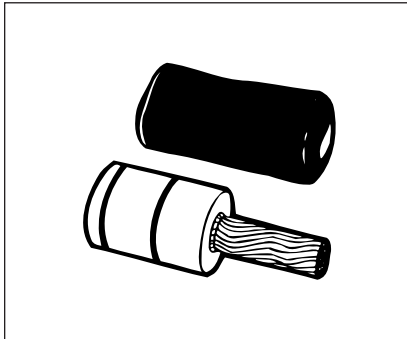
COMPRESSION CONNECTORS

# Blackburn®

## Colour-Coded Compression Connectors



### Type PA—Pin Adapter Terminals



- Connector for aluminum conductor only; pigtail may be inserted into either aluminum or copper connectors
- Insulating covers included
- 90°C Rating per U.L. 486B
- Tin-plated stranded copper wire pigtail
- Tin-plated aluminum barrel pre-filled with oxide inhibitor and capped

Cat. No.	Conductor Size	Copper Stud Size	Dimensions (in.)			Die Colour Code
			A	B	O.D.	
PA06	6 str.	8	$\frac{7}{8}$	$1\frac{1}{32}$	.640	—
PA04	4 str.	6	$\frac{7}{8}$	$1\frac{1}{32}$	.640	—
PA02	2 str.	4	$\frac{7}{8}$	$1\frac{1}{32}$	.640	—
PA01	1 str.	3	1	$1\frac{1}{32}$	.640	—
PA11	1/0 str.	2	$1\frac{1}{4}$	$1\frac{9}{32}$	.906	Red
PA21	2/0 str.	1	$1\frac{1}{4}$	$1\frac{9}{32}$	.906	Red
PA31	3/0 str.	1/0	$1\frac{3}{8}$	$1\frac{7}{8}$	.906	Red
PA41	4/0 str.	2/0	$1\frac{3}{8}$	$1\frac{7}{8}$	.906	Red
PA25	250 KCMIL	3/0	$1\frac{1}{2}$	$2\frac{1}{16}$	1.155	Brown
PA30	300 KCMIL	4/0	$1\frac{5}{8}$	$2\frac{1}{16}$	1.155	Brown
PA35	350 KCMIL	4/0	$1\frac{5}{8}$	$2\frac{1}{16}$	1.155	Brown
PA40	400 KCMIL	250 KCMIL	$1\frac{7}{8}$	$2\frac{3}{32}$	1.375	Pink
PA50	500 KCMIL	350 KCMIL	$1\frac{7}{8}$	$2\frac{3}{32}$	1.375	Pink
PA60	600 KCMIL	350 KCMIL	$1\frac{7}{8}$	$2\frac{3}{4}$	1.500	Yellow
PA75	750 KCMIL	500 KCMIL	2	$2\frac{3}{4}$	1.500	Yellow

U.L. Listed AL9CU.

