

Pipe Straps, Pipe Clamps and Hangers

SECTION 5

Pipe Hangers

C710

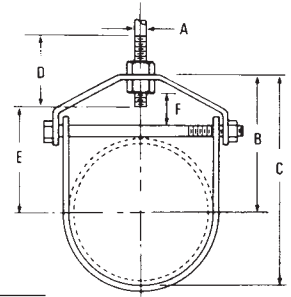
Adjustable Clevis Hanger

Standard Finishes - GoldGalv®, ElectroGalvanized (EG)

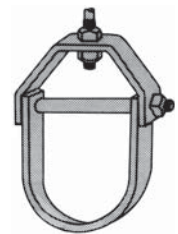
Complies with Specification MSS SP69, Type 1.

Standard Clevis Hanger also available in Stainless Steel

Example: C710-1/2EG



Pipe Size	Size of Steel		A	B	C	D	E	F	Max. Rec. Load, lb	Wt./C lb
	Upper	Lower								
1/2	1/8x1	1/8x1	3/8	1-11/16	2-1/8	2-1/2	7/8	7/16	610	30
3/4	1/8x1	1/8x1	3/8	1-7/8	2-7/16	2-1/2	1	1/2	610	32
1	1/8x1	1/8x1	3/8	2-1/8	2-13/16	2-1/2	1-1/4	5/8	610	36
1-1/4	1/8x1	1/8x1	3/8	2-9/16	3-7/16	2-1/2	1-3/4	7/8	610	42
1-1/2	1/8x1	1/8x1	3/8	3	4	2-1/2	2-1/8	1-1/16	610	55
2	1/8x1	1/8x1	3/8	3-11/16	4-7/8	2-1/2	2-15/16	1-5/8	610	60
2-1/2	3/16x1-1/4	3/16x1-1/4	1/2	4-11/16	6-1/8	3	3-13/16	2	1130	115
3	3/16x1-1/4	3/16x1-1/4	1/2	4-3/4	6-9/16	3	3-7/8	1-3/4	1130	132
3-1/2	3/16x1-1/4	3/16x1-1/4	1/2	4-15/16	6-15/16	3	4-1/16	1-3/4	1130	156
4	1/4x1-1/4	3/16x1-1/4	5/8	5-9/16	7-13/16	3-1/2	4-1/2	1-15/16	1430	190
5	1/4x1-1/4	3/16x1-1/4	5/8	6-3/16	9	3-1/2	5-1/8	1-3/4	1430	240
6	1/4x1-1/2	3/16x1-1/2	3/4	6-13/16	10-1/8	4	5-5/8	1-7/8	1940	320
8	1/4x1-3/4	3/16x1-3/4	7/8	8-5/16	12-5/8	4-1/4	7	2-1/8	1940	500



CL710

Light Duty Adjustable Clevis Hanger

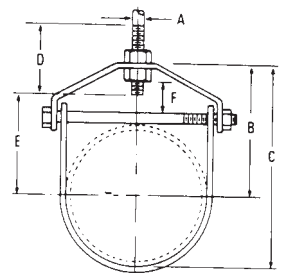
Standard Finishes - GoldGalv®, Bare (B), ElectroGalvanized (EG), Fiberglass (FG).

Carbon Steel

Used on non-insulated, stationary pipelines.

A lock nut above the clevis yoke is required for full rated load.

Example: CL710-3/8B



Pipe Size	Thickness of Steel		A	B	C	D	E	F	Max. Rec. Load, lb	Wt./C lb
	Upper	Lower								
3/8	16 ga x 7/8	16 ga x 7/8	3/8	1-7/8	2-3/16	2-1/2	1-1/4	9/16	150	12
1/2	16 ga x 7/8	16 ga x 7/8	3/8	1-3/4	2-3/16	2-1/2	1-1/8	9/16	150	13
3/4	16 ga x 7/8	16 ga x 7/8	3/8	1-7/8	2-1/4	2-1/2	1-1/4	1/2	250	15
1	16 ga x 7/8	16 ga x 7/8	3/8	2-3/16	2-3/4	2-1/2	1-1/2	3/4	250	18
1-1/4	16 ga x 7/8	16 ga x 7/8	3/8	2-5/8	3-3/8	2-1/2	1-3/4	1	250	20
1-1/2	13 ga x 7/8	13 ga x 7/8	3/8	3	3-7/8	2-1/2	2-1/4	1-3/16	250	30
2	13 ga x 7/8	13 ga x 7/8	3/8	3-9/16	4-3/4	2-1/2	2-13/16	1-5/8	250	38
2-1/2	1/8 x 1-1/4	1/8 x 1-1/4	1/2	4	5-1/2	3	3-1/4	1-3/8	350	80
3	1/8 x 1-1/4	1/8 x 1-1/4	1/2	4-9/16	6-1/2	3	3-9/16	1-1/2	350	89
3-1/2	1/8 x 1-1/4	1/8 x 1-1/4	1/2	5	7	3	4-1/8	1-3/4	350	106
4	3/16 x 1-1/4	1/8 x 1-1/4	1/2	5-1/4	7-1/2	3-1/2	4-1/4	1-7/8	400	146



SECTION 5

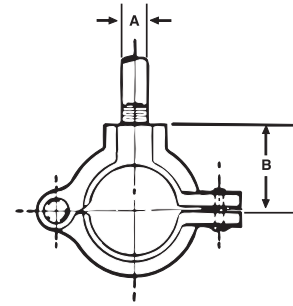
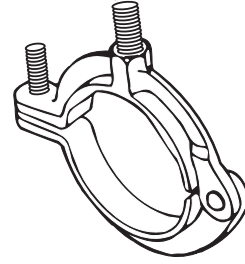
Pipe Straps, Pipe Clamps and Hangers

Pipe Hangers

M718
Split Pipe Ring

Standard Finishes - Bare (B) or Electrogalvanized (EG)
Malleable iron.
For suspension of non-insulated, stationary pipelines.
Example: M718-3/8B

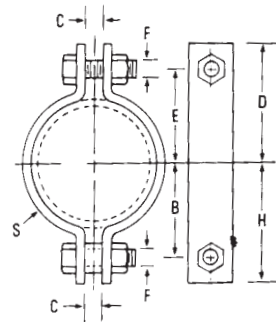
Pipe Size	A	B	Max. Rec. Load/lb	Wt./C lb
3/8	3/8	13/16	180	10
1/2	3/8	7/8	180	13
3/4	3/8	1	180	14
1	3/8	1-1/8	180	16
1-1/4	3/8	1-5/16	180	22
1-1/2	3/8	1-7/16	180	24
2	3/8	1-11/16	180	31
2-1/2	1/2	2-1/8	300	60
3	1/2	2-7/16	300	74
4	1/2	2-15/16	300	116



C725
Medium Pipe Clamp

Standard Finishes - GoldGalv®, Bare (B), Stainless Steel (SS), Electrogalvanized (EG)
Carbon steel. For suspension of pipelines where little or no insulation is required.
Complies with Specification MSS SP69, Type 23.
Example: C725-1/2B

Pipe Size	B	C	D	E	F	H	S	Max. Rec. Load, lb	Wt./C, lb Approx.
1/2	1	7/16	1-5/8	1	5/16	1-1/2	1/8 x 1	500	29
3/4	1-1/8	7/16	1-3/4	1-1/4	5/16	1-3/4	1/8 x 1	500	32
1	1-1/4	7/16	1-13/16	1-1/4	5/16	1-13/16	1/8 x 1	500	33
1-1/4	1-7/16	7/16	2	1-7/16	5/16	2	1/8 x 1	500	38
1-1/2	1-5/8	1/2	2-1/16	1-1/2	5/16	2-1/4	1/8 x 1	715	39
2	2-1/8	9/16	3-1/8	2-1/4	1/2	3	1/4 x 1	1040	117
2-1/2	2-5/16	9/16	3-5/16	2-1/2	1/2	3-1/4	1/4 x 1	1040	128
3	2-3/4	9/16	3-3/4	2-3/4	1/2	3-5/8	1/4 x 1	1040	140
3-1/2	3-7/8	5/8	3-3/4	3	1/2	3-7/8	1/4 x 1	1040	145
4	3-5/16	3/4	4-1/4	3-5/16	5/8	4-1/4	1/4 x 1-1/4	1040	238
6	4-7/8	7/8	5-7/8	5	3/4	5-3/4	3/8 x 1-1/2	1615	542
8	6	1	7	6-1/8	3/4	6-7/8	3/8 x 1-1/2	1615	651
10	7-5/16	1	8-9/16	7-7/16	7/8	8-7/16	1/2 x 2	2490	1360
12	8-1/4	1	9-9/16	8-7/16	7/8	9-3/8	1/2 x 2	2490	1605



Based on the allowable stresses shown in ANSI Code for pressure piping.
For sizes 14 to 24, contact Customer Service.

Pipe Hangers

C720

Riser Clamp

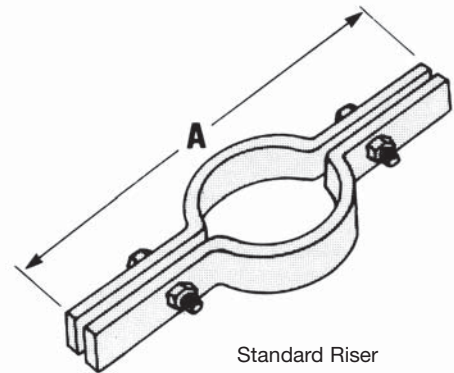
Standard Finishes - GoldGalv®, Bare (B), Stainless Steel (SS)

Available in sizes 1/2" through 10".

Complies with Specification MSS SP69, Type 8.

Example: C720-1 1/2B

Pipe Size	A	Thickness	Width	Bolt	Max. Rec. Load, lb	Wt./Ea. Approx.
1/2	9-1/8	3/16	1	3/8 x 1-1/2	220	1.01
3/4	9-1/4	3/16	1	3/8 x 1-1/2	220	1.06
1	9-5/8	3/16	1	3/8 x 1-1/2	220	1.07
1-1/4	9-7/8	1/4	1	3/8 x 1-1/2	250	1.12
1-1/2	10	1/4	1	3/8 x 1-1/2	250	1.20
2	10-1/2	1/4	1	3/8 x 1-1/2	300	1.25
2-1/2	11-1/16	1/4	1	3/8 x 1-1/2	400	1.67
3	11-13/16	1/4	1	3/8 x 1-1/2	500	1.81
3-1/2	13	1/4	1	1/2 x 1-1/2	600	2.12
4	13-1/2	1/4	1	1/2 x 1-1/2	750	2.22
5	14	1/4	1-1/2	1/2 x 1-3/4	1500	3.44
6	15-3/16	1/4	1-1/2	1/2 x 1-3/4	1600	3.65
8	19	3/8	1-1/2	5/8 x 2-1/2	2500	7.24



C726

Double Bolt Pipe Clamp

Standard Finish - Bare (B)

Carbon Steel. For the suspension of insulated pipelines.

Normally used with weldless eye nut.

Example: C726-1/2B

Pipe Size	B	C	D	E	F	H	S	Max. Rec. Load, lb	Approx. Wt. /C
3/4	1-1/16	5/8	3-3/16	2-1/2	3/8	1-11/16	3/16 x 1	950	66
1	1-1/2	5/8	3-3/4	2-1/2	3/8	2-1/16	3/16 x 1	950	69
1-1/4	1-1/2	3/4	3-11/16	2-7/8	3/8	2-1/4	3/16 x 1	950	75
1-1/2	1-13/16	1-1/16	4-7/8	3-3/4	5/8	2-13/16	1/4 x 1-1/4	1545	181
2	2-1/4	1-1/16	5-11/16	4-11/16	5/8	3-3/16	1/4 x 1-1/4	1545	200
2-1/2	2-5/8	1-1/16	6-1/2	5-3/8	5/8	3-1/2	1/4 x 1-1/4	1545	232
3	2-3/4	1-1/16	6-7/8	6	5/8	3-3/4	1/4 x 1-1/4	1545	258
3-1/2	3	1-1/16	7-1/16	6-3/16	5/8	4	1/4 x 1-1/4	1545	264
4	3-3/8	1-1/16	7-5/8	6-1/2	3/4	4-1/2	3/8 x 2	2500	750
5	3-15/16	1-1/16	8-1/8	7	3/4	5	3/8 x 2	2500	813
6	4-3/4	1-7/16	9-15/16	8-9/16	1	6-1/8	3/8 x 2-1/2	2865	1311
8	5-3/4	1-7/16	10-15/16	9-9/16	1	7-1/8	3/8 x 2-1/2	2865	1467

