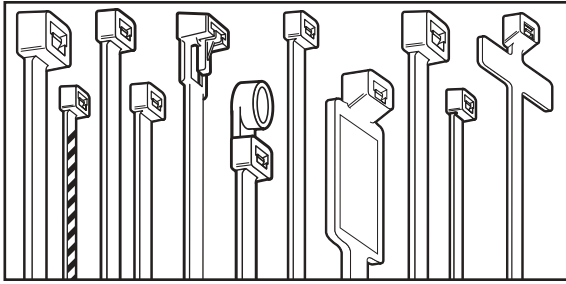


Catamount®

Cable Ties



- MINIATURE
- HEAVY DUTY
- INTERMEDIATE
- EXTRA HEAVY DUTY
- STANDARD
- RELEASABLE TIES

- MOUNTING HEAD
- STRIPED TIES
- RESTRICTED BUNDLE
- IDENTIFICATION TIES
- MIL-SPEC TIES

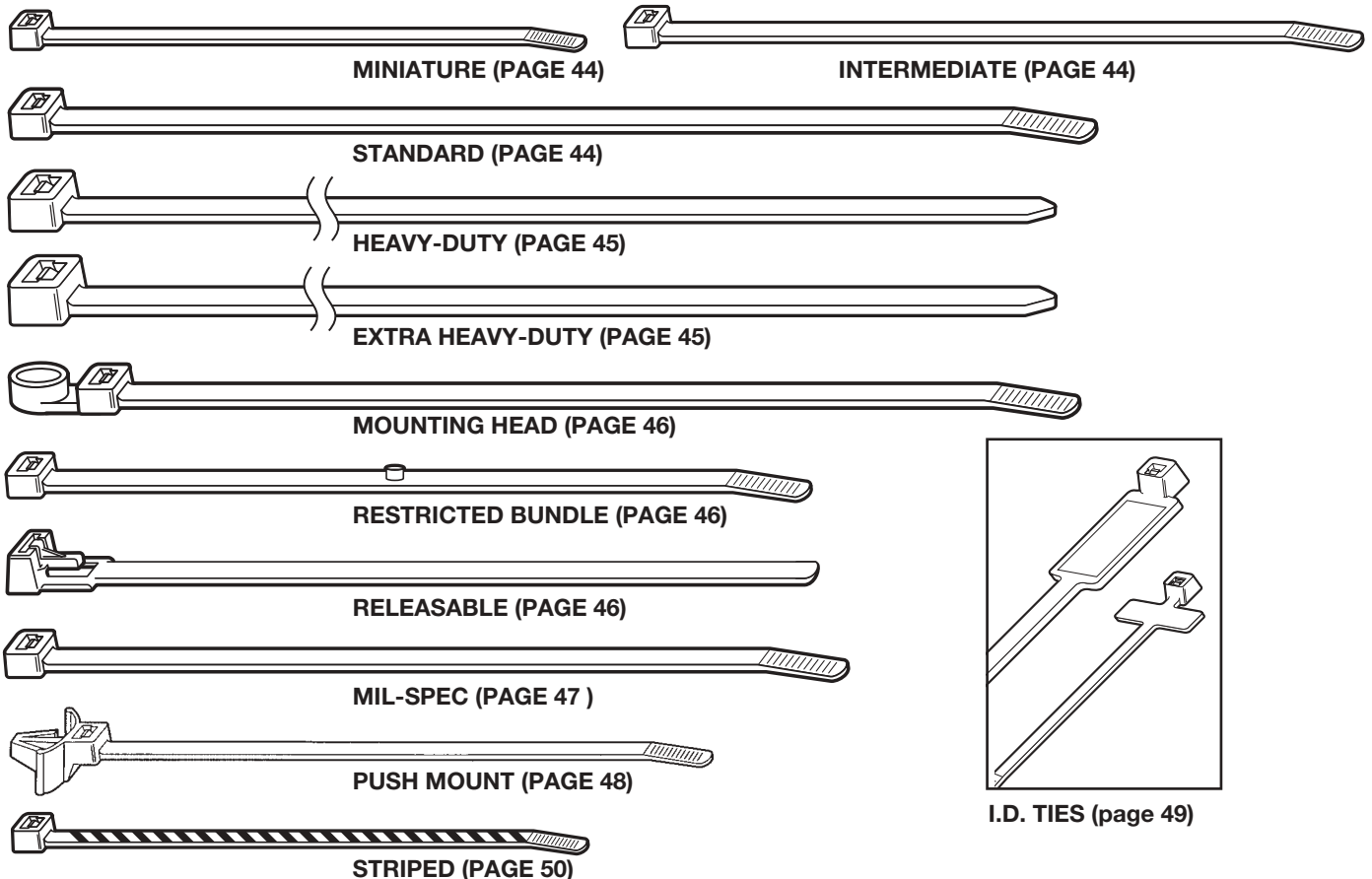
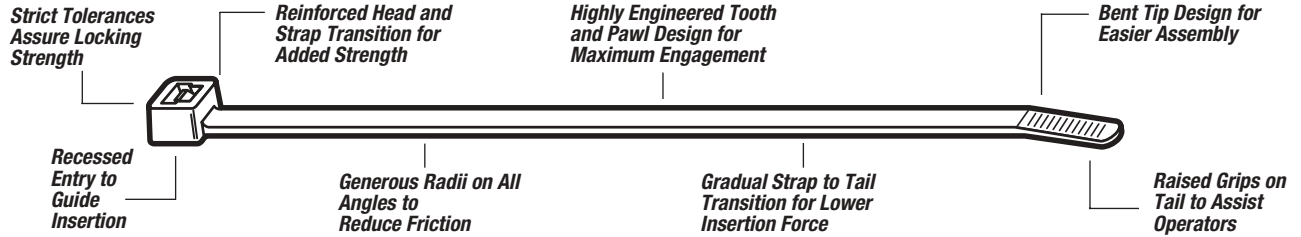
Catamount® Cable Ties are available in lengths from 4" to our exclusive 48" strap. Cable Ties will satisfy bundling requirements from 1/16" to 15" and loop tensile strengths from 18 to 175 pounds.

Cable Ties are stocked in materials and colors as listed. Contact your Catamount® Distributor or Customer Service Representative for availability in special colors.

Where applicable, Catamount® Cable Ties are UL Recognized, Mil-Spec Approved and/or QPL Listed.

State-of-the-art robotic and raw material handling equipment assures product and material integrity throughout the manufacturing process. Overall quality is achieved through statistical analysis and quality driven operator objectives. Catamount® has attained Mil-Spec I-45208 quality ratings from a number of equipment manufacturers.

Catamount® products are sold through stocking T&B Distributors.



Catamount®

Cable Ties

Part Number Construction

L **4** **18** **HS** - **9** **M**

Product Prefix
P - Plain Bagged Cable Ties
L - Cable Ties

Length
18 lb.
30 lb.
40 lb.
50 lb.
120 lb.
175 lb.
250 lb.

Tensile Strength

Type of Product
 Nylon 66 - Leave Blank
 Heat Stabilized - HS
 (Black and Natural Color Only)
 Fluorescent - FL
 Mounting Head - MH
 Pushmount - PM
 Pushmount Releasable - PMR
 Releasable - R
 Restricted Bundle - TB
 Identification - ID

Color
Color Chart

Quantity
Q - 25 pack
L - 50 pack
C - 100 pack
D - 500 pack
M - 1000 pack

MP **NY** - **750** - **9** **C**

Material
 Nylon
TZ - Tefzel
PV - PVC
PE - Polyethylene
FR - Flame Retardant
TL - Teflon

Size / #
.75"

Color
Color Chart

Quantity
Q - 25 pack
L - 50 pack
C - 100 pack
D - 500 pack
M - 1000 pack

Product Prefix
MP - Mounting Pad
ID - Identification
S# - Strapping Thickness
MC - Mounting Cradle
PM - Push Mounts
SM - Screw Mounts
N# - Plain-Edged Cable Clamps / Width
W# - Self-Aligning Cable Clamps / Dia.
UL - Adjustable cable clamps
GG - Gator Grip
FA - Flat Adhesive Clip
FS - Flat Screw Clip
FR - Flat Rubber Adhesive Clip
MS - Snap Mount
RA - Round Adhesive Clip
SR - Spiral Wrap
GS - Grommeting
GR - Extruded Grommeting
GRU - Extruded Grommeting Uncut

Color Table

0 - Black (Weather Resistant)	7 - Purple
1 - Brown	8 - Gray
2 - Red	9 - Natural
3 - Orange	11 - Fluorescent Pink
4 - Yellow	16 - Fluorescent Orange
5 - Green	17 - Fluorescent Yellow
6 - Blue	18 - Fluorescent Green
	20 - Fluorescent Blue

Catamount®

Cable Ties

Materials for Molded Assembly Hardware

Property	ASTM Method	Test Condition	Units	Molded 6/6 Nylon	Heat Stabilized Nylon	UV Black Nylon
Tensile Strength	D638	+73°F; 50% RH	kpsi	11.2	11.2	9.0
Elongation at Break	D638	+73°F; 50% RH	%	Ž300	Ž300	200
Yield Strength	D638	+73°F; 50% RH	kpsi	8.5	8.5	9.0
Shear Strength	D732	Dry As Molded (DAM)	kpsi	9.6	9.6	10.5
Deformation Under Load	D621	2,000 psi +122°F; DAM	%	1.4	1.4	1.2
IZOD Impact	D256	+73°F; 50% RH	ft lb/in	2.1	2.1	2.0
Tensile Impact Strength	D1822	+73°F; Long Specimen; DAM	ft lb/in ²	240	240	N.R.
Melting Point	D789	Fisher-Johns	°F	491	491	491
Thermal Linear Expansion	D696	DAM	in/in/°F	4 x 10 ⁻⁵	4 x 10 ⁻⁵	N.R.
Thermal Conductivity	–	DAM Conche-Fitch	BTU - in/h . ft ² . °F	1.7	1.7	1.7
Brittleness Temperature	D746	50% RH	°F	-85	-85	-62
Oxygen Index	D2863	DAM 50% RH	%O ₂	28 31	28 31	25 31
UL Flammability	UL 94	DAM 50% RH	– –	V-2 V-2	V-2 V-2	V-2 V-2

- Material data as provided by our suppliers.
- Tests conducted on 1/4" specimens.
- N.R. = Not Reported

About Nylon...

Nylons possess an outstanding balance of properties combining strength, moderate stiffness, high service temperature and a high level of toughness. Nylon is particularly resistant to repeated impact, has a low co-efficient of friction and excellent abrasion resistance.

Nylon is resistant to fuels, lubricants and most chemicals, but is attacked by phenols, strong acids and oxidizing agents. Contact your Catamount® Customer Service Representative or your Catamount® Distributor for chemical data relative to your application.

Nylon is inherently susceptible to environmental conditions. Catamount® Cable Ties are moisturized to optimum performance levels at machine-side and should be stored in cool dry areas out of direct sunlight. Cable Ties are packaged in plastic bags to contain moisture and should remain sealed until ready for use.

NBS Smoke Generation for 6/6 Nylon

Sample Thickness	UL Flammability	Energy Source	Specific Optical Density	
			at Maximum Smoke Accumulation	at 2 Minutes
1/16"	94 V-2	Radiant (2.5 watts/sq cm)	13	0
1/8"	94 V-2	Radiant Plus Flaming Gas Jets	26	1

- Results as provided by National Bureau of Standards (NBS). Results may not be directly correlated with larger fires, such as burning buildings. Materials should be tested to your application.

Temperature Index for Molded Nylons

Material	Minimum Thickness (in)	Temperature Index		
		Electrical (°C)	Mechanical w/o Impact (°C)	Hot Wire Ignition (sec)
6/6 Nylon	.058	125	85	15.0
UV Black Nylon	.120	125	85	35.0
Heat Stabilized Nylon	.058	130	105	11.0
	.120	130	110	20.0

- Temperature Index is the temperature at which the specific property will decrease to one-half its original value after 60,000 hours exposure at that temperature.

Catamount®

Cable Ties



Miniature – Series 18

Std. Cat. No.	Bulk Cat. No.	Material	Color	Bundle Diameter		Length		Width		Minimum Loop Tensile		Std. Pkg.	Bulk Pkg.
				Inch	(mm)	Inch	(mm)	Inch	(mm)	LB	(kg)		
L-4-18HS-0-C	L-4-18HS-0-M	Heat Stabilized Nylon	Black	1/16 - 5/8	(2-16)	4.0	(102)	.100	(3)	18	(8.2)	100	1000
L-4-18-9-C	L-4-18-9-M	Nylon	Natural	1/16 - 5/8	(2-16)	4.0	(102)	.100	(3)	18	(8.2)	100	1000
L-4-18-0-C	L-4-18-0-M	Nylon	Black	1/16 - 5/8	(2-16)	4.0	(102)	.100	(3)	18	(8.2)	100	1000
L-6-18-9-C	L-6-18-9-M	Nylon	Natural	1 1/16 - 1 1/2	(2 - 38)	6.4	(163)	.100	(3)	18	(8.2)	100	1000
L-6-18-0-C	L-6-18-0-M	Nylon	Black	1 1/6 - 1 1/2	(2 - 38)	6.4	(163)	.100	(3)	18	(8.2)	100	1000
L-8-18-9-C	L-8-18-9-M	Nylon	Natural	1/16 - 2	(2 - 51)	8.0	(202)	.100	(3)	18	(8.2)	100	1000
L-8-18-0-C	L-8-18-0-M	Nylon	Black	1 1/6 - 2	(2 - 51)	8.0	(202)	.100	(3)	18	(8.2)	100	1000

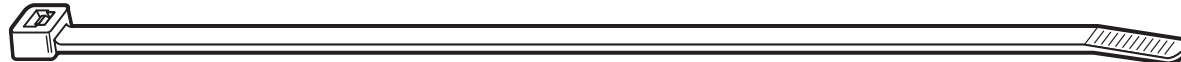
• Use QC-100, L-200, L-400-C, or ERG-299 Installation Tools.
Consult Customer Service for availability and colors.



Intermediate - Series 30/40

Std. Cat. No.	Bulk Cat. No.	Material	Color	Bundle Diameter		Length		Width		Minimum Loop Tensile		Std. Pkg.	Bulk Pkg.
				Inch	(mm)	Inch	(mm)	Inch	(mm)	LB	(kg)		
L-5-30HS-0-C	L-5-30HS-0-M	Heat Stabilized Nylon	Black	1/16 - 1 1/4	(2 - 32)	5.6	(145)	.130	(3)	30	(13.6)	100	1000
L-5-30-9-C	L-5-30-9-M	Nylon	Natural	1/16 - 1 1/4	(2 - 32)	5.6	(145)	.130	(3)	30	(13.6)	100	1000
L-5-30-0-C	L-5-30-0-M	Nylon	Black	1/16 - 1 1/4	(2 - 32)	5.6	(145)	.130	(3)	30	(13.6)	100	1000
L-8-40-9-C	L-8-40-9-M	Nylon	Natural	1/16 - 2	(2-51)	8.5	(215)	.140	(3)	40	(18.2)	100	1000
L-8-40-0-C	L-8-40-0-M	Nylon	Black	1/16 - 2	(2-51)	8.5	(215)	.140	(3)	40	(18.2)	100	1000
L-11-40-9-C	L-11-40-9-D	Nylon	Natural	1/16 - 3	(2-76)	11.5	(282)	.146	(4)	40	(18.2)	100	500
L-11-40-0-C	L-11-40-0-D	Nylon	Black	1/16 - 3	(2-76)	11.5	(282)	.146	(4)	40	(18.2)	100	500
L-14-40-9-C	L-14-40-9-D	Nylon	Natural	1/16 - 4	(2-102)	14.5	(358)	.146	(4)	40	(18.2)	100	500
L-14-40-0-C	L-14-40-0-D	Nylon	Black	1/16 - 4	(2-102)	14.5	(358)	.146	(4)	40	(18.2)	100	500

• Use QC-100, L-200, L-400-C, or ERG-299 Installation Tools.
Consult Customer Service for availability and colors.



Standard - Series 50

Std. Cat. No.	Bulk Cat. No.	Material	Color	Bundle Diameter		Length		Width		Minimum Loop Tensile		Std. Pkg.	Bulk Pkg.
				Inch	(mm)	Inch	(mm)	Inch	(mm)	LB	(kg)		
L-5-50HS-0-C	L-5-50HS-0-M	Heat Stabilized Nylon	Black	1/16 - 1	(2-25)	5.5	(140)	.187	(5)	50	(22.7)	100	1000
L-5-50-9-C	L-5-50-9-M	Nylon	Natural	1/16 - 1	(2-25)	5.5	(140)	.187	(5)	50	(22.7)	100	1000
L-5-50-0-C	L-5-50-0-M	Nylon	Black	1/16 - 1	(2-25)	5.5	(140)	.187	(5)	50	(22.7)	100	1000
L-7-50-9-C	L-7-50-9-M	Nylon	Natural	1/16 - 1 3/4	(2-44)	7.5	(193)	.187	(5)	50	(22.7)	100	1000
L-7-50-0-C	L-7-50-0-M	Nylon	Black	1/16 - 1 3/4	(2-44)	7.5	(193)	.187	(5)	50	(22.7)	100	1000
L-11-50-9-C	L-11-50-9-D	Nylon	Natural	1/16 - 3	(2-76)	11.1	(282)	.187	(5)	50	(22.7)	100	500
L-11-50-0-C	L-11-50-0-D	Nylon	Black	1/16 - 3	(2-76)	11.1	(282)	.187	(5)	50	(22.7)	100	500
L-14-50-9-C	L-14-50-9-D	Nylon	Natural	1/16 - 4	(2-102)	14.1	(358)	.187	(5)	50	(22.7)	100	500
L-14-50-0-C	L-14-50-0-D	Nylon	Black	1/16 - 4	(2-102)	14.1	(358)	.187	(5)	50	(22.7)	100	500

• Use QC-100, L-200, L-400-C, or ERG-299 Installation Tools.
Consult Customer Service for availability and colors.

Sample Catalog Order:

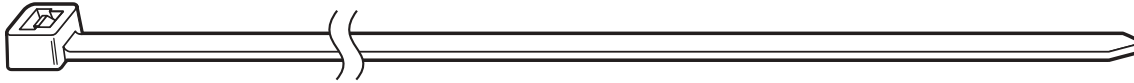
L 4 18 9 C = Natural Color Type

Color Table

0 – Black (Outdoor)	5 – Green	FL11 – Fluorescent Pink
1 – Brown	6 – Blue	FL16 – Fluorescent Orange
2 – Red	7 – Purple	FL17 – Fluorescent Yellow
3 – Orange	8 – Gray	FL18 – Fluorescent Green
4 – Yellow	9 – Natural	FL20 – Fluorescent Blue

Catamount®

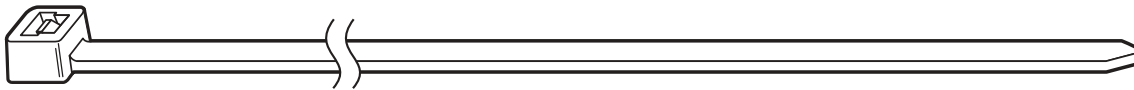
Cable Ties



Heavy Duty - Series 120

Std. Cat. No.	Material	Color	Bundle Diameter		Length		Width		Minimum Loop Tensile		Std. Pkg.
			Inch	(mm)	Inch	(mm)	Inch	(mm)	LB	(kg)	
L-8-120HS-0-C	Heat Stabilized Nylon	Black	3/16 - 2	(5-51)	8.0	(202)	.300	(8)	120	(54.4)	100
L-8-120-9-C	Nylon	Natural	3/16 - 2	(5-51)	8.0	(202)	.300	(8)	120	(54.4)	100
L-8-120-0-C	Nylon	Black	3/16 - 2	(5-51)	8.0	(202)	.300	(8)	120	(54.4)	100
L-11-120-9-C	Nylon	Natural	3/16 - 3	(5-76)	11.1	(282)	.300	(8)	120	(54.4)	100
L-11-120-0-C	Nylon	Black	3/16 - 3	(5-76)	11.1	(282)	.300	(8)	120	(54.4)	100
L-14-120-9-C	Nylon	Natural	3/16 - 4	(5-102)	14.2	(363)	.300	(8)	120	(54.4)	100
L-14-120-0-C	Nylon	Black	3/16 - 4	(5-102)	14.2	(363)	.300	(8)	120	(54.4)	100
L-18-120-9-L	Nylon	Natural	3/16 - 4 7/8	(5-124)	18.0	(457)	.300	(8)	120	(54.4)	50
L-18-120-0-L	Nylon	Black	3/16 - 4 7/8	(5-124)	18.0	(457)	.300	(8)	120	(54.4)	50
L-24-120-9-L	Nylon	Natural	3/16 - 7	(5-178)	24.2	(616)	.300	(8)	120	(54.4)	50
L-24-120-0-L	Nylon	Black	3/16 - 7	(5-178)	24.2	(616)	.300	(8)	120	(54.4)	50
L-28-120-9-L	Nylon	Natural	3/16 - 9	(5-230)	28.0	(816)	.300	(8)	120	(54.4)	50
L-28-120-0-L	Nylon	Black	3/16 - 9	(5-230)	28.0	(816)	.300	(8)	120	(54.4)	50

• Use L-300C or ERG-297 Installation Tool. Consult Customer Service for availability and colors.



Extra Heavy Duty - Series 175

Std. Cat. No.	Material	Color	Bundle Diameter		Length		Width		Minimum Loop Tensile		Std. Pkg.
			Inch	(mm)	Inch	(mm)	Inch	(mm)	LB	(kg)	
L-24-175-9-L	Nylon	Natural	3/16 - 7.2	(5-184)	24.0	(612)	.345	(9)	175	(79.3)	50
L-24-175-0-L	Nylon	Black	3/16 - 7.2	(5-184)	24.0	(612)	.345	(9)	175	(79.3)	50
L-34-175-9-L	Nylon	Natural	3/16 - 10	(5-254)	34.0	(864)	.345	(9)	175	(79.3)	50
L-36-175-9-L	Nylon	Natural	2 3/4 - 10 3/4	(70-273)	36.0	(914)	.345	(9)	175	(79.3)	50
L-36-175-0-L	Nylon	Black	2 3/4 - 10 3/4	(70-273)	36.0	(914)	.345	(9)	175	(79.3)	50
L-41-175-9-L	Nylon	Natural	3/16 - 12	(5-305)	41.0	(1032)	.345	(9)	175	(79.3)	50
L-41-175-0-L	Nylon	Black	3/16 - 12	(5-305)	41.0	(1032)	.345	(9)	175	(79.3)	50
L-48-175-9-L	Nylon	Natural	3/16 - 15	(5-375)	48.0	(1216)	.345	(9)	175	(79.3)	50
L-48-175-0-L	Nylon	Black	3/16 - 15	(5-375)	48.0	(1216)	.345	(9)	175	(79.3)	50

• Use L-300C Installation Tool. Consult Customer Service for availability and colors.

Sample Catalog Order:

L 4 18 9 C = Natural Color Type

Color Table

0 - Black (Outdoor)	5 - Green	11 - Fluorescent Pink
1 - Brown	6 - Blue	16 - Fluorescent Orange
2 - Red	7 - Purple	17 - Fluorescent Yellow
3 - Orange	8 - Gray	18 - Fluorescent Green
4 - Yellow	9 - Natural	20 - Fluorescent Blue

Catamount®

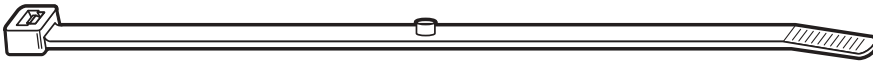
Cable Ties



Mounting Head Ties

Std. Cat. No.	Cat. No. Bulk	Material	Color	Bundle Diameter		Length		Width		Minimum Loop Tensile		Mounting Head Screw Size	Std. Pkg.	Bulk Pkg.
				Inch	(mm)	Inch	(mm)	Inch	(mm)	LB	(kg)			
L-5-30MH-9-C	L-5-30MH-9-M	Nylon	Natural	1/16 - 1 1/4	(2 - 32)	5.85	(148.6)	.140	(4)	30	(13.6)	No. 8	100	1000
L-5-30MH-0-C	L-5-30MH-0-M	Nylon	Black	1/16 - 1 1/4	(2 - 32)	5.85	(148.6)	.140	(4)	30	(13.6)	No. 8	100	1000
L-7-50MH-9-C	L-7-50MH-9-M	Nylon	Natural	1/16 - 1 3/4	(2 - 44)	7.5	(191)	.185	(5)	30	(13.6)	No. 10	100	1000
L-7-50MH-0-C	L-7-50MH-0-M	Nylon	Black	1/16 - 1 3/4	(2 - 44)	7.5	(191)	.185	(5)	30	(13.6)	No. 10	100	1000
L-11-50MH-9-C	L-11-50MH-9-D	Nylon	Natural	1/16 - 3	(2 - 76)	11.1	(282)	.187	(5)	50	(22.7)	No. 10	100	500
L-11-50MH-0-C	L-11-50MH-0-D	Nylon	Black	1/16 - 3	(2 - 76)	11.1	(282)	.187	(5)	50	(22.7)	No. 10	100	500
L-14-50MH-9-C	L-14-50MH-9-D	Nylon	Natural	1/16 - 4	(2 - 102)	14.5	(365)	.187	(5)	50	(22.7)	No. 10	100	500
L-14-50MH-0-C	L-14-50MH-0-D	Nylon	Black	1/16 - 4	(2 - 102)	14.5	(365)	.187	(5)	50	(22.7)	No. 10	100	500
L-14-120MH-9-C		Nylon	Natural	3/16 - 4	(5 - 102)	14.85	(374)	.300	(8)	120	(54.4)	1/4 inch	100	-
L-14-120MH-0-C		Nylon	Black	3/16 - 4	(5 - 102)	14.85	(374)	.300	(8)	120	(54.4)	1/4 inch	100	-

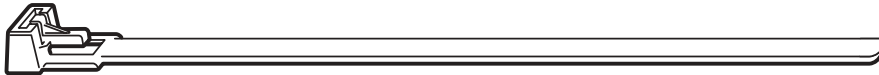
• Use QC-100, L-200, L-400-C, ERG-297, or ERG-299 Installation Tool. Consult Customer Service for availability and colors.



Restricted Bundle

Std. Cat. No.	Cat. No. Bulk	Material	Color	Bundle Diameter		Length		Width		Minimum Loop Tensile		Tab Height		Std. Pkg.	Bulk Pkg.
				Inch	(mm)	Inch	(mm)	Inch	(mm)	LB	(kg)	Inch	(mm)		
L-5-30TB-3-M		Nylon	Orange	21/32 - 1 1/4	(17 - 32)	5.6	(142)	.130	(3)	30	(13.6)	.062	(1.58)	-	1000

• Recommended for tote-box, security and temporary applications.
 • Use QC-100, L-200, L-400-C, or ERG-299 Installation Tools on Low setting. Consult Customer Service for availability and colors.



Releasable Ties

Std. Cat. No.	Cat. No. Bulk	Material	Color	Bundle Diameter		Length		Width		Minimum Loop Tensile		Std. Pkg.	Bulk Pkg.
				Inch	(mm)	Inch	(mm)	Inch	(mm)	LB	(kg)		
L-5-50R-9-C	L-5-50R-9-D	Nylon	Natural	1/8 - 1 1/4	(3 - 32)	5.9	(150)	.295	(7.5)	50	(22.7)	100	500
L-5-50R-0-C	L-5-50R-0-D	Nylon	Black	1/8 - 1 1/4	(3 - 32)	5.9	(150)	.295	(7.5)	50	(22.7)	100	500
L-8-50R-9-C	L-8-50R-9-D	Nylon	Natural	1/8 - 2	(3 - 51)	7.8	(198)	.295	(7.5)	50	(22.7)	100	500
L-8-50R-0-C	L-8-50R-0-D	Nylon	Black	1/8 - 2	(3 - 51)	7.8	(198)	.295	(7.5)	50	(22.7)	100	500
L-10-50R-9-C	L-10-50R-9-D	Nylon	Natural	1/8 - 3	(3 - 76)	11.265	(286)	.295	(7.5)	50	(22.7)	100	500
L-10-50R-0-C	L-10-50R-0-D	Nylon	Black	1/8 - 3	(3 - 76)	11.265	(286)	.295	(7.5)	50	(22.7)	100	500

• Push Button Release.
 • Use QC-100, L-200, L-400-C, ERG-297, ERG-299 Installation Tool. Consult Customer Service for availability and colors.

Sample Catalog Order:

L 4 18 9 C = Natural Color Type

Color Table

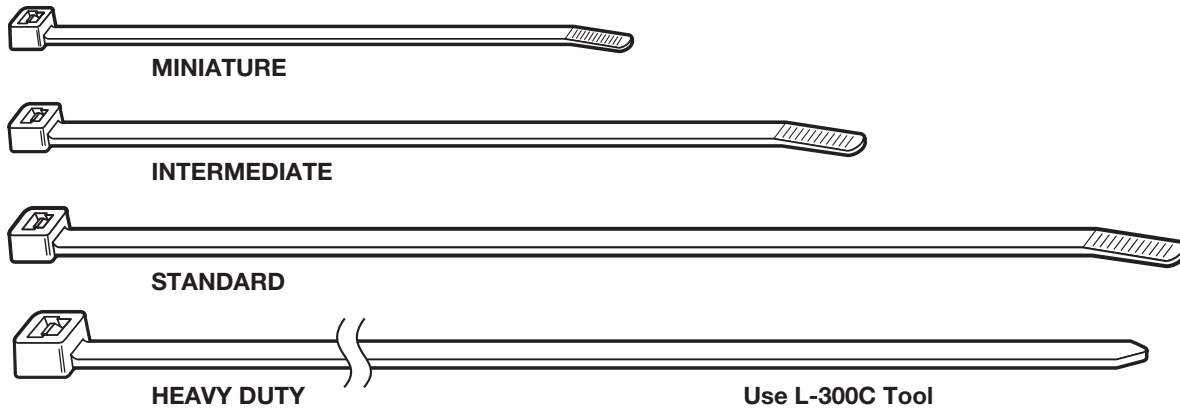
0 - Black (Outdoor)	5 - Green	11 - Fluorescent Pink
1 - Brown	6 - Blue	16 - Fluorescent Orange
2 - Red	7 - Purple	17 - Fluorescent Yellow
3 - Orange	8 - Gray	18 - Fluorescent Green
4 - Yellow	9 - Natural	20 - Fluorescent Blue

Catamount®

Cable Ties

Catamount® Military Specification Ties

The following cable ties meet the stringent requirements of military specifications. To locate ties that meet a particular specification, refer to the chart below.



Mil-Spec Cable Ties

Mil-Spec	Std. Cat. No.	Bulk Cat. No.	Material	ID Code	Tool Setting	Std. Pkg.	Bulk Pkg.
MS-3367-2-9	L-14-50-9-C	L-14-50-9-D	Natural Nylon	STD	6 to 8	100	500
MS-3367-2-0	L-14-50-0-C	L-14-50-0-D	UV Black Nylon	STD	6 to 8	100	500
MS-3367-3-9	L-14-120-9-C	-	Natural Nylon	HVY	5 to 8	100	-
MS-3367-3-0	L-14-120-0-C	-	UV Black Nylon	STD	6 to 8	100	-
MS-3367-4-9	L-4-18-9-C	-	Natural Nylon	MIN	1 to 3	100	-
MS-3367-4-0	L-4-18-0-C	-	UV Black Nylon	MIN	1 to 3	100	-
MS-3367-5-9	L-5-30-9-C	-	Natural Nylon	INT	3 to 5	100	-
MS-3367-5-0	L-5-30-0-C	-	UV Black Nylon	INT	3 to 5	100	-
MS-3367-7-9	L-11-50-9-C	L-11-50-9-D	Natural Nylon	STD	6 to 8	100	500
MS-3367-7-0	L-11-50-0-C	L-11-50-0-D	UV Black Nylon	STD	6 to 8	100	500
MS-3367-6-9	L-28-120-9-L	-	Natural Nylon	HVY	5 to 8	50	-
MS-3367-6-0	L-28-120-0-L	-	UV Black Nylon	HVY	5 to 8	50	-

• Use L-200, L-400-C, or ERG-297 Installation Tools

• Catamount® FSCM 65664 QPL Listed

• **UL File No. E151267**
Electrical Construction Materials
Spiral Wrap

• **UL File No. E132609**
Wire Connectors

• **UL File No. E107819**
Fabricated Parts
Fasteners and Hardware for
Material Traceability

To assure that military labeling requirements are met when ordering MIL-SPEC Cable Ties, please reference the desired MS number when ordering.

Sample Catalog Order:

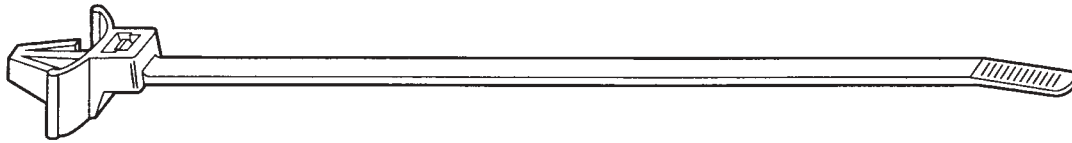
L 4 18 9 C = Natural Color Type

Color Table

0 – Black (Outdoor)	5 – Green	11 – Fluorescent Pink
1 – Brown	6 – Blue	16 – Fluorescent Orange
2 – Red	7 – Purple	17 – Fluorescent Yellow
3 – Orange	8 – Gray	18 – Fluorescent Green
4 – Yellow	9 – Natural	20 – Fluorescent Blue

Catamount®

Cable Ties



Push Mount Cable Ties

Std. Cat. No.	Cat. No. Bulk	Tie Color	Stripe Color	Bundle Diameter		Length		Width		Minimum Loop Tensile		Std. Pkg.	Bulk Pkg.
				Inch	(mm)	Inch	(mm)	Inch	(mm)	LB	(kg)		
L-5-50PM-9-C	L-5-50PM-9-D	Nylon	Natural	1/16 - 1	(2-25)	5.8	(147)	.187	(4.76)	50	(22.7)	100	500
L-5-50PM-0-C	L-5-50PM-0-D	Nylon	Black	1/16 - 1	(2-25)	5.8	(147)	.187	(4.76)	50	(22.7)	100	500
L-7-50PM-9-C	L-7-50PM-9-D	Nylon	Natural	1/16 - 1 3/4	(2-44)	8.2	(208)	.187	(4.76)	50	(22.7)	100	500
L-7-50PM-0-C	L-7-50PM-0-D	Nylon	Black	1/16 - 1 3/4	(2-44)	8.2	(208)	.187	(4.76)	50	(22.7)	100	500

- For use in .250 mounting hole.
 - Maximum panel thickness .105.
- Consult Customer Service for availability and colors.

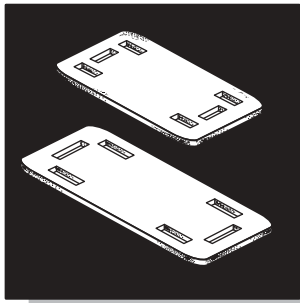
Releasable Push Mount Cable Ties

Std. Cat. No.	Cat. No. Bulk	Tie Color	Stripe Color	Bundle Diameter		Length		Width		Minimum Loop Tensile		Std. Pkg.	Bulk Pkg.
				Inch	(mm)	Inch	(mm)	Inch	(mm)	LB	(kg)		
L-5-50PMR-9-C	L-5-50PMR-9-D	Nylon	Natural	1/16 - 1	(2-25)	5.8	(147)	.187	(4.76)	50	(22.7)	100	500
L-5-50PMR-0-C	L-5-50PMR-0-D	Nylon	Black	1/16 - 1	(2-25)	5.8	(147)	.187	(4.76)	50	(22.7)	100	500
L-7-50PMR-9-C	L-7-50PMR-9-D	Nylon	Natural	1/16 - 1 3/4	(2-44)	8.2	(208)	.187	(4.76)	50	(22.7)	100	500
L-7-50PMR-0-C	L-7-50PMR-0-D	Nylon	Black	1/16 - 1 3/4	(2-44)	8.2	(208)	.187	(4.76)	50	(22.7)	100	500

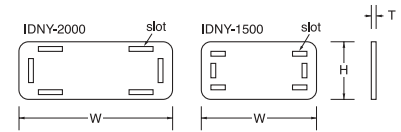
- For use in .250 mounting hole.
 - Maximum panel thickness .105.
- Consult Customer Service for availability and colors.

Catamount®

Cable Ties



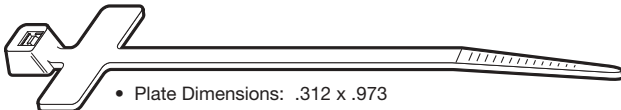
- Two tags for marking bundles to 9" diameters.
- Run ties through opposing mounting holes lengthwise or across the height of tags.
- IDNY-1500 accepts ties to 50 pound tensile; IDNY-2000 accepts ties to 120 pound tensile.
- Stocked in 6/6 Natural Nylon.
- UL Flammability 94 V-2.
- Non-Conductive, Non-Corrosive; resistant to fuels, lubricants and most chemicals.



Identification Tags

Std. Cat. No.	Bulk Cat. No.	H Height		W Width		T Thickness		Slot Height		Slot Width		Std. Pkg.	Bulk Pkg.
		Inch	(mm)	Inch	(mm)	Inch	(mm)	Inch	(mm)	Inch	(mm)		
-	IDNY-1500-9-M	.745	(18.92)	1.500	(38.08)	.015	(.381)	.090	(2.29)	.200	(5.08)	-	1000
-	IDNY-2000-9-M	.745	(18.92)	2.000	(50.78)	.025	(.653)	.113	(2.87)	.336	(8.53)	-	1000
Tolerance ±		.015	(.381)	.030	(.762)	.005	(.127)	-	.010	(.254)	-	-	-

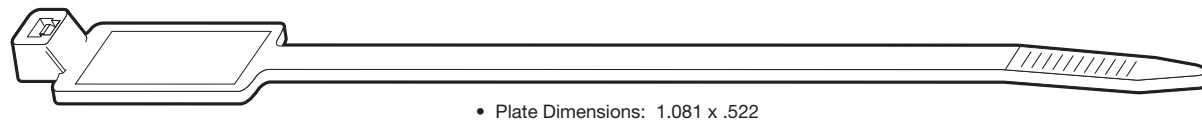
• Matte finish for sharp legends.
Consult Customer Service for availability and colors.



Identification Ties

Std. Cat. No.	Bulk Cat. No.	Material	Color	Max. Bundle Diameter		Length		Width		Minimum Loop Tensile		Std. Pkg.	Bulk Pkg.
				Inch	(mm)	Inch	(mm)	Inch	(mm)	LB	(kg)		
L-4-18ID-9-C	L-4-18ID-9-M	Nylon	Natural	3/4	(19)	4.0	(102)	.100	(2.54)	18	(8.2)	100	1000

• Use QC-100, L-200 or L-400-C Installation Tool.
Consult Customer Service for availability and colors.



Std. Cat. No.	Bulk Cat. No.	Material	Color	Max. Bundle Diameter		Length		Width		Minimum Loop Tensile		Std. Pkg.	Bulk Pkg.
				Inch	(mm)	Inch	(mm)	Inch	(mm)	LB	(kg)		
L-7-50ID-9-C	L-7-50ID-9-M	Nylon	Natural	1 3/4	(44)	7.875	(200)	.183	(4.65)	50	(22.7)	100	1000

• Use QC-100, L-200 or L-400-C Installation Tool.
Consult Customer Service for availability and colors.

Marking Pens



Cat. No.	Color Ink	Std. Pkg.
WT163M-1	Black Marking Pen	1
WT163M-3	Red Marking Pen	1

Catamount®

Cable Ties



• Striped ties are used to identify wire in bundles.

Striped Ties

Std. Cat. No.	Tie Color	Stripe Color	Diameter		Length		Width		Loop Tensile		Std. Pkg.
			Inch	(mm)	Inch	(mm)	Inch	(mm)	LB	(kg)	
L-4-18-1/10-L	Brown	White	1/16 - 7/8	(2 - 16)	4.0	(102)	.100	(3)	18	(8.2)	50
L-4-18-1/2-L	Brown	Red	1/16 - 7/8	(2 - 16)	4.0	(102)	.100	(3)	18	(8.2)	50
L-4-18-1/0-L	Brown	Black	1/16 - 7/8	(2 - 16)	4.0	(102)	.100	(3)	18	(8.2)	50
L-4-18-1/4-L	Brown	Yellow	1/16 - 7/8	(2 - 16)	4.0	(102)	.100	(3)	18	(8.2)	50
L-4-18-1/7-L	Brown	Purple	1/16 - 7/8	(2 - 16)	4.0	(102)	.100	(3)	18	(8.2)	50
L-4-18-3/10-L	Orange	White	1/16 - 7/8	(2 - 16)	4.0	(102)	.100	(3)	18	(8.2)	50
L-4-18-3/2-L	Orange	Red	1/16 - 7/8	(2 - 16)	4.0	(102)	.100	(3)	18	(8.2)	50
L-4-18-3/0-L	Orange	Black	1/16 - 7/8	(2 - 16)	4.0	(102)	.100	(3)	18	(8.2)	50
L-4-18-3/4-L	Orange	Yellow	1/16 - 7/8	(2 - 16)	4.0	(102)	.100	(3)	18	(8.2)	50
L-4-18-3/7-L	Orange	Purple	1/16 - 7/8	(2 - 16)	4.0	(102)	.100	(3)	18	(8.2)	50
L-4-18-5/10-L	Green	White	1/16 - 7/8	(2 - 16)	4.0	(102)	.100	(3)	18	(8.2)	50
L-4-18-5/2-L	Green	Red	1/16 - 7/8	(2 - 16)	4.0	(102)	.100	(3)	18	(8.2)	50
L-4-18-5/0-L	Green	Black	1/16 - 7/8	(2 - 16)	4.0	(102)	.100	(3)	18	(8.2)	50
L-4-18-5/4-L	Green	Yellow	1/16 - 7/8	(2 - 16)	4.0	(102)	.100	(3)	18	(8.2)	50
L-4-18-5/7-L	Green	Purple	1/16 - 7/8	(2 - 16)	4.0	(102)	.100	(3)	18	(8.2)	50
L-4-18-6/10-L	Blue	White	1/16 - 7/8	(2 - 16)	4.0	(102)	.100	(3)	18	(8.2)	50
L-4-18-6/2-L	Blue	Red	1/16 - 7/8	(2 - 16)	4.0	(102)	.100	(3)	18	(8.2)	50
L-4-18-6/0-L	Blue	Black	1/16 - 7/8	(2 - 16)	4.0	(102)	.100	(3)	18	(8.2)	50
L-4-18-6/4-L	Blue	Yellow	1/16 - 7/8	(2 - 16)	4.0	(102)	.100	(3)	18	(8.2)	50
L-4-18-6/7-L	Blue	Purple	1/16 - 7/8	(2 - 16)	4.0	(102)	.100	(3)	18	(8.2)	50
L-4-18-8/10-L	Gray	White	1/16 - 7/8	(2 - 16)	4.0	(102)	.100	(3)	18	(8.2)	50
L-4-18-8/2-L	Gray	Red	1/16 - 7/8	(2 - 16)	4.0	(102)	.100	(3)	18	(8.2)	50
L-4-18-8/0-L	Gray	Black	1/16 - 7/8	(2 - 16)	4.0	(102)	.100	(3)	18	(8.2)	50
L-4-18-8/4-L	Gray	Yellow	1/16 - 7/8	(2 - 16)	4.0	(102)	.100	(3)	18	(8.2)	50
L-4-18-8/7-L	Gray	Purple	1/16 - 7/8	(2 - 16)	4.0	(102)	.100	(3)	18	(8.2)	50

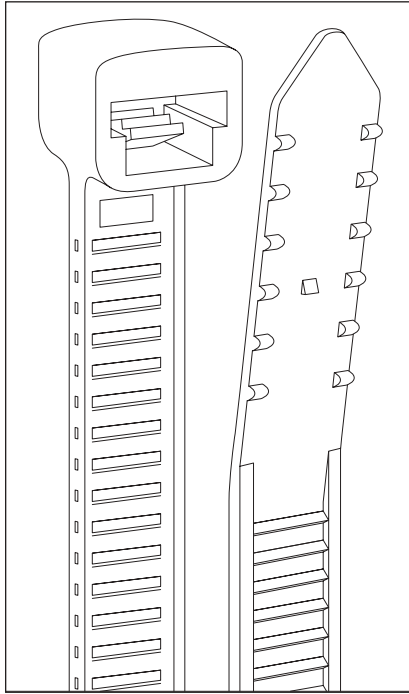
• Also available in bulk packages of 1000.

• Use QC-100, L-200, L-400-C, or ERG-299 Installation Tool.

Consult Customer Service for availability and colors.

T&B

Cable Ties



- The integrally formed nylon pawl combines low insertion and high locking strength
- A rounded, low-profile head makes for less snags
- Tails have an improved two-sided finger grip design that helps the operator grasp and pull ties snug
- “Sure Grip” tab keeps the tail from popping out while being threaded, then holds it securely for final tightening by hand or tool
- Quick, easy pull through increases productivity, reduces operator fatigue

From one end to the other, T&B Cable Ties fit the needs of OEMs

Designed with OEMs in mind, this new series of competitively priced T&B cable ties holds down costs and speeds up cable fastening. Our all-nylon design lowers installation costs and provides features to ease fastening for harness fabrication and wire bundling in the manufacturing environment.

T&B cable ties are made of nylon 6/6 and perform well in most applications in temperatures ranging from 185°F to -40°F. The smooth edges are designed to prevent damage to wire insulation, reducing the opportunity for shorting, and tails are “turned up” for fast assembly. T&B cable ties come in natural or outdoor weatherable black, and custom colours and options are available.

T&B cable ties may be fastened with standard Thomas & Betts tying tools. All your favorite Ty-Rap® mounting bases and accessories may be used with T&B cable ties. For harsh industrial environments, use our “grip of steel”™ Ty-Rap cable ties with the unique stainless steel barb. Ty-Rap and T&B cable ties combine to offer the most complete package of cable ties and accessories for the fastening market.

T&B cable ties come in large poly bags for convenient inventory and easy access at the manufacturing site. Call your local Thomas & Betts distributor today and find out how well T&B cable ties can fit your needs, from one end to the other.

T&B Cable Ties

Cat. No.	Min. Tensile Strength (in lb)	Military Standard Part No.	Tie Length (in.)	Max. Bundle Diameter (in.)	Width (in.)	Std. Pkg. (pieces)
TY075-18	18	MS3367-4	3.60	.75	.095	1000
TY125-18	18		5.34	1.25	.095	1000
TY125-40	40	MS3367-5	5.60	1.25	.140	1000
TY200-18	18		7.75	2.00	.095	1000
TY200-40	40		8.00	2.00	.140	1000
TY200-120	120		8.63	2.00	.299	500
TY300-40	40		11.40	3.00	.140	1000
TY175-50	50	MS3367-1	7.30	1.75	.184	1000
TY300-50	50	MS3367-7	11.40	3.00	.184	1000
TY400-50	50	MS3367-2	14.30	4.00	.184	1000
TY400-120	120	MS3367-3	14.30	4.00	.301	500

Add suffix (-20) for cosmetic black, non-weatherable material.

Outdoor Weatherable (black)

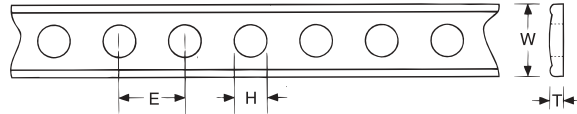
Cat. No.	Min. Tensile Strength (in lb)	Military Standard Part No.	Tie Length (in.)	Max. Bundle Diameter (in.)	Width (in.)	Std. Pkg. (pieces)
TY075-18X	18	—	3.60	.75	.095	1000
TY125-18X	18	—	5.34	1.25	.095	1000
TY125-40X	40	—	5.60	1.25	.140	1000
TY200-18X	18	—	7.75	2.00	.095	1000
TY200-40X	40	—	8.00	2.00	.140	1000
TY200-120X	120	—	8.63	2.00	.299	500
TY300-40X	40	—	11.40	3.00	.140	1000
TY175-50X	50	—	7.30	1.75	.184	1000
TY300-50X	50	—	11.40	3.00	.184	1000
TY400-50X	50	—	14.30	4.00	.184	1000
TY400-120X	120	—	14.30	4.00	.301	500

Catamount®

Cable Ties



- Extruded in 5 widths with 8 mounting hole diameters for use with a variety of standard and custom fasteners.
- Extrusion grade Black Nylon.
- Hole spacing allows for greater flexibility in meeting bundle diameter requirements.
- Strapping provides a wide range of tensile strengths depending on mounting method (S2NY-096-0 tested at 50 lbs. with BTNY-096).
- Non-Conductive, Non Corrosive; resistant to fuels, lubricants and most chemicals.



Strapping

Item Number	W Width		T Thickness		H Hole		E Spacing		Quantity
	Inch	(mm)	Inch	(mm)	Inch	(mm)	Inch	(mm)	
S2NY-096-0-C	.281	(7.13)	.032	(.813)	.096	(2.44)	.187	(4.75)	100 foot rolls
S4NY-128-0-C	.375	(9.52)	.040	(1.02)	.128	(3.25)	.312	(7.92)	100 foot rolls
S4NY-140-0-C	.375	(9.52)	.040	(1.02)	.140	(3.56)	.312	(7.92)	100 foot rolls
S4NY-167-0-C	.375	(9.52)	.040	(1.02)	.167	(4.24)	.312	(7.92)	100 foot rolls
S4NY-167X-0-C	.375	(9.52)	.040	(1.02)	.167	(4.24)	.218	(5.54)	100 foot rolls
S6NY-000-0-C	.500	(12.70)	.060	(1.52)	N/A	N/A	N/A	N/A	100 foot rolls
S6NY-167-0-C	.500	(12.70)	.060	(1.52)	.167	(4.24)	.390	(9.90)	100 foot rolls
S6NY-203-0-C	.500	(12.70)	.060	(1.52)	.203	(5.16)	.390	(9.90)	100 foot rolls
S6NY-203X-0-C	.500	(12.70)	.060	(1.52)	.203	(5.16)	.281	(7.14)	100 foot rolls
S7NY-265-0-C	.625	(15.87)	.070	(1.78)	.265	(6.73)	.500	(12.70)	100 foot rolls
S7NY-265X-0-C	.625	(15.87)	.070	(1.78)	.265	(6.73)	.375	(9.52)	100 foot rolls
S7NY-281-0-C	.625	(15.87)	.070	(1.78)	.281	(7.14)	.500	(12.70)	100 foot rolls
S9NY-000-0-C	.875	(22.22)	.070	(1.78)	N/A	N/A	N/A	N/A	100 foot rolls
S9NY-203-0-C	.875	(22.22)	.070	(1.78)	.203	(5.16)	.500	(12.70)	100 foot rolls
S9NY-265-0-C	.875	(22.22)	.070	(1.78)	.265	(6.73)	.500	(12.70)	100 foot rolls
S9NY-390-0-C	.875	(22.22)	.070	(1.78)	.390	(9.90)	.625	(15.87)	100 foot rolls

Strapping Accessories Reference

Strapping Number	Strap-Tite Buckle	Mounting Tab	Mounting Cradle	Stud Buttons	Machine Screw
S2NY-096-0-C	N/A	M4NY-203-0-D	C4NY-203-0-D	BTNY-096-0-D	#2
S4NY-128-0-C	N/A	M4NY-203-0-D	C4NY-203-0-D	N/A	#5
S4NY-140-0-C	N/A	M4NY-203-0-D	C4NY-203-0-D	N/A	#6
S4NY-167-0-C	B4NY-167-0-D	M4NY-203-0-D	C4NY-203-0-D	BTNY-167-0-D	#8
S4NY-167X-0-C	B4NY-167-0-D	M4NY-203-0-D	C4NY-203-0-D	BTNY-167-0-D	#8
S6NY-000-0-C	N/A	M6NY-265-0-D	N/A	N/A	N/A
S6NY-167-0-C	N/A	M6NY-265-0-D	N/A	N/A	#8
S6NY-203-0-C	B6NY-203-0-D	M6NY-265-0-D	N/A	BTNY-203-0-D	#10
S6NY-203X-0-C	B6NY-203-0-D	M6NY-265-0-D	N/A	BTNY-203-0-D	#10
S7NY-265-0-C	B7NY-265-0-D	M7NY-328-0-D	N/A	BTNY-265-0-D	1/4
S7NY-265X-0-C	B7NY-265-0-D	M7NY-328-0-D	N/A	BTNY-265-0-D	1/4
S7NY-281-0-C	N/A	M7NY-328-0-D	N/A	N/A	1/4
S9NY-203-0-C	N/A	N/A	N/A	BTNY-203-0-D	#10
S9NY-265-0-C	N/A	N/A	N/A	BTNY-265-0-D	1/4
S9NY-390-0-C	N/A	N/A	N/A	N/A	3/8