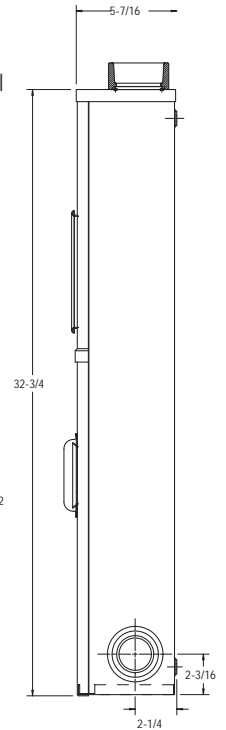
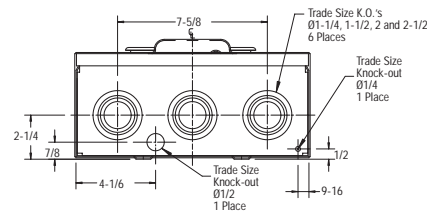


COMBINATION METER SOCKET WITH W/O BREAKER • 200 AMP. 120/240 VOLTS MAX.



Product Specifications

- Conductor range :1 AWG-250 kcmil
- Aluminum tunnel type connectors
- Suitable for 120/240 volts single phase service entrance for mobile homes, trailers, temporary services, recreational parks and other commercial and residential locations
- Factory installed 2 pole circuit breaker; 10000 rms amperes interrupting capacity
- Adjustable bracket now available for field installation to accept Square D and Cutler Hammer breakers, catalogue number **C03417M-1-FG** (see page 37)
- "QJ" Type Siemens breaker
- Supplied with screw type ring
- Weatherproof Type 3R enclosure
- **Primarily used in:** All provinces



Dimensions are in inches

Ordering Information

CATALOGUE NUMBER	DESCRIPTION	DIMENSIONS (inches)			WEIGHT EACH	
		H	W	D	lb	kg
4 JAW						
C02	Overhead 200 Amp. without breaker	32-3/4	11-13/16	5-7/16	28	12.7
C02-125	Overhead c/w 125 Amp. breaker	32-3/4	11-13/16	5-7/16	30	13.6
C02-125HI	Overhead c/w 125 Amp. 22KA Siemens breaker	32-3/4	11-13/16	5-7/16	30	13.6
C02-150	Overhead c/w 150 Amp. breaker	32-3/4	11-13/16	5-7/16	30	13.6
C02-200	Overhead c/w 200 Amp. breaker	32-3/4	11-13/16	5-7/16	30	13.6
C02-200HI	Overhead c/w 200 Amp. 22KA Siemens breaker	32-3/4	11-13/16	5-7/16	30	13.6
C02-200G	Underground c/w 200 Amp. breaker and gutter	32-3/4	11-13/16	5-7/16	32.6	14.6
C02-200GM	Overhead c/w 200 Amp. Siemens breaker and gutter and adjustable bracket	32-3/4	11-13/16	5-7/16	30	13.6
C02-G	Underground NG breaker c/w gutter	32-3/4	11-13/16	5-7/16	28	12.7

Approved for copper or aluminum.

COMBINATION METER BREAKER AND SPLITTER - 200AMP • SINGLE PHASE 120/240 VOLT SERVICE

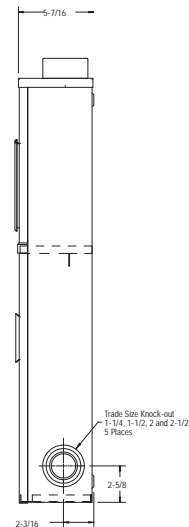
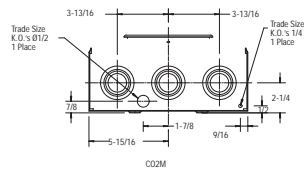
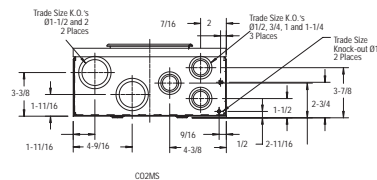


Product Specifications

- Conductor Range: 6 AWG-250 kcmil
- Cutler Hammer breaker to be field-installed, Type ED, EDH
- Adjustable breaker bracket to fit Seimens, SD and Cutler Hammer breakers (available for field installation **Cat. No.: C03417M-1-FG**)
- *With new C02FB braid connector (also available for field installation **Cat. No.: C02FB-KIT**)

C02M	Provision for pole mounting meter and breaker enclosure
C02MS	Provision for pole mounting meter, breaker and splitter enclosure
C02MS-2446	Provision for pole mounting plus breaker c/w service entrance cable connector meter and splitter enclosure
C02MSU	Pedestal type for padmount applications meter and provision for breaker c/w splitter enclosure

Mounting brackets are now shipped unassembled inside each unit where applicable



Dimensions are in inches

CATALOGUE NUMBER	DESCRIPTION	DIMENSIONS (inches)			WEIGHT EACH	
		H	W	D	lb	kg
4 JAW						
C02M*	Combination overhead-underground	30-5/8	12	5-7/16	28	12.7
C02MS*	Combination overhead-underground	39-3/8	12	5-7/16	42	19
C02MS-2446*	Combination overhead-underground	39-3/8	12	5-7/16	44	19.5
C02MSB-200	Combination overhead-underground	39-3/8	12	5-3/8	47	21.3
C02MSU*	Underground c/w 200 amp. breaker and neutral bar	60	12	5-3/8	59	26.8

Approved for copper or aluminum.