

**"ALL IN ONE" TRANSFORMER RATED METER SOCKETS • 400 AMP. 600 VOLTS MAX.**



**Note:** Photo is of an installed meter socket; current transformers are not included.

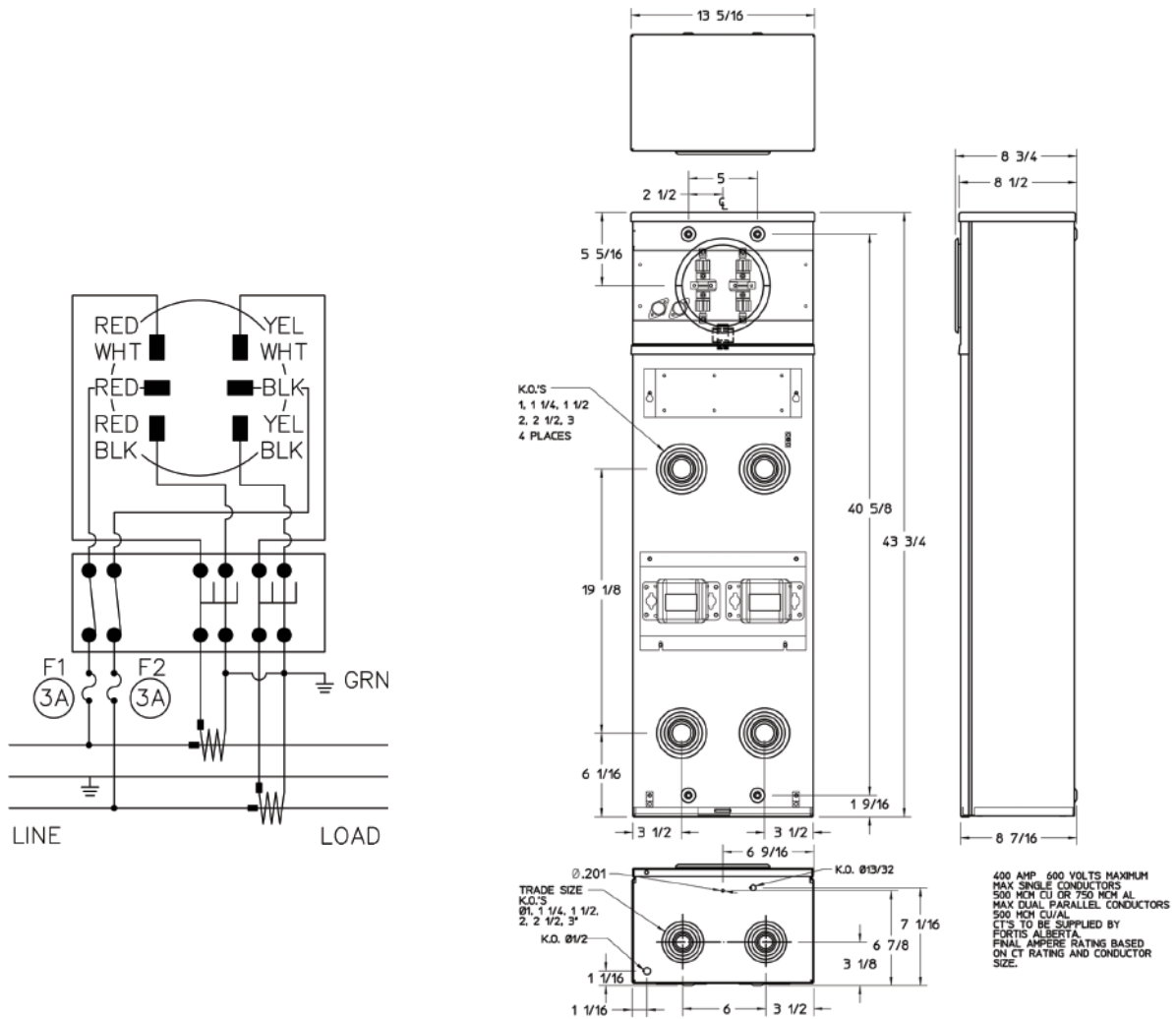
### Product Specifications

- Permanent red nameplate affixed to front cover warns that removal of meter does not isolate the load terminals; also warning to short circuit current transformer (secondary) before removal of meter.
- Max. single conductor 500 kcmil CU or 750 kcmil AL. Max dual parallel conductors 500 kcmil CU/AL.
- Meter socket configuration for 6 jaws.
- Complete with 6 pole test switch.
- Complete with 2 fuseholders and 3 Amp. 32 volt fuses.
- Load and line side termination at discretion of utility.
- Installation of current transformer at discretion of utility.
- Two 1", 1-1/4", 1-1/2", 2", 2-1/2" and 3" bottom K.O.'s.
- Weatherproof 3R enclosure.
- **Primarily used in:** Alberta

# FA4B-6T



“ALL IN ONE” TRANSFORMER RATED METER SOCKETS • 400 AMP. 600 VOLTS MAX.



CATALOGUE NUMBER	DESCRIPTION	DIMENSIONS (inches)		WEIGHT EACH	
		W	D	lb	kg
<b>FA4B-6T</b>	Underground c/w 6 pole test switch	13-5/16	8-7/16	50	22.67

Approved for copper or aluminum