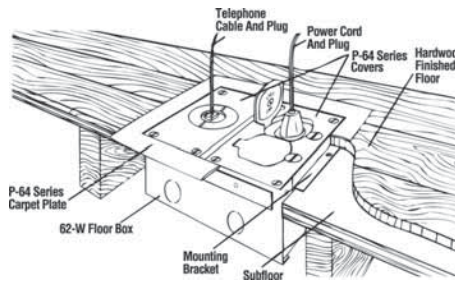
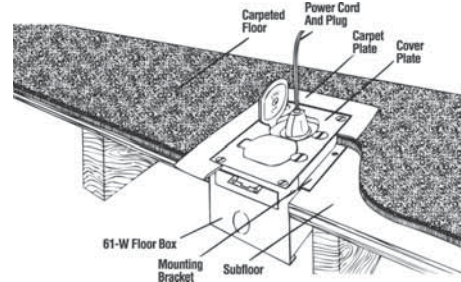


Stamped Steel Floor Box for Use in Wood Floors

New Construction (New Work) Applications



Retro-fit Construction (Old Work) Application



Stamped Steel Floor Box Line for Use in Wood Floors

| Cat. No. | Dimensions | | | Adjustment* | Capacity (cu. in.) | Knockouts | Std. Ctn. |
|----------|------------|----------|----------|-------------|--------------------|---------------------------------|-----------|
| | A | B | C | | | | |
| 61-W | 5-5/16" | 3-11/16" | 2-15/16" | 13/16" | 31 | Sides 2 – 1/2 Bottom 2 – 1/2 | 4 |
| 62-W | 5-5/16" | 7" | 2-15/16" | 13/16" | 30 per group | Sides 4 – 1/2 Bottom 4 – 1/2 | 2 |

Material: .062 Galvanized Steel

Accessories

Carpet Plate: 61-W uses P-64-CP Brass or P64PCP-xxx Non-metallic.

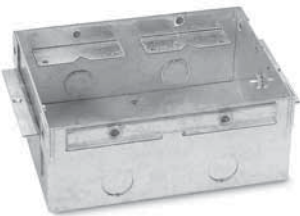
62-W uses P-64-2G-CP Brass or P64P-2GCP-xxx Non-metallic.

Covers: Both 61-W and 62-W can utilize any P-64 series brass or P64P-URC series Non-metallic Covers.

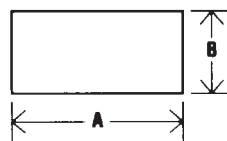
Notes: New work applications only.

Cover and Carpet plates are ordered separately. See P64 series on page 43
Both the 61-W and 62-W come standard with a stamped steel protective cover.
New Work Mounting Brackets and Old Work Mounting Brackets come bagged inside box.

62W comes with partition to separate high and low voltage.



61-W



62-W

