

Flush Service Floor Boxes – Outlets at Floor Level

600 Series

- Round, Cast Iron
- Tile flange included
- P60 Series carpet flanges
- P60 Series covers



see pages 22 to 24

68 Series

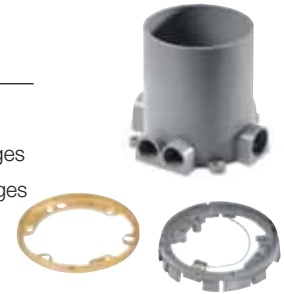
- Round, Stamped Steel
- Tile flange included
- P60 Series carpet flanges
- P60 Series covers



see pages 22 to 24

68P Series

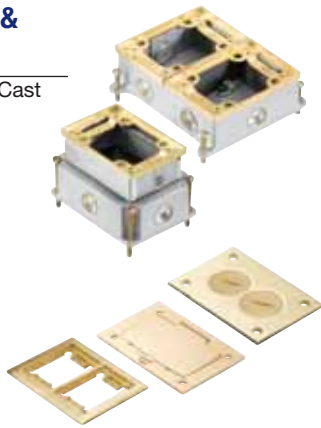
- Round, Non-Metallic
- 68-PAR adjusting ring
- 68P-FL Series tile flanges
- P60 Series carpet flanges
- P60 Series covers
- 68R Recessed covers



see pages 38 to 41

640 Series & 840 Series

- Rectangular, Cast Iron
- Tile flanges included
- P64 Series carpet flanges
- P64 Series covers
- Up to 2" conduit
- Up to 4-gang



see pages 30 to 33

740 Series

- Rectangular, Stamped Steel
- 640P Series tile & carpet flanges
- P64 Series covers
- Up to 3-gang



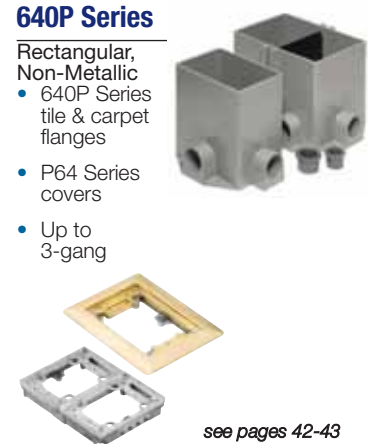
see pages 34 to 37

60 Series

- Rectangular, Stamped Steel
- For wood sub-floors
- P64 Series carpet flanges
- P64 Series covers

640P Series

- Rectangular, Non-Metallic
- 640P Series tile & carpet flanges
- P64 Series covers
- Up to 3-gang

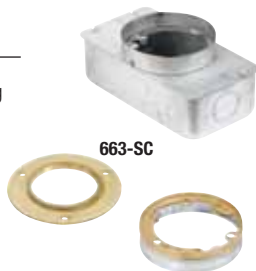


see pages 42-43

Concealed Service Floor Boxes – Outlets Below Floor Level

663 Series

- 2 Compartment
- P62-TAR adjusting ring & tile flange
- P60 Series carpet flanges
- P60-3B & P62 Series covers



see pages 10-11

664 Series

- 2 Compartment
- 664 Series covers (tile & carpet)
- 664-CI: cast iron
- 664-S: shallow 2-7/8" height



see pages 12-13

665 Series

- 4 Compartment
- 665 Series covers (tile & carpet)
- 665-CI: cast iron



see pages 14 to 17

668 Series

- 4 Compartment
- 668 Series covers (tile & carpet)
- 668 Series tile flanges
- Shallow 2-1/2" height



see pages 20 - 21

667 Series

- 4 Compartment
- 667 Series covers (tile & carpet)
- 1 Compartment = 2 Gangs



see page 18



Poke Through Systems

Flush Service



see pages 52 to 56

FPT4 Series

- 4" Core
- 4 power + 4 communication outlets
- Also "2 + 6" or 8 communications
- Brass or aluminum cover



see page 57

FPT3 Series

- 3" Core
- Duplex receptacle + 2 communication outlets
- Brass or aluminum cover



see page 58

FPT Series

- 3" Core
- Duplex receptacle
- Brass, aluminum or non-metallic cover

Furniture Feed



see pages 59-60

FFPT4 Series

- 4" Core
- 3/4" hub for power & 1-1/4" hub for communications
- Brass or aluminum cover



see pages 61-62

FFPT3 Series

- 3" Core
- Concentric 2" & 1-1/4" hub for power or communications
- Brass or aluminum cover



see page 63

FPT Series

- 3" Core
- (2) 1/2" hubs & (1) 3/4" hub for power and/or communication
- Non-metallic cover

Pedestal



see page 64

FPT Series

- 3" Core
- 2 compartment or 4 compartment
- Aluminum cover

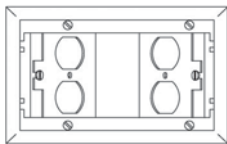
Access Floor Modules (AFMs) for Raised Floors

AFM-2 Series

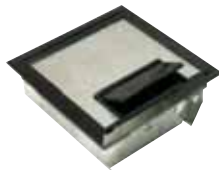


see page 45

- 2 compartment

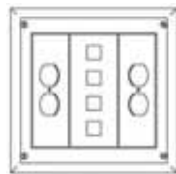


AFM-4 Series

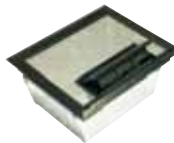


see page 46

- 3 compartment

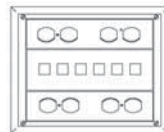


AFM-6 Series

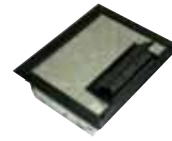


see page 47

- 3 compartment

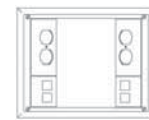


AFM-6S-2 Series

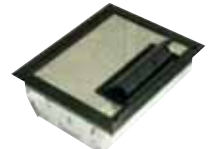


see page 48

- 4 compartment
- 2-1/2" depth for shallow raised floors

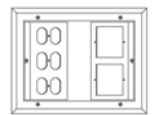


AFM-6V Series

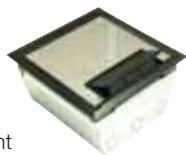


see page 49

- 2 compartment
- Accepts standard wall plates for data jacks

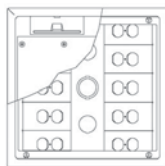


AFM-8 Series



see page 50

- 10 compartment



GAB Series

- GAB-4 & GAB-6: cast iron
- GAB-8: stamped steel
- For use with AFM-4, AFM-6, & AFM-8 in concrete applications



GAB-4, GAB-6



GAB-8

see page 51

