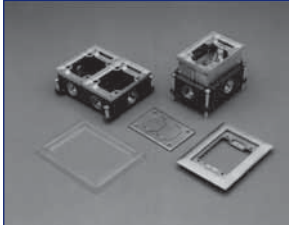


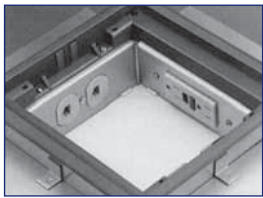
## Floor Box Systems



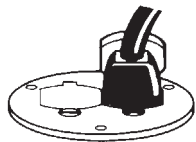
840, 640 Series—Flush Multiple Service

The aesthetic and technical needs of today's buildings are as diverse as the equipment that fills them. Small wonder, then, that floor boxes can continue to solve the needs of today and the future as they did in the early 1900's when they were invented. They are still a contemporary, capable and cost-effective wire management system. Steel City, a pioneer in both the design and applications of floor boxes since 1904, invites you to discover, or rediscover, the possibilities.

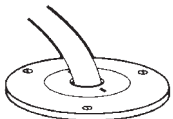
## Three Levels of Service



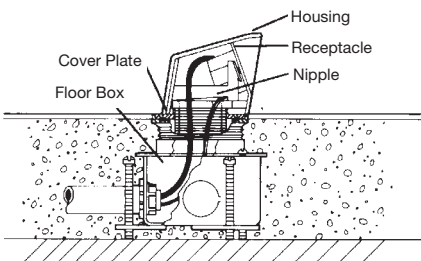
665-SC



P60 Series—Power Application



P60 Series—Communication/Data Application



664 Series

### Concealed Service

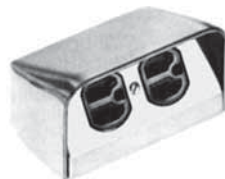
All power, communications and data devices are hidden below the finish floor level.



600 Series

### Flush Service

All power devices are mounted at the finish floor level.

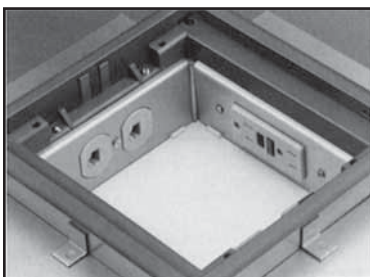


SFH-40 Series

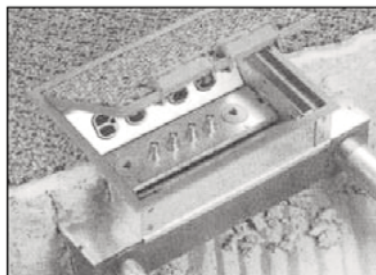
### Above Floor Service

All power devices are mounted in a service fitting head above the finish floor.

## Multiple Service Capabilities Power, Communications and Data in One Unit



665-SC



AFM-6



665-SC

## Building Design Flexibility—Floor Boxes Designed for the Following Applications:



**71W Series**  
(complete kit)



**664-SC**  
Slab on Grade  
Steel Deck  
With Concrete Pour



**664-CI**  
Slab on Grade  
Steel Deck  
With Concrete Pour



**664-S**  
Two Pour Concrete



**61-W**  
Wood Floor



**62-W**  
Wood Floor



**672**  
Wood Floor

## New Construction or Retrofit Applications

