

Low Voltage Brackets

Steel

IBERVILLE®

Technical Specifications

Features

- Eliminates the need for an electrical box when installing low voltage Class 2 wiring.
- For old work or new work.
- Installs easily with a drywall saw and screwdriver.



CIMB-1



WBF-1

Cat. No.	Description
Low Voltage Mounting Brackets	
CIMB-1	Mounting bracket that provides quick installation of low voltage class 2 communication outlets. Raised 1/2". Positioning tabs ensure straight installation.
WBF-1	Low voltage wall bracket.

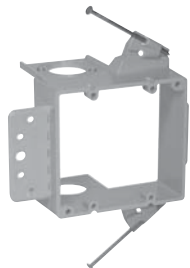
Low Voltage Brackets

Non-Metallic

Carlton®



SC100A



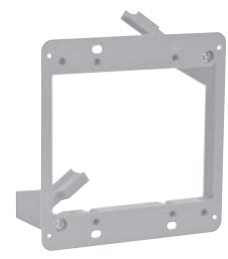
SC200A



SC300A



SC100RR



SC200RR

Open-backed to easily accommodate the bend radiuses required for low voltage cabling and deep devices such as volume controls, and is designed to fit a standard two-gang three-gang faceplate. It also features an easy nail-on mounting or screw-in bracket, while more hard shell provides increased durability and no racking.

Swing arm rework bracket. 1 gang.

Swing arm rework bracket. 2 gang.



SC100SC

This low voltage bracket provides a low voltage outlet next to a previously installed high voltage outlet. For new construction and rework. Attaches easily to most electrical boxes, and is designed to fit a standard two-gang faceplate.



SC100ADJC

New work adjustable low voltage bracket. 1 gang.

Technical Specifications

Cat. No.	Description
New Work Brackets	
SC100A	One-Gang backless bracket 2.32"W x 3.73"L
SC200A	Two-Gang backless bracket 5.35"W x 3.81"L
SC300A	Three-Gang backless bracket 8.69"W x 7.20"L
Rework Brackets	
SC100RR	One-Gang backless old work bracket w/ swing clamps 2-1/4" x 3-1/4"
SC200RR	Two-Gang backless old work bracket w/ swing clamps 3.92" x 4.00"
Add-On Bracket	
SC100SC	One-Gang Add-On Bracket 1.80"W x 3.68"L
New Work Adjustable Brackets	
SC100ADJC	One-Gang adjustable brackless bracket 3-7/8"W x 3-3/4"H
SC200ADJC	Two-Gang adjustable brackless bracket 5-5/8"W x 3-5/8"H