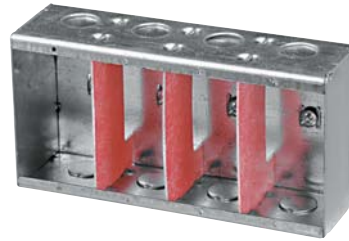


347 Volt Boxes

IBERVILLE®



CIMBS-1-HV



CIMBS-4-HV

1 gang to 4 gangs



CIMBD-1-HV



CIMBD-4-HV

1 gang to 4 gangs

Technical Specifications

Cat. No.	Volume (Cu. in.)	Number of Gangs	Width	
			(Inches)	Knockouts 1/2" ends
2-3/8" Deep x 4" High				
CIMBS-1-HV	20.25	1	2-1/4	2
CIMBS-2-HV	20.25 / gang	2	4-1/16	4
CIMBS-3-HV	20.25 / gang	3	5-7/8	6
CIMBS-4-HV	20.25 / gang	4	7-11/16	8
3-3/8" Deep x 4" High				
CIMBD-1-HV	22.5	1	2-1/4	4
CIMBD-2-HV	22.5 / gang	2	4-1/16	8
CIMBD-3-HV	22.5 / gang	3	5-7/8	12
CIMBD-4-HV	22.5 / gang	4	7-11/16	16

NOTE: All HV boxes have tapped holes spaced 3-17/32" to accommodate 347 Volt switches.
Standard lateral spacing 1-13/16", on pre-ganged boxes.
Pre-ganged boxes include fibre partitions.

Partitions Only

CIMBS-HV-PART

CIMBD-HV-PART



347 Volt Boxes

Covers and Accessories

IBERVILLE®



CI1110-HV



BC11-C-4-HV



BC11-C-5-HV



CI11-C-10-HV



CIFS-1G-1/2-HV
CIFS-1G-3/4-HV

Includes stamped aluminum "FS" cover.



CIFS-9-HV

Technical Specifications

Cat. No.	Volume (Cu. in.)	Number of Gangs	Features	Dimensions	Knockouts
			Raised Ground Screw	H x W x D (inches)	1/2" ends
1-7/8" Deep					
CI1110-HV	16.5	1	yes	4 x 2-3/8 x 1-7/8	2
347 Volt "FS" Box Kits — 1-7/8" Deep (Cast Aluminum)					
CIFS-1G-1/2-HV	14.0	1	yes	6 x 2-13/16 x 1-7/8	1 x 1/2 hub
CIFS-1G-3/4-HV	14.0	1	yes	6 x 2-13/16 x 1-7/8	1 x 3/4 hub

NOTE: All HV boxes have tapped holes spaced 3-17/32" to accommodate 347 Volt switches.

Cat. No.	Description
347 Volt Utility Box Covers	
BC11-C-4-HV	Blank.
BC11-C-5-HV	One toggle switch.
CI11-C-10-HV	Decora.

Cat. No.	Description
347 Volt "FS" Cover (Stamped Aluminum)	
CIFS-9-HV	One toggle switch.

Mounting screws included.

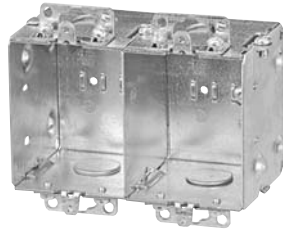
347 Volt Boxes

and Accessories

IBERVILLE®



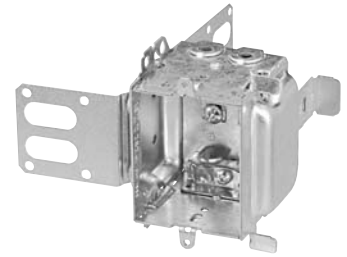
CI1204-1-HV



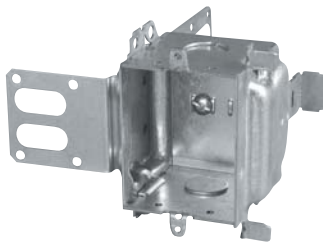
CI1204-2-HV



CI1204-LA-HV



CI1204-LSSAX-HV



CI1204-SSX-HV



CIHVP



CISBEX-HV

Technical Specifications

Cat. No.	Volume (Cu. in.)	Number of Gangs	Dimensions H x W x D (inches)	Features			Knockouts 1/2" ends	Pryouts ends
				ears	clamps	brackets		
2-1/2" Deep — Gangable								
CI1204-1-HV	16.0	1	3 x 2-1/4 x 2-1/2	recessed	-	-	2	-
CI1204-2-HV	32.0	2	3 x 4-1/2 x 2-1/2	recessed	-	-	4	-
CI1204-LA-HV	16.0	1	3 x 2-1/4 x 2-1/2	flush	BX	-	-	4
CI1204-LSSAX-HV	16.0	1	3 x 2-1/4 x 2-1/2	-	BX	"SSX"	-	4
CI1204-SSX-HV	16.0	1	3 x 2-1/4 x 2-1/2	-	-	"SSX"	2	-
CI1204-SS1X-HV	16.0	1	3 x 2-1/4 x 2-1/2	-	-	"SSX"	2	-
CI1204-LSSAX-HV-1	16.0	1	3 x 2-1/4 x 2-1/2	-	BX	"SSX"	-	4

NOTE: All HV boxes have tapped holes spaced 3-17/32" to accommodate 347 Volt switches.
 CI1204-2-HV includes CIHVP partition.
 On multigang boxes lateral spacing 2-1/4".
 When ganged, CIHVP partition must be installed between spacers.

Cat. No.	Description
347 Volts Partitions (Steel)	
CIHVP	High voltage partition to be used with 347 Volt boxes (CI1204 series) when ganged.
347 Volts Device Box Extension	
CISBEX-HV	2" X 3" 347 Volt – Maximum adjustable depth – 1-7/8" – Complete with mounting screws



347 Volt Boxes

Covers

IBERVILLE®



CI6851-HV



CI6852-HV



CI6853-HV



CI6854-HV

Technical Specifications

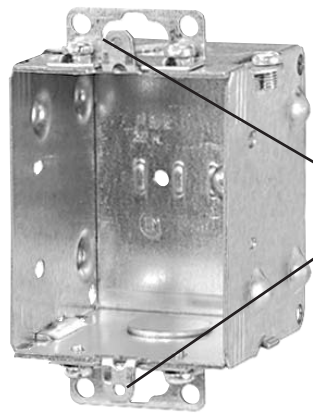
Cat. No.	Description
347 Volt Stainless Steel Wall Plates (for CI1204-HV Boxes)	
CI6851-HV	Single 347 Volt toggle switch.
CI6852-HV	Two 347 Volt toggle switches.
CI6853-HV	Three 347 Volt toggle switches.
CI6854-HV	Four 347 Volt toggle switches.

NOTE: Device mounting screws included.
Lateral spacing 2-1/4" on CI6852-HV / CI6853-HV / CI6854-HV.

347 Volt Boxes

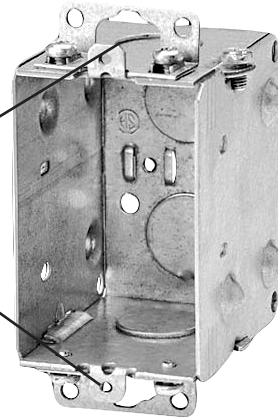
IBERVILLE®

HV (347 VOLT) vs Regular Box Spacing



3.531"
C to C

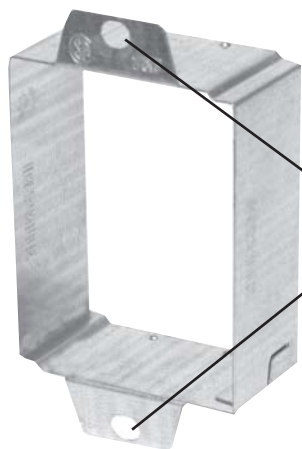
CI1204-1-HV



3.281"
C to C

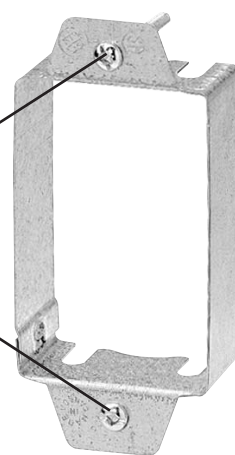
BC1104

Extension Rings



3.531"
C to C

CISBEXHV



3.281"
C to C

CISBEX

CSA Rule C22.2 No. 18.1 1-04 paragraph 9.8

