

Bar Hangers

and Brackets

IBERVILLE®

Technical Specifications



BC1041 / BC1042

Features 6010 / 6011 Series

- Claws provide temporary support for proper positioning until permanently installed.
- Accurate and automatic positioning on joist.
- End plate locator tab is scored and marked for lath and plaster drywall applications with standard and deep boxes.
- Foot straightened gauges for 1-1/2" deep box with cover or 2-1/8" deep box without cover. With foot broken off gauges for shallow pan box.



**6010-DW-25
/ 6011-DW-25**

**6010-ADW-25
/ 6011-ADW-25**



CI1060

Cat. No.	Description
Bar Hangers	
BC1041	Adjustable from 11-1/2" to 18-1/2". Maximum load capacity: 50 lb. (22.7).
BC1042	Adjustable from 16-1/2" to 22-1/2". Maximum load capacity: When extended up to 22-1/2" 50 lb. (22.7).
Adjustable Bar Hangers for Plaster and Drywall — Depth 1-3/16"	
6010-DW-25 †	For 3/8", 1/2" and 5/8" wall board and plaster. Score marks for drywall and plaster depths. Maximum load capacity: 50 lb. (22.7). Packaged complete with stud.
6010-ADW-25 †	For 3/8", 1/2" and 5/8" wall board and plaster. Score marks for drywall and plaster depths. Maximum load capacity: 50 lb. (22.7). Packaged complete with fastener.
6011-DW-25 †	For 3/8", 1/2" and 5/8" wall board and plaster. Score marks for drywall and plaster depths. Maximum load capacity: 50 lb. (22.7). Packaged complete with stud.
6011-ADW-25 †	For 3/8", 1/2" and 5/8" wall board and plaster. Score marks for drywall and plaster depths. Maximum load capacity: 50 lb. (22.7). Packaged complete with fastener.
Support Brackets	
CI1060	Length: 16". Grooved for box ears.

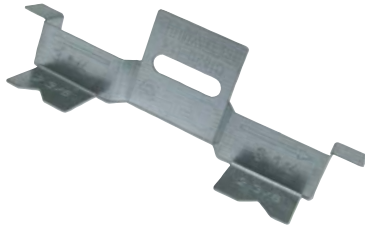
Brackets, Clamps, Partitions

IBERVILLE®

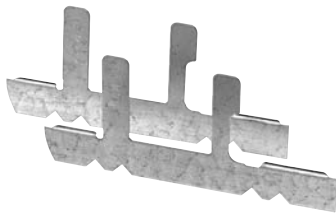
Technical Specifications

Features

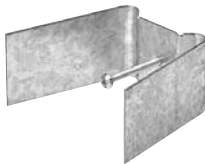
- Quickly attaches box through finished drywall.
- Easy to install.



CI820-DX



CI820D



CILRW



CILA CLAMP



CISSX-6



CI1004-P



CI1104-P



CI2104-P

Cat. No.

Description

Rework Support Brackets

CI820D

Device box supports. Max. wall thickness 1".

CI820-DX

Device box support.

CILRW

For installing CI-1104 series of boxes with ears, in closed wall "rework" applications. Complete with an 8-32 x 1-1/2 screw.

Universal Cable Clamps (for BX / Loomex)

CILA CLAMP

Supplied with screws.

Support Brackets

CISSX-6

Support bracket extension for 6" metal stud.

Device Box Partitions

CI1004-P

Steel partitions for 2", 2-1/2" and 3" deep outlet boxes.

CI1104-P*

Steel partition for 2-1/2" deep gangable boxes.

To be used with CI-1104 / CI-3104 series of boxes.

CI2104-P

Steel partitions for 2" and 2-1/2" deep outlet boxes.

***NOTE: Install partition while ganging boxes.**

In accordance with C.E.C. 2006 Edition, Rule 12-3030, a partition must be used when conductors in a multi-gang box are connected to different sources of voltage.



Technical Specifications



CIBEX



CIXCUBE



CIBEX-HV



C1SCREAR/SCR



C12SCREAR/SCR



C166



C166-FPP



C166-PPH



C166-SS

Cat. No.

Description

Device Box Extensions

CIBEX

2" x 3" switch box extension.
Maximum adjustable depth is 7/8".
Complete with mounting screws.

CIBEX-HV

2" x 3" switch box extension. High voltage (347V) for use with C11204-HV series. Maximum adjustable depth is 7/8". Complete with mounting screws. Adds 5.5 cu. in. to any 2-1/2" deep gangable device box. Provision for external nailing.

CIXCUBE

Ground Screws

GS-1-IB *

8-32 x 5/16" large combination head screw.

C11SCREAR/SCR

Box ear and screw only, one hole model.

C12SCREAR/SCR

Box ear and screw only, two hole model.

Cat. No.

**Dimensions
W x H (in.)**

Cable Protector Plates

C166

1-3/8 x 3

C166-FPP

2-3/8 x 3-1/2

C166-PPH

1-1/4 x 3

C166-SS

4-3/8 x 1-7/8

In accordance with C.E.C., 2002 Edition, rule 12-516.

* Not Applicable

