



**NON-METALLIC CABLE TRAY & STRUT SYSTEMS**

# 3" HORIZONTAL TEE & CROSS

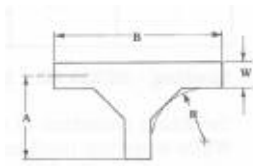
**PART NUMBERING SYSTEM**

<b>NM</b>	<b>-</b>	<b>M</b>	<b>3</b>	<b>P</b>	<b>24</b>	<b>HT</b>	<b>12</b>
Non-metallic		Mitered	Height	Material	Width	Type	Radius



Sample mitered fitting

**HORIZONTAL TEE**



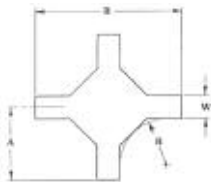
-R-Bend Radius in.	Tray Width in.	Horizontal Tee		
		Catalog No.	Dimensions	
			A in.	B in.
<b>12</b>	6	NM-M3-(Matl)-06-HT12	19-1/4	38
	9	NM-M3-(Matl)-09-HT12	20-3/4	41-1/2
	12	NM-M3-(Matl)-12-HT12	22-1/4	44-1/2
	18	NM-M3-(Matl)-18-HT12	25-1/4	50-1/2
	24	NM-M3-(Matl)-24-HT12	28-1/4	56-1/2

Two pairs of stainless steel SS6 splice plates with SS6 hardware included.



Sample mitered fitting

**HORIZONTAL CROSS**



-R-Bend Radius in.	Tray Width in.	Horizontal Bend		
		Catalog No.	Dimensions	
			A in.	B in.
<b>12</b>	6	NM-M3-(Matl)-06-45HX12	19-1/4	38-1/2
	9	NM-M3-(Matl)-09-45HX12	20-3/4	41-1/2
	12	NM-M3-(Matl)-12-45HX12	22-1/4	44-1/2
	18	NM-M3-(Matl)-18-45HX12	25-1/4	50-1/2
	24	NM-M3-(Matl)-24-45HX12	28-1/4	56-1/2

Three pairs of stainless steel SS6 splice plates with SS6 hardware included.

FITTINGS

Standard rung spacing for fittings is 9". For other types of splice plates, see page 51.

Dimensions for reference only, when critical contact factory. Consult factory for availability of molded fittings.



## NON-METALLIC CABLE TRAY & STRUT SYSTEMS

# 4" HORIZONTAL TEE & CROSS

### PART NUMBERING SYSTEM

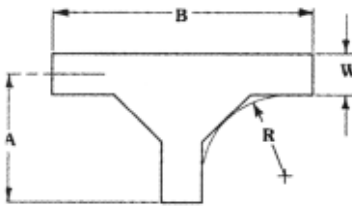
<b>NM</b>	<b>-</b>	<b>M</b>	<b>4</b>	<b>P</b>	<b>24</b>	<b>HT</b>	<b>12</b>
Non-metallic		Mitered	Height	Material	Width	Type	Radius

† For molded fitting, if available, please remove "M" in the catalog number.  
Ex: NM-4P-24HT12



Sample mitered fitting

### HORIZONTAL TEE

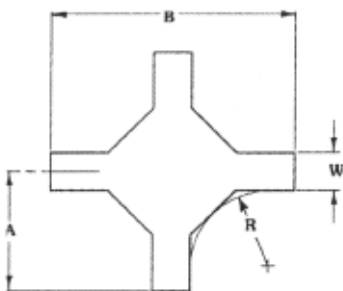


-R-Bend Radius in.	Tray Width in.	Horizontal Tee		
		Catalog No.	Dimensions	
			A in.	B in.
<b>12</b>	6	† NM-M4-(Matl)-06-HT12	22-1/4	44-1/2
	9	† NM-M4-(Matl)-09-HT12	23-3/4	47-1/2
	12	† NM-M4-(Matl)-12-HT12	25-1/4	50-1/2
	18	† NM-M4-(Matl)-18-HT12	28-1/4	56-1/2
	24	† NM-M4-(Matl)-24-HT12	31-1/4	62-1/2
	30	† NM-M4-(Matl)-30-HT12	34-1/4	68-1/2
<b>24</b>	6	† NM-M4-(Matl)-06-HT24	34-1/4	68-1/2
	9	† NM-M4-(Matl)-09-HT24	35-3/4	71-1/2
	12	† NM-M4-(Matl)-12-1-M4	37-1/4	74-1/2
	18	† NM-M4-(Matl)-18-HT24	40-1/4	80-1/2
	24	† NM-M4-(Matl)-24-HT24	43-1/4	86-1/2
	30	† NM-M4-(Matl)-30-HT24	46-1/4	92-1/2
<b>36</b>	6	† NM-M4-(Matl)-06-HT36	43-1/4	86-1/2
	9	† NM-M4-(Matl)-09-HT36	44-3/4	89-1/2
	12	† NM-M4-(Matl)-12-HT36	46-1/4	92-1/2
	18	† NM-M4-(Matl)-18-HT36	49-1/4	98-1/2
	24	† NM-M4-(Matl)-24-HT36	52-1/4	104-1/2
	30	† NM-M4-(Matl)-30-HT36	55-1/4	110-1/2
36	† NM-M4-(Matl)-36-HT36	58-1/4	116-1/2	

Two pairs of stainless steel SS6 splice plates with SS6 hardware included.

† Denotes molded fitting available.

### HORIZONTAL CROSS



-R-Bend Radius in.	Tray Width in.	Horizontal Cross		
		Catalog No.	Dimensions	
			A in.	B in.
<b>12</b>	6	† NM-M4-(Matl)-06-HX12	22-1/4	44-1/2
	9	† NM-M4-(Matl)-09-HX12	23-3/4	47-1/2
	12	† NM-M4-(Matl)-12-HX12	25-1/4	50-1/2
	18	† NM-M4-(Matl)-18-HX12	28-1/4	56-1/2
	24	† NM-M4-(Matl)-24-HX12	31-1/4	62-1/2
	30	† NM-M4-(Matl)-30-HX12	34-1/4	68-1/2
<b>24</b>	6	† NM-M4-(Matl)-06-HX24	34-1/4	68-1/2
	9	† NM-M4-(Matl)-09-HX24	35-3/4	71-1/2
	12	† NM-M4-(Matl)-12-HX24	37-1/4	74-1/2
	18	† NM-M4-(Matl)-18-HX24	40-1/4	80-1/2
	24	† NM-M4-(Matl)-24-HX24	43-1/4	86-1/2
	30	† NM-M4-(Matl)-30-HX24	46-1/4	92-1/2
<b>36</b>	6	† NM-M4-(Matl)-06-HX36	43-1/4	86-1/2
	9	† NM-M4-(Matl)-09-HX36	44-3/4	89-1/2
	12	† NM-M4-(Matl)-12-HX36	46-1/4	92-1/2
	18	† NM-M4-(Matl)-18-HX36	49-1/4	98-1/2
	24	† NM-M4-(Matl)-24-HX36	52-1/4	104-1/2
	30	† NM-M4-(Matl)-30-HX36	55-1/4	110-1/2
36	† NM-M4-(Matl)-36-HX36	58-1/4	116-1/2	

Three pairs of stainless steel SS6 splice plates with SS6 hardware included.

† Denotes molded fitting available.

Standard rung spacing for fittings is 9". For other types of splice plates, see page 51.

Dimensions for reference only, when critical contact factory. Consult factory for availability of molded fittings.



# 6" HORIZONTAL TEE & CROSS

NON-METALLIC CABLE TRAY & STRUT SYSTEMS

## PART NUMBERING SYSTEM

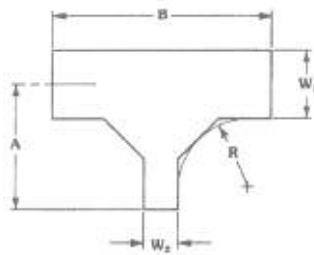
<b>NM</b>	<b>-</b>	<b>M</b>	<b>6</b>	<b>P</b>	<b>24</b>	<b>HT</b>	<b>12</b>
Non-metallic		Mitered	Height	Material	Width	Type	Radius

† For molded fitting, if available, please remove "M" in the catalog number.  
Ex: NM-6P24HT12



Sample mitered fitting

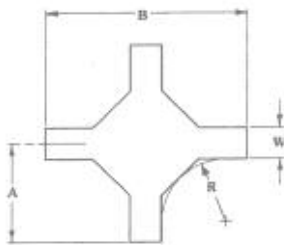
## HORIZONTAL TEE



-R-Bend Radius in.	Tray Width in.	Horizontal Tee		
		Catalog No.	A in.	B in.
<b>12</b>	6	NM-M6-(Matl)-06-HT12	19-1/4	38
	9	NM-M6-(Matl)-09-HT12	20-3/4	41
	12	NM-M6-(Matl)-12-HT12	22-1/4	44
	18	NM-M6-(Matl)-18-HT12	25-1/4	50
	24	NM-M6-(Matl)-24-HT12	28-1/4	56
	30	NM-M6-(Matl)-30-HT12	31-1/4	62
<b>24</b>	6	† NM-M6-(Matl)-06-HT24	34-1/4	68-1/2
	9	† NM-M6-(Matl)-09-HT24	35-3/4	71-1/2
	12	† NM-M6-(Matl)-12-HT24	37-1/4	74-1/2
	18	† NM-M6-(Matl)-18-HT24	40-1/4	81-1/2
	24	† NM-M6-(Matl)-24-HT24	43-1/4	86-1/2
	30	† NM-M6-(Matl)-30-HT24	46-1/4	92-1/2
<b>36</b>	6	† NM-M6-(Matl)-06-HT36	49-1/4	98-1/2
	9	NM-M6-(Matl)-09-HT36	46-1/4	92-1/2
	12	NM-M6-(Matl)-09-HT36	47-3/4	95-1/2
	18	NM-M6-(Matl)-12-HT36	49-1/4	98-1/2
	24	NM-M6-(Matl)-12-HT36	49-1/4	98-1/2
	30	NM-M6-(Matl)-18-HT36	52-1/4	104-1/2
<b>36</b>	24	NM-M6-(Matl)-18-HT36	52-1/4	104-1/2
	30	NM-M6-(Matl)-24-HT36	55-1/4	110-1/2
	30	NM-M6-(Matl)-24-HT36	55-1/4	110-1/2
	30	NM-M6-(Matl)-30-HT36	58-1/4	116-1/2
	30	NM-M6-(Matl)-30-HT36	58-1/4	116-1/2
	36	NM-M6-(Matl)-36-HT36	61-1/4	122-1/2

Two pairs of stainless steel SS6 splice plates with SS6 hardware included.  
† Denotes molded fitting available.

## HORIZONTAL CROSS



-R-Bend Radius in.	Tray Width in.	Horizontal Cross		
		Catalog No.	A in.	B in.
<b>12</b>	6	NM-M6-(Matl)-06-HX12	19-1/4	38
	9	NM-M6-(Matl)-09-HX12	20-3/4	41
	12	NM-M6-(Matl)-12-HX12	22-1/4	44
	18	NM-M6-(Matl)-18-HX12	25-1/4	50
	24	NM-M6-(Matl)-24-HX12	28-1/4	56
	30	NM-M6-(Matl)-30-HX12	31-1/4	62
<b>24</b>	6	† NM-M6-(Matl)-06-HX24	34-1/4	68-1/2
	9	† NM-M6-(Matl)-09-HX24	35-3/4	71-1/2
	12	† NM-M6-(Matl)-12-HX24	37-1/4	74-1/2
	18	† NM-M6-(Matl)-18-HX24	40-1/4	80-1/2
	24	† NM-M6-(Matl)-24-HX24	43-1/4	86-1/2
	30	† NM-M6-(Matl)-30-HX24	46-1/4	92-1/2
<b>36</b>	6	† NM-M6-(Matl)-06-HX36	49-1/4	98-1/2
	9	NM-M6-(Matl)-09-HX36	46-1/4	92-1/2
	9	NM-M6-(Matl)-09-HX36	47-3/4	95-1/2
	12	NM-M6-(Matl)-12-HX36	49-1/4	98-1/2
	18	NM-M3-(Matl)-18-HX36	52-1/4	104-1/2
	24	NM-M3-(Matl)-24-HX36	55-1/4	110-1/2
<b>36</b>	24	NM-M3-(Matl)-24-HX36	55-1/4	110-1/2
	30	NM-M3-(Matl)-30-HX36	58-1/4	116-1/2
	30	NM-M3-(Matl)-30-HX36	58-1/4	116-1/2
	36	NM-M3-(Matl)-36-HX36	61-1/4	122-1/2
	36	NM-M3-(Matl)-36-HX36	61-1/4	122-1/2

Three pairs of stainless steel SS6 splice plates with SS6 hardware included.  
† Denotes molded fitting available.

Standard rung spacing for fittings is 9". For other types of splice plates, see page 51.