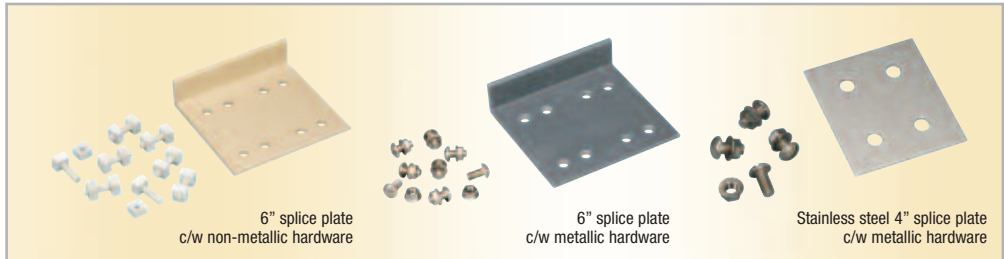




NON-METALLIC CABLE TRAY & STRUT SYSTEMS

ACCESSORIES



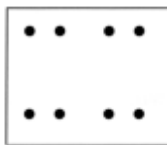
SPLICE PLATE SELECTION GUIDE

NM - X	SS	4	00	4	()	SS6
CABLE TRAY SYSTEM Non-metallic	ACCESSORY NUMBER	MATERIAL SS - Stainless Steel FRP - Fiberglass P - Polyester V - Vinyl Ester	# OF HOLES IN PLATE 4 8	TYPE/ANGLE 00 - Straight 01 - Slotted Straight 02 - Vertical Adjustable 03 - Horizontal Adjustable 04 - Step Down 05 - Tray to Box 30 - 30° Angle 45 - 45° Angle 90 - 90° Angle	TRAY SERI ES 3" 4" 6"	HARDWARE SS6 - 316 Stainless Steel MO - Monel SB - Silicon Bronze FR - Fiberglass

Example: NM-XSS4004SS6, Stainless steel 316, 4 holes supplied with stainless steel 316 hardware for a 4" deep straight section.

Note: Splice plates shown on pages 51-53 represent splices for 6" side rail height. Number of holes may vary with other side rail heights.

STANDARD SPLICE PLATES

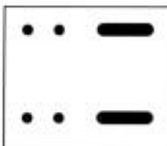


Quantity required supplied with each tray section.
Order only pairs of splice plates needed for field modifications.
SS6 hardware supplied as standard - use SS6 suffix.
Other hardware available, specify by hardware suffix.
Hardware other than SS6 is considered special.

Material	Height	Catalog No.
Stainless Steel	6"	NM-XSS-8006*
	4"	NM-XSS-4004*
	3"	NM-XSS-4003*

* Hardware suffix needed to complete part number

EXPANSION SPLICE PLATE



These plates allow for up to 1" expansion or contraction of tray system.
For correct gap setting procedure, see page 10.

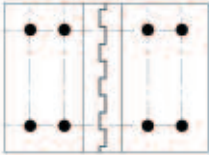
Material	Side Rail Height	Catalog No.
Stainless Steel 316 (16 gauge)	6"	NM-XSS-8016*
	4"	NM-XSS-4014*
	3"	NM-XSS-4013*

* Hardware suffix needed to complete part number

All splice plate hardware is 3/8".



HORIZONTAL ADJUSTABLE SPLICE PLATES

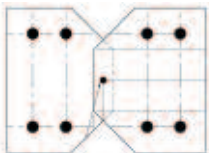


These plates provide for changes in the horizontal direction that do not conform to standard fittings. Furnished in pairs

Material	Side Rail Height	Catalog No.
Stainless Steel 316 (16 gauge)	6"	NM-XSS-8036*
	4"	NM-XSS-4034*
	3"	NM-XSS-4033*

* Hardware suffix needed to complete part number

VERTICAL ADJUSTABLE SPLICE PLATES

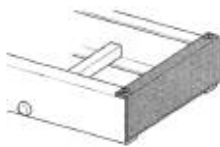


These plates provide for changes in elevation that do not conform to standard vertical fittings. Furnished in pairs

Material	Side Rail Height	Catalog No.
Stainless Steel 316 (16 gauge)	6"	NM-XSS-8026*
	4"	NM-XSS-4024*
	3"	NM-XSS-4023*

* Hardware suffix needed to complete part number

BLIND END PLATE



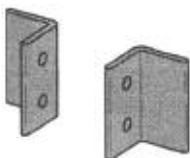
This plate forms a closure for any tray that dead ends. Furnished as one plate.

Material	Height	Catalog No.
Polyester or Vinylester	6"	NM-XBE*1086W**
	4"	NM-XBE*1084W**
	3"	NM-XBE*1083W**

* Material suffix: P=Polyester, V= Vinylester

** Hardware suffix needed to complete part number
W = tray width

TRAY TO BOX SPLICE PLATES



These plates are used to attach the end of a tray run to a distribution box or control center. Furnished in pairs

Material	Height	Catalog No.
Stainless Steel	6"	NM-XSS8056*
	4"	NM-XSS4054*
	3"	NM-XSS4053*

* Hardware suffix needed to complete part number

STEP DOWN PLATES



These splice plates provide for changes in side rail heights. Furnished in pairs.

Material	Height	Catalog No.
Stainless Steel 316 (16 gauge)	6" to 3"	NM-XSS-8063*
	6" to 4"	NM-XSS-8064*
	4" to 3"	NM-XSS-4043*

* Hardware suffix needed to complete part number

All splice plate hardware is 3/8". Splice plates shown represent splices for 6" side rail height. Number of holes may vary with other side rail heights.



NON-METALLIC CABLE TRAY & STRUT SYSTEMS

ACCESSORIES

VERTICAL SPLICE PLATES

90°



These splice plates provide for changes in elevation. Furnished in pairs.

Material	Side Rail Height	Catalog No.
Stainless Steel 316 (16 gauge)	6"	NM-XSS-8906V*
	4"	NM-XSS-4904V*
	3"	NM-XSS-4903V*

* Hardware suffix needed to complete part number

45°



These splice plates provide for changes in elevation. Furnished in pairs.

Material	Side Rail Height	Catalog No.
Stainless Steel 316 (16 gauge)	6"	NM-XSS-8456V*
	4"	NM-XSS-4454V*
	3"	NM-XSS-4453V*

* Hardware suffix needed to complete part number

30°



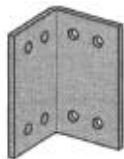
These splice plates provide for changes in elevation. Furnished in pairs.

Material	Side Rail Height	Catalog No.
Stainless Steel 316 (16 gauge)	6"	NM-XSS-8306V*
	4"	NM-XSS-4304V*
	3"	NM-XSS-4303V*

* Hardware suffix needed to complete part number

HORIZONTAL SPLICE PLATES

90°



These splice plates provide for changes in the horizontal direction. Furnished in pairs.

Material	Side Rail Height	Catalog No.
Stainless Steel 316 (16 gauge)	6"	NM-XSS-8906H*
	4"	NM-XSS-4904H*
	3"	NM-XSS-4903H*

* Hardware suffix needed to complete part number

45°



These splice plates provide for changes in the horizontal direction. Furnished in pairs.

Material	Side Rail Height	Catalog No.
Stainless Steel 316 (16 gauge)	6"	NM-XSS-8456H*
	4"	NM-XSS-4454H*
	3"	NM-XSS-4453H*

* Hardware suffix needed to complete part number

30°



These splice plates provide for changes in the horizontal direction. Furnished in pairs.

Material	Side Rail Height	Catalog No.
Stainless Steel 316 (16 gauge)	6"	NM-XSS-8306H*
	4"	NM-XSS-4304H*
	3"	NM-XSS-4303H*

* Hardware suffix needed to complete part number

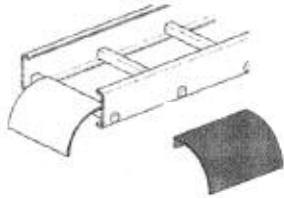
All splice plate hardware is 3/8". Splice plates shown represent splices for 6" side rail height. Number of holes may vary with other side rail heights.



NON-METALLIC CABLE TRAY & STRUT SYSTEMS

ACCESSORIES

LADDER DROP-OUT



Specially-designed Ladder Drop-Outs provide a rounded surface with adequate radius to protect cable as it exists from the tray, preventing damage to insulation.

Material	Height	Catalog No.
Polyester Resin	6" to 36"	NM-XF-1104-W

Supplied with a 4" radius.
W = tray width

BARRIERS



Furnished with #10 x 3/4 self-tapping stainless steel screws

Material	Side Rail Height	Catalog No.
Polyester Resin	6"	NM-BS06P-120
	4"	NM-BS04P-120
	3"	NM-BS03P-120
Vinyl Ester Resin	6"	NM-BS06V-120
	4"	NM-BS04V-120
	3"	NM-BS03V-120

FLEXIBLE HORIZONTAL BARRIER KIT



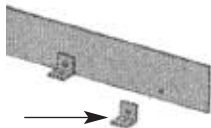
One Kit allows up to 38" radius position of the barrier. For larger than 38" radius barrier position, two kits are required.

Kit Contents

- 1 pc - 72" Straight Barrier
- 4 pc - XF-9002 Barrier Strip Clip
- 8 pc - Thermoplastic Drive Rivet
- 4 Pc - #10 x 3/4" Stainless Steel Self-Tapping Screw
- Assembly required - directions included.

Material	Side Rail Height	Loading Depth 'H'	Catalog No.
Polyester Resin	6"	4-11/16	NM-BS06P-90HBFL
	4"	2-11/16	NM-BS04P-90HBFL
	3"	1-3/4	NM-BS03P-90HBFL
Vinyl Ester Resin	6"	4-11/16	NM-BS06V-90HBFL
	4"	2-11/16	NM-BS04V-90HBFL
	3"	1-3/4	NM-BS03V-90HBFL

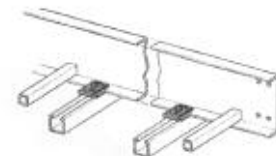
BARRIER MOUNTING ANGLE CLIPS WITH FASTENERS



- 1 pack contains
- 4 angle clips and fasteners.
 - 2 thermoplastic drive rivets
 - 1 #10 x 3/4" Stainless steel self-tapping screw.

Material	Catalog No.
Polyester Resin	NM-PK-BAC

CLAMP/GUIDE

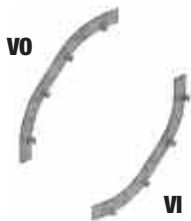


Combination hold down clamp and guide. Designed for 3/8" hardware - not included
Furnished in pairs.

Material	Catalog No.
Polyester Resin	NM-XFP-1208



VERTICAL BARRIERS



Barriers for vertical fitting.
Please add angle (X) and radius (†) to catalogue number.
Furnished with #10 X 3/4 self-tapping stainless steel screws.

Material	Side Rail Height	Catalogue No.
Polyester Resin	6"	NM-BS06P(X)VI/VO(†)
	4"	NM-BS06P(X)VI/VO(†)
	3"	NM-BS06P(X)VI/VO(†)
Vinyl Ester Resin	6"	NM-BS06V(X)VI/VO(†)
	4"	NM-BS06V(X)VI/VO(†)
	3"	NM-BS06V(X)VI/VO(†)

VI = Inside vertical
VO = Outside vertical

SPRAY SEALANT



Spray acrylic to reseal fiberglass after field modifications.

Description	Catalogue No.
12 fl. oz. can	NM-CLEAR-1215

RESIN SEAL KIT



To reseal fiberglass after field modifications. Vinyl Ester Resin

Kit Contents

- Resin
- Catalyst
- Stir stick and applicator

Description	Catalogue No.
1/2 pint	NM-RSK-05
1 pint	NM-RSK-10



NON-METALLIC CABLE TRAY & STRUT SYSTEMS

ACCESSORIES

COVERS FOR STRAIGHT SECTIONS



Material thickness: 1/8"
Standard cover length: 120" (10')
Standard mounting hardware: (10 each) #10 x 1/2" stainless, self-tapping screws provided with each section

COVERS SELECTION GUIDE

NM - FC P 12 120

NON-METALLIC	COVER TYPE FC = Flat PC = Peaked	MATERIAL P = Polyester V = Vinyl Ester	TRAY WIDTH 6" to 36"	LENGTH 120" (10 ft.)
--------------	--	--	-------------------------	-------------------------

Note : Peaked covers available for straight sections only.

COVERS FOR FITTINGS

Material thickness: 1/8"
Standard mounting hardware: (10 each) #10 x 1/2" stainless, self-tapping screws provided with each section

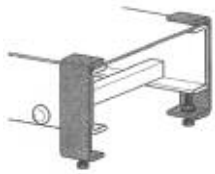
COVERS SELECTION GUIDE

NM - FC P 12 HB 90 24

NON-METALLIC	TYPE OF COVER FC = Flat	MATERIAL P = Polyester V = Vinyl Ester	WIDTH 6" to 36"	FITTING DESIGNATION HB IV/OV HT HX	ANGL E 30 45 60 90	RADIU S 12 24 36
--------------	----------------------------	--	--------------------	--	--------------------------------	---------------------------

Note : Peaked covers not available.
Other fitting covers are available. Please consult your sales office.

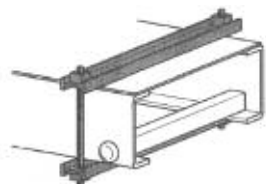
STANDARD COVER CLAMP



Recommended for indoor applications. Available in both Polyester and Vinyl Ester Resin. Cover clamp available for flat covers only.

Material	Side Rail Height	Catalog No.
Polyester Resin	6"	NM-XCC-P-9016
	4"	NM-XCC-P-9014
	3"	NM-XCC-P-9013
Vinyl Ester Resin	6"	NM-XCC-V-9016
	4"	NM-XCC-V-9014
	3"	NM-XCC-V-9013

HEAVY DUTY COVER CLAMP



Recommended for outdoor service. Heavy duty cover clamp available for flat covers only. Available in both Polyester and Vinyl Ester Resin.

Material	Side Rail Height	Catalog No.
Polyester Resin	6"	NM-XWC-P-W*-9064
	4"	NM-XWC-P-W*-9044
	3"	NM-XWC-P-W*-9034
Vinyl Ester Resin	6"	NM-XWC-C-W*-9064
	4"	NM-XWC-C-W*-9044
	3"	NM-XWC-C-W*-9034

* W = tray width

THERMOPLASTIC DRIVE RIVET



Shipped in packages of 25 pcs.

Material	Catalog No.
Thermoplastic	TPDR

Raised cover clamps available. Please consult your sales offices.