

In order to ensure that your Channel Tray installation will meet your present and future needs, a sequence of decisions must be made. These decisions are relatively simple and can be condensed down to 4 steps.

1. Material Choice

- Aluminum
- Pre-Galvanized
- Hot Dipped
- Stainless Steel
- Coatings
- Other

2. Type of Tray Bottom

- Ventilated
- Solid

3. T&B Channel Tray Width

- 1.5"
- 3"
- 4"
- 6"

4. Fittings Selection

- Horizontal bends (90°, 60°, 45° and 30°)
- Horizontal Tees and Crosses
- Vertical bends (90°, 60°, 45° and 30°)

Each step is explained in detail on the following pages.

Selection Process

1. Material Choice

T&B Channel Tray systems are fabricated from a corrosion-resistant metal (low-carbon steel, stainless steel or an aluminum alloy) or from a metal with a corrosion-resistant finish (zinc or epoxy). The choice of material for any particular installation depends on the installation environment (corrosion and electrical considerations) and cost. Please refer to the technical section (pages 4 to 41) for further explanation.

2. Type of Channel Tray Bottom

Cable Channel

Thomas & Betts offers cable channel in solid or ventilated straight sections.

Ventilated channel has burr free oblong punched holes for easy access.

Ty-Rap® slots are provided between each opening for securing of cable.

Thomas & Betts channel tray meets NEMA VE-1 / CSA C22.22 N° 126.1-02



Ventilated Channel



Solid Channel



3. Select Channel Tray Width

The width of a channel tray is a function of the number, size, spacing and weight of the cables in the tray. Available nominal widths are 1.5, 3, 4 and 6 inches.

When specifying width, cable ties or other spacing devices may be used to maintain the required air space between cables.

4. Select the Fittings

Fittings are used to change the size or direction of the channel tray. The most important decision to be made in fitting design concerns radius. The radius of the bend, whether horizontal or vertical, can be zero (non-radius), 12", 24" or greater on a custom basis. The selection requires a compromise with the considerations being available space, minimum bending radius of cables, ease of cable pulling, and cost. The typical radius is 24 inches.

Fittings are also available for 30°, 45°, 60° and 90° angles. When a standard angle will not work, field fittings or adjustable elbows can be used. It may be necessary to add supports to the tray at these points.

Refer to CSA/NEMA VE2 Installation Guidelines for suggested support locations.



Channel Tray

Straight Sections Part Number Selection Guide

How to create Straight Section part numbers

1. Select the material
2. Select nominal width of tray
3. Select the bottom type
4. The last number is the length of the channel tray

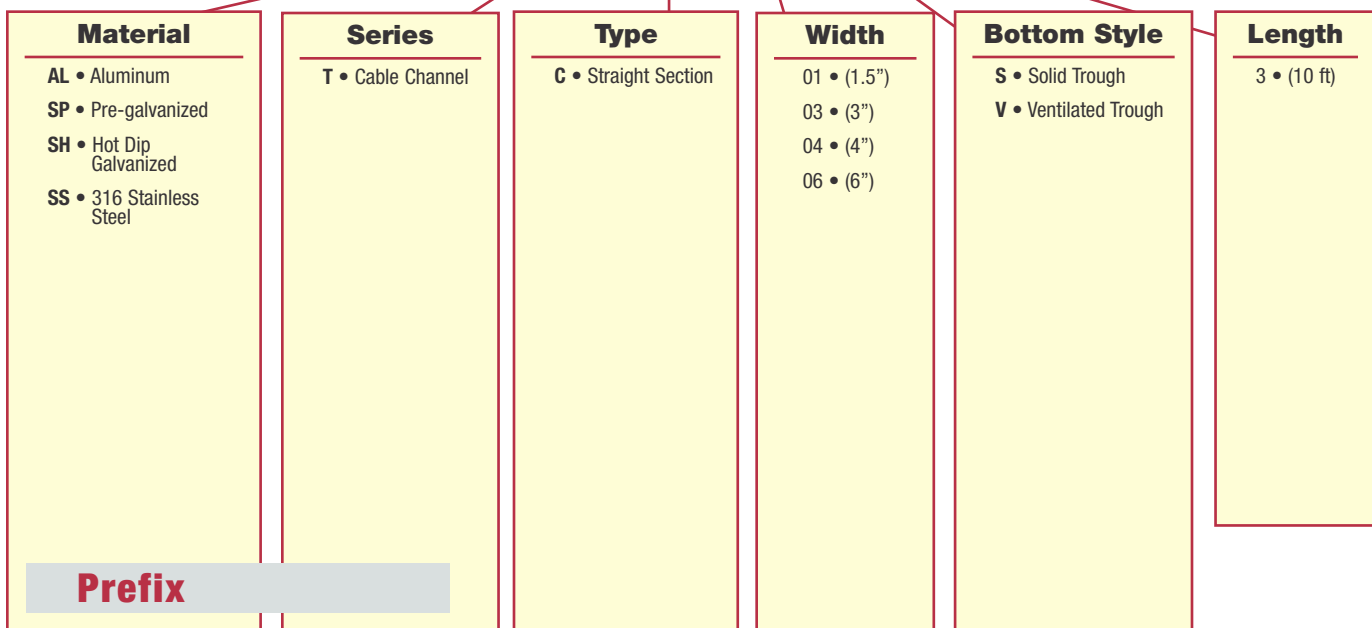
Example: ALTC04V-3

- Aluminum
- 4" wide
- Ventilated bottom
- 10 ft length



Straight Section Number Selection

(ALT) C 04 V-3



Fittings Part Number Selection Guide

Channel Tray

How to create fitting part numbers

1. Select fitting material
2. Select nominal width of fitting
3. Select type of fitting
4. Select degree of angle if required
5. Select radius

Example: ALTF04SHB4512

- Aluminum
- 4" wide
- Horizontal bend
- 45° degree
- 12" radius



Fittings Number Selection

(ALT) F 04 S HB 45 12

Fitting Material	Series	Type	Width	Bottom Style	Fitting Type	Degree*	Radius
AL • Aluminum SP • Pre-galvanized SH • Hot Dip Galvanized SS • 316 Stainless Steel	T • Cable Channel	F • Fitting	01 • (1.5") 03 • (3") 04 • (4") 06 • (6")	S • Solid Trough	HB • Horizontal Bend HT • Horizontal Tee HX • Horizontal Cross VO • Vertical Outside Bend VI • Vertical Inside Bend	30 • 30° 45 • 45° 60 • 60° 90 • 90°	12 • 12" 24 • 24" 0 • Zero* radius *Contact your local sales office for availability
Prefix							

*Required for HB, VI & VO only



Channel Tray

Straight Sections Solid and Ventilated bottom

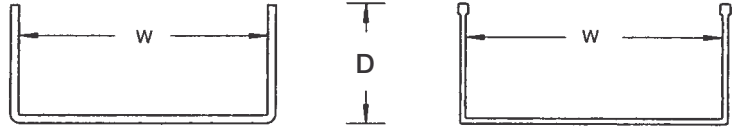


Solid: Steel - Roll Formed Steel. Aluminum - Extruded material.

Ventilated: Pre-punched burr free oblong holes with Ty-Rap® slots between each opening.

Accessories: One connector complete with hardware supplied with each length.

Material: Aluminum-6063-T6
Pre-galvanized
Hot Dip Galvanized
316 Stainless Steel



ALUMINUM SOLID	CHANNEL WIDTH (W)	DEPTH (D)		SUPPORT SPAN (FEET)				
				2	4	6	8	10
ALTC	1.5"	3/4"	Load (lb/ft) Deflection (in.)	47.5 0.170	11.9 0.680	5.4 0.745	3.0 1.325	1.9 2.070
	3"	1-3/8"	Load (lb/ft) Deflection (in.)	362.5 0.083	90.6 0.330	40.3 0.743	22.7 1.322	17.0 2.065
	4"	1-5/8"	Load (lb/ft) Deflection (in.)	580.0 0.065	145.0 0.260	64.4 0.585	36.3 1.041	24.0 1.626
	6"	1-3/4"	Load (lb/ft) Deflection (in.)	607.5 0.061	151.9 0.244	67.5 0.550	38.0 0.977	25.0 1.527

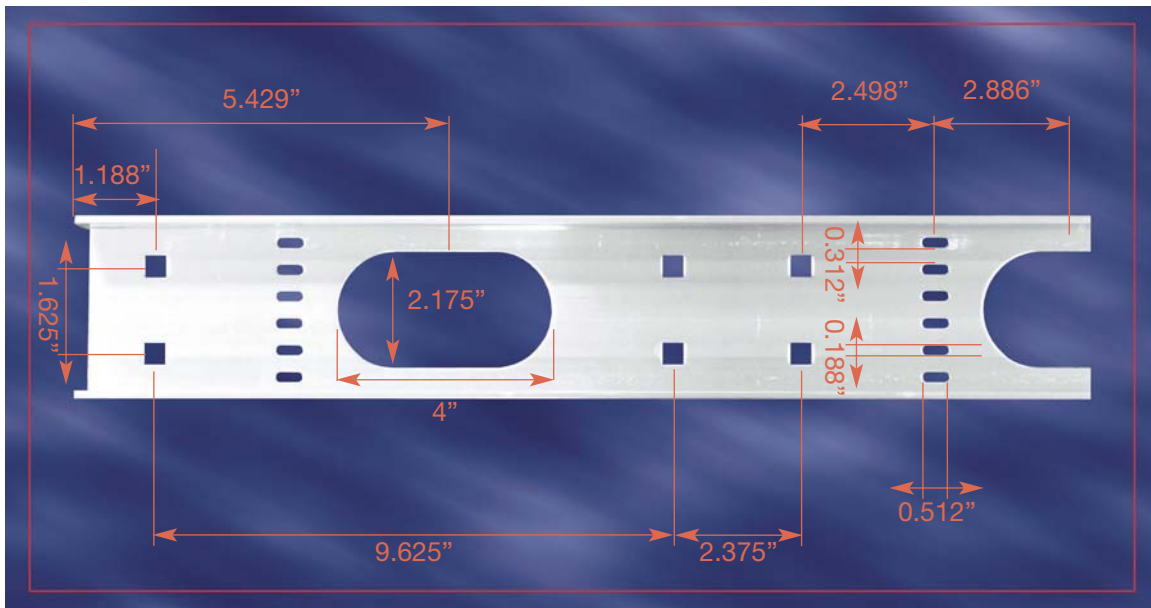
ALUMINUM VENTILATED	CHANNEL WIDTH (W)	DEPTH (D)		SUPPORT SPAN (FEET)				
				2	4	6	8	10
ALTC	1.5"	3/4"	Load (lb/ft) Deflection (in.)	47.5 0.170	11.9 0.680	5.4 0.745	3.0 1.325	1.9 2.070
	3"	1-3/8"	Load (lb/ft) Deflection (in.)	300.0 0.100	75.0 0.400	33.3 0.900	18.8 1.600	14.0 2.500
	4"	1-5/8"	Load (lb/ft) Deflection (in.)	525.0 0.074	131.3 0.295	58.3 0.664	32.8 1.181	19.0 1.846
	6"	1-3/4"	Load (lb/ft) Deflection (in.)	580.0 0.065	145.0 0.261	64.4 0.587	36.3 1.044	21.0 1.631

STEEL SOLID	CHANNEL WIDTH (W)	DEPTH (D)		SUPPORT SPAN (FEET)				
				2	4	6	8	10
SPTC SHTC SSTC	1.5"	3/4"	Load (lb/ft) Deflection (in.)	97.5 0.045	24.4 0.181	10.8 0.408	6.1 0.725	3.9 1.133
	3"	1-3/8"	Load (lb/ft) Deflection (in.)	252.0 0.034	63.0 0.134	28.0 0.302	15.8 0.538	17.0 0.840
	4"	1-5/8"	Load (lb/ft) Deflection (in.)	408.0 0.026	102.0 0.105	45.3 0.237	25.5 0.421	24.0 0.658
	6"	1-3/4"	Load (lb/ft) Deflection (in.)	432.0 0.024	108.0 0.096	48.0 0.217	27.0 0.386	25.0 0.603

STEEL VENTILATED	CHANNEL WIDTH (W)	DEPTH (D)		SUPPORT SPAN (FEET)				
				2	4	6	8	10
SPTC SHTC SSTC	1.5"	3/4"	Load (lb/ft) Deflection (in.)	97.5 0.045	24.4 0.181	10.8 0.408	6.1 0.725	3.9 1.133
	3"	1-3/8"	Load (lb/ft) Deflection (in.)	207.0 0.041	51.8 0.163	23.0 0.366	12.9 0.652	14.0 1.018
	4"	1-5/8"	Load (lb/ft) Deflection (in.)	363.0 0.030	90.8 0.119	40.3 0.269	22.7 0.477	19.0 0.746
	6"	1-3/4"	Load (lb/ft) Deflection (in.)	405.0 0.027	101.3 0.106	45.0 0.239	25.3 0.425	21.0 0.664

Straight Sections Solid and Ventilated

Channel Tray



Bottom view of ventilated Channel Tray larger than 1.5" wide

Dimension / Information

Part Numbering System

ALT C 04 V-3

Material: ALT
 Type: C
 Bottom: 04
 Width: V
 Length Style: 3

Selection Guide

Prefix: **ALT**(Alum.), **SPT**(Pre-Galv.), **SHT**(Hot Dip Galv.)
SST(Stainless Steel)

Inside Channel Widths: **01=1.5"**, **03=3"**, **04=4"**, **06=6"**

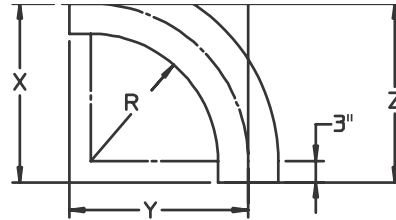
Bottom Styles: **V**- Ventilated, **S**- Solid

Channel Tray



Channel Tray

Horizontal Bends - 90°



Dimension / Information

Part Numbering System

ALT F 06 S HB 90 24

Material | Width | Fitting | Bottom Style | Fitting Type | Angle | Radius

Selection Guide

Prefix: **ALT**(Alum.), **SPT**(Pre-Galv.), **SHT**(Hot Dip Galv.), **SST**(Stainless Steel)

Inside Channel Widths: **01=1.5", 03=3", 04=4", 06=6"**

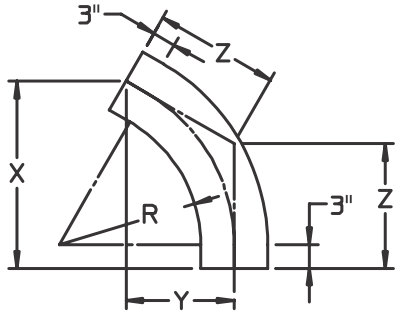
Bottom Styles: **S**- Solid

90° Horizontal BEND				
Radius (in.)	Width (in.)	Catalogue Number	Dimensions (in.)	
R	W		X	Y
12	1.5	(Prefix)-F 01-S-HB90-12	15-3/4	15-3/4
	3	(Prefix)-F 03-S-HB90-12	16-1/2	16-1/2
	4	(Prefix)-F 04-S-HB90-12	17	17
	6	(Prefix)-F 06-S-HB90-12	18	18
24	1.5	(Prefix)-F 01-S-HB90-24	27-3/4	27-3/4
	3	(Prefix)-F 03-S-HB90-24	28-1/2	28-1/2
	4	(Prefix)-F 04-S-HB90-24	29	29
	6	(Prefix)-F 06-S-HB90-24	30	30



Channel Tray

Horizontal Bends - 60°



Dimension / Information

Part Numbering System

SPT F 03 S HB 60 24

Material: SPT, Fitting: F, Width: 03, Bottom Style: S, Angle: HB 60, Radius: 24

Selection Guide

Prefix: **ALT**(Alum.), **SPT**(Pre-Galv.), **SHT**(Hot Dip Galv.), **SST**(Stainless Steel)

Inside Channel Widths: 01=1.5", 03=3", 04=4", 06=6"

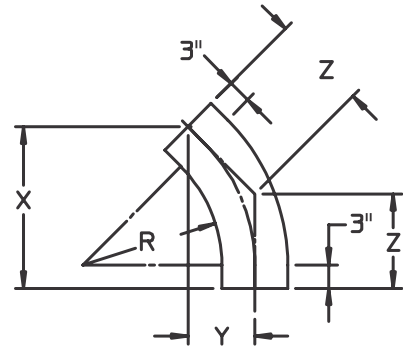
Bottom Styles: **S**- Solid

60° Horizontal BEND					
Radius (in.)	Width (in.)	Catalogue Number	Dimensions (in.)		
R	W		X	Y	Z
12	1.5	(Prefix)-F 01-S-HB60-12	15-1/2	9	10-1/4
	3	(Prefix)-F 03-S-HB60-12	16-3/16	9-3/8	10-13/16
	4	(Prefix)-F 04-S-HB60-12	16-5/8	9-5/8	11-1/16
	6	(Prefix)-F 06-S-HB60-12	17-1/2	10-1/8	11-11/16
24	1.5	(Prefix)-F 01-S-HB60-24	26	15	17-1/4
	3	(Prefix)-F 03-S-HB60-24	26-9/16	15-3/8	17-3/4
	4	(Prefix)-F 04-S-HB60-24	27	15-5/8	18
	6	(Prefix)-F 06-S-HB60-24	27-7/8	16-1/8	18-9/16



Channel Tray

Horizontal Bends - 45°



Part Numbering System

SPT F 03 S HB 45 24

Material: SPT, Fitting: F, Width: 03, Bottom Style: S, Angle: HB, Radius: 45, Part Number: 24

Selection Guide

Prefix: ALT(Alum.), SPT(Pre-Galv.), SHT(Hot Dip Galv.), SST(Stainless Steel)

Inside Channel Widths: 01=1.5", 03=3", 04=4", 06=6"

Bottom Styles: S- Solid

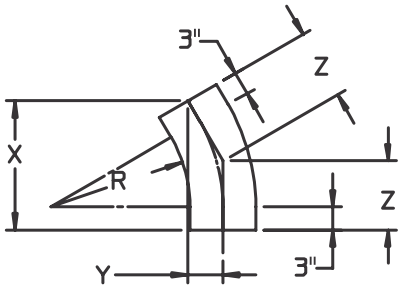
Dimension / Information

45° Horizontal BEND					
Radius (in.)	Width (in.)	Catalogue Number	Dimensions (in.)		
R	W		X	Y	Z
12	1.5	(Prefix)-F 01-S-HB45-12	14-1/8	5-7/8	8-1/4
	3	(Prefix)-F 03-S-HB45-12	14-11/16	6-1/16	8-9/16
	4	(Prefix)-F 04-S-HB45-12	15	6-1/4	8-13/16
	6	(Prefix)-F 06-S-HB45-12	15-3/4	6-1/2	9-3/16
24	1.5	(Prefix)-F 01-S-HB45-24	22-5/8	9-3/8	13-1/4
	3	(Prefix)-F 03-S-HB45-24	23-1/8	9-9/16	13-9/16
	4	(Prefix)-F 04-S-HB45-24	23-1/2	9-3/4	13-3/4
	6	(Prefix)-F 06-S-HB45-24	24-3/16	10	14-3/16



Channel Tray

Horizontal Bends - 30°



Dimension / Information

Part Numbering System

ALT F 06 S HB 30 24

Material: ALT, Fitting: F, Width: 06, Bottom Style: S, Fitting Type: HB, Angle: 30, Radius: 24

Selection Guide

Prefix: **ALT**(Alum.), **SPT**(Pre-Galv.), **SHT**(Hot Dip Galv.), **SST**(Stainless Steel)

Inside Channel Widths: **01=1.5", 03=3", 04=4", 06=6"**

Bottom Styles: **S**- Solid

30° Horizontal BEND					
Radius (in.)	Width (in.)	Catalogue Number	Dimensions (in.)		
R	W		X	Y	Z
12	1.5	(Prefix)-F 01-S-HB30-12	12	3-1/4	6-1/2
	3	(Prefix)-F 03-S-HB30-12	12-3/8	3-5/16	6-5/8
	4	(Prefix)-F 04-S-HB30-12	12-5/8	3-3/8	6-3/4
	6	(Prefix)-F 06-S-HB30-12	13-1/8	3-1/2	7
24	1.5	(Prefix)-F 01-S-HB30-24	18	4-3/4	9-5/8
	3	(Prefix)-F 03-S-HB30-24	18-3/8	4-15/16	9-13/16
	4	(Prefix)-F 04-S-HB30-24	18-5/8	5	9-15/16
	6	(Prefix)-F 06-S-HB30-24	19-1/8	5-1/8	10-1/4

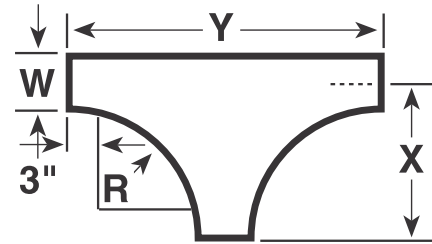


Channel Tray

Horizontal Tee



Horizontal Tee



Dimension / Information

Part Numbering System

SST F 04 S HT 24

Material: SST, Fitting: F, Width: 04, Bottom Style: S, Fitting Type: HT, Radius: 24

Selection Guide

Prefix: ALT(Alum.), SPT(Pre-Galv.), SHT(Hot Dip Galv.), SST(Stainless Steel)

Inside Channel Widths: 01=1.5", 03=3", 04=4", 06=6"

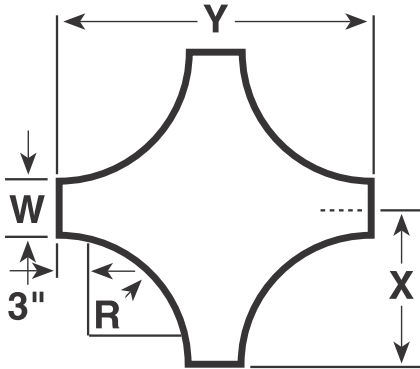
Bottom Styles: S- Solid

Horizontal Tee					
Radius (in.)	Width (in.)	Catalogue Number	Dimensions (in.)		
R	W		X	Y	Z
12	1.5	(Prefix)-F 01-S-HT-12	15-3/4	31-1/2	-
	3	(Prefix)-F 03-S-HT-12	16-1/2	33	-
	4	(Prefix)-F 04-S-HT-12	17	34	-
	6	(Prefix)-F 06-S-HT-12	18	36	-
24	1.5	(Prefix)-F 01-S-HT-24	27-3/4	55-1/2	-
	3	(Prefix)-F 03-S-HT-24	28-1/2	57	-
	4	(Prefix)-F 04-S-HT-24	29	58	-
	6	(Prefix)-F 06-S-HT-24	30	60	-



Channel Tray

Horizontal Cross



Dimension / Information

Part Numbering System

ALT F 04 S HX 24

Material: ALT, Fitting: F, Width: 04, Bottom Style: S, Radius Type: HX, Radius: 24

Selection Guide

Prefix: ALT(Alum.), SPT(Pre-Galv.), SHT(Hot Dip Galv.), SST(Stainless Steel)

Inside Channel Widths: 01=1.5", 03=3", 04=4", 06=6"

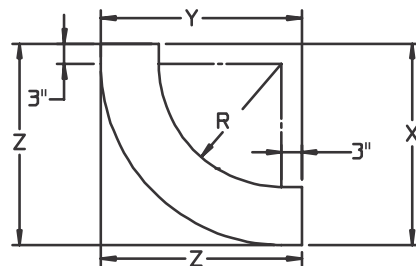
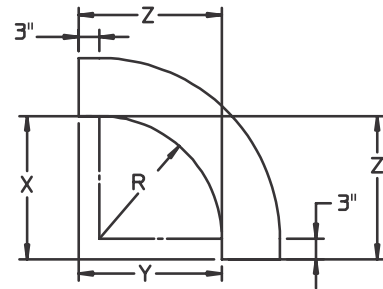
Bottom Styles: S- Solid

Horizontal Cross					
Radius (in.)	Width (in.)	Catalogue Number	Dimensions (in.)		
R	W		X	Y	Z
12	1.5	(Prefix)-F 01-S-HX-12	15-3/4	31-1/2	-
	3	(Prefix)-F 03-S-HX-12	16-1/2	33	-
	4	(Prefix)-F 04-S-HX-12	17	34	-
	6	(Prefix)-F 06-S-HX-12	18	36	-
24	1.5	(Prefix)-F 01-S-HX-24	27-3/4	55-1/2	-
	3	(Prefix)-F 03-S-HX-24	28-1/2	57	-
	4	(Prefix)-F 04-S-HX-24	29	58	-
	6	(Prefix)-F 06-S-HX-24	30	60	-



Channel Tray

Vertical Bends 90° Outside and Inside



Part Numbering System

SPT F 06 S VO 90 24

Material Width Fitting Bottom Radius
Fitting Style Type Angle

Selection Guide

Prefix: **ALT**(Alum.), **SPT**(Pre-Galv.), **SHT**(Hot Dip Galv.),
SST(Stainless Steel)
Inside Channel Widths: **01=1.5", 03=3", 04=4", 06=6"**
Bottom Styles: **S**— Solid

Dimension / Information

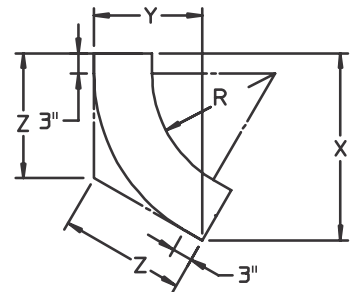
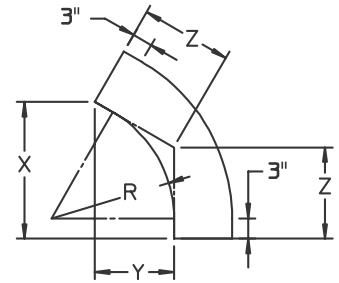
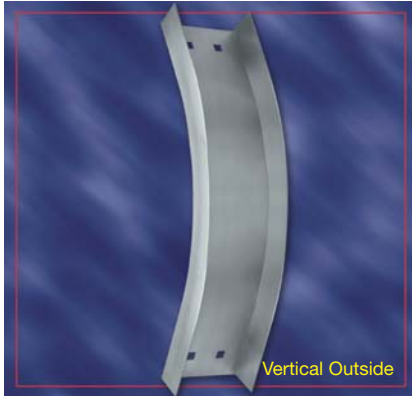
90° Vertical Outside Bend					
Radius R (in.)	Width W (in.)	Catalogue Number	Dimensions (in.)		
			X	Y	
12	1.5	(Prefix)-F 01-S-V090-12	15	15	
	3	(Prefix)-F 03-S-V090-12	15	15	
	4	(Prefix)-F 04-S-V090-12	15	15	
	6	(Prefix)-F 06-S-V090-12	15	15	
24	1.5	(Prefix)-F 01-S-V090-12	15	15	
	3	(Prefix)-F 03-S-V090-12	27	27	
	4	(Prefix)-F 04-S-V090-12	27	27	
	6	(Prefix)-F 06-S-V090-12	27	27	

90° Vertical Inside Bend					
Radius R (in.)	Width W (in.)	Catalogue Number	Dimensions (in.)		
			X	Y	
12	1.5	(Prefix)-F 01-S-VI90-12	15-3/4	15-3/4	
	3	(Prefix)-F 03-S-VI90-12	16-1/2	16-1/2	
	4	(Prefix)-F 04-S-VI90-12	16-7/8	16-7/8	
	6	(Prefix)-F 06-S-VI90-12	16-7/8	16-7/8	
24	1.5	(Prefix)-F 01-S-VI90-24	27-3/4	27-3/4	
	3	(Prefix)-F 03-S-VI90-24	28-1/2	28-1/2	
	4	(Prefix)-F 04-S-VI90-24	28-7/8	28-7/8	
	6	(Prefix)-F 06-S-VI90-24	28-7/8	28-7/8	



Vertical Bends 60° Outside and Inside

Channel Tray



Dimension / Information

Part Numbering System

SST F 04 S VI 60 24

Material: SST, Fitting: F, Width: 04, Bottom Style: S, Fitting Type: VI, Angle: 60, Radius: 24

Selection Guide

Prefix: ALT(Alum.), SPT(Pre-Galv.), SHT(Hot Dip Galv.), SST(Stainless Steel)

Inside Channel Widths: 01=1.5", 03=3", 04=4", 06=6"

Bottom Styles: S- Solid

60° Vertical Outside Bend

Radius R (in.)	Width W (in.)	Catalogue Number	Dimensions (in.)		
			X	Y	Z
12	1.5	(Prefix)-F 01-S-V060-12	14-7/8	8-5/8	9-7/8
	3	(Prefix)-F 03-S-V060-12	14-7/8	8-5/8	9-7/8
	4	(Prefix)-F 04-S-V060-12	14-7/8	8-5/8	9-7/8
	6	(Prefix)-F 06-S-V060-12	14-7/8	8-5/8	9-7/8
24	1.5	(Prefix)-F 01-S-V060-24	25-1/4	14-5/8	16-7/8
	3	(Prefix)-F 03-S-V060-24	25-1/4	14-5/8	16-7/8
	4	(Prefix)-F 04-S-V060-24	25-1/4	14-5/8	16-7/8
	6	(Prefix)-F 06-S-V060-24	25-1/4	14-5/8	16-7/8

60° Vertical Inside Bend

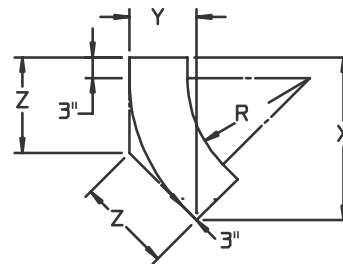
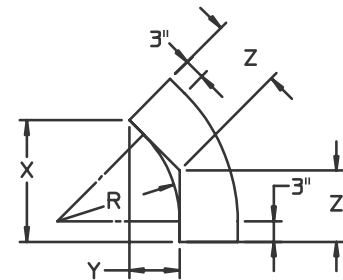
Radius R (in.)	Width W (in.)	Catalogue Number	Dimensions (in.)		
			X	Y	Z
12	1.5	(Prefix)-F 01-S-VI60-12	15-1/2	9	10-1/4
	3	(Prefix)-F 03-S-VI60-12	16-1/8	9-1/4	10-3/4
	4	(Prefix)-F 04-S-VI60-12	16-1/4	9-3/8	10-7/8
	6	(Prefix)-F 06-S-VI60-12	16-3/8	9-1/2	11
24	1.5	(Prefix)-F 01-S-VI60-24	26	15	17-1/4
	3	(Prefix)-F 03-S-VI60-24	26-1/2	15-1/4	17-5/8
	4	(Prefix)-F 04-S-VI60-24	26-3/4	15-3/8	17-3/4
	6	(Prefix)-F 06-S-VI60-24	26-3/4	15-1/2	17-7/8

Channel Tray



Channel Tray

Vertical Bends 45° Outside and Inside



Part Numbering System

SST F 04 S VI 45 24

Material Width Fitting Bottom Angle Radius
Fitting Style

Selection Guide

Prefix: **ALT**(Alum.), **SPT**(Pre-Galv.), **SHT**(Hot Dip Galv.),
SST(Stainless Steel)
Inside Channel Widths: **01=1.5"**, **03=3"**, **04=4"**, **06=6"**
Bottom Styles: **S**– Solid

Dimension / Information

45° Vertical Outside Bend

Radius R (in.)	Width W (in.)	Catalogue Number	Dimensions (in.)		
			X	Y	Z
12	1.5	(Prefix)-F 01-S-V045-12	13-5/8	5-5/8	8
	3	(Prefix)-F 03-S-V045-12	13-5/8	5-5/8	8
	4	(Prefix)-F 04-S-V045-12	13-5/8	5-5/8	8
	6	(Prefix)-F 06-S-V045-12	13-5/8	5-5/8	8
24	1.5	(Prefix)-F 01-S-V045-12	22-1/8	9-1/8	12-7/8
	3	(Prefix)-F 03-S-V045-12	22-1/8	9-1/8	13
	4	(Prefix)-F 04-S-V045-12	11	11	13
	6	(Prefix)-F 06-S-V045-12	11	11	13

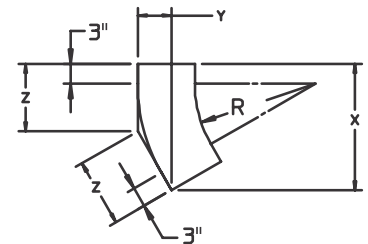
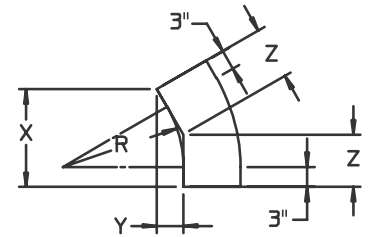
45° Vertical Inside Bend

Radius R (in.)	Width W (in.)	Catalogue Number	Dimensions (in.)		
			X	Y	Z
12	1.5	(Prefix)-F 01-S-VI45-12	14-1/8	5-1/8	9
	3	(Prefix)-F 03-S-VI45-12	14-5/8	6	8-1/2
	4	(Prefix)-F 04-S-VI45-12	14-3/4	7-1/8	8-5/8
	6	(Prefix)-F 06-S-VI45-12	14-7/8	11	8-3/4
24	1.5	(Prefix)-F 01-S-VI45-24	22-5/8	8-5/8	13-1/2
	3	(Prefix)-F 03-S-VI45-24	23	9-1/2	13-1/2
	4	(Prefix)-F 04-S-VI45-24	23-1/4	9-5/8	13-5/8
	6	(Prefix)-F 06-S-VI45-24	23-3/8	9-5/8	13-5/8



Vertical Bends 30° Outside and Inside

Channel Tray



Dimension / Information

Part Numbering System

SPT F 06 S VO 30 24

Material: SPT, Fitting: F, Width: 06, Bottom Style: S, Fitting Type: VO, Angle: 30, Radius: 24

Selection Guide

Prefix: ALT(Alum.), SPT(Pre-Galv.), SHT(Hot Dip Galv.), SST(Stainless Steel)

Inside Channel Widths: 01=1.5", 03=3", 04=4", 06=6"

Bottom Styles: S- Solid

30° Vertical Outside Bend						
Radius R (in.)	Width W (in.)	Catalogue Number	Dimensions (in.)			
			X	Y	Z	
12	1.5	(Prefix)-F 01-S-V030-12	10-1/8	1-7/8	5-1/4	
	3	(Prefix)-F 03-S-V030-12	11-5/8	3-1/8	6-1/8	
	4	(Prefix)-F 04-S-V030-12	11-5/8	3-1/8	6-1/8	
	6	(Prefix)-F 06-S-V030-12	11-5/8	3-1/8	6-1/8	
24	1.5	(Prefix)-F 01-S-V030-12	17-5/8	4-3/4	9-1/2	
	3	(Prefix)-F 03-S-V030-12	17-5/8	4-3/4	9-1/4	
	4	(Prefix)-F 04-S-V030-12	17-5/8	4-3/4	9-1/4	
	6	(Prefix)-F 06-S-V030-12	17-5/8	4-3/4	9-1/4	

30° Vertical Inside Bend						
Radius R (in.)	Width W (in.)	Catalogue Number	Dimensions (in.)			
			X	Y	Z	
12	1.5	(Prefix)-F 01-S-VI30-12	10-3/8	1-7/8	5-3/8	
	3	(Prefix)-F 03-S-VI30-12	12-1/4	3-1/2	6-3/8	
	4	(Prefix)-F 04-S-VI30-12	12-3/8	3-3/8	5-5/8	
	6	(Prefix)-F 06-S-VI30-12	12-1/2	3-3/8	5-5/8	
24	1.5	(Prefix)-F 01-S-VI30-24	18	4-3/4	9-5/8	
	3	(Prefix)-F 03-S-VI30-24	18-1/4	4-7/8	9-3/4	
	4	(Prefix)-F 04-S-VI30-24	18-3/8	4-7/8	9-7/8	
	6	(Prefix)-F 06-S-VI30-24	18-1/2	5	9-7/8	

Channel Tray



Channel Tray

Straight Sections Covers Part Number Selection Guide

Tray Covers

Tray covers are available for all widths of tray. They should be installed where falling objects may damage cables or where vertical tray run is accessible by pedestrian or vehicular traffic.

Straight Covers

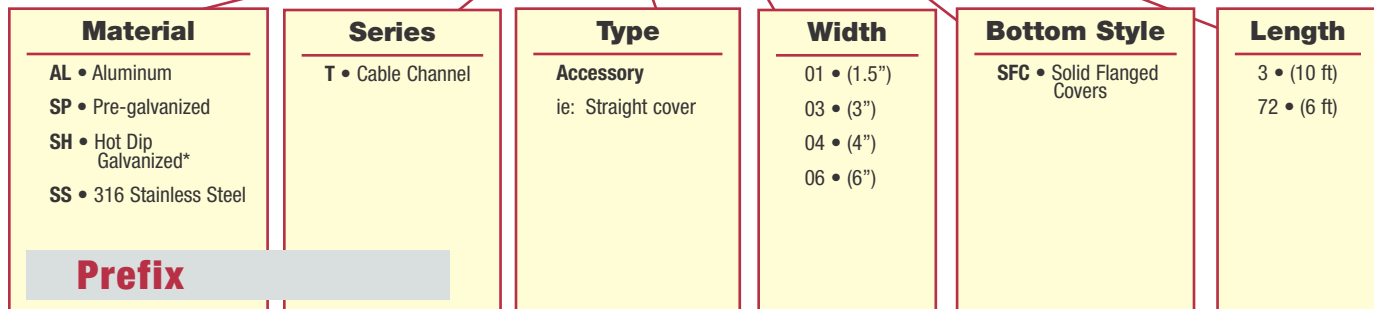
These covers provide maximum mechanical protection for cables with limited heat build up. Flanged covers have 1/2" flange.



Note: Cover mounting hardware must be ordered separately.

Straight Section Number Selection

(ALT) F 03 SFC 3



*Hot Dip Galvanized Covers only available in 1500 mm lengths.

Quantity of Standard Cover Clamps Required

Straight section (10 ft) 6 pcs.

Note: When using the Heavy Duty Cover Clamps, only half the quantity of pieces are required.



Fitting Covers Part Number Selection Guide

Channel Tray

Tray Covers

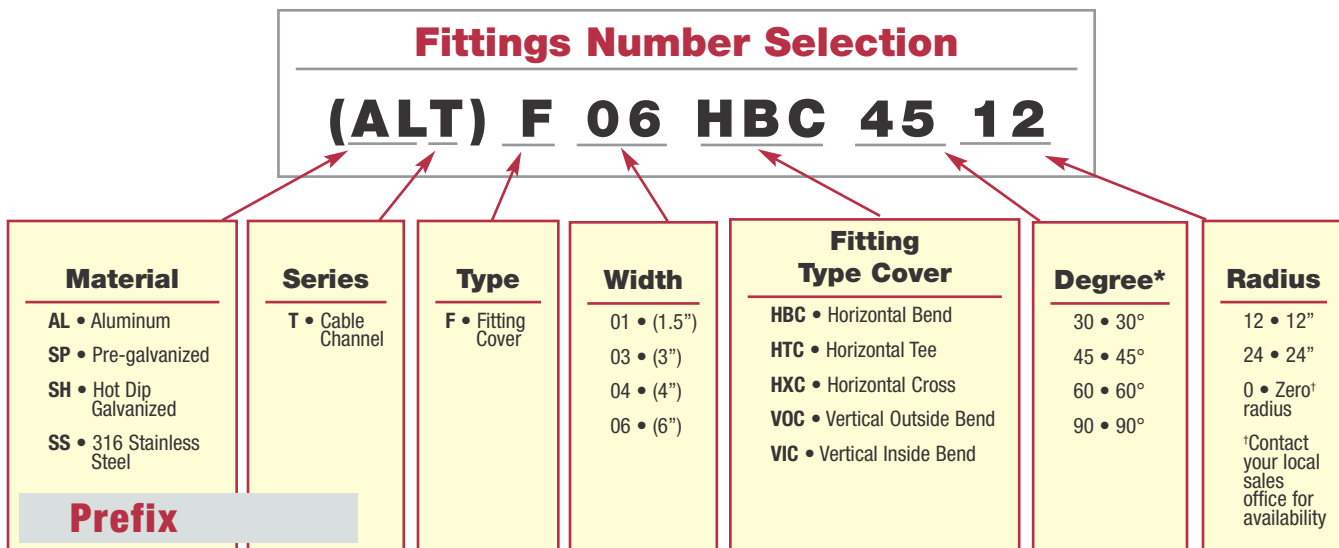
Tray covers are available for all widths of tray. They should be installed where falling objects may damage cables or where vertical tray run is accessible by pedestrian or vehicular traffic.

Fitting Covers

Fitting covers are available to complete your cable channel layout. All fitting covers are flanged.



Note: Cover mounting hardware must be ordered separately.



*Required for HB, VI & VO only

Quantity of Standard Cover Clamps Required	
Horizontal and Vertical Bends	4 pcs.
Tees	6 pcs.
Crosses	8 pcs.
Note: When using the Heavy Duty Cover Clamps, only half the quantity of pieces are required.	

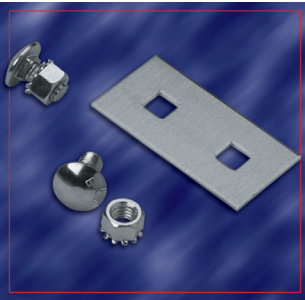


Selection Guide

Prefix: **ALT**(Alum.), **SPT**(Pre-Galv.), **SHT**(Hot Dip Galv.),
SST(Stainless Steel)

Inside Channel Widths: **01=1.5"**, **03=3"**, **04=4"**, **06=6"**

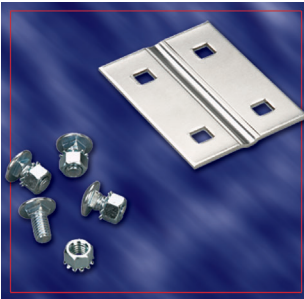
Standard 1.5" Splice Plate



Width	Catalogue Number
1.5"	(Prefix)-W-01-CCS

Supplied standard with each length.

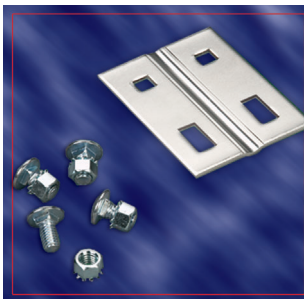
Standard Splice Plate



Width	Catalogue Number
3"	(Prefix)-W-03-CCS
4"	(Prefix)-W-04-CCS
6"	(Prefix)-W-06-CCS

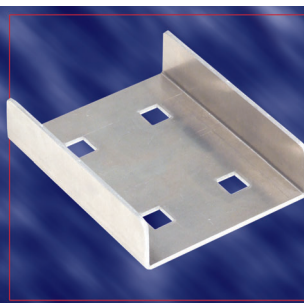
Supplied standard with each length.

Expansion Splice Plate



Width	Catalogue Number
3"	(Prefix)-W-03-ESP
4"	(Prefix)-W-04-ESP
6"	(Prefix)-W-06-ESP

Wrap Around Splice Plate



Width	Catalogue Number
1.5"	(Prefix)-W-01-ACS
3"	(Prefix)-W-03-ACS
4"	(Prefix)-W-04-ACS
6"	(Prefix)-W-06-ACS



Selection Guide

Prefix: **ALT**(Alum.), **SPT**(Pre-Galv.), **SHT**(Hot Dip Galv.),
SST(Stainless Steel)

Inside Channel Widths: **01=1.5"**, **03=3"**, **04=4"**, **06=6"**

Adjustable Horizontal Splice Plate



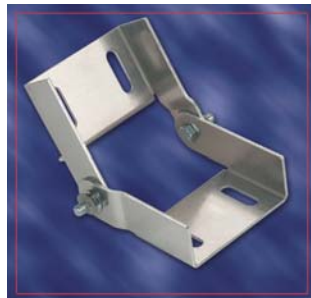
Width	Catalogue Number
1.5"	(Prefix)-W-01-CHA
3"	(Prefix)-W-03-CHA
4"	(Prefix)-W-04-CHA
6"	(Prefix)-W-06-CHA

Standard Vertical Adjustable Splice Plate



Width	Catalogue Number
1.5"	(Prefix)-W-01-CCV
3"	(Prefix)-W-03-CCV
4"	(Prefix)-W-04-CCV
6"	(Prefix)-W-06-CCV

Wrap Around Vertical Adjustable Splice Plate



Width	Catalogue Number
1.5"	(Prefix)-W-01-WAV
3"	(Prefix)-W-03-WAV
4"	(Prefix)-W-04-WAV
6"	(Prefix)-W-06-WAV

Standard Hold Down Clamp



Width	Catalogue Number
1.5"	(Prefix)-W-01-SHC
3"	(Prefix)-W-03-SHC
4"	(Prefix)-W-04-SHC
6"	(Prefix)-W-06-SHC



Selection Guide

Prefix: **ALT**(Alum.), **SPT**(Pre-Galv.), **SHT**(Hot Dip Galv.),
SST(Stainless Steel)

Inside Channel Widths: **01=1.5", 03=3", 04=4", 06=6"**

Channel Expansion Guide Clamp



Width	Catalogue Number
1.5"	(Prefix)-W-01-CEG
3"	(Prefix)-W-03-CEG
4"	(Prefix)-W-04-CEG
6"	(Prefix)-W-06-CEG

Combination Hold Down / Cover Clamp



Width	Catalogue Number
1.5"	(Prefix)-W-01-CCC
3"	(Prefix)-W-03-CCC
4"	(Prefix)-W-04-CCC
6"	(Prefix)-W-06-CCC

Heavy Duty Cover Clamp



Width	Catalogue Number
1.5"	(Prefix)-W-01-HCC
3"	(Prefix)-W-03-HCC
4"	(Prefix)-W-04-HCC
6"	(Prefix)-W-06-HCC

Closed End Plate



Width	Catalogue Number
1.5"	(Prefix)-W-01-CEP
3"	(Prefix)-W-03-CEP
4"	(Prefix)-W-04-CEP
6"	(Prefix)-W-06-CEP



Selection Guide

Prefix: **ALT**(Alum.), **SPT**(Pre-Galv.), **SHT**(Hot Dip Galv.),
SST(Stainless Steel)

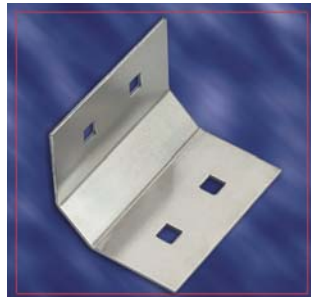
Inside Channel Widths: **01=1.5"**, **03=3"**, **04=4"**, **06=6"**

Channel Mounting Bracket



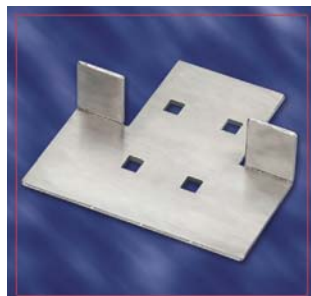
Width	Catalogue Number
1.5"	(Prefix)-W-01-CCB
3"	(Prefix)-W-03-CCB
4"	(Prefix)-W-04-CCB
6"	(Prefix)-W-06-CCB

Channel to Cable Tray Plate



Width	Catalogue Number
1.5"	(Prefix)-W-01-CCT
3"	(Prefix)-W-03-CCT
4"	(Prefix)-W-04-CCT
6"	(Prefix)-W-06-CCT

Channel Straight Reducer Plate



Width	Catalogue Number
3" to 1"	(*)-W-03-01-RSP
4" to 1"	(*)-W-04-01-RSP
6" to 1"	(*)-W-06-01-RSP
4" to 3"	(*)-W-04-03-RSP
6" to 3"	(*)-W-06-03-RSP
6" to 4"	(*)-W-06-04-RSP

Channel to Floor Base Plate



Width	Catalogue Number
1.5"	(Prefix)-W-01-CBP
3"	(Prefix)-W-03-CBP
4"	(Prefix)-W-04-CBP
6"	(Prefix)-W-06-CBP

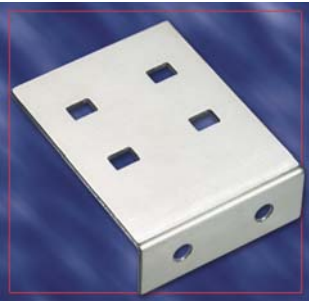


Selection Guide

Prefix: **ALT**(Alum.), **SPT**(Pre-Galv.), **SHT**(Hot Dip Galv.),
SST(Stainless Steel)

Inside Channel Widths: **01=1.5"**, **03=3"**, **04=4"**, **06=6"**

Channel to Tray Mounting Bracket



Width	Catalogue Number
1.5"	(Prefix)-W-01-TCB
3"	(Prefix)-W-03-TCB
4"	(Prefix)-W-04-TCB
6"	(Prefix)-W-06-TCB

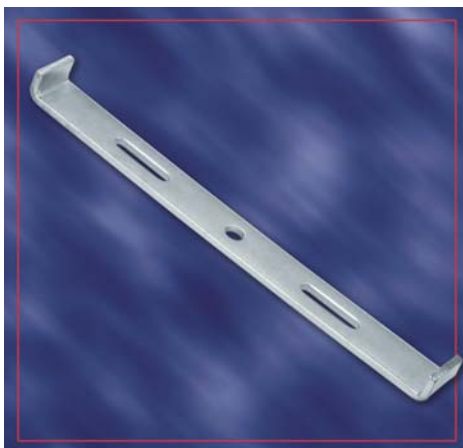
Single Channel Hanger



Width	Catalogue Number
For use with all widths	SPT-W-06-CCH SHT-W-06-CCH

Note: Designed for use with 1/2" threaded rod

Double Channel Hanger

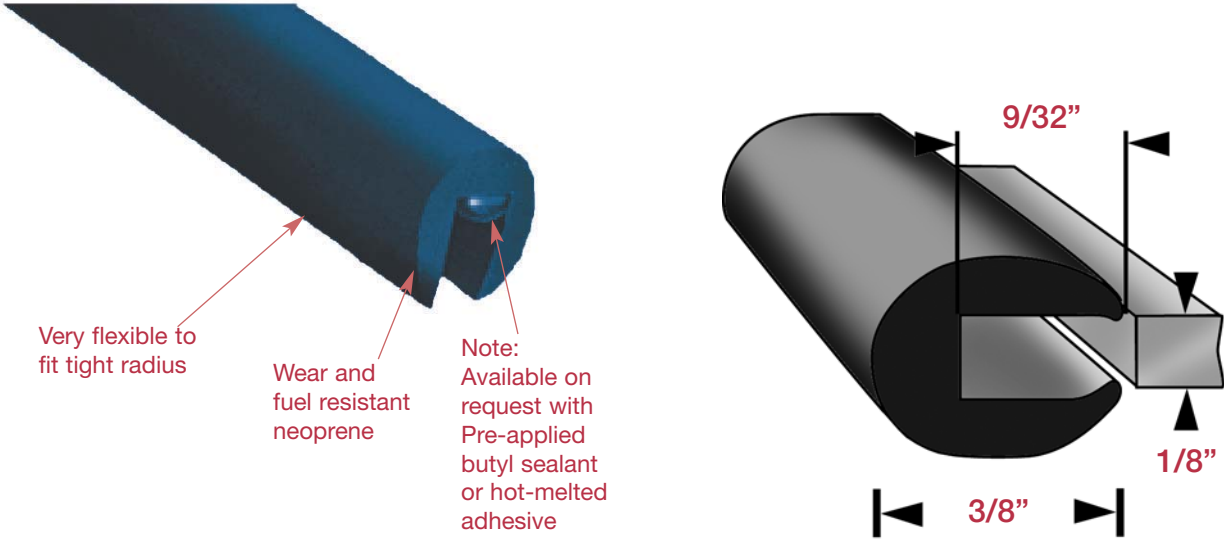


Width	Catalogue Number
For use with all widths	SPT-W-06-DCH SHT-W-06-DCH

Note: Designed for use with 1/2" threaded rod



Channel Rubber Edge Trim



Width	Catalogue Number	Description
For use with 3", 4" and 6"	RET-BUSH	Rubber edge trim - 10-3/4" Bushing - Standard pack of 10
For use with all widths	RET-50	Rubber edge trim - 50 foot roll
For use with all widths	RET-500	Rubber edge trim - 500 foot roll

Product Specifications: Recommended temperature range: -40°C through -106°C.
Base Material: Dense Neoprene Rubber.

