

## Lay-in lug connectors



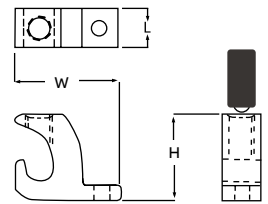
### Copper lay-in lug connectors

- Ideal for swimming pool grounding applications
- Carries “DB” marking for direct burial
- Open-faced design enables installer to quickly lay in the grounding conductor as a jumper to multiple conduits with no break in the ground conductor



Cat. no.	Conductor range		Stud size		Dimensions					
	AWG	mm <sup>2</sup>	in.	mm	H		W		L	
					in.	mm	in.	mm	in.	mm
CULL414	4-14	16-1.5	0.22	5.59	0.78	19.81	0.38	9.65	1.07	27.18
CULL414TP*	4-14	16-1.5	0.22	5.59	0.78	19.81	0.38	9.65	1.07	27.18

Diagram



\* Tin-plated.  
90 °C rating.



### Blackburn lay-in lug



Cat. no.	Conductor range		Stud size	
	AWG	mm <sup>2</sup>	in.	mm
LL414	#4-#14	16-1.5	0.22	5.59
LL1014	1/0-#14	50-1.5	0.27	6.86
LL306	3/0-#6	70-16	0.33	8.38
LL2506	250-#6	120-16	0.33	8.38

These grounding connectors are dual rated for aluminum and copper conductors.  
The open-face design allows the installer to quickly lay in the grounding conductor as a jumper.

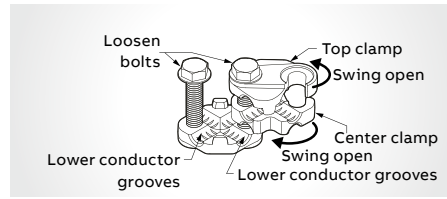
## Lay-in lug connectors



Mechanical lay-in ground connector

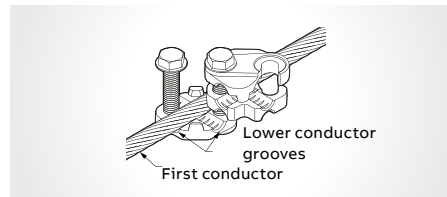


Cat. no.	Range (AWG or kcmil)	Torque
MLG25020	250 through 2/0 stranded	40 feet/pounds



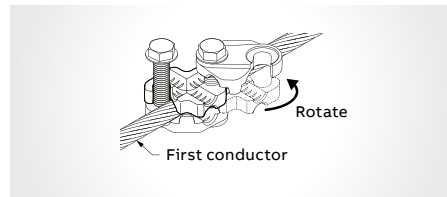
**Step 1**

- Open grounding connector by loosening bolts
- Swing top and center clamps to the side to expose lower conductor grooves.



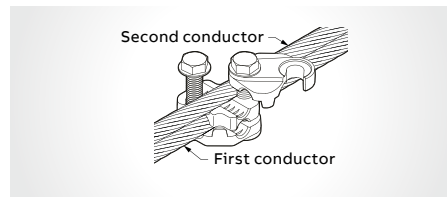
**Step 2**

- Lay in first conductor into lower conductor groove



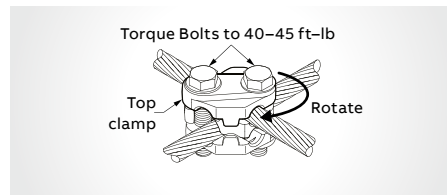
**Step 3**

- Rotate center clamp into position over first conductor



**Step 4**

- Lay in second conductor into center clamp groove (parallel conductor style is shown)



**Step 5**

- When conductors are in place, rotate top clamp over the second conductor and torque bolts to 40-45 ft-lb (cross conductor style is shown)