

Copper lugs

Copper tin-plated one-hole lugs



L 750-48

Tin-plated lugs resist corrosion

- Provides high conductivity
- Minimizes voltage drop
- Easy identification
- UL listed and CSA certified

Copper tin-plated one-hole lugs



Cat. no.	Wire size		Installing dies
	(AWG or kcmil)	Bolt size (in.)	
L 8-10	#8	10	TC, 21, 171, 236
L 8-14		1/4	
L 8-38		3/8	
L 8-48		1/2	
L 6-10	#6	10	7, TE, 24
L 6-14		1/4	
L 6-516		5/16	
L 6-38		3/8	
L 4-14	#4	1/4	
L 4-516		5/16	
L 4-38		3/8	
L 2-14	#2	1/4	3/8, 10, TL-TN, 33, 162
L 2-516		5/16	
L 2-38		3/8	
L 2-48		1/2	
L 1-14	#1	1/4	11, TB, 37
L 1-516		5/16	
L 1-38		3/8	
L 1-48		1/2	
L 1/0-516	1/0	5/16	1/2, 12, TQ, 42, 163
L 1/0-38		3/8	
L 1/0-48		1/2	
L 2/0-516	2/0	5/16	13, TS, 45, 164, 241
L 2/0-38		3/8	
L 2/0-48		1/2	



Cat. no.	Wire size		Installing dies
	(AWG or kcmil)	Bolt size (in.)	
L 3/0-516	3/0	5-16	5/8, 14, TU, 50, 243, BG
L 3/0-38		3/8	
L 3/0-48		1/2	
L 4/0-516	4/0	5/16	15, TW-TY, 54, 243
L 4/0-38-HM		3/8	
L 4/0-48		1/2	
L 250-38	250	3/8	11/16, 16, TR, 60, 166
L 250-48		1/2	
L 300-38	300	3/8	781, 17, TV, 66
L 300-48		1/2	
L 300-58		5/8	
L 350-38	350	3/8	840, 18, TX, 71
L 350-48		1/2	
L 350-58		5/8	
L 400-48	400	1/2	840, 19, TX, 76
L 400-58		5/8	
L 500-48	500	1/2	20, TH, 87, 281
L 500-58		5/8	
L 600-48	600	1/2	1 1/8-1, 96
L 600-58		5/8	
L 750-48	750	1/2	1 1/8-2, 106
L 750-58		5/8	
L 750-68		3/4	
L 1000-48	1000	1/2	642, 125
L 1000-58		5/8	
L 1000-68		3/4	

Copper lugs

Tin-plated two-hole straight and stacking NEMA lugs for general applications



L 2/0 N



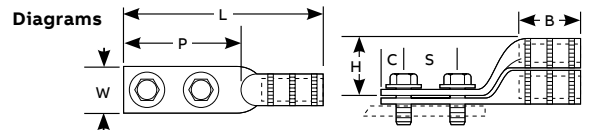
L 1000 NT

- Provides high conductivity
- Minimizes voltage drop
- Resists corrosion
- Provides 3/4" and 7/8" bolt hole centers for added versatility
- UL listed and CSA certified

Tin-plated two-hole straight and stacking NEMA lugs for general applications



Straight lug Cat. no.	Stacking lug Cat. no.	Wire size (AWG or kcmil)	Bolt size (in.)	Installing dies	Dimensions (in.)							
					B	C	L	P	S	W	H	
L 6-214	-	#6	1/4	7, TE, 27	1 1/8	5/16	2 13/16	1 5/16	5/8	7/16	-	
L 6-2516	-		5/16		1 1/8	5/16	2 11/16	1 5/16	5/8	7/16	-	
L 6 N	-		1/2		1 1/8	5/8	5	3 3/8	1 3/4	3/4	-	
L 4-214	-	#4	1/4	5/16, 8, TP, 29, IC, 1	1 1/8	5/16	2 3/4	1 5/16	5/8	1/2	-	
L 4-2516	-		5/16		1 1/8	5/16	2 3/4	1 5/16	5/8	1/2	-	
L 4 N	-		1/2		1 1/8	5/8	5	3 3/8	1 3/4	3/4	-	
L 2-214	-	#2	1/4	3/8, 10, TL-TN, 33, 162	1 1/4	3/8	3 3/8	1 1/2	5/8	5/8	-	
L 2-2516	-		5/16		1 1/4	3/8	3 5/16	1 5/8	3/4 - 7/8	5/8	-	
L 2 N	-		1/2		1 1/4	5/8	4 3/4	3	1 5/16	3/4	-	
L 1-214	-	#1	1/4	3/8, 11, TB, 37	1 3/8	3/8	3 3/8	1 5/8	5/8	11/16	-	
L 1-2516	-		5/16		1 1/2	5/16	3 3/8	1 5/8	3/4 - 7/8	11/16	-	
L 1 N	-		1/2		1 1/2	5/8	4 7/8	3	1 3/4	3/4	-	
L 1/0-238	-	1/0	3/8	1/2, 12, TQ, 42, 163	1 3/8		3 7/16	1 5/8	7/8	3/4	-	
L 1/0-2516	-		5/16		1 3/8		3 7/16	1 5/8	3/4 - 7/8	3/4	-	
L 1/0 N	-		1/2		1 7/8		4 7/8	3	1 3/4	3/4	-	
L 2/0-238	-	2/0	3/8	5/16, 13, TS, 45, 164	1 1/2		5 1/16		7/8		-	
L 2/0 N	SL 2/0 N		1/2		1 1/2		5 1/16		7/8	1 1/2	-	
L 3/0-238	-	3/0	3/8	5/8, 14, TU, 50, BG	1 1/2		5 3/8		15/16	-	-	
L 3/0 N	SL 3/0 N		1/2		1 1/2		5 3/8		15/16	1 5/8	-	
L 4/0-238	-	4/0	3/8	5/8-1, 15, TW-TY, 54, 243	1 5/8		5 3/16		11/16	-	-	
L 4/0 N	SL 4/0 N		1/2		1 5/8		5 3/16		11/16	1 9/16	-	
L 250-238	-	250	3/8	11/16, 16, TR, 60, 116	1 11/16		5 3/16		1 3/8	-	-	
L 250 N	SL 250 N		1/2		1 11/16		5 7/16		1 3/8	1 1/16	-	
L 300-238	-	300	3/8	781, 17, TV, 66, 11/16	2		5 3/4		1 3/4	-	-	
L 300 N	SL 300 N		1/2		2		5 3/4		1 3/4	1 3/4	-	
L 350-238	-	350	3/8	840, 18, TX, 71	2		5 3/4		1 15/16	-	-	
L 350 N	SL 350 N		1/2		1 7/8		5 3/4		1 15/16	-	-	
L 400-238	-	400	3/8	15/16, 19, TX, 76, 840	2 1/8		6	3 1/16	1 7/16	-	-	
L 400 N	SL 400 N		1/2		2 1/8		6	3 3/8	1 7/16	2 1/8	-	
L 500 N	SL 500 N	500	1/2	1, 20, TH, 87, 251	2 1/4		6 1/16	3 3/8	1 9/16	-	-	
L 600 N	SL 600 N	600	1/2	1 (3/8-1), 22, 96	2 5/8		6 3/4	3 3/8	1 11/16	2 3/16	-	
L 750 N	SL 750 N	750	1/2	1 5/16, 106, 24	2 13/16		7	3 3/8	1 3/4	2 5/8	-	
L 1000 NT	SL 1000 NT	1000	1/2	27, 1 1/2, 125	2 15/16		7 1/4	3 3/4	1 3/4	3	-	
L 1250 N*	-	1250	1/2	150, 29, 1 5/8	3		7 3/8	3 3/8	2 3/16	-	-	
L 1500 N*	-	1500	1/2	1 3/4, 31, 150	3 3/16		7 1/2	3	2 11/16	-	-	
L 2000 N*	-	2000	1/2	2.00, 34, 175	3 3/16		8 1/16	3 3/16	3 3/16	-	-	



The "N" suffix on the catalogue number indicates NEMA bolt spacing of 1 3/4". For other available sizes, please consult your ABB representative.
 * L 1250 N, L 1500 N and L 2000 N are not UL listed or CSA certified.

Copper lugs

Tin-plated four-hole NEMA lugs



L 1500 4N

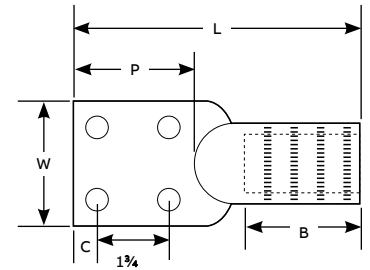
These four-hole NEMA lugs are great for a standard installation

- Resistance against corrosion
- Easy identification

Tin-plated four-hole NEMA lugs

Cat. no.	Wire size (AWG or kcmil)	Bolt size (in.)	Installing dies	Dimensions (in.)					
				B	C	L	P	W	
L 750 4N	750	½	106, 21, 209, 1 ⁵ / ₁₆	4 ³ / ₈	5/ ₈	8 ⁷ / ₈	3 ³ / ₁₆	3	
L 1000 4N	1,000	½	786, 1½, 27, 125, 642	4 ³ / ₈	5/ ₈	9 ¹ / ₈	3 ⁵ / ₁₆	3	
L 1500 4N	1,500	½	1¾, 31, 150, 302	3 ³ / ₁₆	5/ ₈	7½	3	2 ⁵ / ₈	
L 2000 4N	2,000	½	2.00, 34, 175	3 ³ / ₁₆	5/ ₈	8 ³ / ₁₆	3 ³ / ₁₆	3 ¹ / ₁₆	

Diagram



Copper lugs

Heavy-duty two-hole NEMA lugs



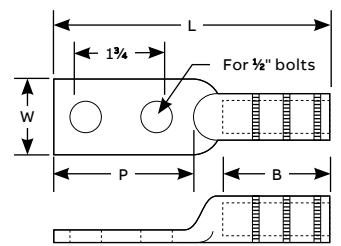
- Heavy-wall lugs for grounding and other critical applications
- Able to handle the most severe heavy-loading applications
- Ease cable insertion

Heavy-duty two-hole NEMA lugs

Meets IEEE 837-2014 requirements

Cat. no.	Wire size (AWG or kcmil)	Installing dies*	Dimensions (in.)			
			B	L	P	W
HDL 2 N	#2	15508SS	1½	5¼	3	13/16
HDL 1 N	#1	15526SS	1½	5¼	3	13/16
HDL 1/0 N	1/0	15530SS	1½	5¼	3	13/16
HDL 2/0 N	2/0	15511SS	1¾	5½	3	15/16
HDL 3/0 N	3/0	15532SS	1 ¹¹ / ₁₆	5 ³ / ₁₆	3	1
HDL 4/0 N	4/0	15514SS	1¾	5 ⁵ / ₈	3	1 ¹ / ₈
HDL 250 N	250	15517SS	1¾	5 ⁵ / ₈	3	1 ¹ / ₄
HDL 300 N	300	15506SS	2¼	5 ¹³ / ₁₆	3	1 ³ / ₈
HDL 350 N	350	15503SS	2 ⁵ / ₁₆	6 ⁹ / ₁₆	3	1 ¹ / ₁₆
HDL 500 N	500	15609SS	2 ⁵ / ₈	6 ³ / ₈	3	1 ³ / ₄
HDL 750 N**	750	Consultez votre représentant ABB.	3 ⁵ / ₈	7 ³ / ₁₆	3	2 ³ / ₁₆
HDL 1000 N**	1,000	Consultez votre représentant ABB.	4 ⁵ / ₈	9 ⁵ / ₈	3 ⁵ / ₈	2 ⁵ / ₈

Diagram



Note: For tin plating, add suffix "-TN" after the catalogue number.
For oxide-inhibiting compound, contact your ABB representative.

*These dies may be used with the TBM15CR-LI or TBM15I compression tools. Please note that the die adapter 15500-TB is required for use with these tools.

** Do not meet IEEE 837-2014 requirements.

Copper lugs

Copper heavy-duty four-hole NEMA lugs



HDL 4/0 4N

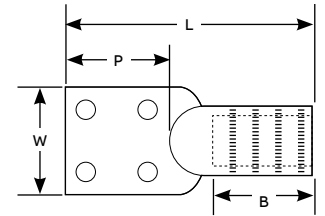
Heavy-wall lugs for grounding and other critical applications

- Able to handle the most severe heavy-loading applications
- Ease cable insertion

Copper heavy-duty four-hole NEMA lugs

Cat. no.	Wire size (AWG or kcmil)	Installing dies	Dimensions (in.)			
			B	L	P	W
HDL 4/0 4N	4/0	71, 168, 840	1 $\frac{3}{4}$	4 $\frac{3}{4}$	3	3
HDL 350 4N	350	96, 267, 1 ($\frac{1}{8}$ -1)	2 $\frac{5}{16}$	6 $\frac{9}{16}$	3	3
HDL 500 4N	500	112, 210, 1 $\frac{1}{16}$	3 $\frac{1}{8}$	6 $\frac{3}{8}$	3	3
HDL 750 4N	750	138, 627, 1 $\frac{1}{8}$	3 $\frac{1}{8}$	8 $\frac{1}{4}$	3	3

Diagram



For tin-plated option, add "-TN" suffix to the catalogue number.
For oxide-inhibiting compound, please consult your ABB representative.