
A

Iberville®/Nutek®/Steel City®/Carlton® - Boxes and covers



—

A

**Iberville/Nutek/Steel City/Carlton -
Boxes and covers**

Table of contents

Section A

Boxes and Covers Iberville/NuTek/Carlton	A4
Device boxes	A17
4 in. octagonal boxes	A35
4 in. square boxes	A39
4^{11/16} in. square boxes	A45
Utility boxes and covers	A47
Concrete rings and accessories	A49
Concrete rings / mud boxes	A50
Masonry boxes and accessories	A51
347 V Boxes	A52
Power / communication	A57
Pre-ganged boxes	A59
Extension rings	A60
Rework boxes	A61
Steel stud boxes	A63
Bar hangers and brackets	A67
Brackets, clamps, partitions	A70
Accessories	A71
Low voltage brackets	A72
Vapour barriers	A74
5 Square™ boxes	A75
NuTek nonmetallic boxes	A79
NuTek Extension rings / vapour barriers	A82
Carlton curved lid	A83

Major types of electrical boxes

Technical specifications

There are 10 major types of electrical boxes used in Canada. All these types of boxes serve specific purposes and are offered with various features / characteristics.

Type	Purpose	Features / Characteristics
Device boxes	Flush installation of a device (switch, receptacle, thermostat, ...)	From 1½ in. deep up to 3 in. deep Available options: cable clamps, brackets, gangable For new or old work
Octagonal boxes	Wire connections (junction box) Light fixture installation Temporary device installation	3 depths available: 1½ in., 1¾ in., 2⅛ in. Available options: cable clamps, brackets, extensions
4 in. Square boxes	Wire connections (junction box) Flush or surface device installation (special cover required)	2 depths available: 1½ in., 2⅛ in. Available options: brackets and extensions
4 ¹¹ / ₁₆ in. Square boxes	Range / Dryer receptacle installation Wire connections (junction box) Flush device installation (special cover required)	2 depths available: 1½ in., 2⅛ in. Available options: brackets and extensions
Utility boxes	Surface installation of a device (special cover required)	2 major models available: BC-1110, BC-2020 Available options: brackets and extensions
347 V Boxes	Installation of 347 V switches for commercial / industrial lighting	Device mounting holes are ¼ in. further apart Models available for flush or surface installation
Concrete rings	Wire connections in concrete slabs	1½ in. deep to 6 in. deep
Masonry boxes	Device installation in masonry (concrete, bricks, ...) construction	2½ in. deep and 3½ in. deep From 1 to 6 gang
Pre-ganged boxes	Sturdy boxes for multiple device installation (special covers required)	2 in. deep From 2 to 6 gang
Power / Communication boxes	Installation of communication devices (cable TV, telephone, ...) side by side with power devices	Communication devices concealed within a box or not 2 gang covers required

How to select the right box

Technical specifications

The selection of the proper box for a given job, is a function of 2 major factors: the application and the type of construction.

Type of Construction	Device Installation	Application
		Wire Connection
Flush installation	Device boxes and wall plates	Octagonal boxes and blank covers
	Square boxes and raised covers	Square boxes and blank covers
	Pre-ganged boxes and covers	
Surface installation	Utility boxes and covers	Octagonal boxes and blank covers
	Square boxes and surface covers	Square boxes and blank covers
New construction	Device boxes and wall plates	Octagonal boxes and blank covers
	Utility boxes and covers	Square boxes and blank covers
	Square boxes and covers	
Old work	Rework device boxes (special brackets)	Octagonal rework boxes (special brackets)
	Device boxes plus 820-D ("F" clips)	Octagonal extensions and blank covers
	Switch box extension	Square extensions and blank covers
	Square extension and cover	
	Utility boxes and covers	
Drywall / Wood stud	Device boxes and wall plates	Octagonal boxes and blank covers
	Square boxes and raised covers	Square boxes and blank covers
Drywall / Metal stud	Steel stud device boxes and wall plates	Steel stud octagonal boxes and blank covers
	Steel stud square boxes and raised covers	Steel stud square boxes and blank covers
Masonry / Concrete	Masonry boxes and wall plates	Concrete rings and covers
	Pre-ganged boxes and covers	
Nonmetallic sheathed cable	Device boxes with "LOOMEX" cable clamps	Octagonal boxes with "LOOMEX" cable clamps and blank covers
	Device boxes with KOs and "LOOMEX" connectors	Octagonal / Square boxes with KOs and "LOOMEX" connectors
Armoured cable	Device boxes with "BX" cable clamps	Octagonal boxes with "BX" cable clamps and blank covers
	Device boxes with KOs and "BX" connectors	Octagonal / Square boxes with KOs and "BX" connectors
Conduit / E.M.T.	Device boxes with conduit KOs and E.M.T. connectors or rigid conduit and locknuts	Octagonal / Square boxes with conduit KOs and E.M.T. connectors or rigid conduit and locknuts

The selection is also guided by the physical dimensions of the box and, to a certain extent, by some personal preferences.

Physical dimensions:

In a flush installation, the depth of the box is limited by the wall thickness. The cubic capacity of the box is also a major factor to consider.

According to the C.E.C., only a limited number of conductors are allowed inside a box of a given cubic capacity (see maximum wire fill chart on page A15).

Personal preferences:

Device boxes are available either gangable or non-gangable. Gangable means that two or more boxes can be joined together, on the job site, to create a multi-gang box as required. Most boxes are also available with or without brackets.

Boxes with brackets are usually installed with screws running through the bracket mounting holes. There are numerous types of brackets either to satisfy a specific need (steel stud bracket or rework bracket) or simply because of personal preferences.

Boxes without brackets are usually nailed from the outside of the box or screwed in place from the inside.

Catalogue number designation

Technical specifications

Most boxes have a 2 part catalogue number: a prefix...

The prefix identifies the Series' number, which indicates the type of box, its physical dimensions, as well as the properties of each series.

i.e.: **BC1104** is the prefix which identifies a:

- Device / Box gangable – 2½ in. deep (12.5 cu. in.)

Series #: BC or CI as applicable	Cu. in.	Description
425	10	Gangable rework device box – 2 in. deep
525	12.5	Gangable rework device box – 2 ½ in. deep
775	10	Gangable device box – 2 ¼ in. deep
777	11	Non-gangable rework device box – 2 ¼ in. deep
1004	15	Gangable device box – 3 in. deep
1018	18	Gangable device box – 3 in. deep
1100	8	Gangable device box – 1 ½ in. deep
1102	10	Gangable device box – 2 in. deep
1104	12.5	Gangable device box – 2 ½ in. deep
1110	16.5	Utility box – 1 7/8 in. deep
1141	13	Utility box – 1 ½ in. deep
1151	18.5	Utility box – 2 1/8 in. deep
1199	18.5	Utility box – 2 1/8 in. deep
1204	16 / gang	347 V Gangable device box – 2 ½ in. deep
1304	14.5	Gangable device box – 2 ½ in. deep
1504	15	Non-gangable device box – 2 ½ in. deep
1804	18	Gangable device box – 2 ½ in. deep
2004	18.5	Non-gangable device box – 2 ¾ in. deep
2016	18.5	Non-gangable device box – 2 ½ in. deep
2018	13	Utility box – 1 ½ in. deep
2020	14	Utility box – 1 7/8 in. deep
2104	12.5 / gang	Non-gangable device box – 2 ½ in. deep
2304	14.5	Non-gangable device box – 2 ½ in. deep
3004	18	Gangable device box – 3 in. deep
3102	12	Gangable device box – 2 in. deep
3104	16	Gangable device box – 2 ½ in. deep
4104	12.5	Power / Communication box – 2 ½ in. deep
4204	12.5 / gang	Power / Communication box – 2 ½ in. deep
4304	12.5	Power / Communication box – 2 ½ in. deep

Catalogue number designation

Technical specifications

Series #: BC or CI as applicable	Cu. in.	Description
52151	21	4 in. square box – 1½ in. deep
52171	30	4 in. square box – 2⅜ in. deep
53151	21	4 in. square extension – 1½ in. deep
53171	30	4 in. square extension – 2⅜ in. deep
54151	15	4 in. octagonal box – 1½ in. deep
54171	21	4 in. octagonal box – 2⅜ in. deep
54591	72	Concrete rings – 1½ in. to 6 in. deep
55151	15	4 in. octagonal extension – 1½ in. deep
55171	21	4 in. octagonal extension – 2⅜ in. deep
56111	5	4 in. ceiling pan – ½ in. deep
72151	30	4-11/16 in. square box – 1½ in. deep
72171	42	4-11/16 in. square box – 2⅜ in. deep
73151	30	4-11/16 in. square extension – 1½ in. deep
73171	42	4-11/16 in. square extension – 2⅜ in. deep
CWB	16	Concrete wall box
mbd	21 / gang	Masonry box – 3½ in. deep
mbd-HV	22.25 / gang	347 V Masonry box – 3⅜ in. deep
mbs	14 / gang	Masonry box – 2½ in. deep
mbs-HV	20.25 / gang	347 V Masonry box – 2⅜ in. deep
OBex	5	4 in. round extension – ½ in. deep
WBF	–	Low voltage mounting bracket

Catalogue number designation

Technical specifications

... and a suffix

The suffix identifies the various features available for each series of boxes (in most cases, the suffix is strictly alphabetical).

i.e.: L is the suffix which identifies a box having: Cable clamps for nonmetallic sheathed cable.

Catalogue	
B	Bracket (nailing style with prongs)
ER	Concrete ring extension
HV	High voltage
K	Concentric knockouts (½ in. and ¾ in.)
KSB	Concentric knockouts (½ in. and ¾ in.) and side bracket
KSS1X-1	Concentric knockouts (½ in. and ¾ in.), mounting strap for steel stud installations and integral additional support bracket. Recessed 1in., 1 gang.
KSSX	Concentric knockouts (½ in. and ¾ in.), mounting strap for steel stud installations and integral additional support bracket
KSSX-1	Concentric knockouts (½ in. and ¾ in.), mounting strap for steel stud installations and integral additional support bracket. Recessed 1in.
L	Clamps for nonmetallic sheathed cable
LA	Clamps for nonmetallic sheathed cable or armoured cable
LA-HV	Clamps for nonmetallic sheathed cable or armoured cable. High voltage.
LB	Clamps for nonmetallic sheathed cable and bracket (nailing style with prongs)
LBA	Clamps for armoured cable or nonmetallic sheathed cable and bracket (nailing style with prongs)
LD	Clamps for nonmetallic sheathed cable and "Swing-Arms" mounting device
LE	Less mounting ears
LF	Clamps for nonmetallic sheathed cable. Direct fan to box mounting.
LH	Clamps for armoured cable or nonmetallic sheathed cable. Extended sides for external nailing.
LHA	Clamps for armoured cable or nonmetallic sheathed cable. Extended sides for external nailing.
LHT	Clamps for nonmetallic sheathed cable or armoured cable. Extended sides for external nailing. Positioning tabs and 2 embossed mounting slots for internal screw installation.
LHTQ	Clamps for nonmetallic sheathed cable or armoured cable. Extended sides for external nailing. Positioning tabs and 2 embossed mounting slots for internal screw installation. Special 1 screw quick mount feature.
LHTQ-2	Clamps for nonmetallic sheathed cable or armoured cable. Extended sides for external nailing. Positioning tabs and 2 embossed mounting slots for internal screw installation. Special 1 screw quick mount feature. 2 gangs.
LHTQ-3	Clamps for nonmetallic sheathed cable or armoured cable. Extended sides for external nailing. Positioning tabs and 2 embossed mounting slots for internal screw installation. 3 gangs.
LHTQ-4	Clamps for nonmetallic sheathed cable or armoured cable. Extended sides for external nailing. Positioning tabs and 2 embossed mounting slots for internal screw installation. 4 gangs.
LLE	Clamps for nonmetallic sheathed cable or armoured cable. Less mounting ears.
LLE-2	Clamps for nonmetallic sheathed cable or armoured cable. Less mounting ears. 2 gangs.
LLE-3	Clamps for nonmetallic sheathed cable or armoured cable. Less mounting ears. 3 gangs.
LLE-4	Clamps for nonmetallic sheathed cable or armoured cable. Less mounting ears. 4 gangs.
LLEA	Clamps for armoured cable or nonmetallic sheathed cable. Less mounting ears.
LLEA-2	Clamps for armoured cable or nonmetallic sheathed cable. Less mounting ears. 2 gangs.
LMS	Clamps for nonmetallic sheathed cable or armoured cable and mounting strap.

Catalogue number designation

Technical specifications

Catalogic	
LMSA	Clamps for armoured cable or nonmetallic sheathed cable and mounting strap
LN	Clamps for nonmetallic sheathed cable or armoured cable. Staked nails
LRB	Clamps for nonmetallic sheathed cable or armoured cable and pivoting ends for "rework" installation
LRE	Clamps for nonmetallic sheathed cable or armoured cable. Recessed ears
LRW	Clamps for nonmetallic sheathed cable or armoured cable and spring mounting device for installation in finished walls
LSBA	Clamps for armoured cable or nonmetallic sheathed cable and side bracket
LSSA1X-1	Clamps for armoured cable or nonmetallic sheathed cable, mounting strap for steel stud installations and integral additional support bracket. Recessed 1 in.
LSSA-2X	Clamps for armoured cable or nonmetallic sheathed cable, mounting strap for steel stud installations and integral additional support bracket. 2 gangs.
LSSA-3X	Clamps for armoured cable or nonmetallic sheathed cable, mounting strap for steel stud installations and integral additional support bracket. 3 gangs.
LSSAX	Clamps for armoured cable or nonmetallic sheathed cable, mounting strap for steel stud installations and integral additional support bracket.
LSSAX-HV	Clamps for armoured cable or nonmetallic sheathed cable, mounting strap for steel stud installations and integral additional support bracket. High voltage.
LSSAX-1	Clamps for armoured cable or nonmetallic sheathed cable, mounting strap for steel stud installations and integral additional support bracket. Recessed 1 in.
LSSX	Clamps for nonmetallic sheathed cable or armoured cable, mounting strap for steel stud installations and integral additional support bracket.
LSS2X	Clamps for nonmetallic sheathed cable or armoured cable, mounting strap for steel stud installations and integral additional support bracket. 2 gangs.
LSS3X	Clamps for nonmetallic sheathed cable or armoured cable, mounting strap for steel stud installations and integral additional support bracket. 3 gangs.
LSSX-1	Clamps for nonmetallic sheathed cable or armoured cable, mounting strap for steel stud installations and integral additional support bracket. Recessed 1 in.
LSS1X-1	Clamps for nonmetallic sheathed cable or armoured cable, mounting strap for steel stud installations and integral additional support bracket. Recessed 1 in. 1 gang box.
LSS2X-1	Clamps for nonmetallic sheathed cable or armoured cable, mounting strap for steel stud installations and integral additional support bracket. Recessed 1 in. 2 gang box.
LSS3X-1	Clamps for nonmetallic sheathed cable or armoured cable, mounting strap for steel stud installations and integral additional support bracket. Recessed 1 in. 3 gang box.
LX	Self-locking spring clamps for nonmetallic sheathed cable
P	Partition
R	Utility box extension
SB	Side bracket
SSX	Mounting strap for steel stud installations and integral additional support bracket
SSX-HV	Mounting strap for steel stud installations and integral additional support bracket. (Mounting ears spaced for high voltage devices)
SSX-1	Mounting strap (offset for 2 x 1/2 in. drywall thicknesses) for steel stud installations and integral additional support bracket
V	V style bracket
VB	Vapour barrier
1/2	1/2 in. conduit knockouts
1	1 in. conduit knockouts

When joined together, they identify a particular box and nothing else.

Therefore, BC2104-LX represents a non-gangable device box, 2 1/2 in. deep with self-locking clamps for nonmetallic sheathed cable.

Device boxes – available models

Technical specifications

Depth													Gangable	
	1 1/2	2	2	2	2 1/4	2 1/2	2 1/2	2 1/2	2 1/2	2 1/2	2 1/2	2 1/2	3	3
Cu. in.	8.0	10.0	10.0	12.0	10.0	12.5	12.5	14.5	12.5	12.5	16.0	18.0	15.0	18.0
Series # BC/CI	1100	1102	425	3102	775	525	1104	1304	4104	4304	3104	1804	1004	1018
Conduit knockouts														
Basic model		•	•				•							•
B							•							
K							•							
KSSX											•			
KSS1X-1											•			
LE							•							
SB		•					•							
SSX				•							•			
Nonmetallic sheathed cable clamps (Loomex, NMD90)														
L	•	•	•		•	•	•		•					•
LB							•							•
LD					•									
LH	•										•	•	•	
LHT							•							
LHTQ								•			•			•
LLE	•													
LHTQ-2/LLE-2														
LHTQ-3/LLE-3														
LHTQ-4/LLE-4														
LMS							•							
LN														
LRB														
LRE	•													
LRW							•							
LSSX										•	•			
LSS2X														
LSS3X														
LSSX-1														
LSS1X-1														
LSS2X-1														
Armoured cable clamps (BX, AC90)														
LX														
LA							•		•					
LBA							•							
LHA							•				•	•	•	
LLEA														
LLEA-2														
LMSA							•							
LSBA							•							
LSSAX				•						•	•			
LSSA-2X														
LSSA-3X														
LSSAX-1														
LSSA1X-1											•			

Device boxes – available models

Technical specifications

Depth	Non-Gangable						
	3	2 ^{1/4}	2 ^{1/2}	2 ^{1/2}	2 ^{1/2}	2 ^{3/4}	2 ^{1/2}
Cu. in.	18.0	11.0	12.5	14.5	15.0	18.5	25.0
Series # BC/CI	3004	777	2104	2304	1504	2004	4204
Conduit knockouts							
Basic model							
B							
K							
KSSX							•
KSS1X-1							
LE							
SB							
SSX							
Nonmetallic sheathed cable clamps (Loomex, NMD90)							
L							
LB							
LD							
LH	•					•	
LHT							
LHTQ				•			
LLE			•		•		
LHTQ-2/LLE-2			•				
LHTQ-3/LLE-3			•				
LHTQ-4/LLE-4			•				
LMS				•			
LN			•				
LRB		•					
LRE							
LRW							
LSSX	•		•				•
LSS2X			•				
LSS3X			•				
LSSX-1	•						
LSS1X-1			•				
LSS2X-1			•				
Armoured cable clamps (BX, AC90)							
LX			•			•	
LA							
LBA							
LHA						•	
LLEA			•				
LLEA-2			•				
LMSA							
LSBA							
LSSAX			•		•		•
LSSA-2X			•				
LSSA-3X			•				
LSSAX-1	•						•
LSSA1X-1							

Features, brackets, clamps, knockouts

Technical specifications

Iberville steel boxes and covers are manufactured from hot dipped galvanized steel sheet. Hot dipped galvanizing is one of the most effective methods of protecting bare steel from corrosion. This zinc coating is uniformly distributed both inside and outside the box, and not only protects the surface of the steel but also sacrifices itself through galvanic action to prevent corrosion at edges, holes (plain or tapped) and possible scratches. The use of hot dipped galvanized steel sheet ensures full zinc protection for all Iberville steel boxes and covers.

Iberville steel boxes incorporate numerous features which result in boxes rugged enough to stand up against the severest abuse.

Features and benefits

- Pre-set positioning tabs for perfectly aligned installation
- Formed stabilizing embosses, which prevent rocking and will not flatten under the impact of a hammer
- The Wedglock system, which locks sides even tighter together when installed
- Diamond shaped pryouts, for easy removal
- Loomex cable clamps, with supporting legs that maintain elevation for easier cable entry
- Combination “slot / Robertson head” screws, which allow the use of more than one type of screwdriver
- Large pan head ground screws above two wire retainers
- Various types of brackets for different applications

Ears

CI1SCREAR/SCR



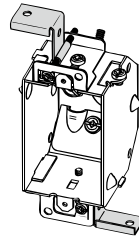
1 screw

CI2SCREAR/SCR

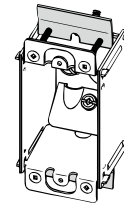


2 screw

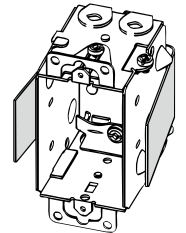
Rework mounting systems*



D



RB



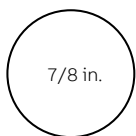
LRW

* C.E.C. 2012 Rule 12-3010 (2)

Where ganged sectional boxes are used, they shall be secured to metal supports or to wooden boards at least 19 mm thick that are rigidly secured to the structural units.

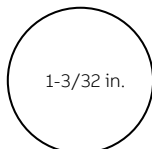
Knockouts / Pryouts

Conduit knockouts



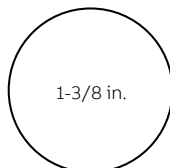
7/8 in.

1/2 in.



1-3/32 in.

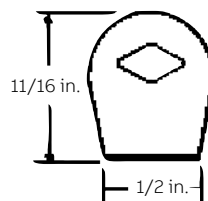
3/4 in.



1-3/8 in.

1 in.

Cable pryouts



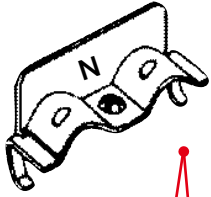
11/16 in.

1/2 in.

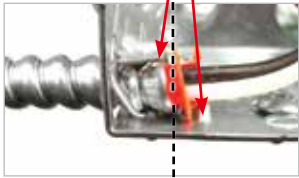


Clamps

Device boxes

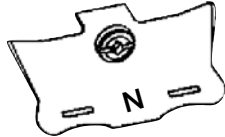


Clamp for nonmetallic sheathed cable "Loomex" and armored cables "BX".



Our dual usage boxes feature retaining flanges built into the bottom of the spacer, that in unison with the cable clamp, hold the anti-short bushing in place and prevent the armour from penetrating into the box.

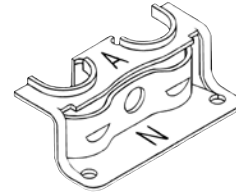
Octagonal boxes



Clamp for non metallic sheathed cable "Loomex".

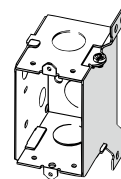
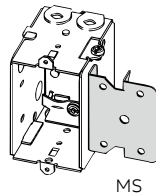
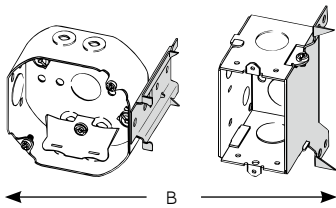


Our "LA" cable clamp:
This clamp has been designed so that the anti-short bushing and the armour butt-up against a retaining wall built into the clamp.

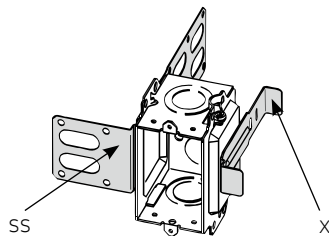
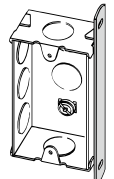


Clamp for armored cable "BX" & non metallic sheathed cable "Loomex".

Brackets



← SB →



Maximum wire fill chart

Technical specifications

The Canadian Electrical Code specifies that the maximum number of conductors to be contained in a box is determined by the following factors:

- The total volume of the box assembly (box, extension, raised cover)
- The size (AWG) of the insulated conductors
- The presence of one or more fixture studs or hickies

- The number of wire connectors in the box
- The presence and thickness of flush devices mounted on a single strap

The table below indicates the maximum number of conductors allowed in a box containing 0 or 1 wire connectors and no fixture stud, hickey or flush device.

Cubic Inch Capacity * (Milliliter)	Box Series No. (BC or CI as applicable), nonmetallic	Maximum Number of Conductors ** (with 0 or 1 wire connectors)			
		14 AWG	12 AWG	10 AWG	8 AWG
5 (81)	56111, OBEX	3	2	2	-
8 (131)	1100	5	4	3	2
10 (163)	425, 775, 1102	6	5	4	3
11 (180)	777	7	6	4	4
12 (197)	3102	8	6	5	4
12.5 (204/gang)	525, 1104, 2104, 4104, 4204, 4304	8	7	5	4
13 (213)	1141, 2018	8	7	5	4
14 (229/gang)	2020, MBS	9	8	6	5
14.5 (237)	1304, 2304	9	8	6	5
15 (245)	1004, 1504, 54151, 55151	10	8	6	5
16 (262/gang)	1004-LB, 1204, 3104	10	9	7	5
16.5 (270)	1110, 1110-HV	11	9	7	6
18 (295)	1018, 1804, 3004, 54521, WSW, WSW-BX, WSW-N, WSW-FC, F-WSW, FWSWBX, WSW-US, F-WSW-US	12	10	8	6
18.5 (303)	1151, 1199, 2004	12	10	8	6
20.25 (331/gang)	MBS-HV	13	11	9	7
21 (344/gang)	52151, 53151, 54171, MBD	14	12	9	7
22.25 (364/gang)	MBD-HV	14	12	9	8
24 (393)	54531	16	13	10	8
25 (410)	2104 (2 gangs)	16	14	11	9
27 (442)	2304 (2 gangs), WOCT, WOCT-FC, FWOCT, WOCT-US, F-WOCT-US	18	15	12	9
30 (491)	52171, 53171, 72151, 73151	20	17	13	10
33 (540)	2-WSW, 2-FWSW, 2WSW-US, 2-FWSW-US	22	18	14	12
36 (590)	54551	24	20	16	13
37.5 (614)	2104 (3 gangs)	25	21	16	13
39.5 (647)	2304 (3 gangs)	26	21	17	17
42 (688)	54561, 72171, 73171	28	24	18	15
50 (819)	2104 (4 gangs), 3-WSW, 3-FWSW	33	28	22	18
52 (853)	2304 (4 gangs), WRD, FWRD, 4-FWSW, 4-WSW	34	29	23	18

* When a single strap device is more than 1 in. thick, reduce box capacity by:
5 cu. in. x thickness of device.

** The maximum number of conductors shown in the table must be reduced in each of the following cases:

- One conductor, if the box contains one or more fixture studs or hickies
- One conductor for every additional pair of wire connectors (1 conductor for 2 or 3 wire connectors, 2 conductors for 4 or 5 wire connectors...)
- Two conductors for each single strap flush device up to 1 in. thick
- 1 cu. in. = 16.4 milliliter = 16.4 cubic centimeter
- 1 cubic centimeter = 1 milliliter = 0.061 cu. in.

Space for conductors in boxes

Size of Conductors AWG)	(cu. in.)	(cu. cm.)
14	1.50	24.6
12	1.75	28.7
10	2.25	36.9
8	2.75	45.1
6	4.50	73.7

Device Boxes

Armoured and nonmetallic sheathed cable clamps

Iberville LHTQ™ Family

Presenting the LHTQ family of Iberville boxes. With their additional cubic capacity, this family of boxes is designed for any installations that require a greater number of conductors such as heating, GFCI and arc-fault applications.

What's more, because it's an LHTQ, installation is always fast and accurate. Look for these practical and time saving features on all LHTQ models.

Features and benefits

- Positioning guides for drywall and outside wall applications
- Retractable positioning tabs
- Internally embossed mounting slots
- Flat box sides for maximum stability
- Holding prongs
- Single and 2 gang boxes are CSA approved for one-screw mounting



Device boxes

Armoured and nonmetallic sheathed cable clamps



01



02



03



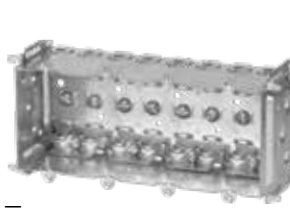
04



05



06



07



08

01 BC1018-LHTQ

Internally embossed slots for screw mounting. Fixed positioning tabs for single $\frac{1}{2}$ in. drywall along with retractable positioning tabs for double $\frac{1}{2}$ in. drywall applications. Fixed positioning tabs for outside wall applications. Holding prongs. One screw mounting.

02 BC1304-LHTQ

Internally embossed slots for screw mounting. Fixed positioning tabs for single $\frac{1}{2}$ in. drywall along with retractable positioning tabs for double $\frac{1}{2}$ in. drywall applications. Fixed positioning tabs for outside wall applications. Holding prongs. One screw mounting.

03 BC2004-LHTQ

Internally embossed slots for screw mounting. Fixed positioning tabs for single $\frac{1}{2}$ in. drywall along with retractable positioning tabs for double $\frac{1}{2}$ in. drywall applications. Fixed positioning tabs for outside wall applications. Holding prongs. One screw mounting.

04 BC2304-LHTQ

Internally embossed slots for screw mounting. Fixed positioning tabs for single $\frac{1}{2}$ in. drywall along with retractable positioning tabs for double $\frac{1}{2}$ in. drywall applications. Fixed positioning tabs for outside wall applications. Holding prongs. One screw mounting.

05 BC2304-LHTQ-2

Internally embossed slots for screw mounting. Fixed positioning tabs for single $\frac{1}{2}$ in. drywall along with retractable positioning tabs for double $\frac{1}{2}$ in. drywall applications. Fixed positioning tabs for outside wall applications. Holding prongs. One screw mounting.

06 BC2304-LHTQ-3

Internally embossed slots for screw mounting. Fixed positioning tabs for single $\frac{1}{2}$ in. drywall along with retractable positioning tabs for double $\frac{1}{2}$ in. drywall applications. Fixed positioning tabs for outside wall applications. Holding prongs.

07 BC2304-LHTQ-4

Internally embossed slots for screw mounting. Fixed positioning tabs for single $\frac{1}{2}$ in. drywall along with retractable positioning tabs for double $\frac{1}{2}$ in. drywall applications. Fixed positioning tabs for outside wall applications. Holding prongs.

08 BC3104-LHTQ

Internally embossed slots for screw mounting. Fixed positioning tabs for single $\frac{1}{2}$ in. drywall along with retractable positioning tabs for double $\frac{1}{2}$ in. drywall applications. Fixed positioning tabs for outside wall applications. Holding prongs.

Cat. No.	Dimensions H x W x D (in.)	Volume (Cu. in.)	Gangable Yes or No	Features			Pryouts ends
				One screw mounting	Pos. tabs	Prov. for external nailing	
BC1018-LHTQ	3 x 2 x 3	18.0	yes	yes	yes	yes	4
BC1304-LHTQ	3 x 2 x 2 $\frac{1}{2}$	14.5	yes	yes	yes	yes	4
BC1304-LHATQ	3 x 2 x 2 $\frac{1}{2}$	14.5	yes	yes	yes	yes	4
BC2004-LHTQ	3 $\frac{3}{4}$ x 2 $\frac{3}{16}$ x 2 $\frac{3}{4}$	20.5	no	yes	yes	yes	4
BC2304-LHTQ	3 x 2 x 2 $\frac{1}{2}$	14.5	no	yes	yes	yes	4
BC2304-LHTQ-2	3 x 3 $\frac{3}{4}$ x 2 $\frac{1}{2}$	27.0	no	yes	yes	yes	8
BC2304-LHTQ-3	3 x 5 $\frac{1}{2}$ x 2 $\frac{1}{2}$	39.5	no	no	yes	yes	12
BC2304-LHTQ-4	3 x 7 $\frac{3}{8}$ x 2 $\frac{1}{2}$	52.0	no	no	yes	yes	16
BC3104-LHTQ	3 x 2 x 2 $\frac{1}{2}$	16.0	yes	yes	yes	yes	4

Device boxes

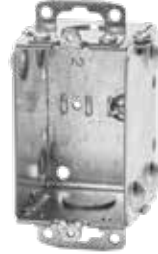
Conduit knockouts

—
01 CI425
 “Screwlok” brackets
 for rework installation.
 Max. wall thickness:
 $\frac{5}{8}$ in.



—
01

—
02 BC1102
 Recessed ears



—
02

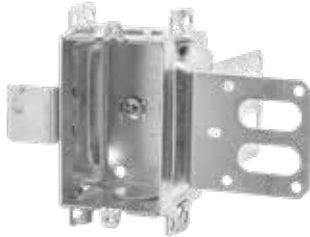
—
03 CI1102-SB

—
04 CI3102-SSX
 “Wraparound” bracket
 for $1\frac{5}{8}$ in. steel studs.
 With integral
 support bracket.



—
03

—
05 BC1104
 Recessed ears



—
04



—
05

—
06 CI1104-B



—
06



Cat. No.	Volume (Cu. in.)	Features		Knockouts	
		Ears	Bracket	$\frac{1}{2}$ in. ends	$\frac{1}{2}$ in. bottom
2 in. deep – gangable – 3 in. x 2 in					
CI425	10.0	flush	rework	2	–
BC1102	10.0	recessed	–	2	–
CI1102-SB	10.0	–	“SB”	2	–
CI3102-SSX	12.0	–	“SSX”	2	–
2 1/2 in. deep – gangable – 3 in. x 2 in					
BC1104	12.5	recessed	–	2	2
CI1104-B	12.5	–	“B”	2	2

Device boxes

Conduit knockouts

01 **CI1104-K**
Concentric knockouts.
Recessed ears.

02 **BC1104-LE**
Less ears

03 **CI1104-SB**

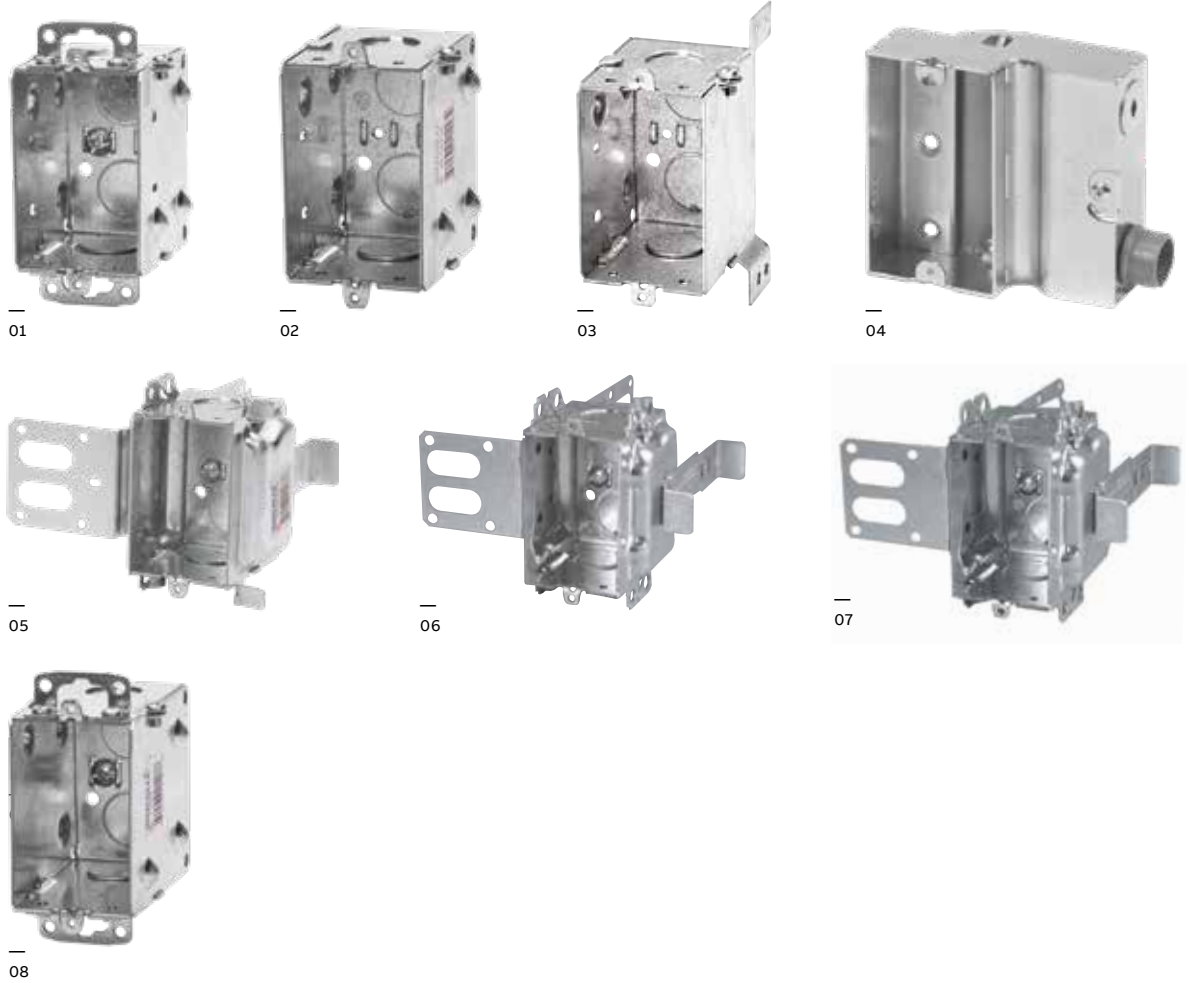
04 **BCR2000**

05 **CI3104-KSSX**
Concentric knockouts.
"Wraparound" bracket
for 2 1/2 in. and 3 5/8 in.
steel studs. With integral
support bracket.

06 **BC3104-KSS1X-1**
Concentric knockouts.
"Wraparound" bracket
for 2 1/2 in. and 3 5/8 in.
steel studs. With integral
support bracket.
Brackets positioned for
2 layers of 1/2 in. Drywall.

07 **CI3104-SSX**
"Wraparound" bracket
for 2 1/2 in. and 3 5/8 in.
steel studs. With integral
support bracket.

08 **CI1004**
Recessed ears



Cat. No.	Volume (Cu. in.)	Ears	Features		Knockouts		
			Bracket	1/2 in. ends	1/2 in. bottom	3/4 in. ends	
2 1/2 in. deep – gangable – 3 in. x 2 in.							
CI1104-K	12.5	recessed	-	2	2	2	
BC1104-LE	12.5	-	-	2	2	-	
CI1104-SB	12.5	-	"SB"	2	2	-	
CI3104-KSSX	16.0	-	"SSX"	2	2	2	
BC3104-KSS1X-1	16.0	-	"SSX"	2	2	2	
CI3104-SSX	16.0	-	"SSX"	2	2	-	
3 in. deep – gangable – 3 in. x 2 in.							
CI1004	15.0	recessed	-	2	2	-	
CI3004-KSSX-1.25	18.0	-	"SSX"	-	1	2	

Cat. No.	Volume (Cu. in.)	Usage	Ground Screw	Knockout
2 in. deep – non-gangable – 3 3/4 in. x 4 in. x 2 in.				
BCR2000*	18.0	KO	2	2

* Supplied c/w one CI4004 connector

Device boxes

Nonmetallic sheathed and armoured cable clamps

- 01 **BC1100-L**
Flush ears.
- 02 **BC1100-LLE**
Less ears
- 03 **CI1100-LRE**
Recessed ears
- 04 **CI425-L**
"Screwlok" brackets for
rework installation.
Max. wall thickness: 5/8 in.
- 05 **BC1102-L**
Flush ears.
- 06 **BC1102-LH**
Provision for
external nailing.



01



02



03



04



05



06



Cat. No.	Volume (Cu. in.)	Features		
		Ears	Bracket	Pryouts ends
1 1/2 in. deep – gangable – 3 in. x 2 in.				
BC1100-L	8.0	flush	–	4
BC1100-LLE	8.0	–	–	4
CI1100-LRE	8.0	recessed	–	4
2 in. deep – gangable – 3 in. x 2 in.				
CI425-L	10.0	flush	rework	4
BC1102-L	10.0	flush	–	4
BC1102-LH	10.0	–	–	4

Device boxes

Nonmetallic sheathed and armoured cable clamps



01



02



03



04



05



06



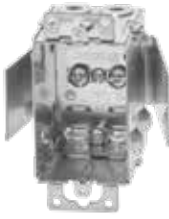
07



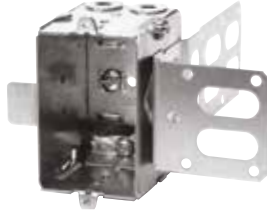
08



09



10



11



12

01 **CI775-L**
Flush ears.

02 **BC775-LD**
"Swing-arm" rework brackets. Max. wall thickness: 3/4 in.

03 **BC777-LRB**
Pivoting ends for rework installation. Max. wall thickness: 1 1/8 in. * Non-Gangable

04 **CI525-L**
"Screwlok" brackets for rework installation. Max. wall thickness: 5/8 in.

05 **BC1104-LB**

06 **BC1104-LHT**
Positioning tabs. Provision for external nailing. Two embossed mounting slots for internal screw installation.

07 **CI1104-LMS**
Mounting strap with prongs. Recessed 1/2 in.

08 **BC1104-L**
Flush ears.

09 **BC1104-LRB**
Flat sides for rework applications.

10 **BC1104-LRW**
Rework bracket for closed wall applications. Max. wall thickness: 1 in.

11 **BC1104-LSSX**

12 **BC1304-LHTQ**
One screw mounting. Provision for external nailing. Positioning tabs for 1/2 in. and 3/4 in. drywall.



Cat. No.	Volume (Cu. in.)	Ears	Features	ends	Pryouts Knockouts 1/2 in. bottom
			Bracket		
2 1/4 in. deep – gangable – 3 in. x 2 in. – for use with nonmetallic sheathed cable only					
CI775-L	10.0	flush	-	4	1
BC775-LD	10.0	flush	rework	4	1
BC777-LRB*	11.0	-	rework	4	1
2 1/2 in. deep – gangable – 3 in. x 2 in.					
CI525-L	12.5	flush	rework	4	-
BC1104-L	12.5	flush	-	4	-
BC1104-LB	12.5	-	"B"	4	-
BC1104-LHT	12.5	-	P. Tabs	4	-
CI1104-LMS	12.5	-	"MS"	4	-
BC1104-LRB	12.5	flush	-	4	-
BC1104-LRW	12.5	flush	rework	4	-
BC1104-LSSX	12.5	-	"SSX"	4	-
BC1304-LHTQ	14.5	-	P. Tabs	4	-

* Non-Gangable

Device boxes

Nonmetallic sheathed and armoured cable clamps



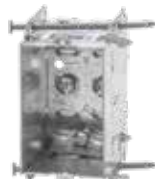
01



02



03



04



05



06



07



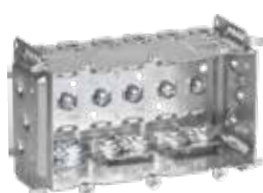
08



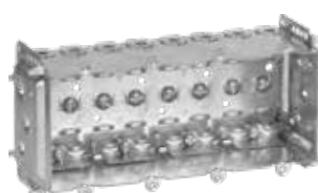
09



10



11



12

01 **BC2104-LLE**
Holding prongs and prepositioned depth tabs.

02 **BC2304-LHTQ**
One screw mounting. Provision for external nailing. Positioning tabs for 1/2 in. and 3/4 in. drywall.

03 **BC2104-LX**
Self-locking spring clamps. Holding prongs and prepositioned depth tabs. Raised ground screws. **Approved for nonmetallic sheathed cable only.**

04 **BC2104-LN**
Staked nails. Holding prongs and prepositioned depth tabs.

05 **BC2104-LRB**
Flat sides for rework applications. 1 gang.

06 **BC2104-LLE-2**
2 gang. Holding prongs and prepositioned depth tabs.

07 **BC2104-LRB-2**
Flat sides for rework applications. 2 gang.

08 **BC2104-LLE-3**
3 gang. Holding prongs and prepositioned depth tabs.

09 **BC2104-LLE-4**
4 gang. Holding prongs and prepositioned depth tabs.

10 **BC2304-LHTQ-2**
2 gang. Holding prongs and prepositioned depth tabs.

11 **BC2304-LHTQ-3**
3 gang. Holding prongs and prepositioned depth tabs.

12 **BC2304-LHTQ-4**
4 gang. Holding prongs and prepositioned depth tabs.



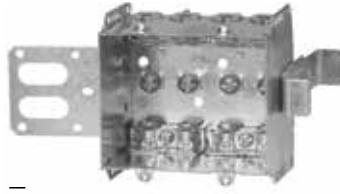
Cat. No.	Width (in.)	Volume (Cu. in.)	Ears	Features	
				Bracket	Pryouts ends
2 1/2 in. deep – non-gangable – 3 in. high					
BC2104-LLE	2	12.5	–	P. Tabs	4
BC2104-LLE-2	3 3/4	25.0	–	P. Tabs	8
BC2104-LLE-3	5-1/2	37.5	–	P. Tabs	12
BC2104-LLE-4	7-3/8	50.0	–	P. Tabs	16
BC2104-LN	2	12.5	–	P. Tabs/Nails	4
BC2104-LX	2	12.5	–	P. Tabs	4
BC2304-LHTQ	2	14.5	–	P. Tabs	4
BC2304-LHTQ-2	3 3/4	27.0	–	P. Tabs	8
BC2304-LHTQ-3	5-1/2	39.5	–	P. Tabs	12
BC2304-LHTQ-4	7-3/8	52.0	–	P. Tabs	16
BC2104-LRB	2	12.5	–	–	4
BC2104-LRB-2	3 3/4	25.0	–	–	8

Device boxes

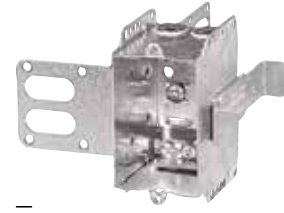
Nonmetallic sheathed and armoured cable clamps



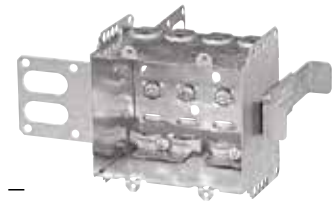
01



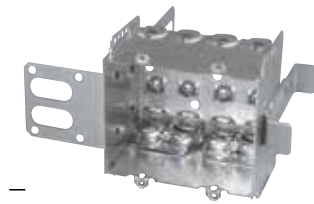
02



03



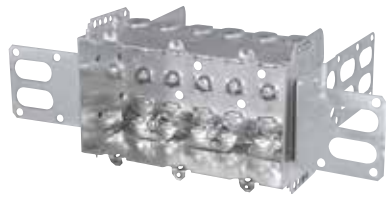
04



05



06



07



08

01 **CI2104-LSSA1X-1**
"Wraparound" bracket for 2 1/2 in. and 3 5/8 in. steel studs. With integral support bracket. **Brackets positioned for 2 layers of 1/2 in. drywall.**

02 **CI2104-LSSA2X-1**
"Wraparound" bracket for 2 1/2 in. and 3 5/8 in. steel studs. With integral support bracket. **Brackets positioned for 2 layers of 1/2 in. drywall.**

03 **CI2104-LSSX**
"Wraparound" bracket for 2 1/2 in. and 3 5/8 in. steel studs. With integral support bracket.

04 **CI2104-LSS2X-1**
"Wraparound" bracket for 2 1/2 in. and 3 5/8 in. steel studs. With integral support bracket. **Brackets positioned for 2 layers of 1/2 in. drywall.**

05 **CI-2104-LSS-2X**
"Wraparound" bracket for 2 1/2 in. and 3 5/8 in. steel studs. With integral support bracket.

06 **CI2104-LSS3X-1**
"Wraparound" bracket for 2 1/2 in. and 3 5/8 in. steel studs. With integral support bracket. **Brackets positioned for 2 layers of 1/2 in. drywall.**

07 **CI-2104-LSS-3X**
"Wraparound" bracket for 2 1/2 in. and 3 5/8 in. steel studs. With integral support bracket.

08 **BC1504-LLE**
Holding prongs and prepositioned depth tabs on one side.



Cat. No.	Width (in.)	Volume (Cu. in.)	Features		
			Ears	Bracket	Pryouts ends
2 1/2 in. deep – non-gangable – 3 in. high					
CI2104-LSSA1X-1	2	12.5	–	"SSX"	4
CI2104-LSSA2X-1	3 3/4	25.0	–	"SSX"	8
CI2104-LSSX	2	12.5	–	"SSX"	4
CI2104-LSS2X-1	3 3/4	25.0	–	"SSX"	8
CI-2104-LSS-2X	3 3/4	25.0	–	"SSX"	8
CI2104-LSS3X-1	5 1/2	37.5	–	"SSX"	12
CI-2104-LSS-3X	5 1/2	37.5	–	"SSX"	12
CI2104-LSS-4X	7 3/8	50.0	–	"SSX"	16
2 1/2 in. deep – non-gangable – 3 in. high					
BC1504-LLE	2 1/4	15.0	–	P. Tabs	4

Device boxes

Nonmetallic sheathed and armoured cable clamps



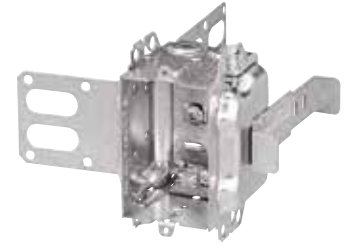
01



02



03



04



05



06



07



08

01 **BC3104-LH**
Positioning tabs. Provision for external nailing.

02 **BC3104-LHTQ**
One screw mounting. Provision for external nailing. Positioning tabs for 1/2 in. and 3/4 in. drywall.

03 **BC3104-LSSX**
"Wraparound" bracket for 2 1/2 in. and 3 5/8 in. steel studs. With integral support bracket.

04 **CI3104-LSS1X-1**
"Wraparound" bracket for 2 1/2 in. and 3 5/8 in. steel studs. With integral support bracket. **Brackets positioned for 2 layers of 1/2 in. drywall.**

05 **BC1304-LHT**
Provision for external nailing.

06 **CI1804-LH**
Positioning tabs. External nailing. Mounting slots for internal screw installation. X-Cube adds 5.5 cu. in.

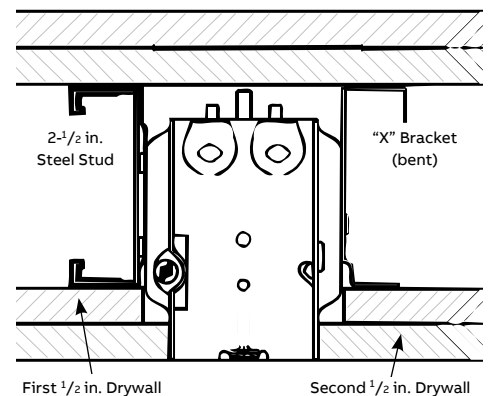
07 **BC2004-LH**
Provision for external nailing. Holding prongs and prepositioned depth tabs on one side.

08 **BC2004-LHTQ**
Internally embossed slots for screw mounting. Fixed positioning tabs for single 1/2 in. drywall along with retractable positioning tabs for double 1/2 in. drywall applications. Fixed positioning tabs for outside wall applications. Holding prongs. One screw mounting.



Cat. No.	Volume (Cu. in.)	Features		
		Ears	Bracket	Pryouts ends
2 1/2 in. deep – gangable – 3 in. x 2 in.				
BC3104-LH	16.0	–	P. Tabs	4
BC1304-LHT	14.5	–	P. Tabs	4
BC3104-LHTQ	16.0	–	P. Tabs	4
BC3104-LSSX	16.0	–	"SSX"	4
CI3104-LSS1X-1	16.0	–	"SSX"	4
CI1804-LH	18.0	–	P. Tabs	4
2 3/4 in. deep – non-gangable – 3 3/4 in. x 2 3/16 in.				
BC2004-LH	18.5	–	P. Tabs	4
BC2004-LHTQ	20.5	–	P. Tabs	4

CI3104-LSS1X-1 Top View



Device boxes

Nonmetallic sheathed and armoured cable clamps

01 **BC1004-L**
Flush ears.



01

02 **BC1004-LH**
Positioning tabs.
Provision for external nailing. Two embossed mounting slots for internal screw installation.



02

03 **CI1004-LB**
Side bracket wood stud.



03

04 **BC1018-LHTQ**
One screw mounting provisions for external nailing.



04

05 **BC3004-LH**
Provision for external nailing.



05

06 **CI3004-LSSX-1**
1 in. recessed brackets for 2 1/2 in. and 3 5/8 in. steel studs. Brackets positioned for 2 layers of 1/2 in. drywall.



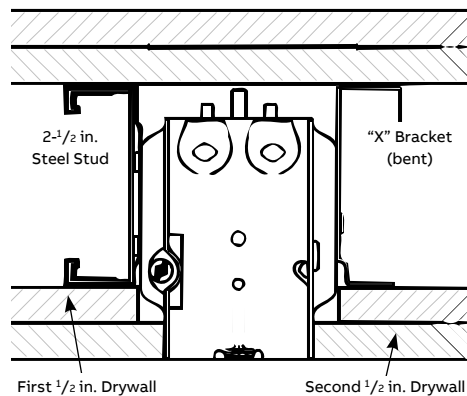
06



Cat. No.	Volume (Cu. in.)	Features		
		Ears	Bracket	Pryouts ends
3 in. deep – gangable – 3 in. x 2 in.				
BC1004-L	15.0	flush	-	4
BC1004-LH	15.0	-	P. Tabs	4
CI1004-LB	16.0	-	"B"	4
BC1018-LHTQ	18.0	-	P. Tabs	4
BC3004-LH	18.0	-	-	4
CI3004-LSSX	18.0	-	"SSX"	4
CI3004-LSSX-1	18.0	-	"SSX"	4
CI3004-LSSAX-1.25*	18.0	-	"SSX"	4

* Brackets positioned for 2 layers of 5/8 in. drywall

CI3004-LSSX-1 Top View



Device boxes

Nonmetallic sheathed and armoured cable clamps

01 **CI3102-LSSAX**
"Wraparound" bracket for 1⁵/₈ in. steel studs. With integral support bracket.

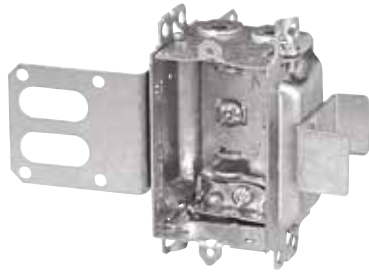
02 **BC1104-LA**
Flush ears.

03 **BC1104-LHA**
Positioning tabs. Provision for external nailing. Two embossed mounting slots for internal screw installation.

04 **CI1104-LMSA**
Mounting strap recessed 1/2 in.

05 **BC1104-LSSAX**

06 **CI3004-LSSAX-1**
1 in. recessed brackets for 2¹/₂ in. and 3⁵/₈ in. steel studs. **Brackets positioned for 2 layers of 1/2 in. drywall.**



01



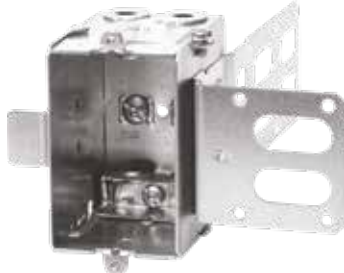
02



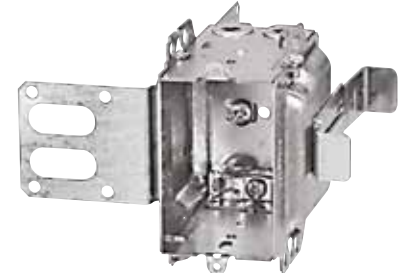
03



04



05



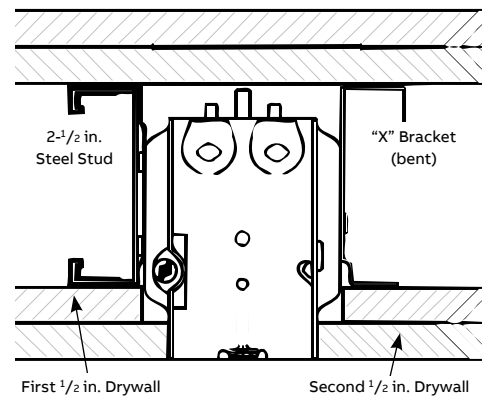
06



Cat. No.	Volume (Cu. in.)	Ears	Features	
			Bracket	Pryouts ends
2 in. deep – gangable – 3 in. x 2 in.				
CI3102-LSSAX	12.0	–	"SSX"	4
2 1/2 in. deep – gangable – 3 in. x 2 in.				
BC1104-LA	12.5	flush	–	4
BC1104-LHA	12.5	–	P. Tabs	4
CI1104-LMSA	12.5	–	"MS"	4
BC1104-LSSAX	12.5	–	"SSX"	4
3 in. deep – gangable – 3 in. x 2 in.				
CI3004-LSSAX-1*	18.0	–	"SSX"	4

* Brackets positioned for 2 layers of 1/2 in. drywall

CI3004-LSSAX-1 Top View



Device boxes

Nonmetallic sheathed and armoured cable clamps

01 CI2104-LSSAX

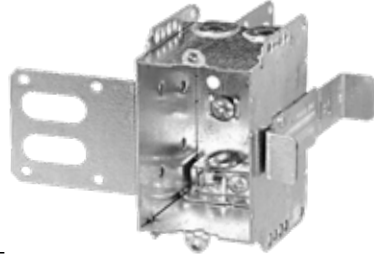
"Wraparound" bracket for 2 1/2 in. and 3 5/8 in. steel studs. With integral support bracket.

02 CI2104-LSSA-2X

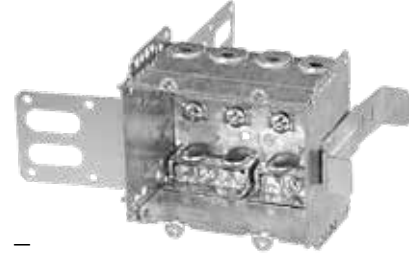
2 gang. "Wraparound" bracket for 2 1/2 in. and 3 5/8 in. steel studs. With integral support bracket.

03 CI2104-LSSA-3X

3 gang. "Wraparound" bracket for 2 1/2 in. and 3 5/8 in. steel studs. With integral support bracket.



—
01



—
02



—
03



Cat. No.	Width (in.)	Volume (Cu. in.)	Features		
			Ears	Bracket	Pryouts ends
2 1/2 in. deep – non-gangable – 3 in. high					
CI2104-LSSAX	2	12.5	–	P. Tabs	4
CI2104-LSSA-2X	3 3/4	25.0	–	"SSX"	8
CI2104-LSSA-3X	5 1/2	37.5	–	"SSX"	12
CI2104-LSSA-4X	7 3/8	50.0	–	"SSX"	16

Device boxes

Nonmetallic sheathed and armoured cable clamps



01 **CI1504-LSSAX**
"Wraparound" bracket for 2 1/2 in. and 3 5/8 in. steel studs. With integral support bracket.

02 **CI3104-LHA**
Positioning tabs. Provision for external nailing.

03 **BC3104-LSSAX**
"Wraparound" bracket for 2 1/2 in. and 3 5/8 in. steel studs. With integral support bracket.

04 **BC3104-LSSAX-5/8**
Brackets for use with 5/8 in. drywall.

05 **CI3104-LSSA1X-1**
1 in. recessed brackets for 2 1/2 in. and 3 5/8 in. steel studs. **Brackets positioned for 2 layers of 1/2 in. drywall.**

06 **BC3104-LSSX**
"Wraparound" bracket for 2 1/2 in. and 3 5/8 in. steel studs. With integral support bracket.

07 **CI2004-LHA**
Provision for external nailing. Holding prongs and prepositioned depth tabs.

08 **CI1004-LHA**
Positioning tabs. Provision for external nailing. Two embossed mounting slots for internal screw installation.



Cat. No.	Volume (Cu. in.)	Ears	Features	
			Bracket	Pryouts ends
2 1/2 in. deep – non-gangable – 3 in. x 2 1/4 in.				
CI1504-LSSAX	15.0	–	"SSX"	4
2 1/2 in. deep – gangable – 3 in. x 2 in.				
CI3104-LHA	16.0	–	P. Tabs	4
BC3104-LSSAX	16.0	–	"SSX"	4
BC3104-LSSAX-5/8	16.0	–	"SSX"	4
CI3104-LSSA1X-1	16.0	–	"SSX"	4
BC3104-LSSX	16.0	–	P. Tabs	4
2 3/4 in. deep – non-gangable – 3 3/4 in. x 2 3/16 in.				
CI2004-LHA	18.5	–	P. Tabs	4
3 in. deep – gangable – 3 in. x 2 in.				
CI1004-LHA	15.0	–	P. Tabs	4

Device boxes

Boxes for ICF construction



BC2104-LMS



BC2104-LMS-2



BC2104-LMS-3



BC2104-LMS-4



BC2104-LMSA



BC2104-LMSA-2



BC2104-LMSA-3



BC2104-LMSA-4



CI3102-LMS



CI3102-LMSA



CI3102-MS



BC52151-KMS



BC54151-LMS



BC54151-LMSA



BC52171-KMS



CI72151-KMS



BC72171-KMS



Cat. No.	Volume (Cu. in.)	Dimensions H x W x D (in.)	Features	Gangable Yes or No
Device boxes				
BC2104-LMS	12.5	3 x 2 x 2 1/2	Loomex/BX	Yes
BC2104-LMS-2	25.0	3 x 3 3/4 x 2 1/2	Loomex/BX	No
BC2104-LMS-3	37.5	3 x 5 1/2 x 2 1/2	Loomex/BX	No
BC2104-LMS-4	50.0	3 x 7 3/8 x 2 1/2	Loomex/BX	No
BC2104-LMSA	12.5	3 x 2 x 2 1/2	BX/Loomex	No
BC2104-LMSA-2	25.0	3 x 3 3/4 x 2 1/2	BX/Loomex	No
BC2104-LMSA-3	37.5	3 x 5 1/2 x 2 1/2	BX/Loomex	No
BC2104-LMSA-4	50.0	3 x 7 3/8 x 2 1/2	BX/Loomex	No
CI3102-LMS	12.0	3 x 2 x 2	BX/Loomex	Yes
CI3102-LMSA	12.0	3 x 2 x 2	BX/Loomex	Yes
CI3102-MS	12.0	3 x 2 x 2	Conduit	Yes



Cat. No.	Volume (Cu. in.)	Dimensions H x W x D (in.)	Features	Gangable Yes or No
Octagonal boxes				
BC54151-LMS	15.0	4 x 4 x 1 1/2	Loomex/BX	No
BC54151-LMSA	15.0	4 x 4 x 1 1/2	Loomex/BX	No



Cat. No.	Volume (Cu. in.)	Dimensions H x W x D (in.)	Knockouts			
			1/2 in. sides	1/2 in. bottom	3/4 in. sides	3/4 in. bottom
Conduit knockouts						
BC52151-KMS	15.0	4 x 4 x 1 1/2	4	2	2	2
BC52171-KMS	30.0	4 x 4 x 2 1/8	4	2	2	2
CI72151-KMS	30.0	4 11/16 x 4 11/16 x 1 1/2	-	2	4	2
BC72171-KMS	42.0	4 11/16 x 4 11/16 x 2 1/8	-	2	4	2

Device boxes

Stainless steel wall plates

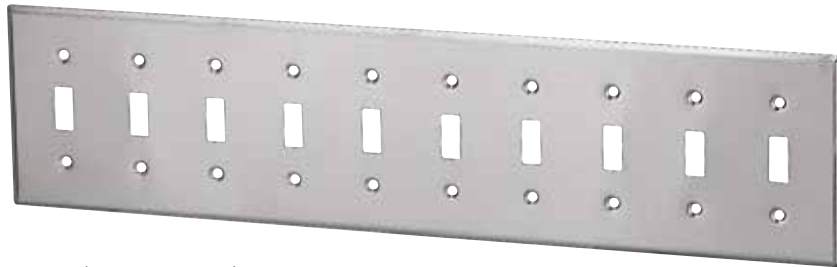
General usage



Toggle switch



C197071



C197080 (1 gang to 10 gangs)

Duplex receptacle



C197101



C197102

Blank box mounting (3.281 in.)



C197011

GFCI / Decora



C197401



C197406 (1 gang to 6 gangs)

Blank device mounting (2.375 in.)



C197121



C197124 (1 gang to 4 gangs)

Combination switch / receptacle



C197532



C197573

Device boxes

Stainless steel wall plates

Specialty usage



Telephone



* CI97181
3/8 in. opening

* CI97191
5/8 in. opening

Emergency



CI6851-RF
ON / OFF

Single receptacle



CI97091
1-13/32 in. diameter

GFCI Conversion kit



BC97002
For 4 in. square boxes

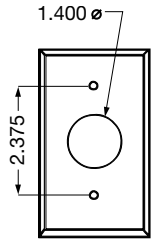
* Not applicable.

Device boxes

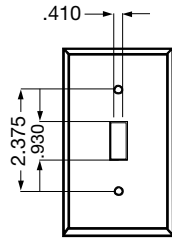
Stainless steel wall plates

Dimensions

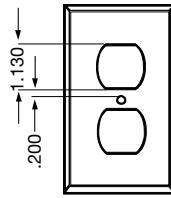
Standard all plate



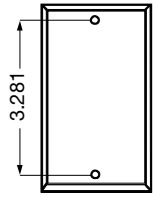
CI97091



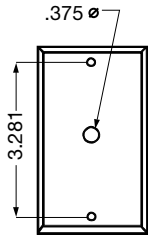
CI97071



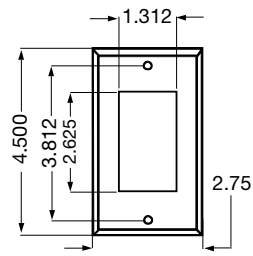
CI97101



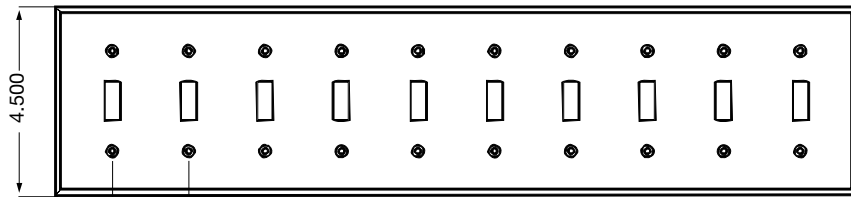
CI97011



CI97181

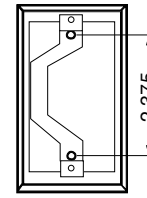


CI97401

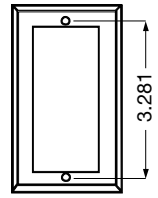


CI97080

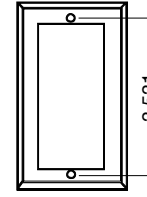
Mounting hole spacings



Device mount



Box mount




HV Box mount

Device boxes

Stainless steel wall plates

Selection guide

Description	1 Gang	2 Gangs	3 Gangs	4 Gangs	5 Gangs	6 Gangs	7 Gangs	8 Gangs	9 Gangs	10 Gangs
Toggle switch	CI97071	CI97072	CI97073	CI97074	CI97075	CI97076		CI97078	CI97079	CI97080
Duplex receptacle	CI97101	CI97102								
Blank boxes										
Mounting 3.281 in.	CI97011	CI97012	CI97013	CI97014						
Blank device										
Mounting 2.375 in.	CI97121	CI97122	CI97123	CI97124						
GFCI / Decora	CI97401	CI97402	CI97403	CI97404	CI97405	CI97406				
GFCI Conversion kit		BC97002								
Combination										
Switch / Receptacle		CI97532			CI97563	CI97573				
15 A Receptacle	CI97091									
Telephone 3/8 in. opening	* CI97181									
Telephone 5/8 in. opening	* CI97191									
Emergency on / off	CI6851-RF									

 * Not applicable.

Technical specifications

Type 430 Stainless steel

- 16% chrome
- Corrosion resistant
- Recommended for industrial, commercial and institutional applications
- Supplied with nickel plated brass screws
- 1 to 3 gangs – Vertically brushed
- 4 gangs and up – Horizontally brushed

4 in. Octagonal boxes

Conduit knockouts

01 **BCOBEX**
Octagonal box extension.

02 **BC56111**
Ceiling pan.

03 **BC54151-K**
Concentric knockouts.

04 **CI54151-KSSX**
Concentric knockouts.
"Wraparound" bracket for
2½ in. and 3⅝ in. steel
studs. With integral
support bracket.

05 **BC55151-K**
Extension ring with
ground screw.
Concentric knockouts.

06 **C54171-K**
Concentric knockouts.

07 **CI54151-KSSX**
Concentric knockouts.
"Wraparound" bracket for
2½ in. and 3⅝ in. steel
studs. With integral
support bracket.

08 **CI54171-KSSX-1**
Mounting strap
(offset for 2 x ½ in.
drywall thicknesses).

09 **CI55171-K**
Extension ring with
ground screw,
concentric knockouts.



01



02



03



04



05



06



07



08



09



Cat. No.	Description
½ in. deep – extensions	
BCOBEX	Extension for octagonal boxes. ½ in. non-adjustable depth. Complete with mounting screws (5 cu. in.)

Cat. No.	Volume (Cu. in.)	Bracket	Features				Knockouts	
			Raised Ground Screw	½ in. sides	½ in. bottom	¾ in. sides	¾ in. bottom	
½ in. deep								
BC56111	5.0	–	yes	–	4	–	–	–
1½ in. deep								
BC54151-K	15.0	–	yes	4	4	2	2	2
CI54151-KSSX	15.0	"SSX"	yes	2	4	2	2	2
BC55151-K	15.0	–	yes	4	–	2	–	–
2⅛ in. deep								
BC54171-K	21.0	–	yes	4	4	2	2	2
CI54171-KSSX	21.0	"SSX"	yes	2	4	2	2	2
CI54171-KSSX-1	21.0	"SSX-1"	yes	2	4	2	2	2
CI55171-K	21.0	–	yes	4	–	2	–	–

4 in. Octagonal boxes

Nonmetallic sheathed cable clamps

01 **BC54151-L**
Prepositioned depth tabs recessed 1/2 in.



01

02 **BC54151-LB**
Side bracket, with holding prongs and prepositioned depth tabs.



02

03 **BC54151-LD**
"Swing-arm" rework brackets. Max. wall thickness: 3/4 in.. Max. load capacity: 12 lb (5.5 kg).



03

04 **BC54171-L**



04

05 **BC54171-LB**
Side bracket, with holding prongs.



05

06 **CI54171-LF**
Ceiling fan box. (Supplied with 2 #10-32 machine screws and star washers.) Max. load capacity: 35 lb (15.6 kg).



06



Cat. No.	Volume (Cu. in.)	Features			Knockouts		Pryouts	
		Bracket	Raised Ground Screw	1/2 in. sides	1/2 in. bottom	Sides	Bottom	
1 1/2 in. deep								
BC54151-L	15.0	-	yes	2	1	4	4	
BC54151-LB	15.0	"B"	yes	1	1	4	4	
BC54151-LD	15.0	rework	yes	-	1	4	4	
CI54151-LF	15.0	-	yes	2	1	4	4	
2 1/8 in. deep								
BC54171-L	21.0	-	yes	2	1	4	4	
BC54171-LB	21.0	"B"	yes	1	1	4	4	
BC54171-LD	21.0	rework	-	-	1	4	4	
CI54171-LF	21.0	-	yes	2	1	4	4	

For use with nonmetallic sheathed cable only.

Note: CEC 2012 rule 30-302: Subrule (4) requires that a ceiling-mounted luminaire weighing 23 kg or less be supported on a ceiling outlet box attached directly to the building structure. A bar hanger may also be used to attach a ceiling outlet box to the building structure when the luminaire weighs 23 kg or less.

4 in. Octagonal boxes

Armoured cable clamps

—
01 BC54151-LA

—
02 BC54151-LSSAX
“Wraparound” bracket for 2¹/₂ in. and 3-⁵/₈ in. steel studs. With integral support bracket.

—
03 BC54171-LSSAX

—
04 BC54171-L

—
05 BC54171-LSSAX-5/8
Brackets for use with 5/8 in. drywall.



—
01



—
02



—
03



—
04



—
05



Cat. No.	Volume (Cu. in.)	Bracket	Features		Knockouts		Pryouts	
			Raised Ground Screw	1/2 in. sides	1/2 in. bottom	Sides	Bottom	
1¹/₂ in. Deep								
BC54151-LA	15.0	—	yes	2	1	4	—	—
BC54151-LSSAX	15.0	“SSX”	yes	—	1	4	—	—
2¹/₈ in. Deep								
BC54171-LA	21.0	—	yes	2	1	4	—	—
BC54171-LSSAX	21.0	“SSX”	yes	—	1	4	—	—
BC54171-LSSAX-5/8	21.0	“SSX”	yes	—	1	4	—	—

4 in. Octagonal boxes

Covers



BC54-C-1



BC54-C-6



CI54-C-64



BC54-C-65



BC54-C-94



BC54-COV



BC54-COV-1



Cat. No.	Description
4 in. round covers	
BC54-C-1	Flat blank
BC54-C-6	Flat with 1/2 in. conduit knockout
CI54-C-64	Flat for 1 13/32 in. diameter. 15 A single receptacle. Device mounting screws included
BC54-C-65	Flat for duplex receptacle. Device mounting screw included
BC54-C-94	Flat for toggle switch. Device mounting screws included
5 in. round covers (white enamel paint)	
BC54-COV	Flat with 1/2 in. conduit knockout. Mounting screws included
BC54-COV-1	Flat blank. Mounting screws included

4 in. Square boxes

Conduit knockouts

—
01 **BC52151-K**
Concentric knockouts.

—
02 **C152151-KSB**
Concentric knockouts with side bracket.

—
03 **BC52151-KSSX**
Concentric knockouts. "Wraparound" bracket for 2 1/2 in. and 3 5/8 in. steel studs. With integral support bracket. Mud / tile ring must be used.

—
04 **BC53151-K**
Concentric knockouts.



—
01



—
02



—
03



—
04



Cat. No.	Volume (Cu. in.)	Bracket	Features				Knockouts	
			Raised Ground Screw	1/2 in. sides	1/2 in. bottom	3/4 in. sides	3/4 in. bottom	
1 1/2 in. deep								
BC52151-K	21.0	—	yes	10	4	6	2	2
C152151-KSB	21.0	"SB"	yes	8	4	4	2	2
BC52151-KSSX	21.0	"SSX"	yes	7	4	3	2	2
BC53151-K	21.0	—	—	10	—	6	—	—

4 in. Square boxes

Conduit knockouts

01 **BC52171-HV-KIT**

02 **BC52171-KSSXHVKIT**

03 **BC52171-1-SSX-1/2**
"Wraparound" bracket for 2 1/2 in. and 3 5/8 in. steel studs. With integral support bracket. Brackets are positioned so the front of the box will be flush with 1/2" drywall.

04 **CI52171-1**
1 in. knockout

05 **BC52171-K**
Concentric knockouts. 1 in. knockout

06 **CI52171-KSB**
Concentric knockouts with side bracket.

07 **BC52171-KSSX**
Concentric knockouts. "Wraparound" bracket for 2 1/2 in. and 3 5/8 in. steel studs. With integral support bracket. Mud / Tile ring must be used.

08 **BC52171-KSSX-1/2**
Concentric knockouts. "Wraparound" bracket for 2 1/2 in. and 3 5/8 in. steel studs. With integral support bracket. Brackets are positioned so the front of the box will be flush with 1/2" drywall.

09 **BC53171-K**
Concentric knockouts.



01



02



03



04



05



06



07



08



09



Cat. No.	Volume (Cu. in.)	Features			Knockouts				
		Bracket	Raised Ground Screw	1/2 in. sides	1/2 in. bottom	3/4 in. sides	3/4 in. bottom	1 in. sides	
2 1/8 in. deep									
BC52171-HV-KIT	33,6	-	yes	6	-	2	-	-	
BC52171-KSSXHVKIT	33,6	"SSX"	yes	6	-	2	-	-	
CI52171-1	30,0	-	yes	-	4	-	2	4	
CI52171-1-SSX	30,0	"SSX"	yes	-	4	-	2	2	
BC52171-1-SSX-1/2	30,0	"SSX"	yes	-	4	-	2	2	
BC52171-K	30,0	-	yes	10	4	6	2	-	
CI52171-KSB	30,0	"SB"	yes	8	4	4	2	-	
BC52171-KSSX	30,0	"SSX"	yes	7	4	3	2	-	
BC52171-KSSX-F1	30,0	"SSX"	yes	6	4	2	2	-	
BC52171-KSSX-1/2	30,0	"SSX"	yes	7	4	3	2	-	
BC52171-K	30,0	-	-	10	-	6	-	-	

* Must be purchased as a kit. The tile ring cover alone as well as the box alone are not available.

4 in. Square boxes

Mud / plaster ring covers



BC52-C-1



BC52-C-6



52C31/2-25



BC52-C-0



CI52-C-10 to CI-52-C-62



BC52-C-0-B



BC52-C-00



BC52-C-17



Cat. No.	Description
Flat covers	
BC52-C-1	Blank
BC52-C-6	1/2 in. conduit knockout
Plaster ring cover	
52C31/2-25*	Raised 1/2 in. (3.5 cu. in.) Tapped ears on 2 3/4 in. centers
Single device covers	
BC52-C-0	Flat
BC52-C-0-B	Flat blank cover
CI52-C-10	Raised 1/8 in. (1.0 cu. in.)
BC52-C-13	Raised 1/2 in. (3.6 cu. in.)
CI52-C-14	Raised 3/4 in. (5.7 cu. in.)
CI52-C-14-5/8	Raised 5/8 in. (4.3 cu. in.)
CI52-C-15	Raised 7/8 in. (6.8 cu. in.)
CI52-C-16	Raised 1 1/4 in. (9.5 cu. in.)
CI52-C-62	Raised 1/4 in. (1.8 cu. in.)
Two device covers	
BC52-C-00	Flat
BC52-C-17	Raised 1/2 in. (6.2 cu. in.)
52 C 18*	Raised 3/4 in. (9.0 cu. in.)
52C185/8-25*	Raised 5/8 in. (7.3 cu. in.)

* UL Listed and CSA certified

4 in. Square boxes

Tile ring covers



BC52C49-1/2 to CI52-C-51-2



52 C 52 1/2 to 52 C 54 2



52CADJ



Cat. No.	Description
One device square cornered tile covers	
BC52C49-1/2	Raised 1/2 in. (3.4 cu. in.)
BC52C49-3/4	Raised 3/4 in. (5.3 cu. in.)
BC52-C-49-5/8	Raised 5/8 in. (4.3 cu. in.)
BC52-C-49-1	Raised 1 in. (6.8 cu. in.)
CI52-C-49-1 1/4	Raised 1 1/4 in. (8.6 cu. in.)
CI52-C-50-1 1/2	Raised 1 1/2 in. (10.0 cu. in.)
CI52-C-51-2	Raised 2 in. (14.0 cu. in.)
One device square cornered tile covers - adjustable	
52CADJ	Adjustable from 1/2 in. to 1 1/2 in. raise (from 3.4 to 10.0 cu. in.)
Two device square cornered tile covers	
52 C 52 1/2	Raised 1/2 in. (6.0 cu. in.)
52 C 52 5/8	Raised 5/8 in. (8.3 cu. in.)
52 C 52 3/4	Raised 3/4 in. (9.0 cu. in.)
52 C 52 1	Raised 1 in. (12.5 cu. in.)
52 C 52 1 1/4	Raised 1 1/4 in. (15.5 cu. in.)
52 C 53 1 1/2	Raised 1 1/2 in. (19.0 cu. in.)
52 C 54 2	Raised 2 in. (25.5 cu. in.)

4 in. Square boxes

Covers



BC8361



BC8362



BC8363



BC8364



BC8365



BC8366



BC8367



Cat. No.	Description
3/8 in. raised surface covers (4.6 cu. in.) device mount	
BC8361	One toggle switch
BC8362	For 2 5/8 in. diameter 30 / 50 A single receptacle
BC8363	For 1 13/32 in. diameter 15 A single receptacle
BC8364	For 1 19/32 in. diameter 20 / 30 A single locking receptacle
BC8365	One duplex receptacle
BC8366	For 2 9/64 in. diameter 30 A single receptacle
BC8367	Two toggle switches

Complete with device mounting screws

Cover	NEMA Configuration							NEMA
	A	V	Pole	Wire	Phase	Rec. Dia		
BC8363	15	125	2	3	1	1.406	5-15R	
BC8364	20	125	2	3	1	1.562	L5-20R	
BC8364	20	250	2	3	1	1.562	L6-20-R	
BC8364	20	347	2	3	1	1.562	L24-20R	
BC8364	20	600	2	3	1	1.562	L9-20R	
BC8364	20	125/250	3	3	1	1.562	L10-20R	
BC8364	20	250	3	3	3	1.562	L11-20R	
BC8364	20	125/250	3	4	3	1.562	L14-20R	
BC8366	30	125	2	3	1	2.109	5-30R	
BC8364	30	125	2	3	1	1.562	L5-30R	
BC8366	30	250	2	3	1	2.109	6-30R	
BC8364	30	250	2	3	1	1.562	L6-30R	
BC8362	30	125/250	3	4	3	2.647	14-30R	
BC8362	50	125/250	3	4	1	2.647	14-50R	

4 in. Square boxes

Covers



BC8368



BC8371



BC8375



BC8376



BC8377



BC8378



BC97002



Cat. No.	Description
³/₈ in. raised surface covers (4.6 cu. in.)	
BC8368	2 Decora/GFCI
BC8371	Two duplex receptacles
BC8375	One toggle switch, one duplex receptacle
BC8376	One Decora/GFCI
BC8377	One toggle switch, one Decora/GFCI
BC8378	One duplex receptacle, one Decora/GFCI
GFCI Conversion kits (stainless steel / steel)	
BC97002	To install GFCI on 4 in. square boxes. Complete with mounting screws

Complete with device mounting screws.

When extra capacity is required, the 8300 Series of 4 in. square covers can be mounted on a 72 Series of 4 11/16 in. square boxes using a C172-A-52 adaptor. (see page A46)

4 11/16 in. Square boxes

Conduit knockouts



01



02



03



04



05



06



07

01 **CI72151-K**
Concentric knockouts.

02 **BC73151-K**
Concentric knockouts.

03 **CI72171-1**
1" knockouts.

04 **BC72171-K**
Concentric knockouts.

05 **CI72171-KSB**
Concentric knockouts
with side bracket.

06 **CI72171-KSSX**
Concentric knockouts
with lateral support.
"Wraparound" brackets for
2 1/2 in. and 3 5/8 in. steel
studs.

07 **BC73171-K**
Concentric knockouts.



Cat. No.	Volume (Cu. in.)	Features						Knockouts	
		Bracket	Raised Ground Screw	1/2 in. sides	1/2 in. bottom	3/4 in. sides	3/4 in. bottom	1 in. sides	
1 1/2 in. deep									
CI72151-K	30.0	-	yes	10	4	6	2	-	
BC73151-K	30.0	-	-	10	-	6	-	-	
2 1/8 in. deep									
CI72171-1	42.0	-	yes	-	4	2	2	6	
BC72171-K	42.0	-	yes	10	4	6	2	-	
CI72171-KSB	42.0	"SB"	yes	8	4	2	2	-	
CI72171-KSSX	42.0	"SSX"	yes	4	4	4	2	-	
CI72171-1-SSX	42.0	"SSX"	yes	-	4	2	2	4	
BC73171-K	42.0	-	-	10	-	6	-	-	

4 11/16 in. Square boxes

Mud / Plaster ring covers



BC72-C-1



BC72-C-6



CI72-C-10 / CI72-C-13



72 C 17



72 C 14 5/8



72 C 18 5/8



CI72-A-52



Cat. No.	Description
Flat covers	
BC72-C-1	Blank
BC72-C-6	With concentric 1/2 in. and 3/4 in. conduit knockout
Single device covers	
CI72-C-10	Raised 1/8 in. (1.7 cu. in.)
CI72-C-13	Raised 1/2 in. (4.3 cu. in.)
72 C 14*	Raised 3/4 in. (5.0 cu. in.)
72 C 14 5/8*	Raised 5/8 in. (4.0 cu. in.)
Two device covers	
72 C 17*	Raised 1/2 in. (6.3 cu. in.)
72 C 18 5/8*	Raised 5/8 in. (7.5 cu. in.)
Adaptors	
CI72-A-52	To install 4 in. square covers on 4 11/16 in. square boxes. Raised 1/4 in. (3.0 cu. in.)

* UL Listed and CSA certified

Utility boxes and covers



CI2018



CI2018-SB



BC2020



BC2020-R



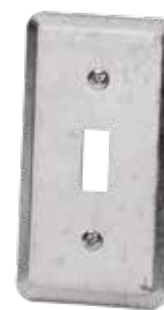
BC20-C-1



BC20-C-3



BC20-C-4



BC20-C-5



Cat. No.	Volume (Cu. in.)	Features					Knockouts 1/2 in. sides
		Bracket	Raised Ground Screw	1/2 in. ends	1/2 in. bottom	1/2 in. sides	
1 1/2 in. deep – 4 in. x 2 1/4 in.							
CI2018	13.0	–	no	2	2	6	
CI2018-SB	13.0	“SB”	no	2	2	3	
1 7/8 in. deep – 4 in. x 2 1/8 in.							
BC2020	14.0	–	yes	2	2	6	
BC2020-R	14.0	–	–	2	–	6	

Cat. No.	Description
Covers – 20 Series	
BC20-C-1	For duplex receptacle
BC20-C-3	For 1 13/32 in. diameter 15 A single receptacle
BC20-C-4	Blank
BC20-C-5	For toggle switch

Note: BC2020-R can be installed on CI2018 / BC2020 Series
Covers: Device mounting screws included

Utility boxes and covers



CI1141



BC1110



CI1110-SB



BC1110-LSKO



BC1110-SSX



BC1110-R



1151 (For toggle switch)



1198 (For Decora or GFCI)



1199
(For duplex receptacle)



BC11-C-1



BC11-C-2



BC11-C-3



BC11-C-4



BC11-C-5



BC11-C-10



CI11-C-10-HV



BC11-C-4-HV



BC11-C-5-HV



Cat. No.	Volume (Cu. in.)	Features			Knockouts		
		Bracket	Raised Ground Screw	1/2 in. ends	1/2 in. bottom	1/2 in. sides	
1 1/2 in. deep – 4 in. x 2 1/4 in.							
CI1141	13.0	mounting ears	no	2	2	6	
1 7/8 in. deep – 4 in. x 2 3/8 in.							
BC1110	16.5	–	yes	2	2	6	
CI1110-SB	16.5	“SB”	yes	2	2	3	
BC1110-R	16.5	–	–	2	–	6	
BC1110-LSKO	16.5	–	yes	2	2	–	
BC1110-SSX	16.5	“SSX”	yes	2	2	–	
2 1/8 in. deep – 4 in. x 2 1/2 in.							
1151*	18.5	–	yes	2	2	–	
1198*	18.5	–	yes	2	2	–	
1199*	18.5	–	yes	2	2	–	

* cULus listed

Cat. No.	Description	Cat. No.	Description
Covers – 11 Series			
BC11-C-1	For duplex receptacle	BC11-C-10	Decora/GFCI
BC11-C-2	For 1 19/32 in. diameter 15 A single receptacle	CI11-C-10-HV	Decora 347 V
BC11-C-3	For 1 13/32 in. diameter 15 A single receptacle	BC11-C-4-HV	Blank 347 V
BC11-C-4	Blank	BC11-C-5-HV	For toggle switch
BC11-C-5	For toggle switch		

Note: Covers: Device mounting screws included

Concrete rings and accessories

01 CI54531
Shown with cover installed.)



01

02 CI54571



02



03

03 CI53171-ER
Extension ring. Mounts directly on concrete rings.

04 CI54581 / CI54591



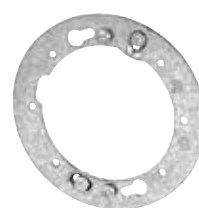
04

05 CI54560



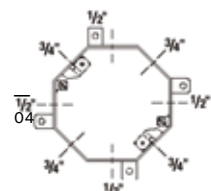
05

06 CICBA



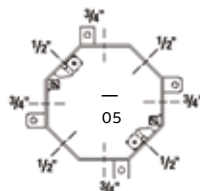
06

07 SKETCH A
Knockout configuration



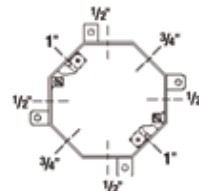
07

08 SKETCH B
Knockout configuration



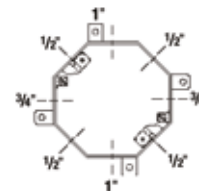
08

09 SKETCH C
Knockout configuration



09

10 SKETCH D
Knockout configuration



10



Cat. No.	Volume (Cu. in.)	Dimensions		Knockouts			Sketch
		H x W x D (in.)	1/2 in. sides	3/4 in. sides	1 in. sides		
Concrete rings							
CI54531	24.0	4 x 4 x 2	4	4	-	A	
CI54541	30.0	4 x 4 x 2 1/2	4	4	-	B	
CI54551	36.0	4 x 4 x 3	4	4	-	B	
CI54561	42.0	4 x 4 x 3 1/2	4	4	-	B	
CI54571	48.0	4 x 4 x 4	4	2	2	C	
CI54581	60.0	4 x 4 x 5	4	2	2	D	
CI54591	72.0	4 x 4 x 6	4	2	2	D	
Extension rings							
CI53171-ER	30.0	4 x 4 x 2 1/8	10	6	-	-	

Cat. No.	Description
Accessories	
CI54560	Round cover with 5 1/2 in. knockouts
CICBA	For quick mounting and alignment of octagonal extension ring (BC55151-K, CI55171-K) on concrete ring

Note: One CI54560 cover is supplied with each concrete ring

Carlton

Concrete rings / mud boxes

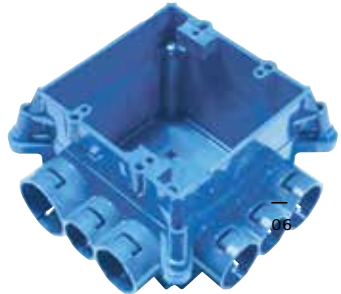
- 01 **A863CFG**
Mud box with ceiling ring.
- 02 **A863SG**
Mud box with one-gang ring.
- 03 **A863DG**
Mud box with two-gang ring.
- 04 **A863CFGF**
Mud box assemblies with mounting feet.



01



02



03



04



Cat. No.	Volume (Cu. in.)	Features	Hub Sizes		
			1/2 in.	3/4 in.	1 in.
Concrete rings / mud boxes					
A863CFG	41.8	—	4	6	2
A863SG	37.3	—	4	6	2
A863DG	44.0	—	4	6	2
A863CFGF	41.8	Mounting Feet	4	6	2
A863CSGF	37.3	Mounting Feet	4	6	2
A863CDGF	44.0	Mounting Feet	4	6	2
Reducers					
A273DE	3/4 in. to 1/2 in.	—	—	—	—
A273EF	1 in. to 3/4 in.	—	—	—	—

Carlton Mud Box Assemblies w/Mounting Feet are specifically engineered and designed for use in Tunnel Form applications. The mounting feet are located on all four corners and allow the box to attach directly to the wall of the form using pop rivets. The pop rivets help keep the box in position during the pour and provide a safe, secure, and rust resistant mount.

Masonry boxes and accessories



CIMBS-1-K



CIMBS-6-K



CIMBS-P



BCMBD-1-K



CIMBD-6-K



CIMBD-P



Cat. No.	Volume (Cu. in.)	Number of Gangs	Width (in.)	1/2 in. and 3/4 in. Concentric Knockouts			1/2 in., 3/4 in. and 1 in. Concentric KOs (ends)
				Sides	Bottom	Ends	
2 1/2 in. deep x 3 3/4 in. high							
CIMBS-1-K	14.0	1	2	4	2	2	-
CIMBS-2-K	28.0	2	3 25/32	4	4	4	-
CIMBS-3-K	42.0	3	5 19/32	4	6	6	-
CIMBS-4-K	56.0	4	7 13/32	4	8	8	-
CIMBS-5-K	70.0	5	9 7/32	4	10	10	-
CIMBS-6-K	84.0	6	11 1/32	4	12	12	-
3 1/2 in. deep x 3 3/4 in. high							
BCMBD-1-K	21.0	1	2	8	2	3	1
CIMBD-2-K	42.0	2	3 25/32	8	4	6	2
CIMBD-3-K	63.0	3	5 19/32	8	6	9	3
CIMBD-4-K	84.0	4	7 13/32	8	8	12	4
CIMBD-5-K	105.0	5	9 7/32	8	10	15	5
CIMBD-6-K	126.0	6	11 1/32	8	12	18	6

Note: On multi-gang boxes, lateral spacing between mounting holes is 1 13/16 in.

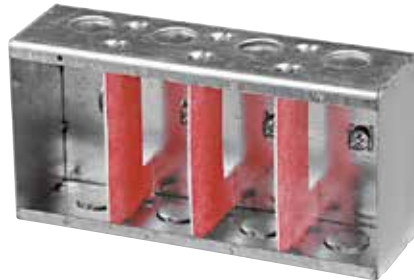
Cat. No.	Description
Accessories	
CIMBS-P	Steel partition for MBS 2 1/2 in. deep masonry boxes
CIMBD-P	Steel partition for MBD 3 1/2 in. deep masonry boxes

In accordance with C.E.C. 2012 Edition, Rule 12-3030: Conductors that are connected to different power or distribution transformers or other different sources of voltage shall not be installed in the same box, cabinet, or fitting unless a barrier of sheet steel not less than 1.3 mm thick or a flame-retardant nonmetallic insulating material not less than 1.6 mm in thickness is used to divide the space into separate compartments for the conductors of each system.

347 V Boxes



CIMBS-1-HV



CIMBS-4-HV (1 gang to 4 gangs)



CIMBD-1-HV



CIMBD-4-HV (1 gang to 4 gangs)



Cat. No.	Volume (Cu. in.)	Number of gangs	Width (in.)	Knockouts $\frac{1}{2}$ in ends
2 $\frac{3}{8}$ in. deep x 4 in. high				
CIMBS-1-HV	20.25	1	2 $\frac{1}{4}$	2
CIMBS-2-HV	20.25 / gang	2	4 $\frac{1}{16}$	4
CIMBS-3-HV	20.25 / gang	3	5 $\frac{7}{8}$	6
CIMBS-4-HV	20.25 / gang	4	7 $\frac{11}{16}$	8
3 $\frac{3}{8}$ in. deep x 4 in. high				
CIMBD-1-HV	22.5	1	2 $\frac{1}{4}$	4
CIMBD-2-HV	22.5 / gang	2	4 $\frac{1}{16}$	8
CIMBD-3-HV	22.5 / gang	3	5 $\frac{7}{8}$	12
CIMBD-4-HV	22.5 / gang	4	7 $\frac{11}{16}$	16

Note: All HV boxes have tapped holes spaced 3 $\frac{17}{32}$ in. to accommodate 347 V switches. Standard lateral spacing 1 $\frac{13}{16}$ in., on pre-ganged boxes. Pre-ganged boxes include fibre partitions

Partitions only

Accessories

CIMBS-HV-PART

CIMBD-HV-PART

347 V Boxes

Boxes and kits



BC52171-HV-KIT*



BC52171-KSSXHVKIT*



CI1204-1-HV



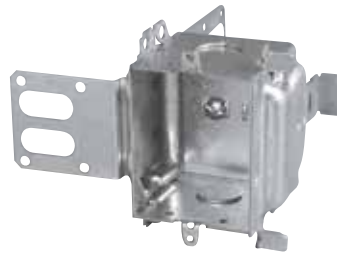
CI1204-2-HV



CI1204-LA-HV



CI1204-LSSAX-HV



CI1204-SSX-HV



Cat. No.	Volume (Cu. in.)	Number of Gangs	Dimensions H x W x D (in.)	Ears	Clamps	Features Brackets	Knockouts 1/2 in. ends	Pryouts ends
2 1/2 in. deep – gangable								
BC52171-HV-KIT*	33.6	1	4 x 4 x 2 1/8	–	–	–	2	–
BC52171-KSSXHVKIT*	33.6	1	4 x 4 x 2 1/8	–	–	–	2	–
CI1204-1-HV	16.0	1	3 x 2 1/4 x 2 1/2	recessed	–	–	2	–
CI1204-2-HV	32.0	2	3 x 4 1/2 x 2 1/2	recessed	–	–	4	–
CI1204-LA-HV	16.0	1	3 x 2 1/4 x 2 1/2	flush	BX	–	–	4
CI1204-LSSAX-HV	19.5	1	3 x 2 1/4 x 2 1/2	–	BX	“SSX”	–	4
CI1204-SSX-HV	19.5	1	3 x 2 1/4 x 2 1/2	–	–	“SSX”	2	–
CI1204-SS1X-HV	16.0	1	3 x 2 1/4 x 2 1/2	–	–	“SSX”	2	–
CI1204-LSSAX-HV-1	19.5	1	3 x 2 1/4 x 2 1/2	–	BX	“SSX”	–	4

Note: All HV boxes have tapped holes spaced 3 17/32 in. to accommodate 347 V switches. CI1204-2-HV includes CIHVP partition. On multigang boxes lateral spacing 2 1/4 in. When ganged, CIHVP partition must be installed between spacers.

* 1/2 in. raised cover. Must be purchased as a kit. The tile ring cover alone as well as the box alone are not available.

347 V Boxes

Boxes and covers



CI1110-HV



BC11-C-4-HV



BC11-C-5-HV



CI11-C-10-HV



CIFS-1G-1/2-HV / CIFS-1G-3/4-HV
Includes stamped aluminum "FS" cover.



CIFS-9-HV



Cat. No.	Volume (Cu. in.)	Number of Gangs	Dimensions H x W x D (in.)	Features Raised Ground Screw	Knockouts 1/2 in. ends
1 7/8 in. deep					
CI1110-HV	16.5	1	4 x 2 3/8 x 1 7/8	yes	2
347 V "FS" box kits – 1 7/8 in. deep (cast aluminum)					
CIFS-1G-1/2-HV	14.0	1	6 x 2 13/16 x 1 7/8	yes	1 x 1/2 hub
CIFS-1G-3/4-HV	14.0	1	6 x 2 13/16 x 1 7/8	yes	1 x 3/4 hub

Note: All HV boxes have tapped holes spaced 3 17/32 in. to accommodate 347 V switches.

Cat. No.	Description
347 V Utility box covers	
BC11-C-4-HV	Blank
BC11-C-5-HV	One toggle switch
CI11-C-10-HV	Decora

Cat. No.	Description
347 V "FS" Cover (stamped aluminum)	
CIFS-9-HV	One toggle switch

Mounting screws included.

347 V Boxes

Covers and accessories



CIHVP



CISBEX-HV



CI6851-HV



CI6852-HV



CI6853-HV



CI6854-HV



Cat. No.	Description
347 V Stainless steel wall plates (for CI1204-HV boxes)	
CI6851-HV	Single 347 V toggle switch
CI6852-HV	Two 347 V toggle switches
CI6853-HV	Three 347 V toggle switches
CI6854-HV	Four 347 V toggle switches

Note: Device mounting screws included. Lateral spacing 2¹/₄ in. on CI6852-HV / CI6853-HV / CI6854-HV

Cat. No.	Description
347 V Partitions (steel)	
CIHVP	High voltage partition to be used with 347 V boxes (CI1204 series) when ganged
347 V Device box extension	
CISBEX-HV	2 in. x 3 in. 347 V – Maximum adjustable depth – 1 ⁷ / ₈ in. – complete with mounting screws

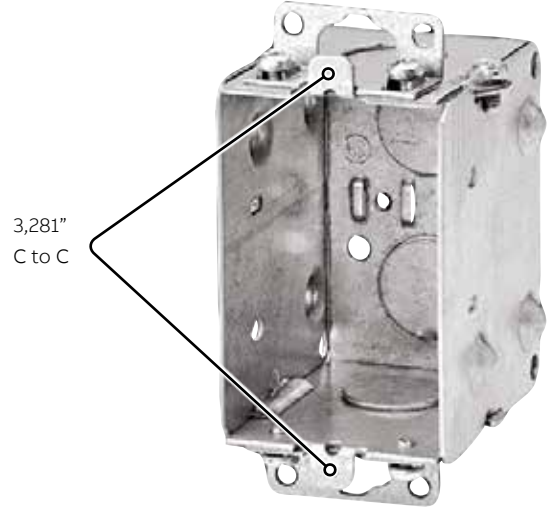
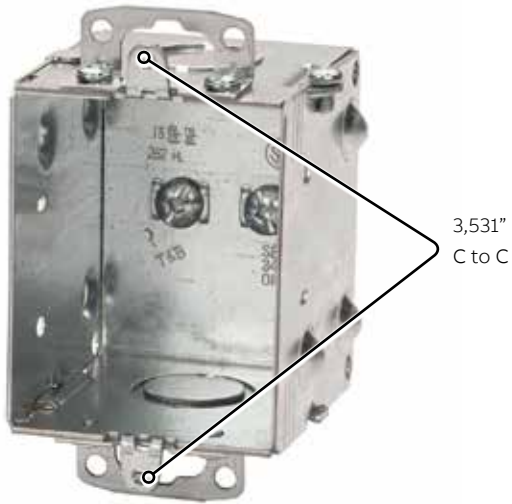
347 V Boxes

HV (347 V) vs Regular box spacing



CI1204-1-HV

BC1104

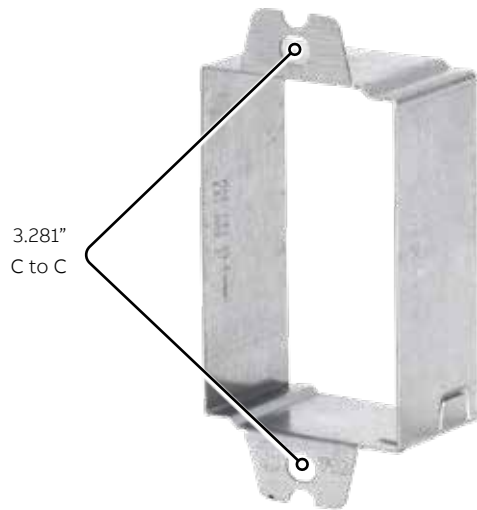
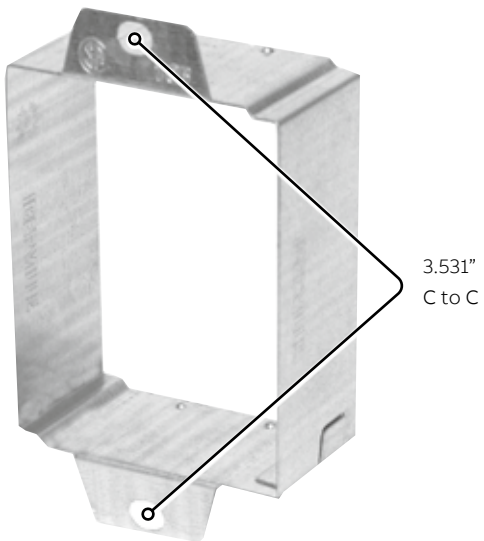


Extension Rings



CISBEX-HV

CISBEX



Power / Communication

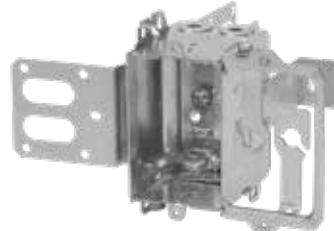
Boxes



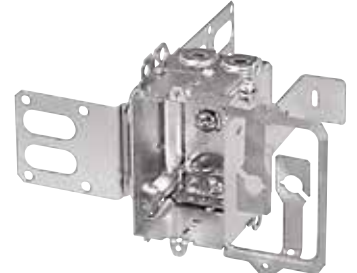
BC4104-L



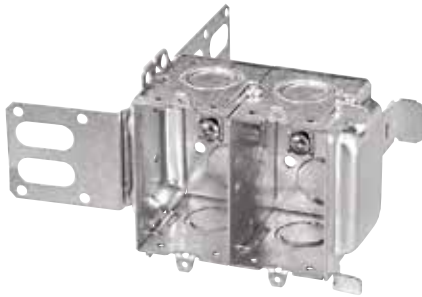
CI4104-LA



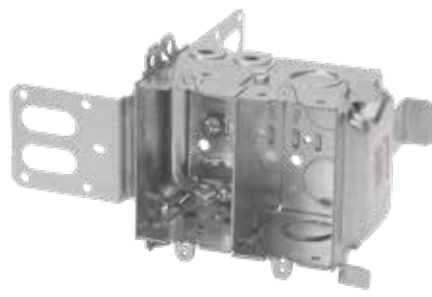
CI4304-LSSX



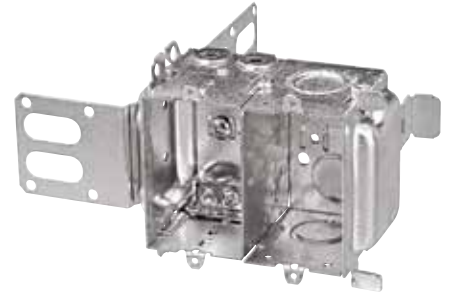
CI4304-LSSAX



CI4204-KSSX



CI4204-LSSX



CI4204-LSSAX



Cat. No.	Volume (Cu. in.)	Clamps	Features		Knockout			Pryouts ends
			Bracket		1/2 in. ends	1/2 in. bottom	3/4 in. ends	
2 1/2 in. deep – gangable – 3 in. x 2 in.								
BC4104-L	12.5	BX/Loomex	-	-	-	-	-	4
CI4104-LA	12.5	BX/Loomex	-	-	-	-	-	4
CI4304-LSSX	14.0	BX/Loomex	“SSX”	-	-	-	-	4
CI4304-LSSAX	14.0	BX/Loomex	“SSX”	-	-	-	-	4
2 1/2 in. deep – gangable – 3 in. x 4 in.								
CI4204-KSSX	14.0 / gang	-	“SSX”	4	4	4	-	-
CI4204-LSSX	14.0 / gang	Loomex / BX	“SSX”	2	2	2	-	4
CI4204-LSSAX	14.0 / gang	BX/Loomex	“SSX”	2	2	2	-	4
CI4204-LSSAX-1	14.0 / gang	BX/Loomex	“SSX”	2	2	2	-	4

Note: **4104, 4304 Series** consist of a 2 1/2 in. deep device box with a 90° folded side incorporating mounting holes for communication outlet and wire holders. The **4104 Series** is intended for installation on wood studs, while the **4304 Series** is intended for installation on 2 1/2 in. or 3 5/8 in. steel studs. The installation is completed with a standard 2 gang wall plate.

4204 Series intended for commercial or industrial installation on 2 1/2 in. or 3 5/8 in. steel studs, consists of a 2 1/2 in. deep device box (with or without cable clamps), pre-ganged with a concentric knockout box for communication outlet and separated by a steel partition. These boxes may also be used for power / power applications. The installation is completed with a standard 2 gang wall plate.

In accordance with C.E.C. 2012 Edition, Rule 12-3030: Conductors that are connected to different power or distribution transformers or other different sources of voltage shall not be installed in the same box, cabinet, or fitting unless a barrier of sheet steel not less than 1.3 mm thick or a flame-retardant nonmetallic insulating material not less than 1.6 mm in thickness is used to divide the space into separate compartments for the conductors of each system.

Power / Communication Accessories



* CIMB-0



* CIMB-1



CICSB-1



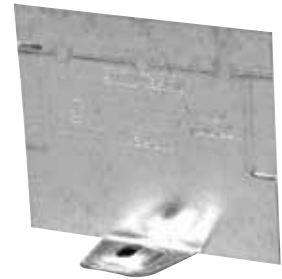
* WBF-1



CI1004-P



CI1104-P



CI2104-P



Cat. No.	Description
Low voltage mounting brackets	
CIMB-0*	Flat mounting brackets that provides quick installation of low voltage class 2 communication outlets. Positioning tabs ensure straight installation
CIMB-1*	Mounting brackets that provides quick installation of low voltage class 2 communication outlets. Raised 1/2 in. Positioning tabs ensure straight installation
CICSB-1	Mounting brackets that provides quick installation of low voltage communication outlets. May be used with all 2 1/2 in. deep gangable boxes
WBF-1*	Low voltage wall bracket
Device box partitions	
CI1004-P	Steel partitions for 2 in., 2 1/2 in. and 3 in. deep outlet boxes
CI1104-P†	Steel partitions for 2 1/2 in. deep gangable boxes. May be used with all 1104 and 3104 series of boxes
CI2104-P	Steel partitions for 2 in. and 2 1/2 in. deep outlet boxes

†Note: Install partition while ganging boxes

In accordance with C.E.C. 2012 Edition, Rule 12-3030: Conductors that are connected to different power or distribution transformers or other different sources of voltage shall not be installed in the same box, cabinet, or fitting unless a barrier of sheet steel not less than 1.3 mm thick or a flame-retardant nonmetallic insulating material not less than 1.6 mm in thickness is used to divide the space into separate compartments for the conductors of each system.

See page A72 for additional class 2 brackets

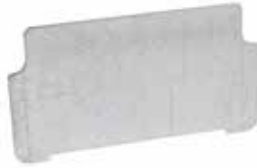
* Not applicable

Steel City Pre-Ganged boxes

Accessories and covers



3G 1/2 3/4CN



SGP



2 GC



Cat. No.	Volume (Cu. in.)	Number of Gangs	Width (in.)	Knockouts			Accepts
				sides	bottom	ends	
Pre-ganged boxes – 1 5/8 in. deep x 4 1/2 in. high							
2G 1/2 3/4CN	45.0	2	6 13/16	4x 1/2; 4x 3/4	3x 1/2; 2x 3/4	2x 1/2; 2x 3/4	2 GC or 3 GC
3G 1/2 3/4CN	58.0	3	8 5/8	6x 1/2; 4x 3/4	6x 1/2; 4x 3/4	2x 1/2; 2x 3/4	3 GC or 4 GC
4G 1/2 & 3/4-CN	70.0	4	10 7/16	6x 1/2; 6x 3/4	6x 1/2; 4x 3/4	2x 1/2; 2x 3/4	4 GC or 5 GC
5G 1/2 3/4CN	85.0	5	12 1/4	8x 1/2; 6x 3/4	6x 1/2; 4x 3/4	2x 1/2; 2x 3/4	5 GC or 6 GC
6G 1/2 3/4CN	98.0	6	14 1/16	8x 1/2; 8x 3/4	6x 1/2; 4x 3/4	2x 1/2; 2x 3/4	6 GC



Cat. No.	Volume (Cu. in.)	Number of Gangs	Width (in.)	Accepts
3/4 in. raised covers – 4 13/16 in. high				
2 GC	8.5	2	7	2G 1/2 3/4CN
3 GC	13.5	3	8 25/32	2G 1/2 3/4CN or 3G 1/2 3/4CN
4 GC	18.3	4	10 5/8	3G 1/2 3/4CN or 4G 1/2 & 3/4-CN
5 GC	23.0	5	12 7/16	4G 1/2 & 3/4-CN or 5G 1/2 3/4CN
6 GC	28.3	6	14 1/4	5G 1/2 3/4CN or 6G 1/2 3/4CN

3G 1/2 3/4CN or 4G 1/2 & 3/4-CN, all CIGBC covers have tapped holes spaced to accommodate standard switches and receptacles. Lateral spacing 1 13/16 in.

Cat. No.	Description
----------	-------------

Low voltage partitions (steel)

SGP	Steel low voltage partition for use with Steel City Pre-Ganged boxes, when conductors are connected to different sources
-----	--

In accordance with C.E.C. 2012 Edition, Rule 12-3030: Conductors that are connected to different power or distribution transformers or other different sources of voltage shall not be installed in the same box, cabinet, or fitting unless a barrier of sheet steel not less than 1.3 mm thick or a flame-retardant nonmetallic insulating material not less than 1.6 mm in thickness is used to divide the space into separate compartments for the conductors of each system.

Extension rings

Conduit knockouts



BC55151-K



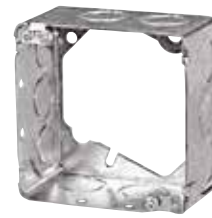
CI55171-K



BCOBEX



BC53151-K



CI53171-ER



BC53171-K



BC73151-K



BC73171-K



BC1110-R



BC2020-R



Cat. No.	Volume (Cu. in.)	Dimensions H x W x D (in.)	Knockouts	
			$\frac{1}{2}$ in. sides	$\frac{3}{4}$ in. sides
4 in. octagonal				
BC55151-K	15.0	4 x 4 x 1 $\frac{1}{2}$	4	2
CI55171-K	21.0	4 x 4 x 2 $\frac{1}{8}$	4	2
4 in. round				
BCOBEX	5.0	4 x 4 x 1 $\frac{1}{2}$	-	-
4 in. square				
BC53151-K	21.0	4 x 4 x 1 $\frac{1}{2}$	10	6
BC53171-K	30.0	4 x 4 x 2 $\frac{1}{8}$	10	6
4 -$\frac{11}{16}$ in. square				
BC73151-K	30.0	4 $\frac{11}{16}$ x 4 $\frac{11}{16}$ x 1 $\frac{1}{2}$	10	6
BC73171-K	42.0	4 $\frac{11}{16}$ x 4 $\frac{11}{16}$ x 2 $\frac{1}{8}$	10	6
Utility				
BC1110-R	16.5	4-2 $\frac{3}{8}$ x 1 $\frac{7}{8}$	6	-
BC2020-R	14.0	4-2 $\frac{1}{8}$ x 1 $\frac{7}{8}$	6	-
Concrete				
CI53171-ER	30.0	4 x 4 x 2 $\frac{1}{8}$	10	6

Rework boxes



01



02



03



04



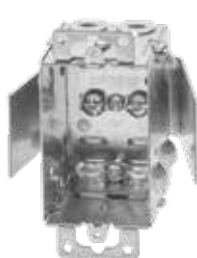
05



06



07



08



09



10



11

01 **CI425**
"Screwlok" brackets for rework installation.
Max. wall thickness: 5/8 in.

02 **CI425-L**
"Screwlok" brackets for rework installation.
Max. wall thickness: 5/8 in.

03 **CI525-L**
"Screwlok" brackets for rework installation.
Max. wall thickness: 5/8 in.

04 **BC775-LD**
"Swing-Arm" rework brackets.
Max. wall thickness: 3/4 in.

05 **BC777-LRB**
Pivoting ends for rework installation.
Non-gangable.
Max. wall thickness: 1 1/8 in.

06 **BC1004-LRB**
Flat sides for rework applications.

07 **BC1104-LRB**
Flat sides for rework applications

08 **BC1104-LRW**
Rework bracket for closed wall applications.
Max. wall thickness: 1 in.

09 **BC2104-LRB**
Flat sides for rework applications. 1 gang.

10 **BC2104-LRB-2**
Flat sides for rework applications. 2 gang.

11 **BC54151-LD**
"Swing-Arm" rework brackets. Max. wall thickness: 3/4 in.
Maximum load capacity: 12 lb (5.5 kg)



Cat. No.	Volume (Cu. in.)	Dimensions H x W x D (in.)	Features Clamps	Knockouts			Pryouts	
				Ends	Bottom	Ends	Sides	bottom
Device boxes								
CI425	10.0	3 x 2 x 2	-	2	1	-	-	-
CI425-L	10.0	3 x 2 x 2	Loomex/BX	-	-	4	-	-
CI525-L	12.5	3 x 2 x 2 1/2	Loomex/BX	-	-	4	-	-
BC775-LD	10.0	3 x 2 x 2 1/4	Loomex	-	1	4	-	-
BC777-LRB*	11.0	3 x 2 x 2 1/4	Loomex	-	1	4	-	-
BC1004-LRB	15.0	3 x 2 x 3	Loomex/BX	-	1	4	-	-
BC1102-LRB	10.0	3 x 2 x 2	Loomex/BX	-	-	4	-	-
BC1104-LRB	12.5	3 x 2 x 2 1/2	Loomex/BX	-	-	4	-	-
BC1104-LRW	12.5	3 x 2 x 2 1/2	Loomex/BX	-	-	4	-	-
BC2104-LRB*	12.5	3 x 2 x 2 1/2	Loomex/BX	-	-	4	-	-
BC2104-LRB-2*	25.0	3 x 4 x 2 1/2	Loomex/BX	-	-	8	-	-
Octagonal boxes								
BC54151-LD	15.0	4 x 4 x 1 1/2	Loomex	-	1	-	4	4
BC54171-LD	21.0	4 x 4 x 2 1/8	Loomex	-	1	-	4	4

* Non-gangable

Rework applications

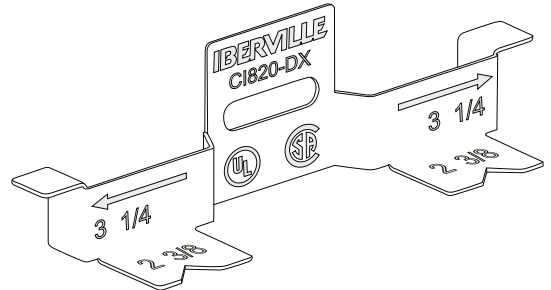
CI820-DX Mounting instructions

Device box supports:

CI820-DX is suitable for all device boxes incorporating mounting ears.



01



02



03



04



05



06



01 After determining the location for the device, trace a $2\frac{5}{16}$ in. by $3\frac{1}{4}$ in. pattern on the drywall and carefully cut out the pattern keeping within the confines of the lines.

02 Pull the cables through the opening and secure them to the outlet box.

03 Snap one CI820-DX into place on each side of the opening.

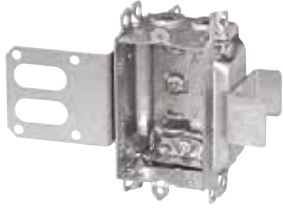
04 Push the outlet box into the opening ensuring that the mounting ears are flush to the drywall and do not piggyback onto the flanges of the CI820-DX. Bend the protrusions over the sides of the box and crimp into place. (It is recommended that pliers be used to ensure a strong hold on the box.)

05 Proceed to wire the device using approved wiring procedures.

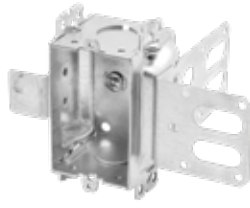
06 The box is secured in place.

Steel stud boxes

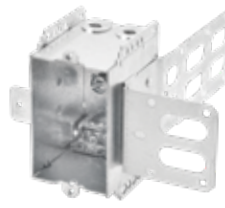
Device boxes



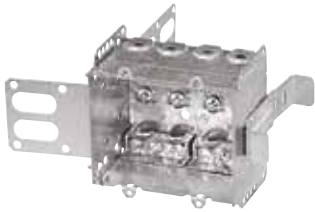
CI3102-LSSAX



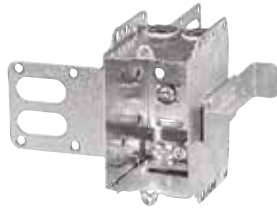
CI3102-SSX



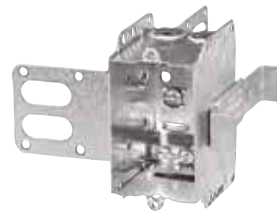
CI2104-LSSAX



CI2104-LSSA-2X



CI2104-LSSX



CI2104-LSS1X-1



CI2104-LSS2X-1



CI2104-LSS3X-1



CI-2104-LSS-2X



CI-2104-LSS-3X



CISSX-6



Cat. No.	Volume (Cu. in.)	Width (in.)	Features Clamps	Knockouts			Pryouts ends
				1/2 in. ends	1/2 in. bottom	3/4 in. ends	
Device boxes – 2 in. deep – gangable – 3 in. high							
CI3102-LSSAX	12.0	2	BX/Loomex	–	–	–	4
CI3102-SSX	12.0	2	–	2	–	–	–
Device boxes – 2 1/2 in. deep – pre-ganged – 3 in. high							
CI2104-LSSAX	12.5	2	BX/Loomex	–	–	–	4
CI2104-LSSA-2X	25.0	3 3/4	BX/Loomex	–	–	–	8
CI2104-LSSA-3X	37.5	5 1/2	BX/Loomex	–	–	–	12
CI2104-LSSA-4X	50.0	7 3/8	BX/Loomex	–	–	–	16
CI2104-LSSX	12.5	2	Loomex/BX	–	–	–	4
CI2104-LSS1X-1	12.5	2	Loomex/BX	–	–	–	4
CI2104-LSS2X-1	25.0	3 3/4	Loomex/BX	–	–	–	8
CI2104-LSS3X-1	37.5	5 1/2	Loomex/BX	–	–	–	12
CI-2104-LSS-2X	25.0	3 3/4	Loomex/BX	–	–	–	8
CI-2104-LSS-3X	37.5	5 1/2	Loomex/BX	–	–	–	12
CI2104-LSS-4X	50.0	7 3/8	Loomex/BX	–	–	–	16

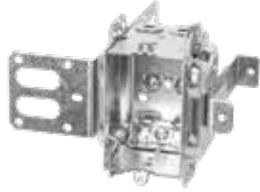
Cat. No.	Description
Support brackets	
CISSX-6	Support bracket extension for 6 in. metal stud

Steel stud boxes

Device boxes



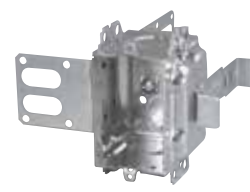
CI3104-KSSX



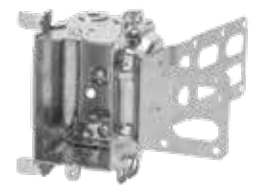
CI3104-KSSX-5/8



CI3104-KSSX-NG*



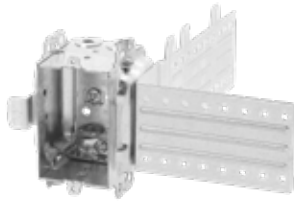
BC3104-KSS1X-1



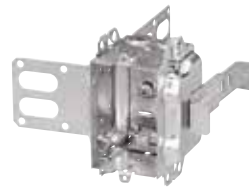
BC3104-LSSAX



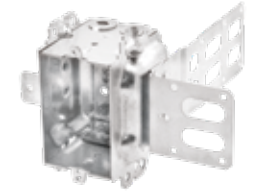
BC3104-LSSX



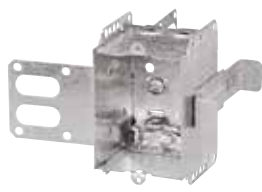
BC3104-LSSAX-NG*



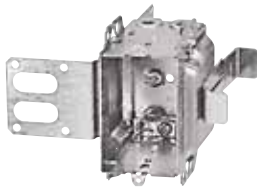
CI3104-LSS1X-1



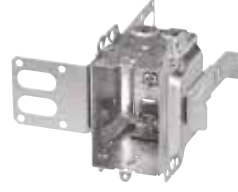
CI3104-LSSA1X-1



CI1504-LSSAX



CI3004-LSSAX-1



CI3004-LSSX-1



CISSX-6

* Heavy-duty adjustable bracket that provides solid support even up to 3-1/2 in. away from steel studs.



Cat. No.	Volume (Cu. in.)	Features Clamps	Knockouts			Pryouts ends
			1/2 in. ends	1/2 in. bottom	3/4 in. ends	
Device boxes – 2 1/2 in. deep – gangable – 3 in. x 2 in.						
CI3104-KSSX	16.0	–	2	2	2	–
CI3104-KSSX-5/8	16.0	–	2	2	2	–
CI3104-KSSX-NG*	16.0	–	2	2	2	–
BC3104-KSS1X-1	16.0	–	2	2	2	–
BC3104-LSSAX	16.0	BX/Loomex	–	–	–	4
BC3104-LSSAX-NG*	16.0	BX/Loomex	–	–	–	4
BC3104-LSSX	16.0	Loomex/BX	–	–	–	4
CI3104-LSS1X-1	16.0	Loomex/BX	–	–	–	4
CI3104-LSSA1X-1	16.0	BX/Loomex	–	–	–	4
CI3104-SSX	16.0	Loomex/BX	2	2	–	–
Device boxes – 2 1/2 in. deep – non-gangable – 3 in. x 2 1/4 in.						
CI1504-LSSAX	15.0	Loomex/BX	–	–	–	4
Device boxes – 3 in. deep – gangable – 3 in. x 2 in.						
CI3004-LSSAX-1	18.0	BX/Loomex	–	–	–	4
CI3004-LSSX	18.0	Loomex/BX	–	–	–	4
CI3004-LSSX-1	18.0	Loomex/BX	–	–	–	4

* Heavy-duty adjustable bracket that provides solid support even up to 3 1/2 in. away from steel studs and supplied with raised ground screws.

Cat. No.	Description
Support brackets	
CISSX-6	Support bracket extension for 6 in. metal stud

Steel stud boxes

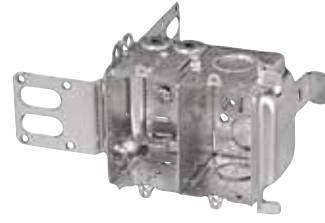
347 V Boxes and power communication boxes



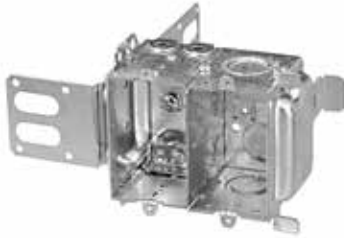
CI1204-LSSAX-HV



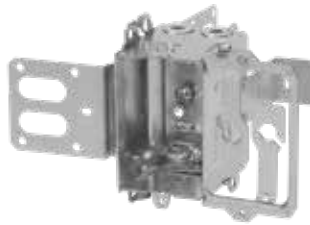
CI4204-KSSX



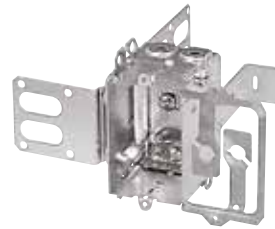
CI4204-LSSX



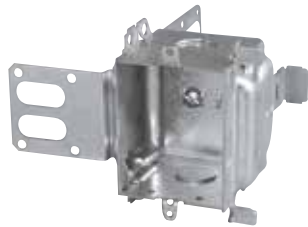
CI4204-LSSAX



CI4304-LSSX



CI4304-LSSAX



CI1204-SSX-HV



CI1204-SS1X-HV



CISSX-6



Cat. No.	Volume (Cu. in.)	Features Clamps	Knockouts			Pryouts ends
			1/2 in. ends	1/2 in. bottom	3/4 in. ends	
347 V boxes – 2 1/2 in. deep – gangable – 3 in. x 2 1/4 in						
CI1204-SSX-HV	19.5	–	2	–	–	–
CI1204-LSSAX-HV	19.5	BX/Loomex	–	–	–	4
CI1204-SS1X-HV	16.0	–	2	–	–	–
Power / Communication boxes – 2 1/2 in. deep – pre-ganged – 3 in. x 2 in. / gang						
CI4204-KSSX	12.5 / gang	–	4	4	4	–
CI4204-LSSX	12.5 / gang	Loomex/BX	2	2	2	4
CI4204-LSSAX	12.5 / gang	BX/Loomex	2	2	2	4
CI4204-LSSAX-1	12.5 / gang	BX/Loomex	2	2	2	4
CI4304-LSSX	12.5 / gang	Loomex/BX	–	–	–	4
CI4304-LSSAX	12.5 / gang	BX/Loomex	–	–	–	4

Cat. No.	Description
Support brackets	
CISSX-6	Support bracket extension for 6 in. metal stud

Steel stud boxes

4 in. and 4-11/16 in. square boxes and 4 in. octagonal boxes



* Heavy-duty adjustable bracket that provides solid support even up to 3-1/2 in. away from steel studs.



Cat. No.	Volume (Cu. in.)	Clamps	Knockouts				Pryouts sides
			1/2 in. sides	1/2 in. bottom	3/4 in. sides	3/4 in. bottom	
4 in. square boxes – 1 1/2 in. deep							
BC52151-KSSX	21.0	-	7	4	3	2	-
BC52151-KSSX-NG*	21.0	-	7	4	3	2	-
4 in. square boxes – 2 1/8 in. deep							
BC52171-KSSX	30.0	-	7	4	3	2	-
BC52171-KSSX-NG*	30.0	-	7	4	3	2	-
BC52171-KSSX-1/2	30.0	-	7	4	3	2	-
BC52171-KSSX-F1	30.0	-	6	4	2	2	-
BC52171-1-SSX-1/2	30.0	-	-	4	-	2	2
4 11/16 in. square boxes – 2 1/8 in. deep							
CI72171-KSSX	42.0	-	8	4	4	2	-
4 in. octagonal boxes – 1 1/2 in. deep							
CI54151-KSSX	15.0	-	2	1	2	2	-
BC54151-LSSAX	15.0	BX/Loomex	-	1	-	-	4
BC54151-LSSAX-NG*	15.0	BX/Loomex	-	1	-	-	4
4 in. octagonal boxes – 2 1/8 in. deep							
CI54171-KSSX	21.0	-	2	4	2	2	-
CI54171-KSSX-5/8	21.0	-	2	4	2	2	-
4 in. square – 2 1/8 in. deep							
BC52171-KSSXHVKIT	33.6	-	6	-	2	-	-

* Heavy-duty adjustable bracket that provides solid support even up to 3 1/2 in. away from steel studs and supplied with raised ground screws.

Cat. No.	Volume (Cu. in.)	Brackets	Features			Knockouts 1/2 in. sides
			Raised Ground Screw	1/2 in. ends	1/2 in. bottom	
4 in. square boxes – 1 1/2 in. deep						
BC1110-SSX	16.5	"SSX"	yes	7	4	3

Bar hangers and brackets



BCBK-01



BCBK-20



6010DW-25 / 6010ADW-25



6011DW-25 / 6011ADW-25



C11060



Cat. No.	Description
Bar hangers	
BCBK-01	Adjustable hanger for wood stud. Length: 15.5 in. Height: 2.5 in.
BCBK-20	Adjustable hanger for octagonal boxes for furring channel. Width: 4 1/2 in. x Height: 1 3/8 in. x Length: 21 1/8 in.
C11060	Length: 16 in. Grooved for box ears



Cat. No.	Description	Maximum Load Capacity	Length
Adjustable bar hangers for 3/8 in., 1/2 in. and 5/8 in. drywall and plaster			
6010DW-25	Score marks for drywall and plaster depths. Packaged complete with stud.	50 lb (22.7 kg)	10 1/2 in. to 18 in.
6010ADW-25	Score marks for drywall and plaster depths. Packaged complete with stud.	50 lb (22.7 kg)	14 1/2 in. to 25 in.
6011DW-25	Score marks for drywall and plaster depths. Packaged complete with fastener.	50 lb (22.7 kg)	10 1/2 in. to 18 in.
6011ADW-25	Score marks for drywall and plaster depths. Packaged complete with fastener.	50 lb (22.7 kg)	14 1/2 in. to 25 in.

Note: These products replace Iberville BC1041 and BC1042 bar hangers.

Steel City Bar hangers and brackets

Extra heavy-duty new work bar hanger

Ceiling fan and light fixture bar hanger

This innovative extruded-aluminum bar hanger was designed for strength. It is cULus Listed for up to 70 lb for fan support and 200 lb for fixture support.

Features and benefits

- Gold Glav-Krom™ finish on mounting screws easily identifies hanger as meeting CEC & cULus requirements for fan or light fixture
- Screwed-on end plates are consistently strong and avoid unsightly welds
- End plates feature temporary fixing spikes for hands-free installation
- Expandable for joints spaced from 14.5 in. to 24 in.



Cat. No.	Description	Volume (Cu. in.)
54151CFB-NW	New work bar hanger with 4 in. octagonal 1½ in. deep box with NMD90 cable clamps (wood screws included). Maximum load capacity: Fan 70 lb and fixture 200 lb	15.8

Steel City Bar hangers and brackets

Extra heavy-duty rework bar hanger

Ceiling fan and light fixture bar hanger

Exhaustive research and development has resulted in an innovative ceiling fan support boxes that give ABB the competitive advantage. Ceiling fan and fixture installation is faster, easier and safer with Steel City ceiling fan support boxes.

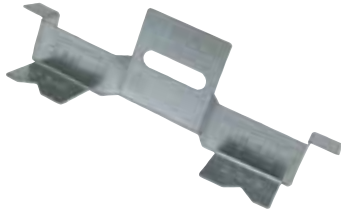
Features and benefits

- Gold Glav-Krom™ finish on mounting screws easily identifies hanger as meeting CEC & cULus requirements for fan or light fixture
- cULus Listed up to 70 lb for fan and 200 lb for light fixture
- Square end plates keep the bar parallel with sheetrock
- Expandable for joints spaced from 14.5 in. to 24 in.



Cat. No.	Description	Volume (Cu. in.)
54151CFB-OW	Rework bar hanger with 4 in. octagonal 1½ in. deep box with NMD90 cable clamps. Maximum load capacity: Fan 70 lb and fixture 200 lb	15.8

Brackets, clamps, partitions



C1820-DX



C1820D



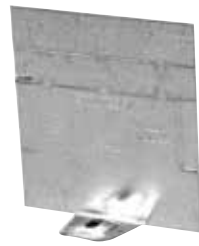
C1LRW



CILA CLAMP



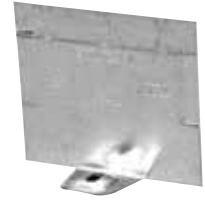
CISSX-6



CI1004-P



CI1104-P



CI2104-P



Cat. No.	Description
Rework support brackets	
C1820D	Device box supports. Max. wall thickness 1 in.
C1820-DX	Device box support
C1LRW	For installing CI1104 series of boxes with ears, in closed wall "rework" applications. Complete with an 8-32 x 1 1/2 screw
Universal cable clamps (for BX / Loomex)	
CILA CLAMP	Supplied with screws
Support brackets	
CISSX-6	Support bracket extension for 6 in. metal stud
Device box partitions	
CI1004-P	Steel partitions for 2 in., 2 1/2 in. and 3 in. deep outlet boxes
CI1104-P*	Steel partitions for 2 1/2 in. deep gangable boxes. To be used with CI-1104 / CI-3104 Series of boxes
CI2104-P	Steel partitions for 2 in. and 2 1/2 in. deep outlet boxes

*Note: Install partition while ganging boxes

In accordance with C.E.C. 2012 Edition, Rule 12-3030: Conductors that are connected to different power or distribution transformers or other different sources of voltage shall not be installed in the same box, cabinet, or fitting unless a barrier of sheet steel not less than 1.3 mm thick or a flame-retardant nonmetallic insulating material not less than 1.6 mm in thickness is used to divide the space into separate compartments for the conductors of each system.

Accessories



CISBEX



CIXCUBE



CISBEX-HV



CI1SCREAR/SCR



CI2SCREAR/SCR



GS-1-IB



Cat. No.	Description
Device box extensions	
CISBEX	2 in. x 3 in. switch box extension. Maximum adjustable depth is 7/8 in. Complete with mounting screws
CISBEX-HV	2 in. x 3 in. switch box extension. High voltage (347 V) for use with CI1204-HV Series. Maximum adjustable depth is 7/8 in. Complete with mounting screws
CIXCUBE	Adds 5.5 cu. in. to any 2 1/2 in. deep gangable device box. Provision for external nailing
Ground screws	
GS-1-IB	8-32 x 5/16 in. large combination head screw - ground screw
CI1SCREAR/SCR	Box ear and screw only, one hole model
CI2SCREAR/SCR	Box ear and screw only, one hole model



CI66



CI66-FPP



CI66-PPH



CI66-SS



CI66-XL



CI66-XL-2



CI66-T



Cat. No.	Dimensions W x H (in.)	Dimensions W x H (in.)
Cable protector plates		
CI66	Wood stud protector plate	1 3/8 x 3
CI66-FPP	Wood latte (furring) protector plate	2 3/8 x 3-1/2
CI66-PPH	Horizontal protector plate	1 1/4 x 3
CI66-SS	Steel stud protector plate	4 3/8 x 1 7/8
CI66-XL	X-Large protector plate	4 1/4 x 3-3/4
CI66-XL-2	Double X-Large protector plate	8 1/2 x 3-3/4
CI66-T	Protector sleeve or tube	4 1/4 x 3/4

In accordance with C.E.C., 2012 Edition, rule 12-516

Low voltage brackets

Steel

Features and benefits

- Eliminates the need for an electrical box when installing low voltage Class 2 wiring
- For old work or new work
- Installs easily with a drywall saw and screwdriver



CIMB-0



CIMB-1



CICSB-1



WBF-1

Cat. No.	Description
Low voltage mounting brackets	
CIMB-0	Flat mounting brackets that provides quick installation of low voltage class 2 communication outlets. Positioning tabs ensure straight installation
CIMB-1	Mounting bracket that provides quick installation of low voltage class 2 communication outlets. Raised 1/2 in. Positioning tabs ensure straight installation
CICSB-1	Mounting brackets that provides quick installation of low voltage communication outlets. May be used with all 2 1/2 in. deep gangable boxes
WBF-1	Low voltage wall bracket



CI1544



CI1544P



CIS-1X2



CIS-2 / CIS-4

Cat. No.	Dimensions (in.)		Hole Size (in.)	Suggested Application NMD90 (loomex)
	H	W		
Nailing straps (Zinc plated steel)				
CI1544	0.25	0.51	-	14/2-12/2
Nailing straps (Polyethylene)				
CI1544-P	0.25	0.49	-	14/2-12/2
CI1546-P	0.25	0.75	-	14/2-8/2
Cable staples (Galvanized steel)				
CIS-1	0.25	0.48	-	14/2-12/2
CIS-2	0.44	0.54	-	14/2-10/2; 14/3-10/3; 2 cables 14/2; 2 cables 12/2
CIS-3	0.49	0.70	-	10/2-8/2; 14/3-10/3
CIS-4	0.76	0.86	-	8/3-6/3
Double cable staples (Galvanized steel)				
CIS-1X2	0.25	0.48 X 2	-	14/2-12/2
CIS-1X2-FP3	0.25	0.48 X 2	-	
CIS-1X2-FP5	0.25	0.48 X 2	-	

Low voltage brackets

Nonmetallic

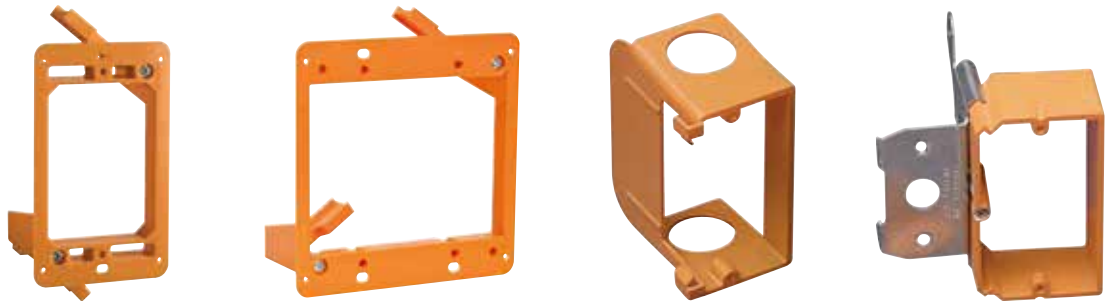
—
01 SC100A, SC200A, SC300A
 Open-backed to easily accommodate the bend radiuses required for low voltage cabling and deep devices such as volume controls, and is designed to fit a standard two-gang three-gang faceplate. It also features an easy nail-on mounting or screw-in bracket, while more hard shell provides increased durability and no racking.

—
01

—
02 SC100RR
 Swing arm rework bracket. 1 gang.

—
03 SC200RR
 Swing arm rework bracket. 2 gang.

—
04 SC100SC
 This low voltage bracket provides a low voltage outlet next to a previously installed high voltage outlet. For new construction and rework. Attaches easily to most electrical boxes, and is designed to fit a standard two-gang faceplate.

—
02—
03—
04—
05

—
05 SC100ADJC
 New work adjustable low voltage bracket. 1 gang.

Cat. No.	Description
Low voltage brackets	
SC100A	One-gang backless bracket 2.32 in. W x 3.73 in. L
SC200A	Two-gang backless bracket 5.35 in. W x 3.81 in. L
SC300A	Three-gang backless bracket 8.69 in. W x 7.20 in. L
Old work backless brackets	
SC100RR	One-gang backless old work bracket w/ swing clamps 2 ¹ / ₄ in. x 3 ¹ / ₄ in.
SC200RR	Two-gang backless old work bracket w/ swing clamps 3.92 in. x 4.00 in.
Low voltage add-on bracket	
SC100SC	One-gang add-on bracket 1.80 in. W x 3.68 in. L
One-gang and two gang – low voltage	
SC100ADJC	One-gang adjustable brackless bracket 3 ⁷ / ₈ in. W x 3 ³ / ₄ in. H
SC200ADJC	Two-gang adjustable brackless bracket 5 ⁵ / ₈ in. W x 3 ⁵ / ₈ in. H
CSA not applicable	

Vapour barriers

Features and benefits

- Made from tough, resistant material which can be used without cracking at extreme cold temperatures
- Transparent material makes installation easy and safe
- Flange is constructed to ensure a good seal on panel surface



BCVB-1



BCVB-2



BCVB-3



CIVB-4



BCVB-54



CI1004-VB



CI5254-VB



CI72171-VB



CIDS-55



Cat. No.	Description
Vapour barriers – soft shell	
BCVB-1*	For 2 in. x 3 in. single device boxes up to 3 in. deep
BCVB-2*	For 4 in. square and 2 gang 2 in. x 3 in. device boxes up to 3 in. deep
BCVB-3*	For 3 gang 2 in. x 3 in. device boxes up to 3 in. deep
CIVB-4*	For 4 gang 2 in. x 3 in. device boxes up to 3 in. deep
BCVB-54*	For octagonal boxes up to 2 1/8 in. deep
Vapour barriers – hard shell	
CI1004-VB*	For 2 in. x 3 in. single device boxes up to 3 in. deep
CI5254-VB*	For 4 in. square and 2 gang 2 in. x 3 in. boxes up to 3 in. deep
CI72171-VB*	For 4 11/16 in. square boxes up to 2 1/8 in. deep
Door switches	
CIDS-55	3 11/16 in. H x 1 11/32 in. W x 1 1/2 in. deep 4.5 cu. in. Light's on when door's opened Kit contains: • 3 A, 125 V A.C. switch with steel push button • Steel box and mounting plate • Mounting screws and wire connectors • Instruction sheet



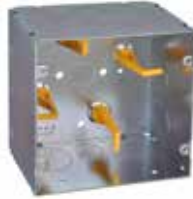
*CSA not applicable

Steel City 5 Square™ boxes

Telecommunication boxes



82181T-1-114



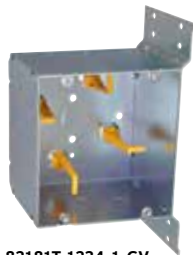
82181T-1234-1



82181T-1



82181T-1-114-CV



82181T-1234-1-CV



82181T-1-CV



Cat. No.	Volume (Cu. in.)	Bracket	Knockouts	Std. Ctn.
2¹/₈ in. deep, cable management posts				
82181T-1-114	64	–	4 sides: (1) 1 in. and (1) 1 ¹ / ₄ in.; back: (1) 1 ¹ / ₂ in.	20
82181T-1234-1	64	–	4 sides: (1) 1 ¹ / ₂ in., (1) 3 ³ / ₄ in. and (1) 1 in.; back: (1) 1 ¹ / ₂ in.	20
82181T-1	64	–	4 sides: (2) 1 in.; back: (1) 1 ¹ / ₂ in.	20
82181T-1-114-CV	64	CV	3 sides: (1) 1 in. and (1) 1 ¹ / ₄ in.; back: (1) 1 ¹ / ₂ in.	20
82181T-1234-1-CV	64	CV	3 sides: (1) 1 ¹ / ₂ in., (1) 3 ³ / ₄ in. and (1) 1 in.; back: (1) 1 ¹ / ₂ in.	20
82181T-1-CV	64	CV	3 sides: (2) 1 in.; back: (1) 1 ¹ / ₂ in.	20

Note: Use on Class 2 and Class 3 remote control, signaling and power-limited circuits only.

Steel City 5 Square boxes

Device covers



82C-1G-0



82C-1G-1/4



82C-1G-1/2



82C-1G-5/8



82C-1G-3/4



82C-1G-1



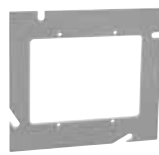
82C-1G-1-1/4



82C-1G-1-1/2



82C-1G-2



82C-2G-0



82C-2G-1/4



82C-2G-1/2



82C-2G-5/8



82C-2G-3/4



82C-2G-1



82C-2G-1-1/4



82C-2G-1-1/2



82C-2G-2



Cat. No.	Raised (in.)	Volume (Cu. in.)	Std. Ctn.
Single gang			
82C-1G-0	Flat	–	20
82C-1G-1/4	1/4	1.5	20
82C-1G-1/2	1/2	3.5	20
82C-1G-5/8	5/8	4.3	20
82C-1G-3/4	3/4	5.3	20
82C-1G-1	1	6.8	20
82C-1G-1-1/4	1 1/4	8.5	20
82C-1G-1-1/2	1 1/2	10.5	20
82C-1G-2	2	14.0	20
Double gang			
82C-2G-0	Flat	–	20
82C-2G-1/4	1/4	3.0	20
82C-2G-1/2	1/2	6.3	20
82C-2G-5/8	5/8	7.8	20
82C-2G-3/4	3/4	9.5	20
82C-2G-1	1	12.8	20
82C-2G-1-1/4	1 1/4	17.0	20
82C-2G-1-1/2	1 1/2	20.0	20
82C-2G-2	2	26.0	20

Steel City 5 Square boxes

Fire signal boxes and adapters



82181-12-1



82181-1234



82181-1234-1



82181-1234-RD



82181-12-1-CV



82181-1234-CV



82181-1234-1-CV

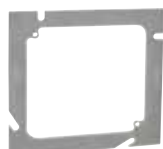


82181-1234-CVRD

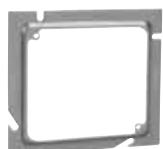


Cat. No.	Volume (Cu. in.)	Bracket	Red	Knockouts	Std. Ctn.
Fire signal boxes — 2⁷/₈ in. deep					
82181-12-1	67	—	—	4 sides: (1) 1/2 in. and (2) 1 in.; back: (3) 1/2 in. and (2) 3/4 in.	20
82181-1234	67	—	—	4 sides: (1) 1/2 in. and (2) 1/2 in. / 3/4 in.; back: (3) 1/2 in. and (2) 1/2 in. / 3/4 in.	20
82181-1234-1	67	—	—	4 sides: (1) 1/2 in., (1) 1/2 in. / 3/4 in. and (1) 1 in.; back: (3) 1/2 in. and (2) 3/4 in.	20
82181-1234-RD*	67	—	Yes	4 sides: (1) 1/2 in. and (2) 1/2 in. / 3/4 in.; back: (3) 1/2 in. and (2) 1/2 in. / 3/4 in.	20
82181-12-1-CV	67	CV	—	3 sides: (1) 1/2 in. and (2) 1 in.; back: (3) 1/2 in. and (2) 3/4 in.	20
82181-1234-CV	67	CV	—	3 sides: (1) 1/2 in. and (2) 1/2 in. / 3/4 in.; back: (3) 1/2 in. and (2) 1/2 in. / 3/4 in.	20
82181-1234-1-CV	67	CV	—	3 sides: (1) 1/2 in., (1) 1/2 in. / 3/4 in. and (1) 1 in.; back: (3) 1/2 in. and (2) 3/4 in.	20
82181-1234-CVRD*	67	CV	Yes	3 sides: (1) 1/2 in., (1) 1/2 in. / 3/4 in. and (1) 1 in.; back: (3) 1/2 in. and (2) 3/4 in.	20

Note: Use on Class 2 and Class 3 remote control, signaling and power-limited circuits only.



82-52E-0



82-52E-1/4



82-52E-1/2



82-52E-3/4



82-52E-1



82-52E-5/8



82-52E-1-1/4



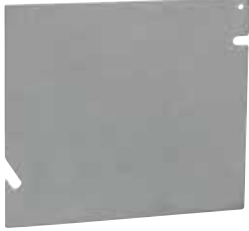
82-52E-1-1/2



Cat. No.	Raised (in.)	Volume (Cu. in.)	Std. Ctn.
5 Square to 4 in. square box adapters			
82-52E-0	Flat	—	20
82-52E-1/4	1/4	3.5	20
82-52E-1/2	1/2	7.2	20
82-52E-5/8	5/8	9.1	20
82-52E-3/4	3/4	10.8	20
82-52E-1	1	14.7	20
82-52E-1-1/4	1 1/4	18.0	20
82-52E-1-1/2	1 1/2	21.0	20

Steel City 5 Square boxes

Blank covers and box accessories



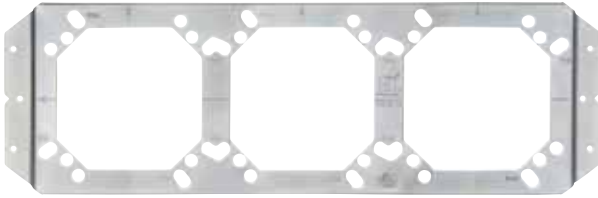
82C-1



82C-1-RD



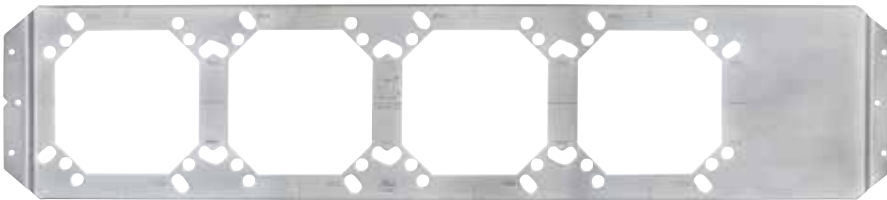
Cat. No.	Red	Std. Ctn.
5 Square Blank covers		
82C-1	-	20
82C-1-RD	Yes	20



H16S-82-3



FSS-82



H24S-82-4



Cat. No.	Description	Std. Ctn.
5 Square Box accessories		
H16S-82-3	Support bracket for 5 Square 4 in. and 4 ^{11/16} in. boxes; 16 in. stud centers	20
H24S-82-4	Support bracket for 5 Square 4 in. and 4 ^{11/16} in. boxes; 24 in. stud centers	20
FSS-82	Far-side support	20

NuTek Nonmetallic boxes



Cat. No.	Volume (Cu. in.)	Width (in.)	Edge Height (in.)	Edge Width (in.)	Cable Entries	Use with
2³/₄ in. deep - 3-³/₄ in. high – device boxes						
WSW	18.0	2 ¹ / ₄	–	–	4	Nonmetallic sheathed cable
WSW-BX	18.0	2 ¹ / ₄	5	4 ¹ / ₄	4	AC90-Armoured cable
WSW-N	18.0	2 ¹ / ₄	–	–	4	Nonmetallic sheathed cable
2-WSW	33.0	4	5	5 ¹ / ₂	8	Nonmetallic sheathed cable
3-WSW	48.0	5 ³ / ₄	5	7 ¹ / ₂	12	Nonmetallic sheathed cable
4-WSW	67.0	7 ⁵ / ₈	5	8 ³ / ₄	16	Nonmetallic sheathed cable
WSW-FC	18.0	2 ¹ / ₄	–	–	4	Nonmetallic sheathed cable
2³/₄ in. deep - 3-³/₄ in. high – 4 in. wide – ceiling boxes						
WOCT	26.0	–	–	–	4	Nonmetallic sheathed cable
WOCT-FC	26.0	–	5 ¹ / ₄	–	4	Nonmetallic sheathed cable
3 in. deep - 4-⁷/₈ in. high – 4-⁷/₈ in. wide – oven and dryer						
WRD	61.0	–	6 ⁷ / ₈	6 ⁷ / ₈	4	Nonmetallic sheathed cable

NuTek Nonmetallic boxes

Airtight model



F-WSW



FSWBX



2-FSW



3-FSW



4-FSW



FWOCT



FWRD



WSW-P



Cat. No.	Volume (Cu. in.)	Width (in.)	Edge Height (in.)	Edge Width (in.)	Cable Entries	Use with
2 3/4 in. deep - non-gangable - 3 3/4 in. high – device boxes						
F-WSW	18.0	2 1/4	–	–	4	Nonmetallic sheathed cable
FSWBX	18.0	2 1/4	5	4 1/4	4	AC90-Armoured cable
2-FSW	33.0	4	5	5 1/2	8	Nonmetallic sheathed cable
3-FSW	48.0	5 3/4	5	7 1/2	12	Nonmetallic sheathed cable
4-FSW	67.0	7 5/8	5	8 3/4	16	Nonmetallic sheathed cable
2 3/4 in. deep - 3 3/4 in. high – 4 in. wide – ceiling box						
FWOCT	26.0	–	5 1/4	–	4	Nonmetallic sheathed cable
3 in. deep - 4 7/8 in. high – 4-7/8 in. wide – oven and dryer						
FWRD	61.0	–	6 7/8	6 7/8	4	Nonmetallic sheathed cable

Cat. No.	Description
Partition	
WSW-P	Voltage partition – for 2-WSW,2-FSW,4-WSW and 4-FSW only

Note: CEC 2012 rule 30-302: 4) Where the weight of a luminaire does not exceed 23 kg (50 lb), the luminaire shall be permitted to be supported by a ceiling outlet box attached directly to the building structure or by a ceiling outlet box attached to a bar hanger. Requires that a ceiling-mounted luminaire weighing 23 kg or less be supported on a ceiling outlet box attached directly to the building structure.

A bar hanger may also be used to attach a ceiling box to the building structure when the luminaire weighs 23 kg or less.

NuTek Nonmetallic boxes

Fire resistance rating: 2 hours



WSW-US



F-WSW-US



2WSW-US



2-FWSW-US



WOCT-US



F-WOCT-US



Cat. No.	Volume (Cu. in.)	Width (in.)	Edge Height (in.)	Edge Width (in.)	Cable Entries	Use with
2 3/4 in. deep - non-gangable - 3 3/4 in. high – device boxes						
WSW-US	18.0	2 1/4	–	–	4	Nonmetallic sheathed cable
F-WSW-US	18.0	2 1/4	–	–	4	Nonmetallic sheathed cable
2WSW-US	33.0	4	5	5 1/2	8	Nonmetallic sheathed cable
2-FWSW-US	33.0	4	5	5 1/2	8	Nonmetallic sheathed cable
2 3/4 in. deep - 3 3/4 in. high – 4 in. wide – ceiling boxes						
WOCT-US	26.0	–	–	–	4	Nonmetallic sheathed cable
F-WOCT-US	26.0	–	–	–	4	Nonmetallic sheathed cable

NuTek Extension rings / vapour barriers

Nonmetallic



WXT12



WXT18



WXT58



WSW-VB



WOCT-VB

Cat. No.	Description
Extension rings	
WXT-12	Raised 1/2 in.
WXT-18	Raised 1/8 in.
WXT-58	Raised 5/8 in.
Vapour barriers – soft shell	
WOCT-VB	For use with WOCT ceiling boxes or 2WSW 2 gang switch boxes
WSW-VB	For use with WSW 1 gang switch boxes

Carlton Curved lid

J-Box

Anyone who's worked with parking lot light poles knows the problem. Those tiny integral hand holes for electrical wiring can really slow a project down. But now there's a better answer for shopping centers, car dealerships, sport arenas, office complexes or anywhere you need pole lighting for large parking lot areas – the Carlton nonmetallic curved lid J-Boxes.

Carlton curved lid J-Boxes meet NEMA 1, 2, 3, 3R, 3S, 4, 4X, 12, 13 ratings. They are available in sizes 8 in. x 8 in. or 12 in. x 12 in. Both the base and lid are made from PVC to eliminate rust and corrosion and are supplied with tamper-resistant screws.

Designed specifically for use with 24 in. diameter concrete piers, J-Boxes are installed, along with all necessary conduit and fittings, when piers are poured. This gives installers a giant junction box at the base of every pole to ease wiring, facilitate circuit management, and provide easy post-installation maintenance. Just take a closer look and you'll see why our nonmetallic J-Boxes are a better choice for you.

Features and benefits:

- NEMA 1, 2, 3, 3R, 3S, 4, 4X, 12, 13
- CSA Certified
- Printable lid
- Dividers available to separate high and low voltage and can be retrofitted into existing applications
- Lids provide locations to mount weatherproof covers:
 - 8" x 8" – one location
 - 12" x 12" – three locations
- Nonconductive and noncorrosive
- Designed for a 24" diameter concrete pier



Carlton Curved lid

J-Box

Faster, easier wiring for greater productivity

Once your J-Boxes are installed, you can speed projects along by pre-wiring before poles arrive. Or, you can install poles first and use them to mount cable-pulling equipment – a particular advantage for long, difficult wire pulls. Of course, all the extra hand room our J-Boxes offer makes splicing much easier and faster than working through cramped pole-access holes.



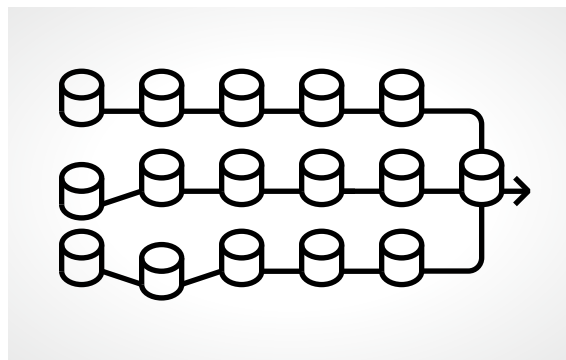
More flexibility, fewer home runs and easier maintenance

Extra room also gives you splicing space for options like zone lighting or to reduce the number of home runs, which can lower trenching and associated materials costs by up to 30%.

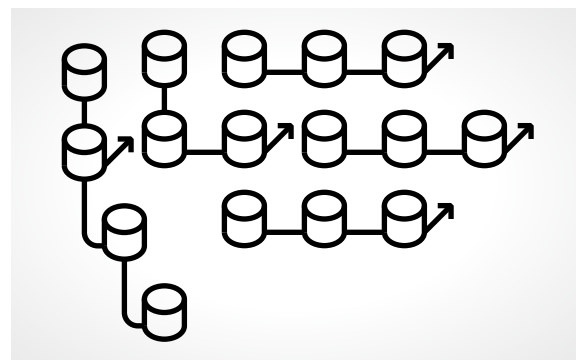
In addition, the box lids provide locations to mount receptacles and weatherproof covers for even more flexibility. For easy maintenance, fixture protection can be placed at the base, and if need be, poles can even be removed and replaced in the middle of the circuit without affecting overall lighting.

— 01 Site lighting plan with J-box

— 02 Site lighting plan without J-box



— 01



— 02

— 03 J-box, with all conduit and fittings placed as desired, is temporarily attached to the concrete form – base and lid inside.

— 04 Remove form after concrete has been poured and allowed to cure.

— 05 Pop off the J-box lid, leaving an 8" x 8" x 4" or 12" x 12" x 4" access area, depending on the J-box selected.

— 06 After wiring is completed, the lid is replaced to complete the installation.

Easy to install



— 03



— 04



— 05



— 06

Carlton Curved lid

J-Box



J-Box assemblies



Cat. No.	Size (in.)	Std. Ctn.	Std. Wt. (lb)
E88C24	8 x 8 x 4	6	28.3
E1212C24	12 x 12 x 4	2	9.7

Accessories



Replacement lids

Cat. No.	Size (in.)	Std. Ctn.	Std. Wt. (lb)
E88L24	8 x 8	1	2.1
E1212L24	12 x 12	1	2.3



J-Box dividers are used to separate high- and low-voltage devices and solvent cement into place.

Dividers

The Canadian Electrical Code (CEC) allows electrical conductors to share an outlet box when the conductors and communication cables are separated by a barrier within the box.

Cat. No.	Std. Ctn.	Std. Wt. (lb)
E88DIV (For use with Cat. No. E88C24)	6	2.1
E1212DIV (For use with Cat. No. E1212C24)	2	2.3